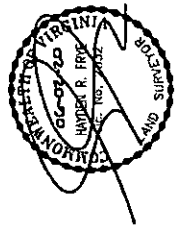


I HEREBY CERTIFY THAT THIS PLAN IS ACCURATE AND THAT IT COMPLIES WITH THE PROVISIONS OF THE CODE OF VIRGINIA OF 1950 AS AMENDED, §§ 55.1-1920A & B AND I FURTHER CERTIFY THAT ALL IMPROVEMENTS ARE TO BE CONSTRUCTED IN ACCORDANCE WITH THE CODE OF VIRGINIA § 55.1-1920A, ARE SUBSTANTIALLY COMPLETE.



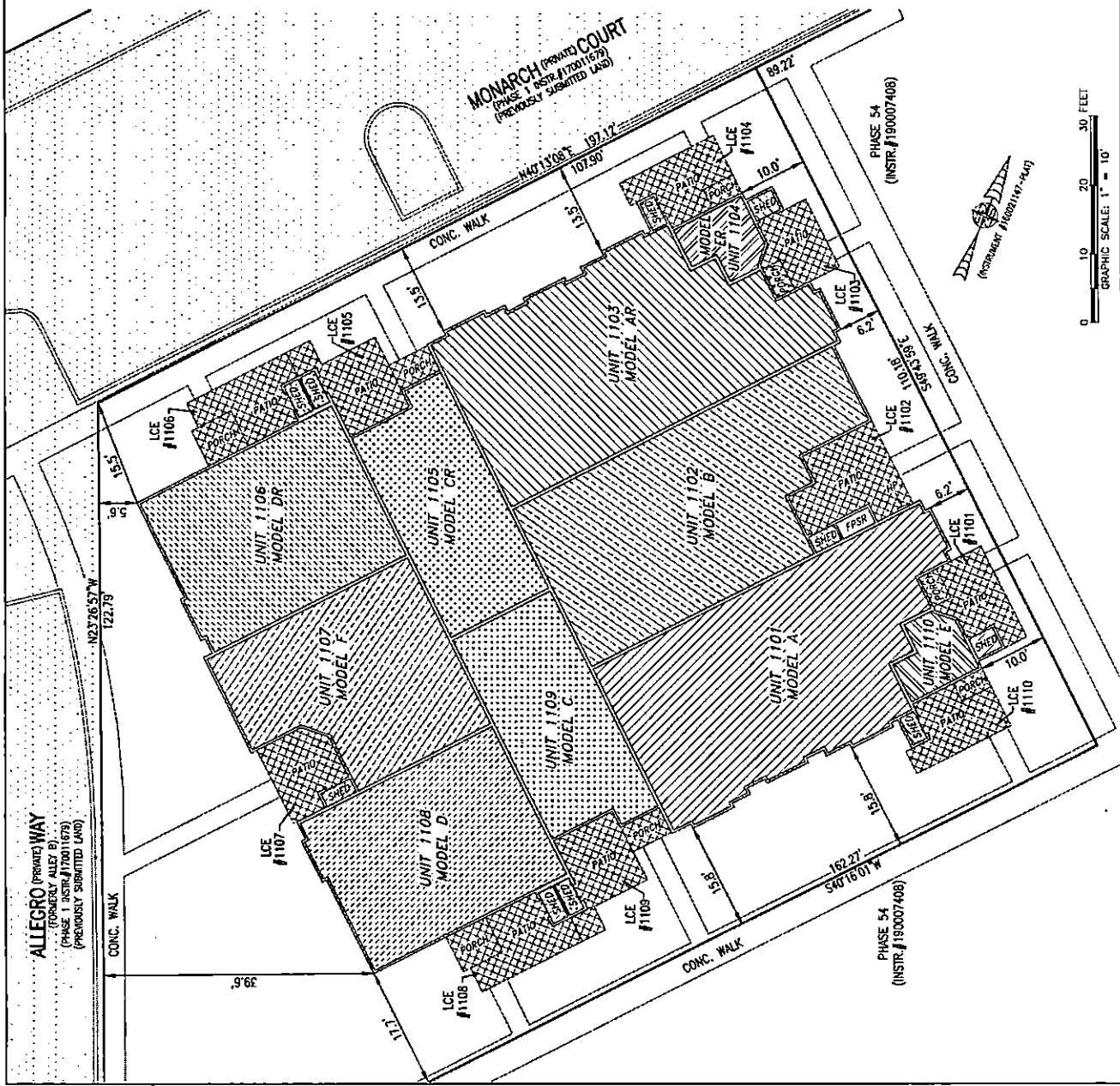
UNIT ID	UNIT DESCRIPTION	UNIT ADDRESS	PARKING SPACE
A	INDICATES AREA OF UNIT 1101	#1101 MONARCH COURT	209
B	INDICATES AREA OF UNIT 1102	#1102 MONARCH COURT	208
AR	INDICATES AREA OF UNIT 1103	#1103 MONARCH COURT	207
ER	INDICATES AREA OF UNIT 1104	#1104 MONARCH COURT	206
CR	INDICATES AREA OF UNIT 1105	#1105 MONARCH COURT	204
DR	INDICATES AREA OF UNIT 1106	#1106 MONARCH COURT	201
F	INDICATES AREA OF UNIT 1107	#1107 MONARCH COURT	194
D	INDICATES AREA OF UNIT 1108	#1108 MONARCH COURT	191
C	INDICATES AREA OF UNIT 1109	#1109 MONARCH COURT	190
E	INDICATES AREA OF UNIT 1110	#1110 MONARCH COURT	189
HP	HOUSE PANEL (ELECTRIC)	#1111 MONARCH COURT	N/A
FPSP	FIRE PROTECTION SPRINKLER ROOM	#1112 MONARCH COURT	N/A
	INDICATES COMMON ELEMENT (EXCLUDING AREAS OUTSIDE OF SUBMITTED LAND)		
	INDICATES LIMITED COMMON ELEMENT (LCE) ASSIGNED TO A UNIT. # UNIT ASSIGNED		

THIS SHEET: BUILDING DETAIL

**PHASE 11**  
**CONDOMINIUM PLAT AND PLAN**  
 OF  
**THE PROMENADE**  
 AT  
**JOHN TYLER**  
 A CONDOMINIUM  
 JAMES CITY COUNTY, VIRGINIA

John Tyler and Associates, Inc.  
 Land Surveyors  
 303 MILLAN ROAD, SUITE 200  
 VIRGINIA BEACH, VA, 23462  
 PHONE: 757/485-7700 FAX: 757/485-7709

DATE: MAY 26, 2020  
 SCALE: 1" = 10'  
 SHEET 3 OF 5 THIS PHASE



01802