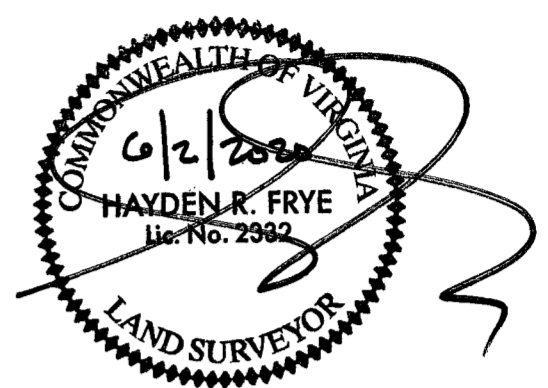


200008161

I HEREBY CERTIFY THAT THIS PLAT IS ACCURATE AND THAT IT COMPLIES WITH THE PROVISIONS OF THE CODE OF VIRGINIA OF 1950 AS AMENDED, § 55.1-1920A & B AND I FURTHER CERTIFY THAT ALL IMPROVEMENTS THEREOF DEPICTED HEREON, PURSUANT TO THE CODE OF VIRGINIA § 55.1-1920A, ARE SUBSTANTIALLY COMPLETE.



| UNIT ID | UNIT DESCRIPTION | UNIT ADDRESS | PARKING SPACE |
|---------|---|---------------------|---------------|
| A | -INDICATES AREA OF UNIT 1101 | #1101 MONARCH COURT | 209 |
| B | -INDICATES AREA OF UNIT 1102 | #1102 MONARCH COURT | 208 |
| AR | -INDICATES AREA OF UNIT 1103 | #1103 MONARCH COURT | 207 |
| ER | -INDICATES AREA OF UNIT 1104 | #1104 MONARCH COURT | 206 |
| CR | -INDICATES AREA OF UNIT 1105 | #1105 MONARCH COURT | 204 |
| DR | -INDICATES AREA OF UNIT 1106 | #1106 MONARCH COURT | 201 |
| F | -INDICATES AREA OF UNIT 1107 | #1107 MONARCH COURT | 194 |
| D | -INDICATES AREA OF UNIT 1108 | #1108 MONARCH COURT | 191 |
| C | -INDICATES AREA OF UNIT 1109 | #1109 MONARCH COURT | 190 |
| E | -INDICATES AREA OF UNIT 1110 | #1110 MONARCH COURT | 189 |
| HP | HOUSE PANEL (ELECTRIC) | #1111 MONARCH COURT | N/A |
| FPSR | FIRE PROTECTION SPRINKLER ROOM | #1112 MONARCH COURT | N/A |
| | -INDICATES COMMON ELEMENT (EXCLUDING AREAS OUTSIDE OF SUBMITTED LAND) | | |
| | -INDICATES LIMITED COMMON ELEMENT (LCE) ASSIGNED TO A UNIT. # UNIT ASSIGNED | | |

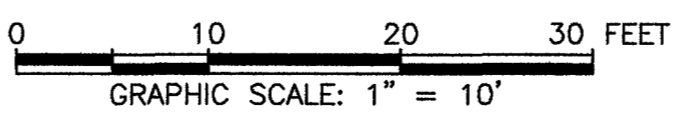
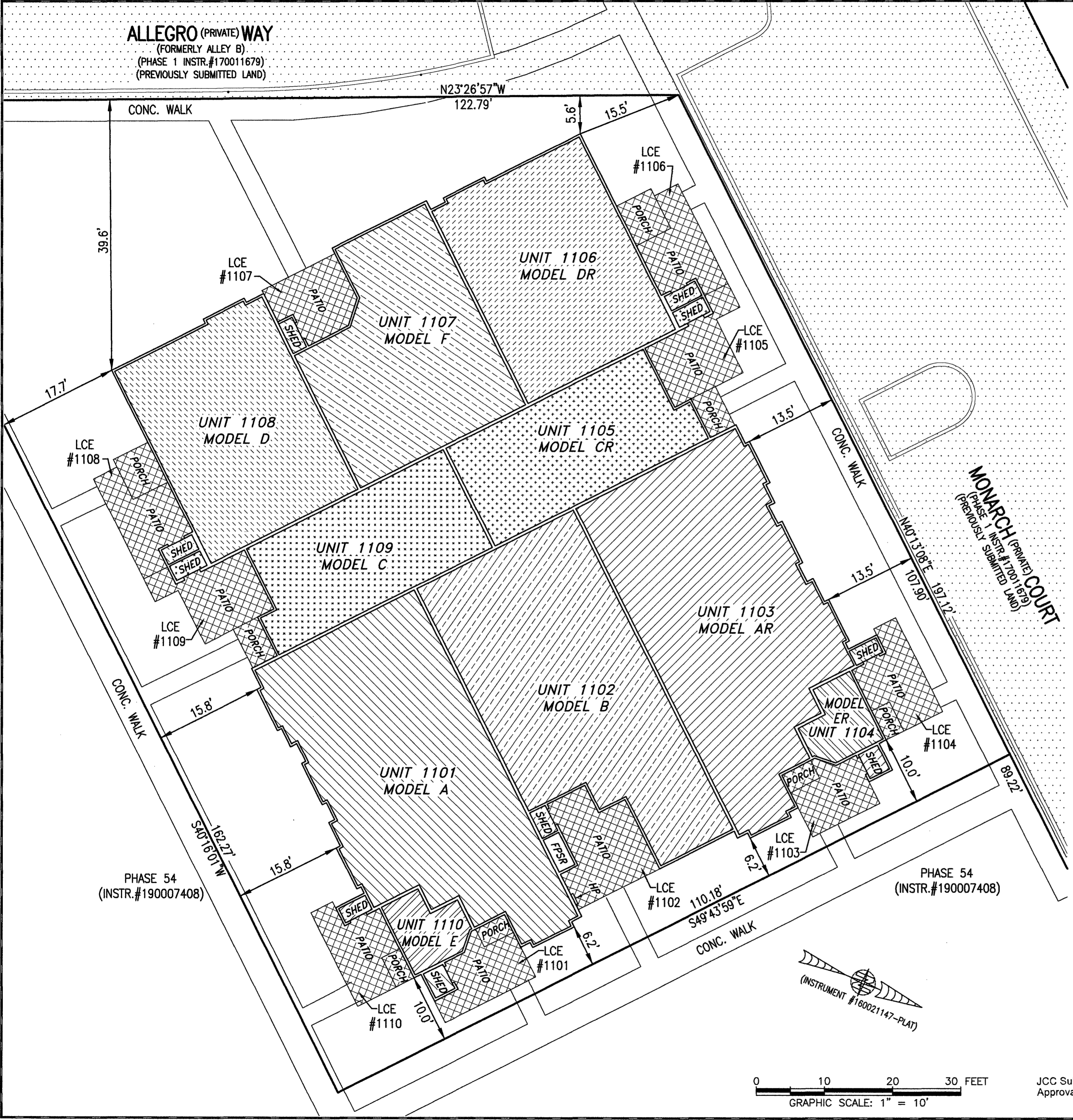
City of Williamsburg & County of James City
 Circuit Court: This PLAT was recorded on
June 9, 2020
 at 10:04 AM, PB _____ PG _____
 Document # 200008161
 MONA A. FOLEY, CLERK
Mona A. Foley, Clerk

THIS SHEET: BUILDING DETAIL

PHASE 11
CONDOMINIUM PLAT AND PLAN
 OF
THE PROMENADE
 AT
JOHN TYLER
 A CONDOMINIUM
 JAMES CITY COUNTY, VIRGINIA

Jo# 160921
 Hayden Frye and Associates, Inc.
Land Surveyors
 333 KELLAM ROAD, SUITE 200
 VIRGINIA BEACH, VA., 23462
 PH: (757) 491-7228 FX: (757) 491-7229

DATE: MAY 26, 2020
 SCALE: 1"=10'
 SHEET 3 OF 5 THIS PHASE



JCC Subdivision Agent
 Approval Not Required

