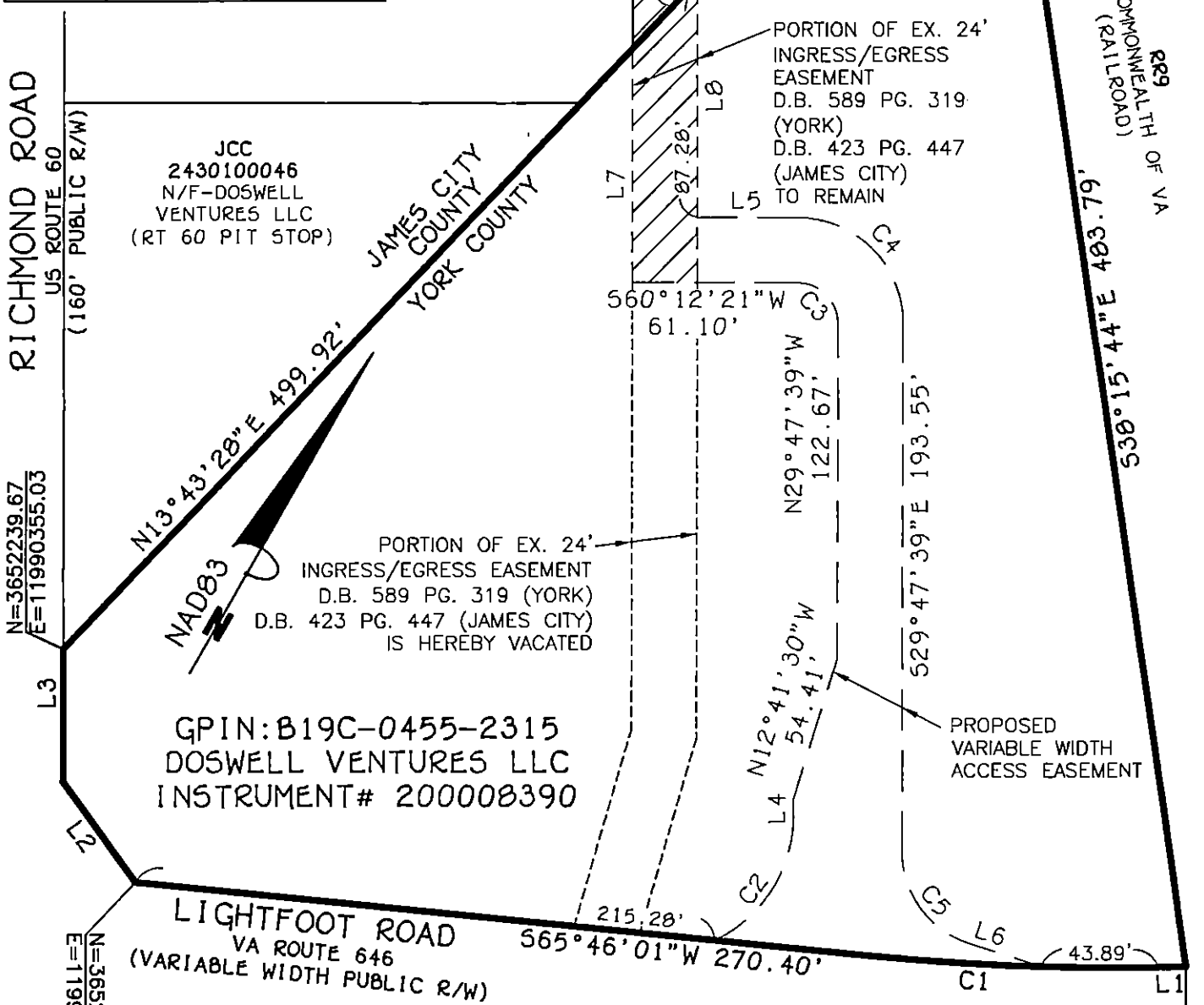
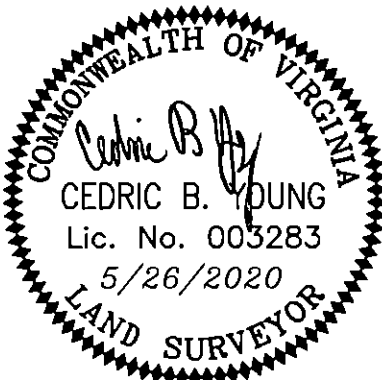


| Line Table | | |
|------------|---------|-------------|
| Line # | Length | Direction |
| L1 | 10.15' | S58°58'55"W |
| L2 | 45.67' | N65°45'04"W |
| L3 | 48.89' | N29°47'39"W |
| L4 | 6.19' | N29°47'39"W |
| L5 | 37.10' | N60°12'21"E |
| L6 | 27.63' | N77°56'31"E |
| L7 | 86.00' | N29°47'39"W |
| L8 | 111.28' | S29°47'39"E |



| Curve Table | | | | | | |
|-------------|---------|---------|------------|---------|---------|---------------|
| Curve # | Length | Radius | Delta | Tangent | Chord | Chord Bearing |
| C1 | 109.53' | 924.93' | 006°47'06" | 54.83' | 109.47' | N62°22'28"E |
| C2 | 57.38' | 51.00' | 064°27'58" | 32.16' | 54.40' | N02°26'20"E |
| C3 | 23.56' | 15.00' | 090°00'00" | 15.00' | 21.21' | N74°47'39"W |
| C4 | 61.26' | 39.00' | 090°00'00" | 39.00' | 55.15' | S74°47'39"E |
| C5 | 45.40' | 36.00' | 072°15'50" | 26.28' | 42.45' | S65°55'34"E |

PLAT SHOWING
 PROPOSED VARIABLE WIDTH
 ACCESS EASEMENT
 ACROSS GPIN:
 B19C-0455-2315
 LOCATED IN THE
 BRUTON DISTRICT OF
 YORK COUNTY, VIRGINIA
 SCALE: 1"=60'
 DATE: MAY 26, 2020



THE BAY COMPANIES

CIVIL ENGINEERS

8500 BELL CREEK ROAD MECHANICSVILLE, VA 23116
 PH:(804)569-7060 FILED:16015_access easement.dwg