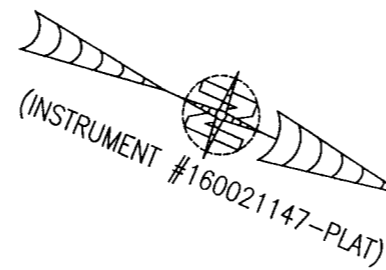


City of Williamsburg & County of James City
Circuit Court: This PLAT was recorded on
3-27-2020

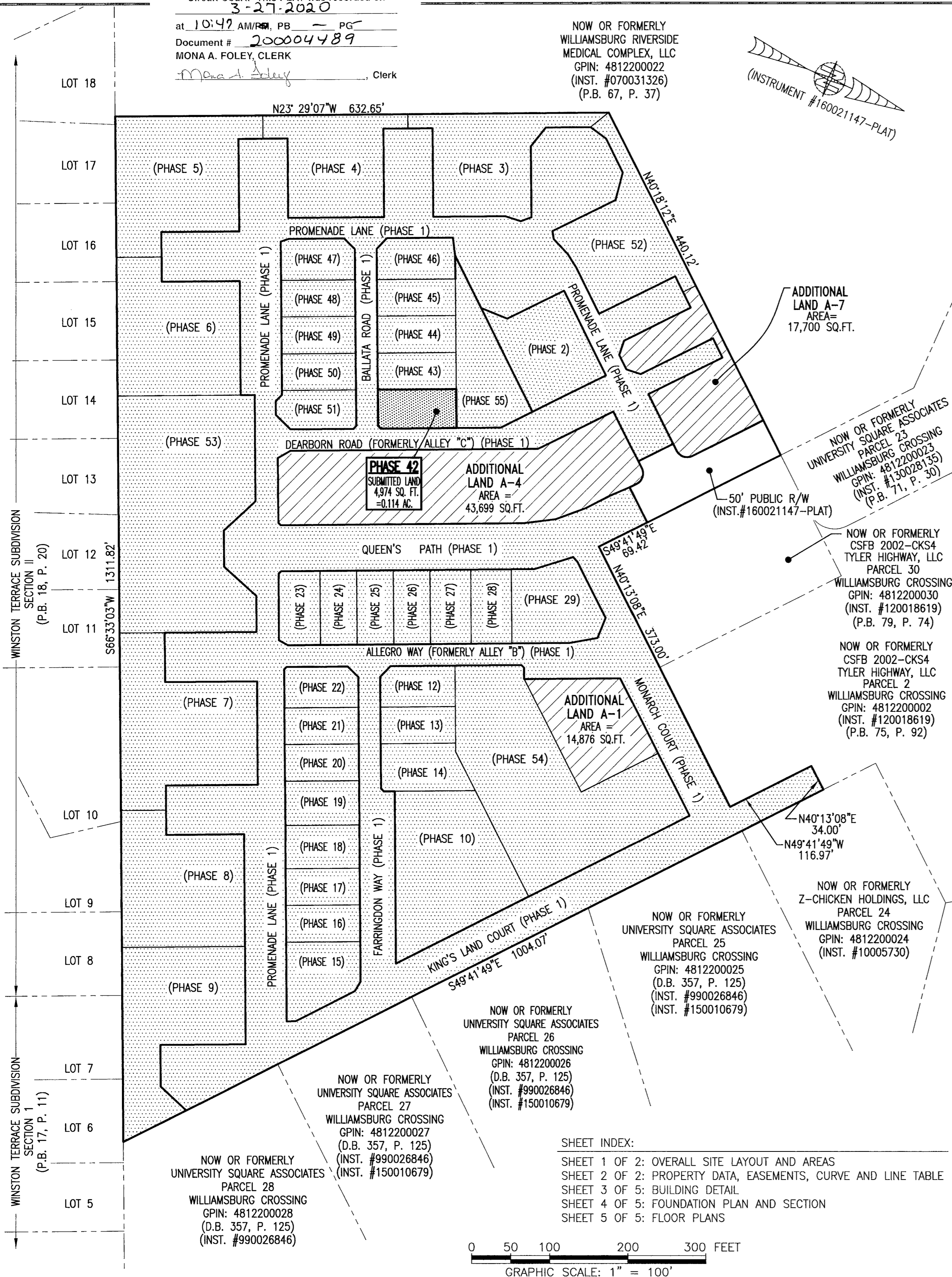
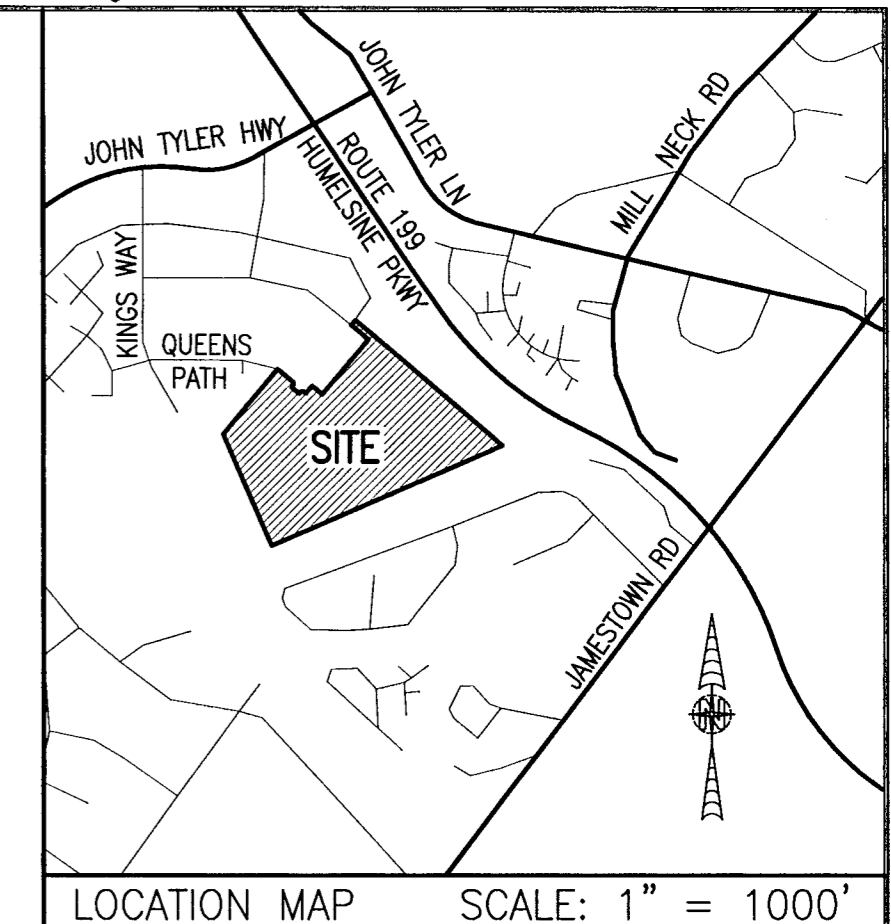
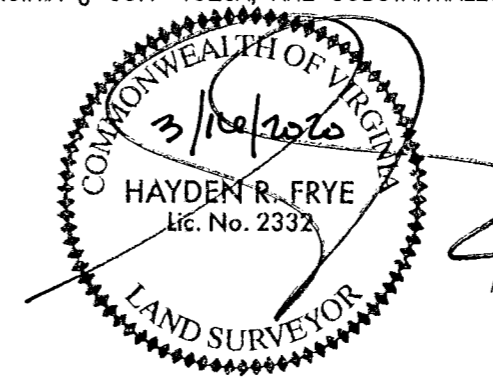
at 10:47 AM/PB, PG
Document # 200004489
MONA A. FOLEY, CLERK

5 Large/Small Plat(s) Recorded
herewith as # 200004489

NOW OR FORMERLY
WILLIAMSBURG RIVERSIDE
MEDICAL COMPLEX, LLC
GPIN: 4812200022
(INST. #070031326)
(P.B. 67, P. 37)



I HEREBY CERTIFY THAT THIS PLAT IS ACCURATE AND THAT IT COMPLIES WITH THE PROVISIONS OF THE CODE OF VIRGINIA OF 1950 AS AMENDED, § 55.1-1920A & B AND I FURTHER CERTIFY THAT ALL IMPROVEMENTS THEREOF DEPICTED HEREON, PURSUANT TO THE CODE OF VIRGINIA § 55.1-1920A, ARE SUBSTANTIALLY COMPLETE.



AREA TABLE				
PHASE	BLDG#	STATUS/RECORDATION	SQUARE FEET	ACRES
1	N/A	INSTR.#170011679	268,468	6.163
2	2	INSTR.#200001502	13,027	0.299
3	3	INSTR.#190014842	19,053	0.437
4	4	INSTR.#190007409	17,652	0.405
5	5	INSTR.#190001499	26,166	0.601
6	6	INSTR.#180018358	24,875	0.571
7	7	INSTR.#180014663	28,822	0.662
8	8	INSTR.#180010369	24,539	0.563
9	9	INSTR.#180003694	25,978	0.596
10	10	INSTR.#170023466	25,806	0.592
12	12	INSTR.#180016847	4,949	0.114
13	13	INSTR.#180010007	4,512	0.104
14	14	INSTR.#180009579	6,462	0.148
15	15	INSTR.#190001143	7,841	0.180
16	16	INSTR.#190001141	4,467	0.103
17	17	INSTR.#190001140	4,467	0.103
18	18	INSTR.#180019704	5,273	0.121
19	19	INSTR.#180019705	5,367	0.123
20	20	INSTR.#180016210	4,465	0.103
21	21	INSTR.#180016209	4,465	0.103
22	22	INSTR.#180016208	4,892	0.112
23	23	INSTR.#180001768	5,014	0.115
24	24	INSTR.#180005480	4,464	0.102
25	25	INSTR.#180001779	4,466	0.103
26	26	INSTR.#170021156	4,465	0.102
27	27	INSTR.#170021157	4,944	0.114
28	28	INSTR.#180001781	4,936	0.113
29	29	NOT YET RECORDED	10,569	0.243
42	42	SUBSTANTIALLY COMPLETE	4,974	0.114
43	43	INSTR.#200003789	4,722	0.108
44	44	INSTR.#200003372	4,722	0.108
45	45	INSTR.#200002243	4,722	0.108
46	46	INSTR.#200000900	5,153	0.118
47	47	INSTR.#190009757	4,879	0.112
48	48	INSTR.#190010971	4,465	0.103
49	49	INSTR.#190011650	4,465	0.102
50	50	INSTR.#190013854	4,465	0.103
51	51	INSTR.#190014841	4,848	0.111
52	1	INSTR.#190017561	18,301	0.420
53	N/A	INSTR.#180014662	49,886	1.145
54	N/A	INSTR.#190007408	43,080	0.989
55	N/A	INSTR.#190011651	11,268	0.259
ADDITIONAL LAND A-1			14,876	0.341
ADDITIONAL LAND A-4			43,699	1.003
ADDITIONAL LAND A-7			17,700	0.406
TOTAL: NEW PARCEL 29			816,629	18.747

LEGAL DESCRIPTION

PROPERTY SHOWN HEREON BEING "NEW PARCEL 29" CONTAINING 18.747 ACRES AS SHOWN ON "PLAT OF LOT LINE EXTINGUISHMENT BEING PARCELS 20 AND 29 OF WILLIAMSBURG CROSSING" PREPARED BY AES CONSULTING ENGINEERS, DATED 10-24-16 AND RECORDED AS INSTRUMENT NO. 160021147.

NOTES:

- PHASE 42 BUILDING 42 IS SUBSTANTIALLY COMPLETE.
- EASEMENTS AND BUILDING LINES SHOWN HEREON PER THE FOLLOWING:
 - ALTA SURVEY BY AES CONSULTING ENGINEERS, DATED 3-23-15
 - PLAT BY AES CONSULTING ENGINEERS, DATED 10-24-16, INST.#160021147
 - PLAN OF DEVELOPMENT BY AES CONSULTING ENGINEERS, DATED 9-8-16

- INDICATES SUBMITTED LAND
- INDICATES PREVIOUSLY SUBMITTED LAND
- INDICATES ADDITIONAL LAND

EJC
JCC Subdivision Agent
Approval Not Required

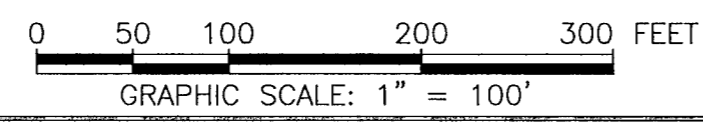
THIS SHEET: OVERALL SITE LAYOUT AND AREAS

PHASE 42
CONDOMINIUM PLAT AND PLAN
OF
THE PROMENADE
AT
JOHN TYLER
A CONDOMINIUM,
JAMES CITY COUNTY, VIRGINIA

Hayden Frye and Associates, Inc.
Land Surveyors
333 KELLAM ROAD, SUITE 200
VIRGINIA BEACH, VA., 23462
PH: (757) 491-7228 FX: (757) 491-7229

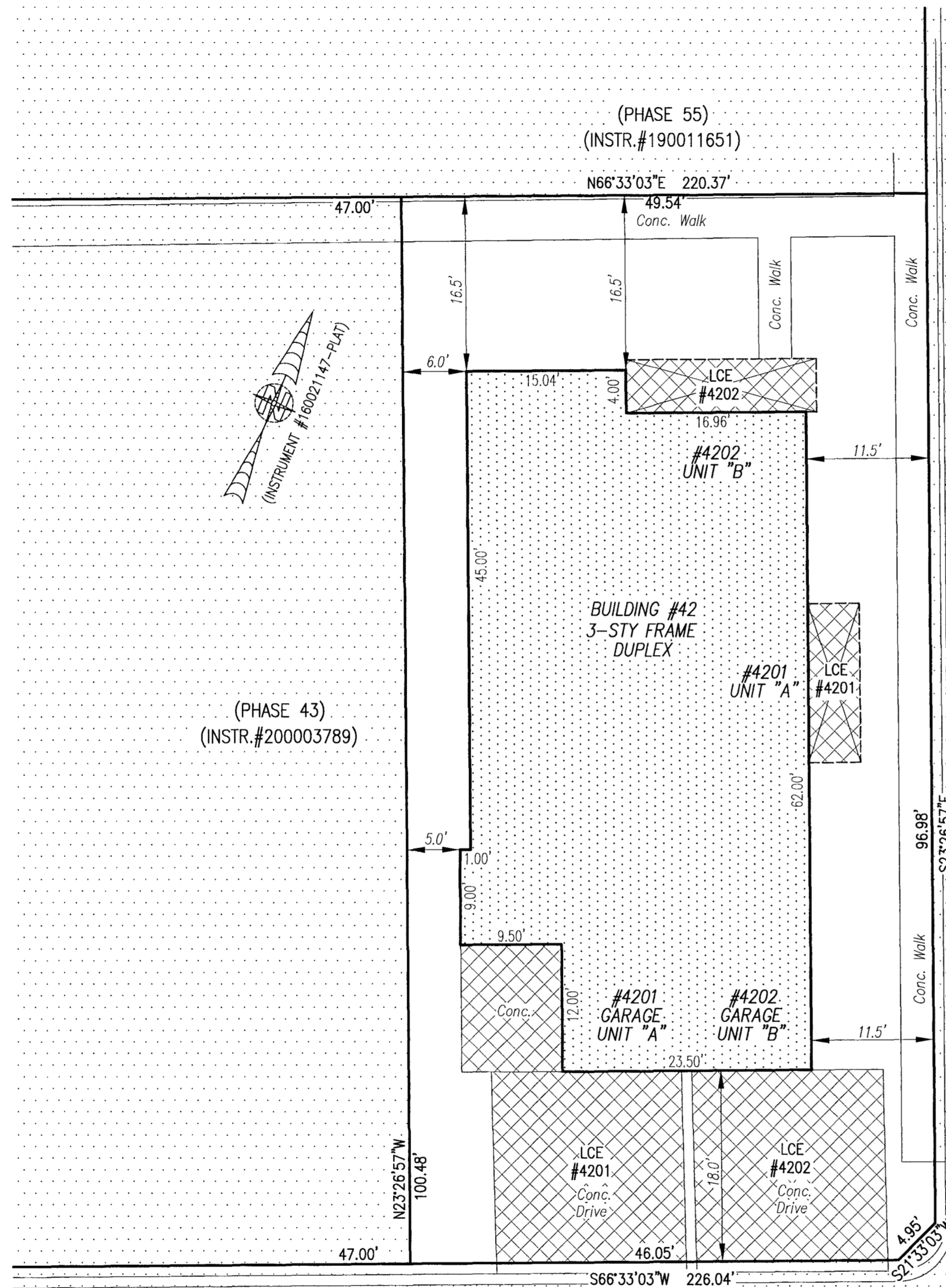
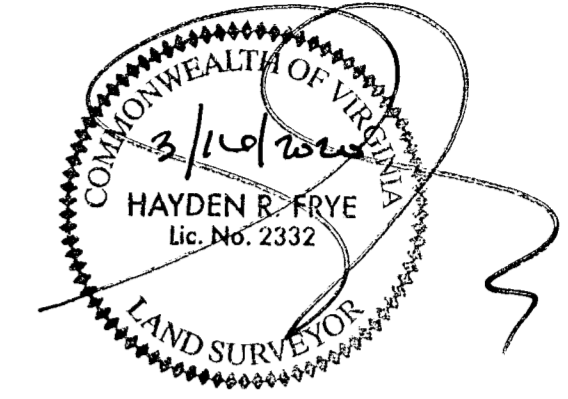
DATE: MARCH 7, 2020
SCALE: 1"=100'
SHEET 1 OF 5 THIS PHASE

SHEET INDEX:
SHEET 1 OF 2: OVERALL SITE LAYOUT AND AREAS
SHEET 2 OF 2: PROPERTY DATA, EASEMENTS, CURVE AND LINE TABLE
SHEET 3 OF 5: BUILDING DETAIL
SHEET 4 OF 5: FOUNDATION PLAN AND SECTION
SHEET 5 OF 5: FLOOR PLANS



20000489

I HEREBY CERTIFY THAT THIS PLAT IS ACCURATE AND THAT IT COMPLIES WITH THE PROVISIONS OF THE CODE OF VIRGINIA OF 1950 AS AMENDED, § 55.1-1920A & B AND I FURTHER CERTIFY THAT ALL IMPROVEMENTS THEREOF DEPICTED HEREON, PURSUANT TO THE CODE OF VIRGINIA § 55.1-1920A, ARE SUBSTANTIALLY COMPLETE.



- INDICATES PREVIOUSLY SUBMITTED LAND
- INDICATES BUILDING AREA (SEE PLANS FOR UNIT DIMENSIONS)
- INDICATES LIMITED COMMON ELEMENT (LCE) ASSIGNED TO A UNIT # UNIT ASSIGNED
- INDICATES COMMON ELEMENT (EXCLUDING AREAS OUTSIDE SUBMITTED LAND)
- INDICATES ADDITIONAL LAND

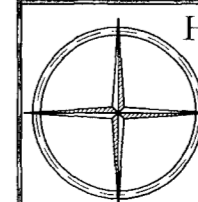
City of Williamsburg & County of James City
 Circuit Court: This PLAT was recorded on
3-27-2020
 at 10:37 AM/PM, PB - PG -
 Document # 20000489
 MONA A. FOLEY, CLERK
Monica A. Foley, Clerk

5 Large/Small Plat(s) Recorded
 herewith as # 20000489

THIS SHEET: BUILDING DETAIL

PHASE 42
CONDOMINIUM PLAT AND PLAN
 OF
THE PROMENADE
 AT
JOHN TYLER
 A CONDOMINIUM
 JAMES CITY COUNTY, VIRGINIA

Jo# 160921



Hayden Frye and Associates, Inc.
Land Surveyors

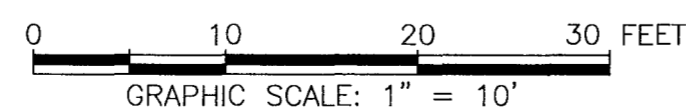
333 KELLAM ROAD, SUITE 200
 VIRGINIA BEACH, VA, 23462
 PH: (757) 491-7228 FX: (757) 491-7229

DATE: MARCH 7, 2020

SCALE: 1"=10'

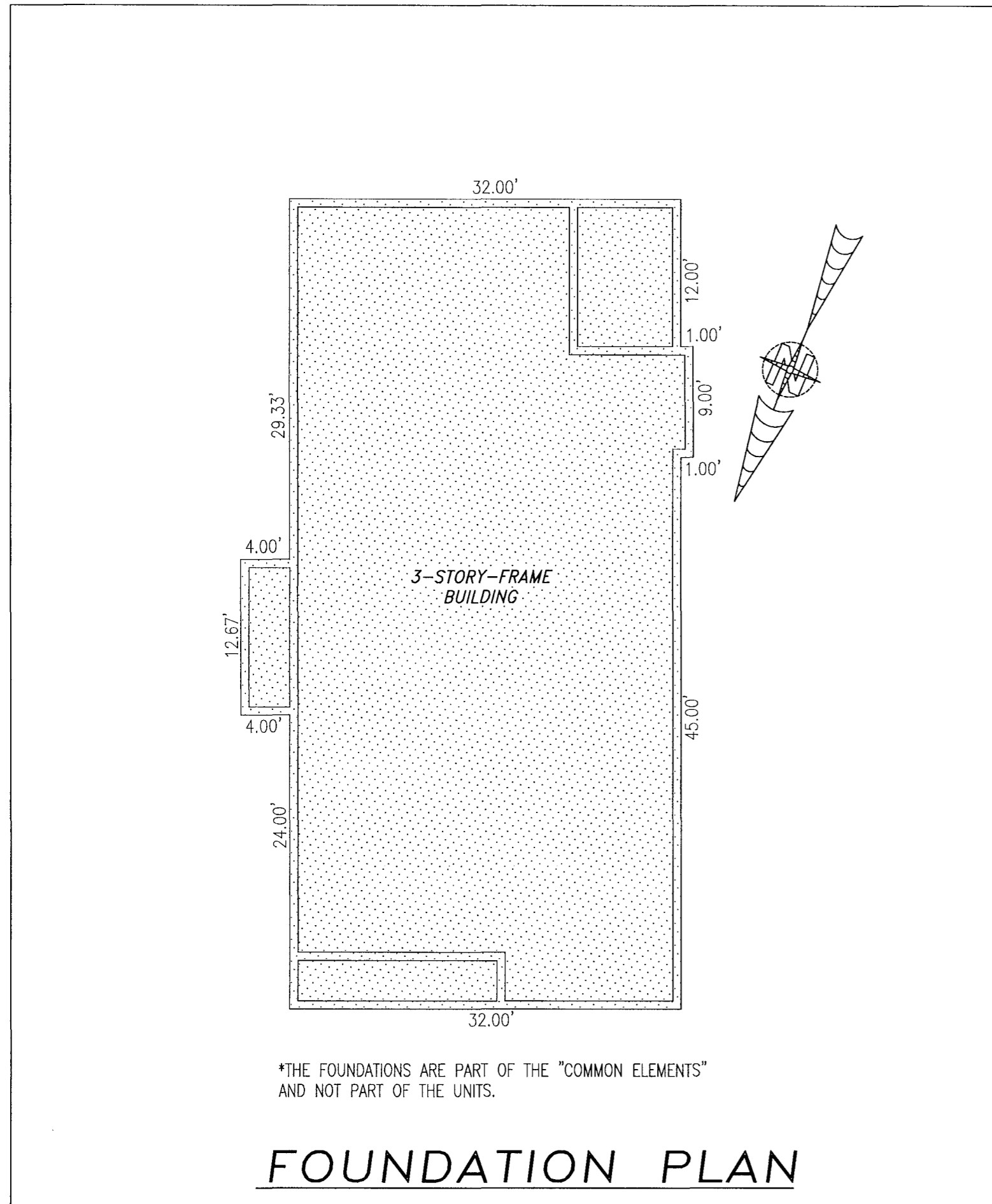
SHEET 3 OF 5 THIS PHASE

JCC Subdivision Agent *EF*
 Approval Not Required

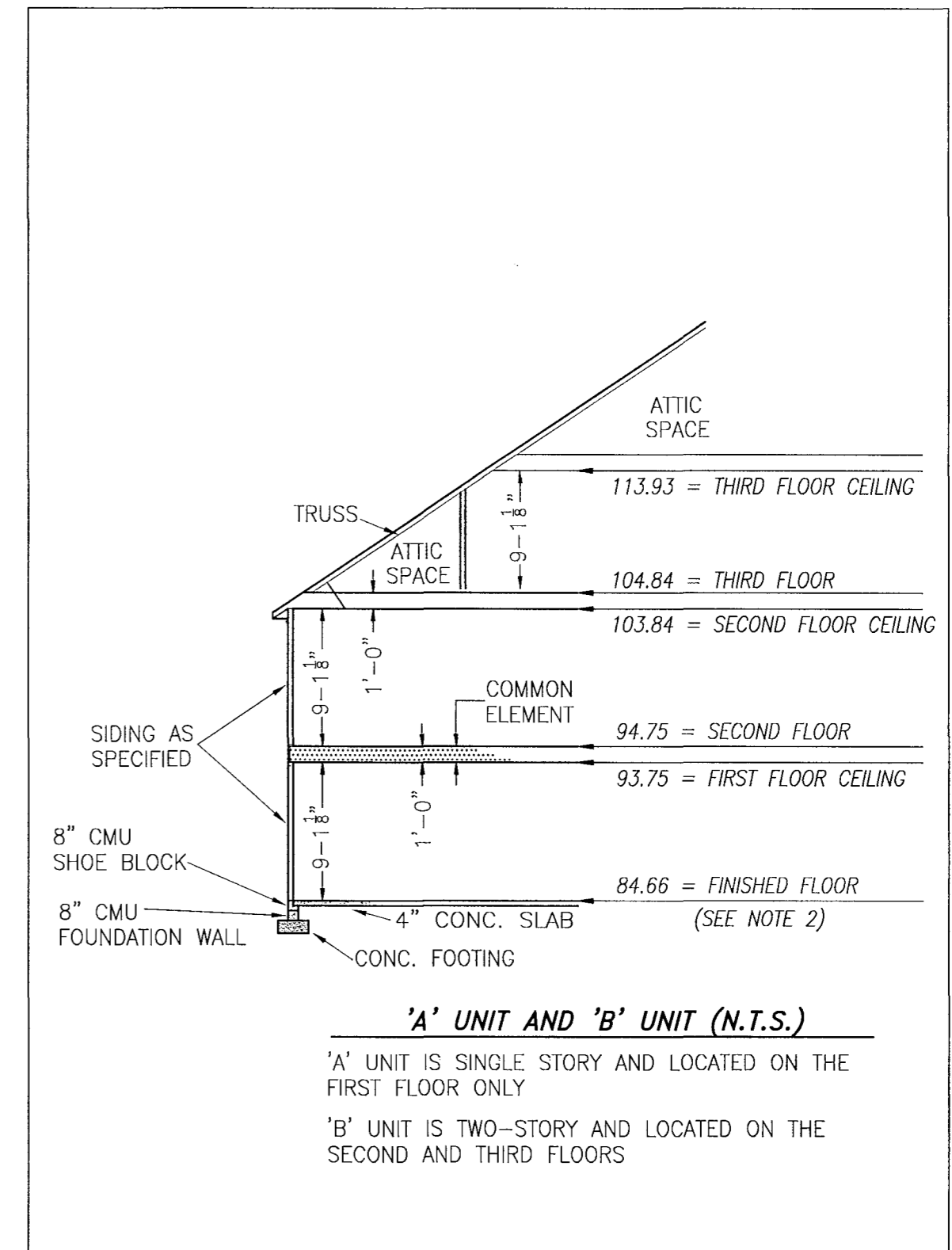


200004489

BUILDING 42 (DUPLEX)



FOUNDATION PLAN

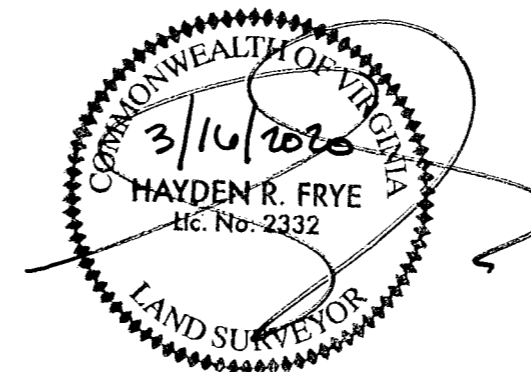


TYPICAL BUILDING SECTION

NOTES:

1. VERTICAL DATUM REFERENCE: NATIONAL GEODETIC VERTICAL DATUM OF 1929 (NGVD29).
2. FINISHED FLOOR ELEVATION SHOWN WAS TAKEN FROM AS-BUILT SURVEY OF BUILDING #42 (DUPLEX) THE PROMENADE AT JOHN TYLER BY HAYDEN FRYE AND ASSOCIATES. FIELD WORK WAS PERFORMED ON 01-26-2020.

I HEREBY CERTIFY THAT THIS PLAT IS ACCURATE AND THAT IT COMPLIES WITH THE PROVISIONS OF THE CODE OF VIRGINIA OF 1950 AS AMENDED, § 55.1-1920A & B AND I FURTHER CERTIFY THAT ALL IMPROVEMENTS THEREOF DEPICTED HEREON, PURSUANT TO THE CODE OF VIRGINIA § 55.1-1920B, ARE SUBSTANTIALLY COMPLETE.



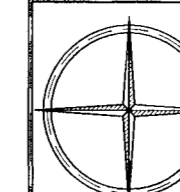
City of Williamsburg & County of James City
 Circuit Court: This PLAT was recorded on
 3-27-2020
 at 10:47 AM/PM, PB PG
 Document # 200004489
 MONA A. FOLEY, CLERK
Monica Foley, Clerk

5 Large/Small Plat(s) Recorded
 herewith as # 200004489

THIS SHEET: FOUNDATION PLAN AND SECTION

PHASE 42
 CONDOMINIUM PLAT AND PLAN
 OF
 THE PROMENADE
 AT
 JOHN TYLER
 A CONDOMINIUM
 JAMES CITY COUNTY, VIRGINIA

Jo# 160921



Hayden Frye and Associates, Inc.
 Land Surveyors

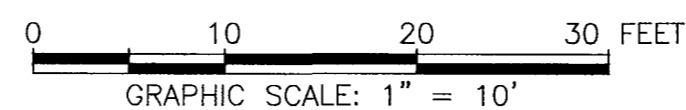
333 KELLAM ROAD, SUITE 200
 VIRGINIA BEACH, VA, 23462
 PH: (757) 491-7228 FX: (757) 491-7229

DATE: MARCH 7, 2020

SCALE: 1"=10'

SHEET 4 OF 5 THIS PHASE

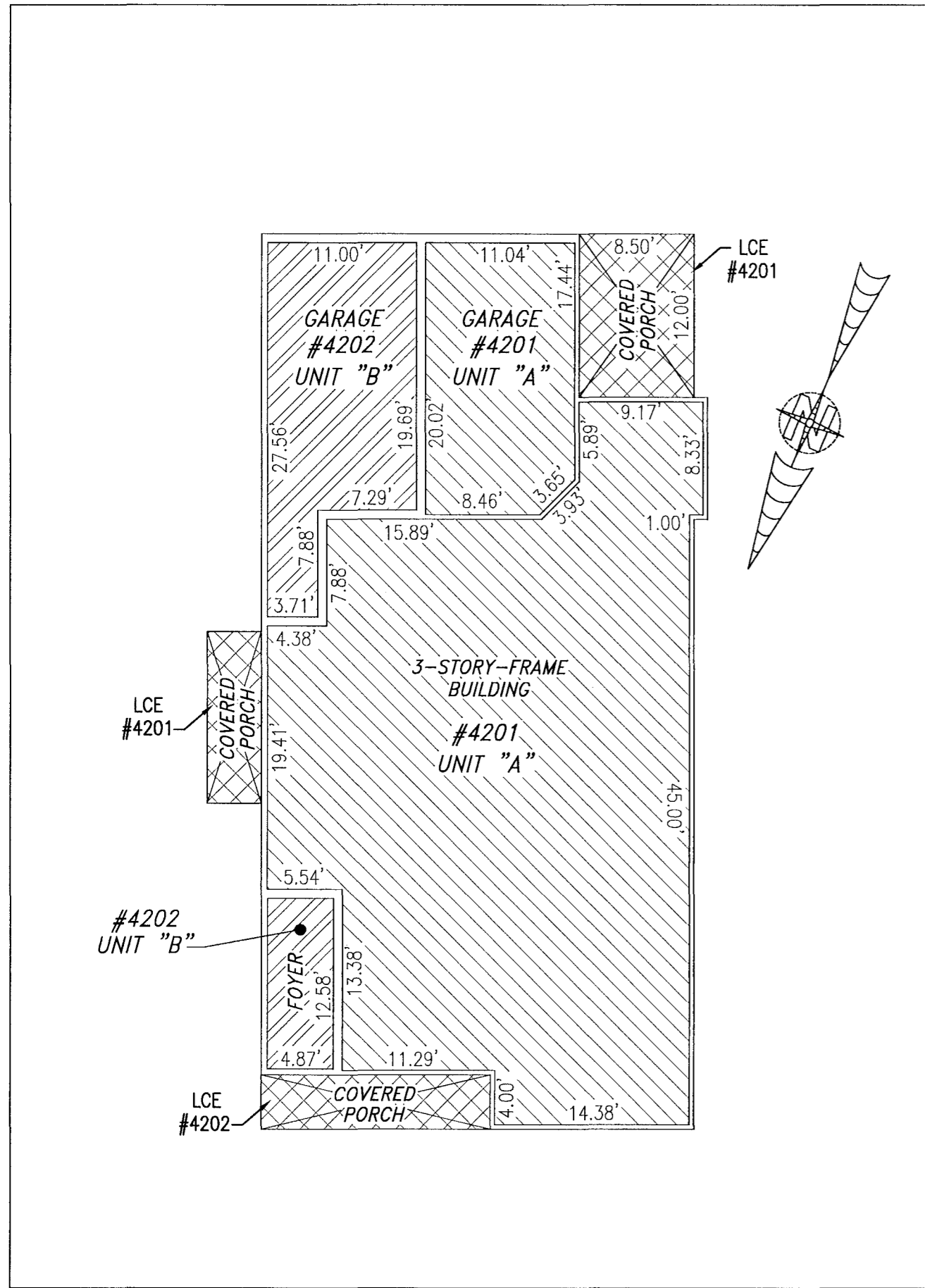
INDICATES COMMON ELEMENT



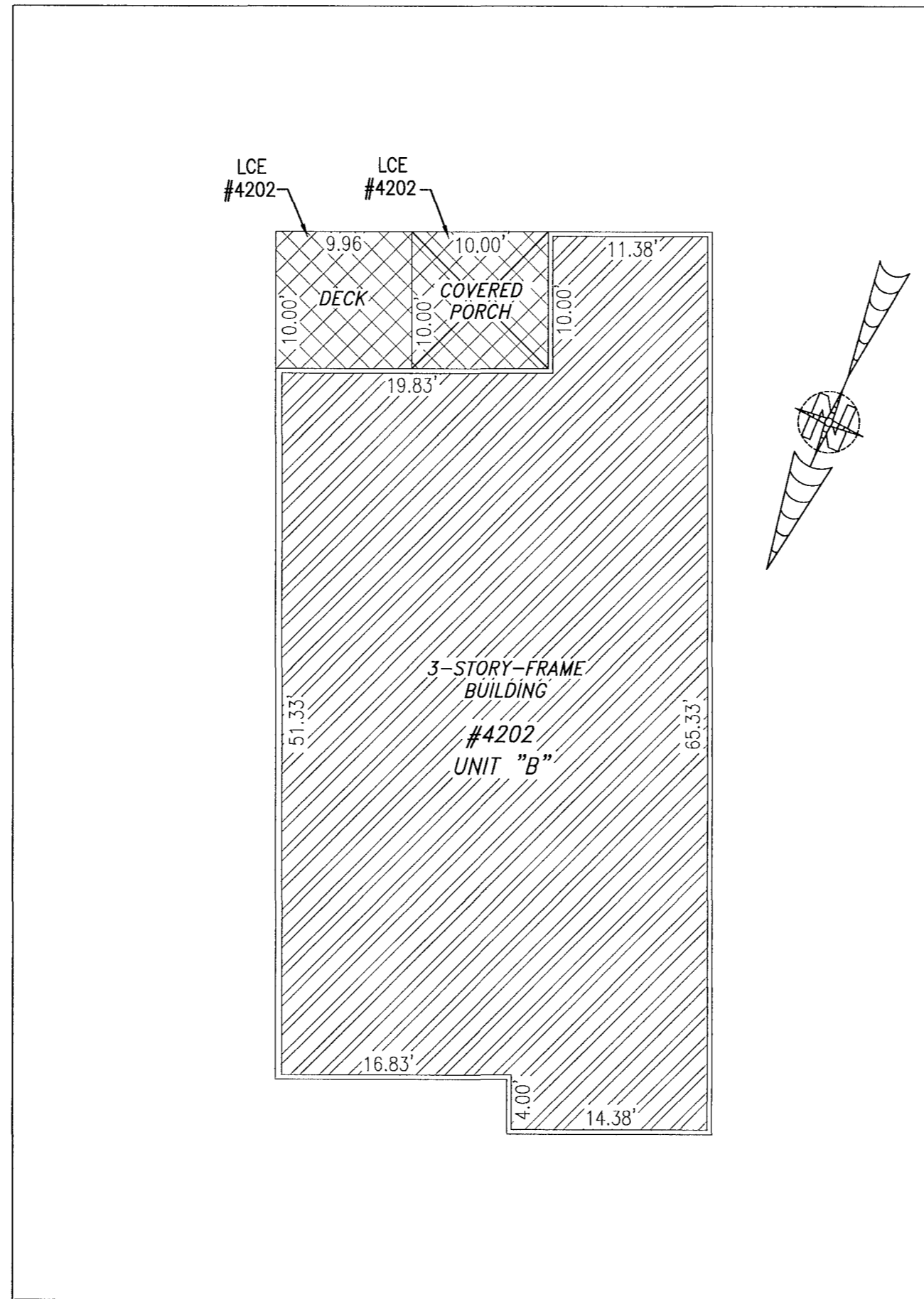
JCC Subdivision Agent Approval Not Required

200004489

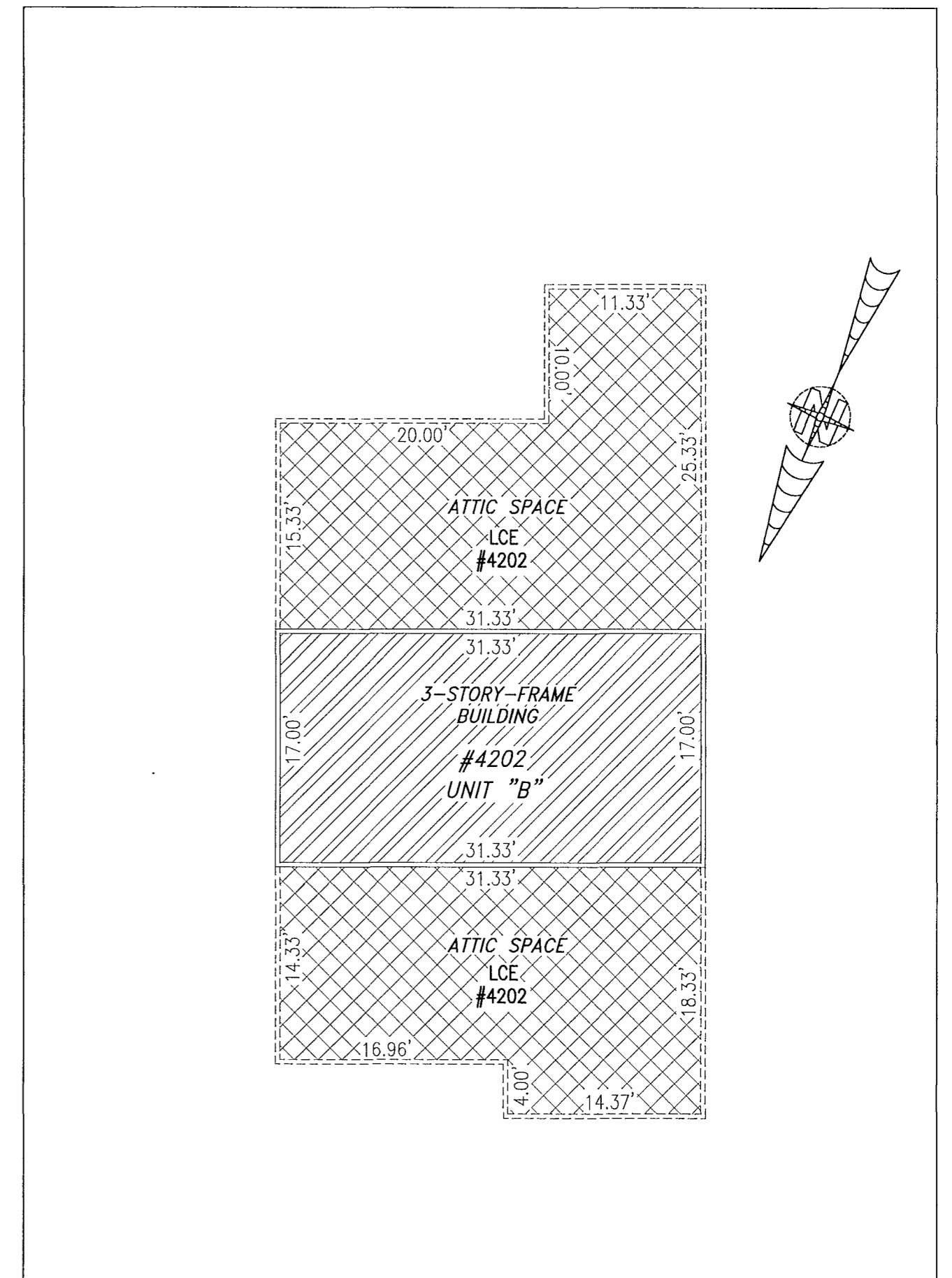
BUILDING 42 (DUPLEX)



FIRST FLOOR



SECOND FLOOR



THIRD FLOOR

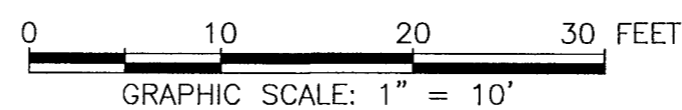
City of Williamsburg & County of James City
 Circuit Court: This PLAT was recorded on
3-27-2020
 at 10:47 AM/PM, PB — PG —
 Document # 200004489
 MONA A. FOLEY, CLERK
Mon A. Foley, Clerk

5 Large/Small Plat(s) Recorded
 herewith as # 200004489

I HEREBY CERTIFY THAT THIS PLAT IS ACCURATE AND THAT IT
 COMPLIES WITH THE PROVISIONS OF THE CODE OF VIRGINIA OF 1950
 AS AMENDED, § 55.1-1920A & B AND I FURTHER CERTIFY THAT ALL
 IMPROVEMENTS THEREOF DEPICTED HEREON, PURSUANT TO THE CODE
 OF VIRGINIA § 55.1-1920B, ARE SUBSTANTIALLY COMPLETE.



UNIT ID	UNIT DESCRIPTION	UNIT ADDRESS
A	-INDICATES AREA OF UNIT 4201	#4201 BALLATA ROAD
B	-INDICATES AREA OF UNIT 4202	#4202 BALLATA ROAD
	-INDICATES COMMON ELEMENT	
	-INDICATES LIMITED COMMON ELEMENT	

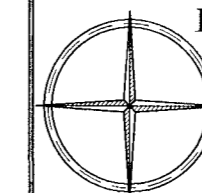


JCC Subdivision Agent *EFV*
 Approval Not Required

THIS SHEET: FLOOR PLANS

PHASE 42
 CONDOMINIUM PLAT AND PLAN
 OF
THE PROMENADE
 AT
JOHN TYLER
 A CONDOMINIUM
 JAMES CITY COUNTY, VIRGINIA

Jo# 160921



Hayden Frye and Associates, Inc.
Land Surveyors

333 KELLAM ROAD, SUITE 200
 VIRGINIA BEACH, VA., 23462
 PH: (757) 491-7228 FX: (757) 491-7229

DATE: MARCH 7, 2020

SCALE: 1"=10'

SHEET 5 OF 5 THIS PHASE

