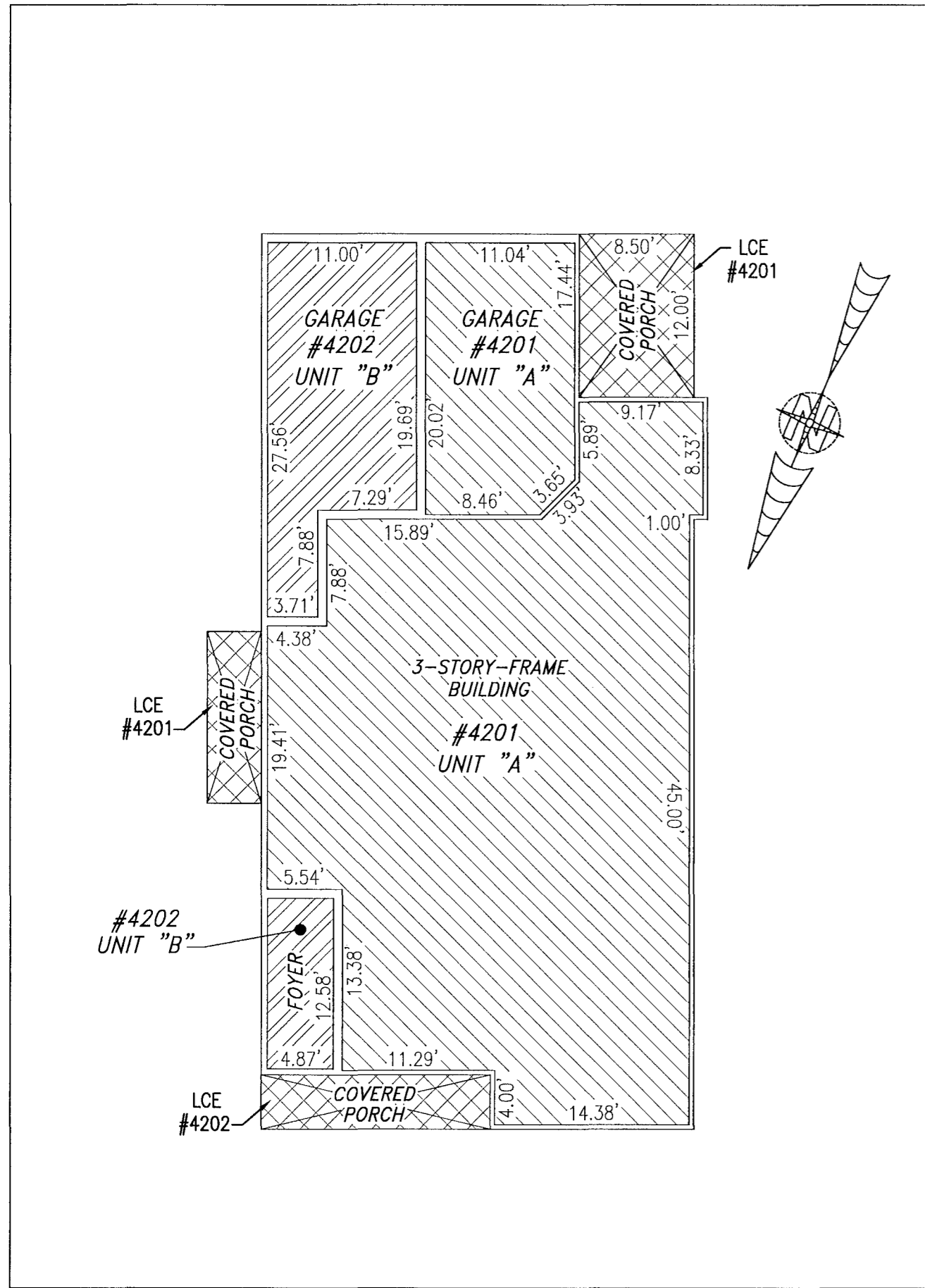
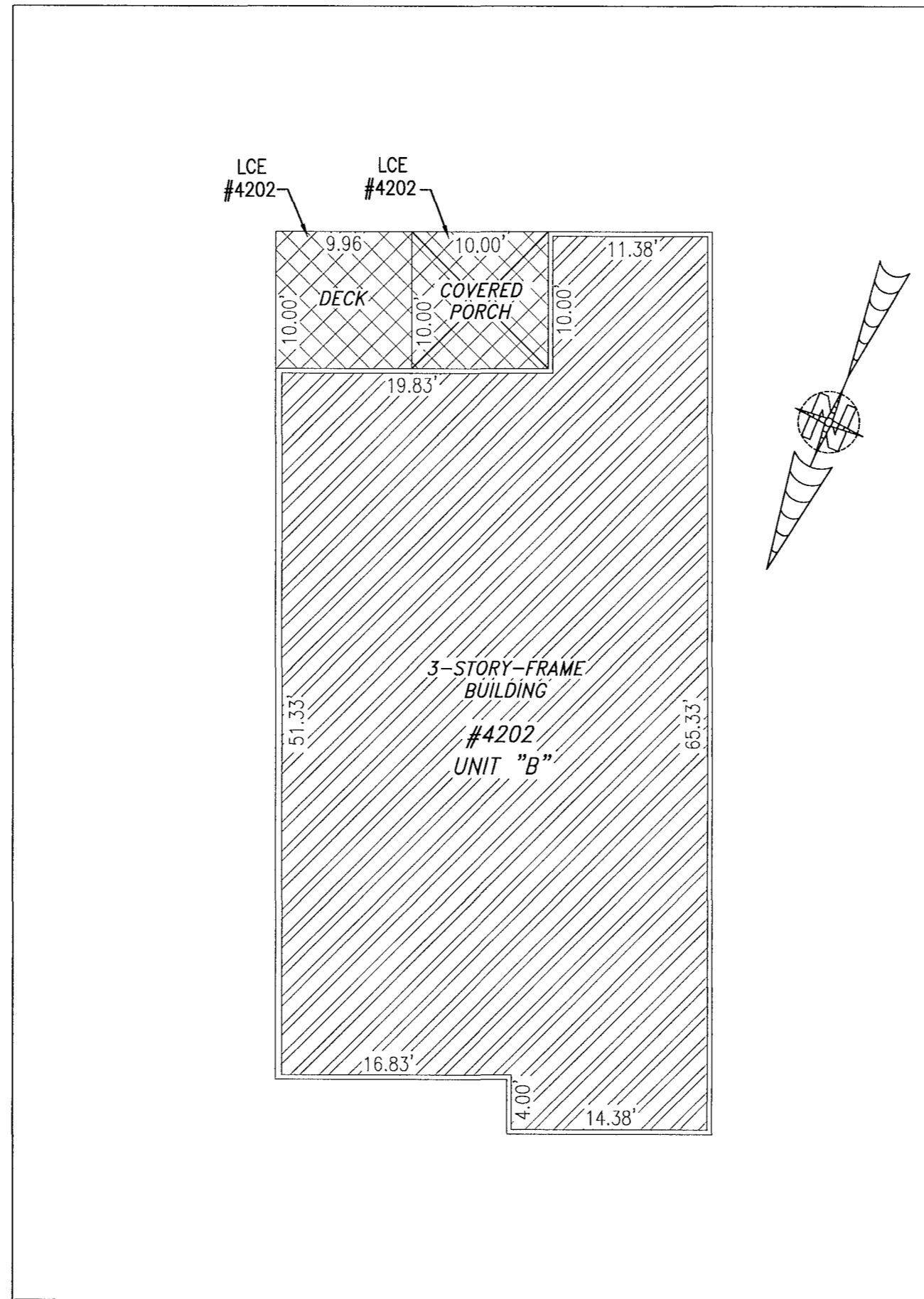


200004489

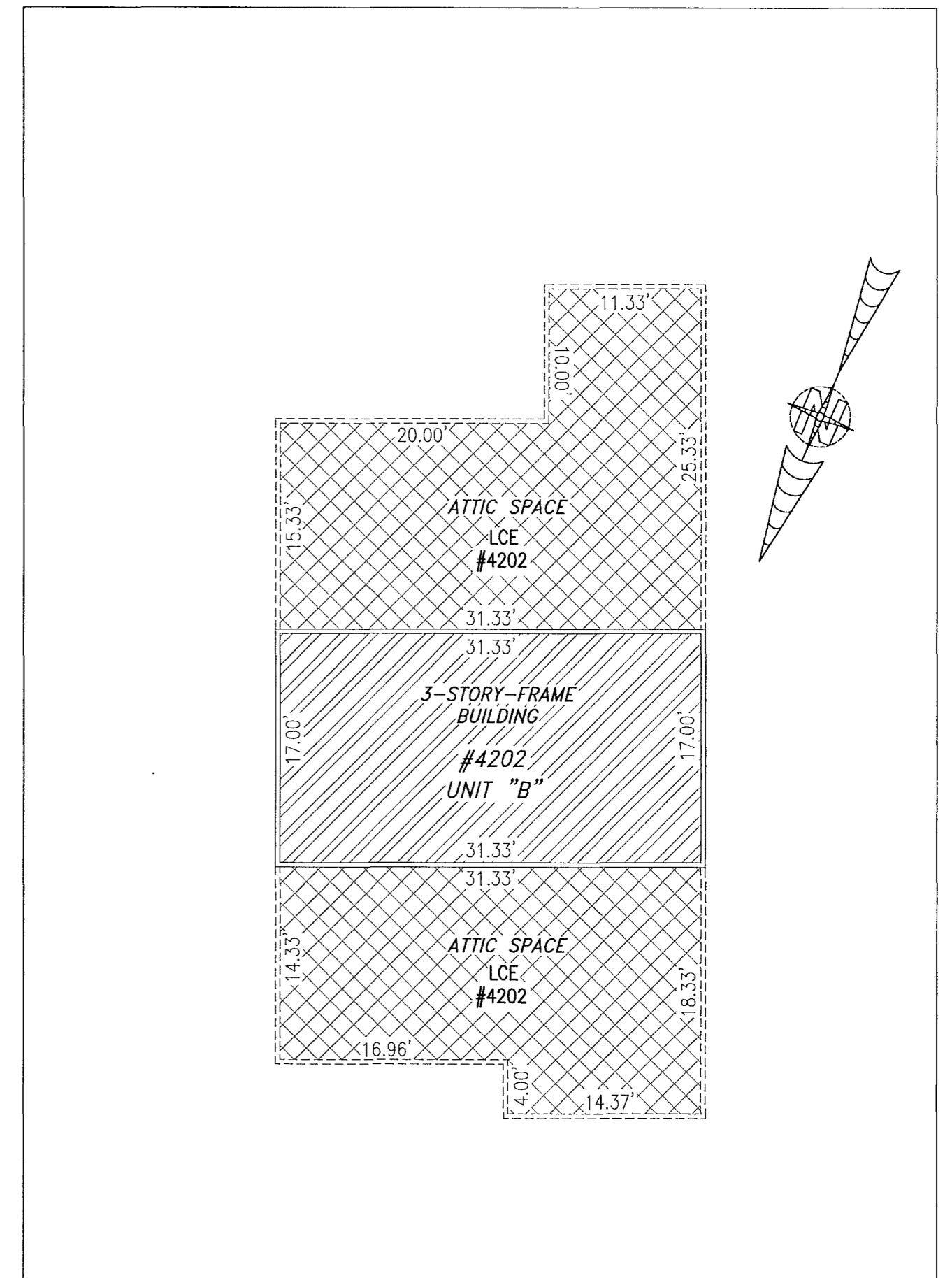
BUILDING 42 (DUPLEX)



FIRST FLOOR



SECOND FLOOR



THIRD FLOOR

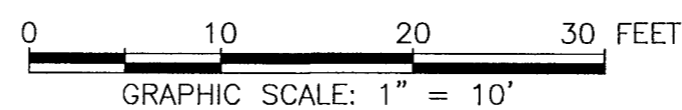
City of Williamsburg & County of James City
 Circuit Court: This PLAT was recorded on
3-27-2020
 at 10:47 AM/PM, PB — PG —
 Document # 200004489
 MONA A. FOLEY, CLERK
Mona A. Foley, Clerk

5 Large/Small Plat(s) Recorded
 herewith as # 200004489

I HEREBY CERTIFY THAT THIS PLAT IS ACCURATE AND THAT IT
 COMPLIES WITH THE PROVISIONS OF THE CODE OF VIRGINIA OF 1950
 AS AMENDED, § 55.1-1920A & B AND I FURTHER CERTIFY THAT ALL
 IMPROVEMENTS THEREOF DEPICTED HEREON, PURSUANT TO THE CODE
 OF VIRGINIA § 55.1-1920B, ARE SUBSTANTIALLY COMPLETE.



UNIT ID	UNIT DESCRIPTION	UNIT ADDRESS
A	-INDICATES AREA OF UNIT 4201	#4201 BALLATA ROAD
B	-INDICATES AREA OF UNIT 4202	#4202 BALLATA ROAD
	-INDICATES COMMON ELEMENT	
	-INDICATES LIMITED COMMON ELEMENT	

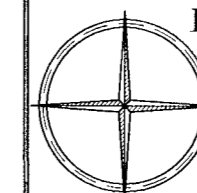


JCC Subdivision Agent *EFV*
 Approval Not Required

THIS SHEET: FLOOR PLANS

PHASE 42
 CONDOMINIUM PLAT AND PLAN
 OF
THE PROMENADE
 AT
JOHN TYLER
 A CONDOMINIUM
 JAMES CITY COUNTY, VIRGINIA

Jo# 160921



Hayden Frye and Associates, Inc.
Land Surveyors

333 KELLAM ROAD, SUITE 200
 VIRGINIA BEACH, VA., 23462
 PH: (757) 491-7228 FX: (757) 491-7229

DATE: MARCH 7, 2020

SCALE: 1"=10'

SHEET 5 OF 5 THIS PHASE