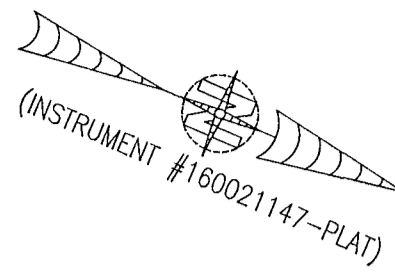
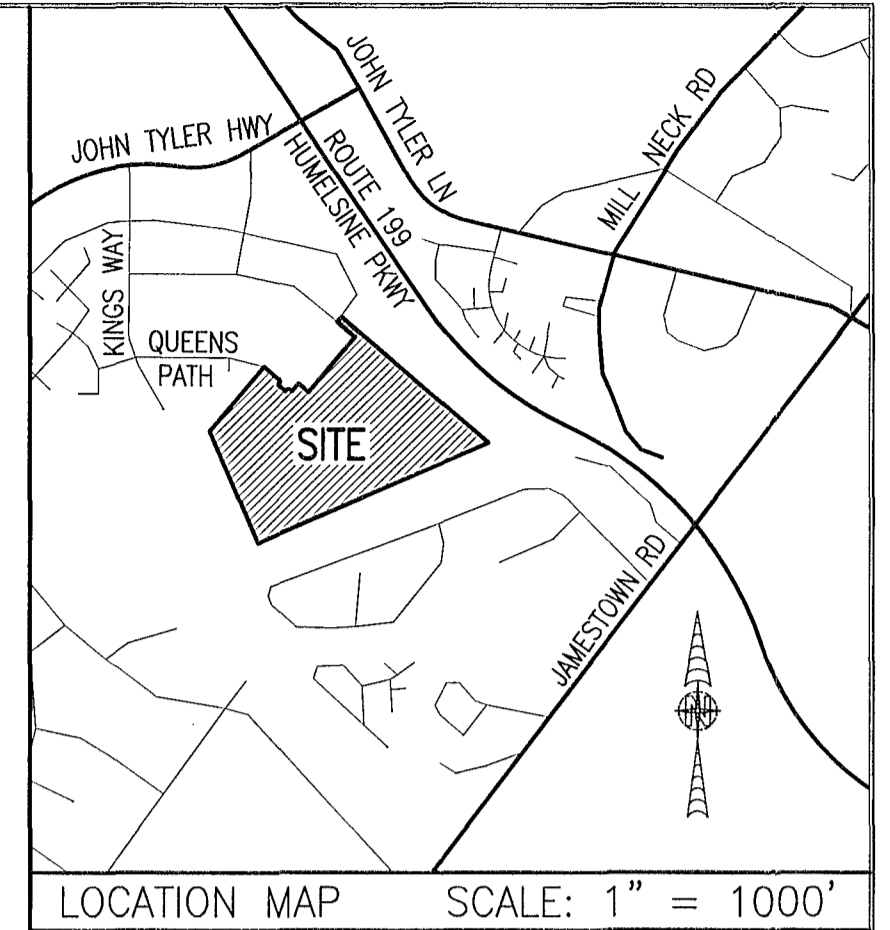
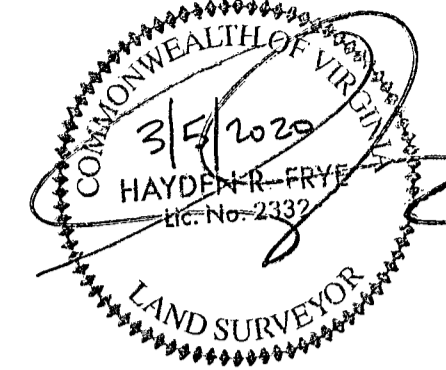


20003789

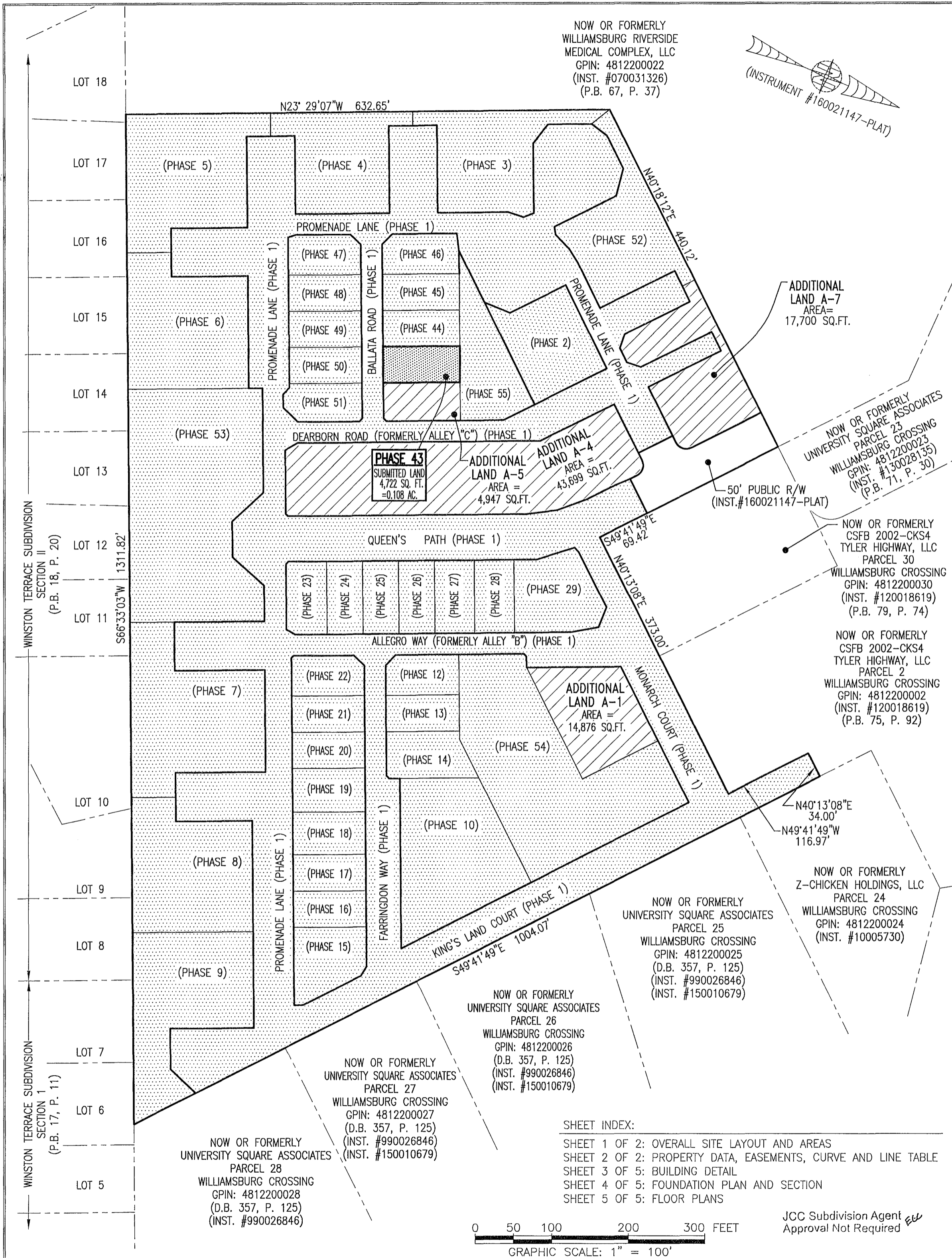
NOW OR FORMERLY
WILLIAMSBURG RIVERSIDE
MEDICAL COMPLEX, LLC
GPIN: 4812200022
(INST. #070031326)
(P.B. 67, P. 37)



I HEREBY CERTIFY THAT THIS PLAT IS ACCURATE AND THAT IT COMPLIES WITH THE PROVISIONS OF THE CODE OF VIRGINIA OF 1950 AS AMENDED, § 55.1-1920A & B AND I FURTHER CERTIFY THAT ALL IMPROVEMENTS THEREOF DEPICTED HEREON, PURSUANT TO THE CODE OF VIRGINIA § 55.1-1920A, ARE SUBSTANTIALLY COMPLETE.



LOCATION MAP SCALE: 1" = 1000'



AREA TABLE				
PHASE	BLDG#	STATUS/RECORDATION	SQUARE FEET	ACRES
1	N/A	INSTR.#170011679	268,468	6.163
2	2	INSTR.#200001502	13,027	0.299
3	3	INSTR.#190014842	19,053	0.437
4	4	INSTR.#190007409	17,652	0.405
5	5	INSTR.#190001499	26,166	0.601
6	6	INSTR.#180018358	24,875	0.571
7	7	INSTR.#180014663	28,822	0.662
8	8	INSTR.#180010369	24,539	0.563
9	9	INSTR.#180003694	25,978	0.596
10	10	INSTR.#170023466	25,806	0.592
12	12	INSTR.#180016847	4,949	0.114
13	13	INSTR.#180010007	4,512	0.104
14	14	INSTR.#180009579	6,462	0.148
15	15	INSTR.#190001143	7,841	0.180
16	16	INSTR.#190001141	4,467	0.103
17	17	INSTR.#190001140	4,467	0.103
18	18	INSTR.#180019704	5,273	0.121
19	19	INSTR.#180019705	5,367	0.123
20	20	INSTR.#180016210	4,465	0.103
21	21	INSTR.#180016209	4,465	0.103
22	22	INSTR.#180016208	4,892	0.112
23	23	INSTR.#180001768	5,014	0.115
24	24	INSTR.#180005480	4,464	0.102
25	25	INSTR.#180001779	4,466	0.103
26	26	INSTR.#170021156	4,465	0.102
27	27	INSTR.#170021157	4,944	0.114
28	28	INSTR.#180001781	4,936	0.113
29	29	NOT YET RECORDED	10,569	0.243
43	43	SUBSTANTIALLY COMPLETE	4,722	0.108
44	44	INSTR.#200003372	4,722	0.108
45	45	INSTR.#200002243	4,722	0.108
46	46	INSTR.#200000900	5,153	0.118
47	47	INSTR.#190009757	4,879	0.112
48	48	INSTR.#190010971	4,465	0.103
49	49	INSTR.#190011650	4,465	0.102
50	50	INSTR.#190013854	4,465	0.103
51	51	INSTR.#190014841	4,848	0.111
52	1	INSTR.#190017561	18,301	0.420
53	N/A	INSTR.#180014662	49,886	1.145
54	N/A	INSTR.#190007408	43,080	0.989
55	N/A	INSTR.#190011651	11,268	0.259
ADDITIONAL LAND A-1			14,876	0.341
ADDITIONAL LAND A-4			43,699	1.003
ADDITIONAL LAND A-5			4,974	0.114
ADDITIONAL LAND A-7			17,700	0.406
TOTAL: NEW PARCEL 29			816,629	18.747

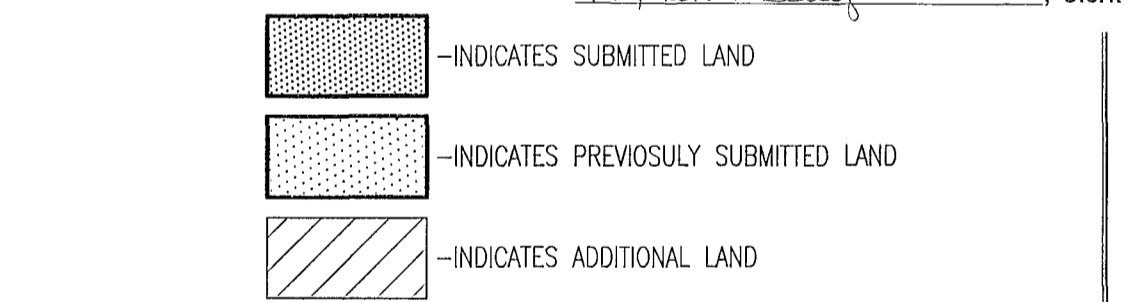
LEGAL DESCRIPTION

PROPERTY SHOWN HEREON BEING "NEW PARCEL 29" CONTAINING 18.747 ACRES AS SHOWN ON "PLAT OF LOT LINE EXTINGUISHMENT BEING PARCELS 20 AND 29 OF WILLIAMSBURG CROSSING" PREPARED BY AES CONSULTING ENGINEERS, DATED 10-24-16 AND RECORDED AS INSTRUMENT NO. 160021147.

NOTES:

- PHASE 43 BUILDING 43 IS SUBSTANTIALLY COMPLETE.
- EASEMENTS AND BUILDING LINES SHOWN HEREON PER THE FOLLOWING:
 - ALTA SURVEY BY AES CONSULTING ENGINEERS, DATED 3-23-15
 - PLAT BY AES CONSULTING ENGINEERS, DATED 10-24-16, INST.#160021147
 - PLAN OF DEVELOPMENT BY AES CONSULTING ENGINEERS, DATED 9-8-16

City of Williamsburg & County of James City
Circuit Court: This PLAT was recorded on
Mar. 12, 2020
at 10:15 AM/PM, PB _____ PG _____
Document # 200003789
MONA A. FOLEY, CLERK
Mona A. Foley, Clerk



THIS SHEET: OVERALL SITE LAYOUT AND AREAS

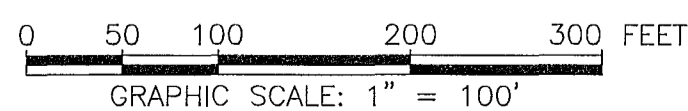
PHASE 43
CONDOMINIUM PLAT AND PLAN
OF
THE PROMENADE
AT
JOHN TYLER
A CONDOMINIUM
JAMES CITY COUNTY, VIRGINIA

DATE: MARCH 2, 2020
SCALE: 1"=100'
SHEET 1 OF 5 THIS PHASE

Hayden Frye and Associates, Inc.
Land Surveyors
333 KELLAM ROAD, SUITE 200
VIRGINIA BEACH, VA., 23462
PH: (757) 491-7228 FX: (757) 491-7229

SHEET INDEX:

- SHEET 1 OF 2: OVERALL SITE LAYOUT AND AREAS
- SHEET 2 OF 2: PROPERTY DATA, EASEMENTS, CURVE AND LINE TABLE
- SHEET 3 OF 5: BUILDING DETAIL
- SHEET 4 OF 5: FOUNDATION PLAN AND SECTION
- SHEET 5 OF 5: FLOOR PLANS



JCG Subdivision Agent
Approval Not Required