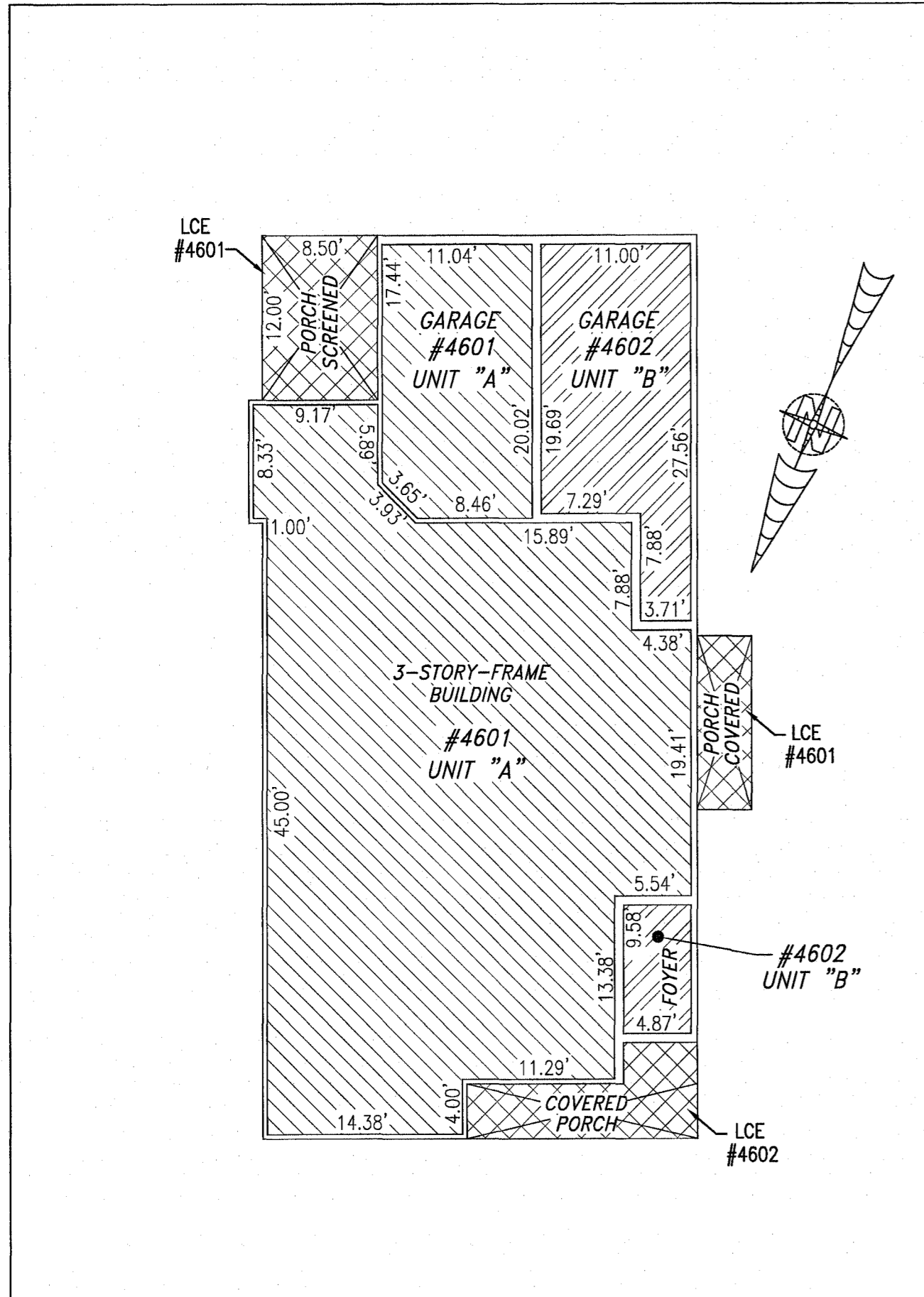
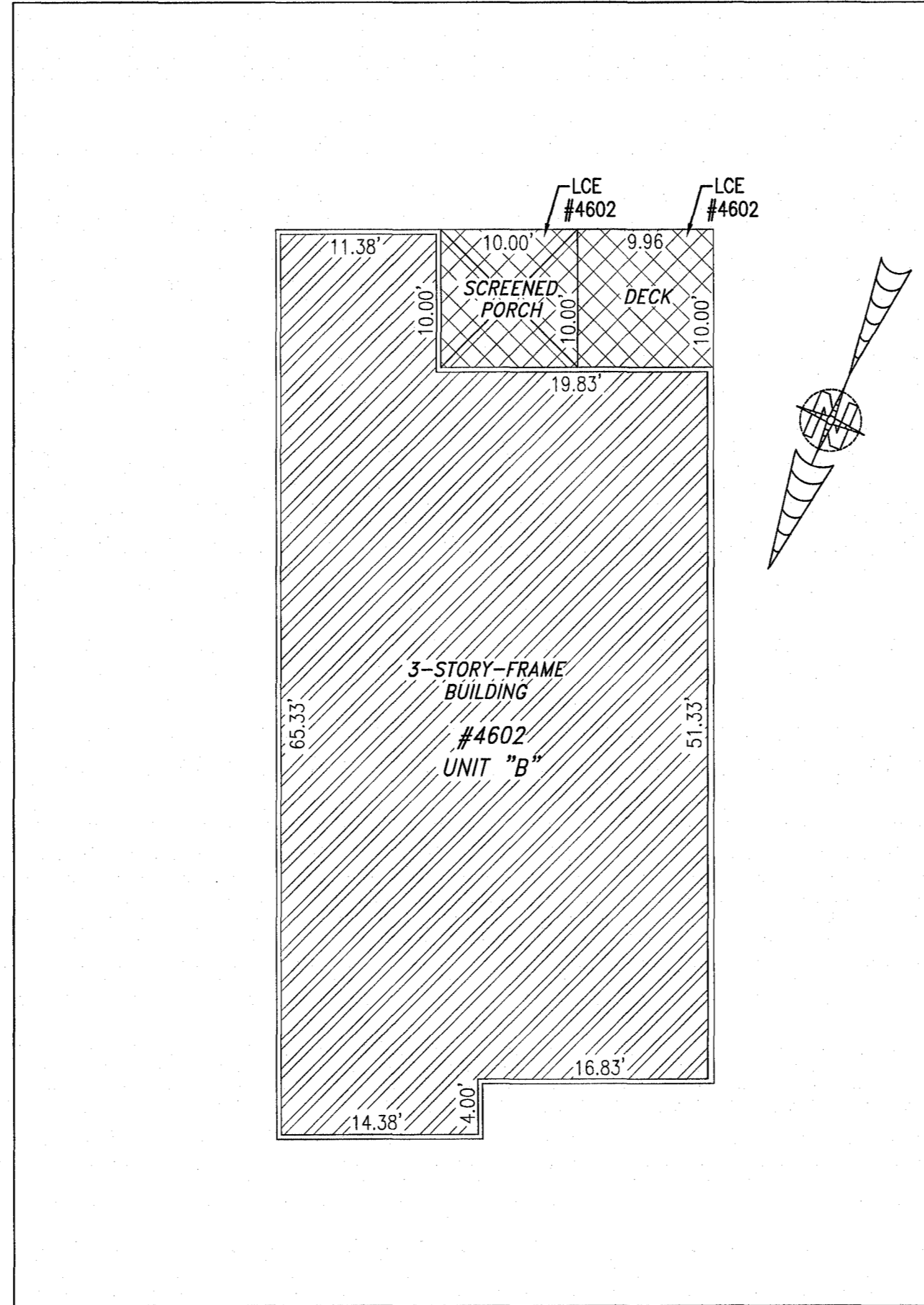


20000900

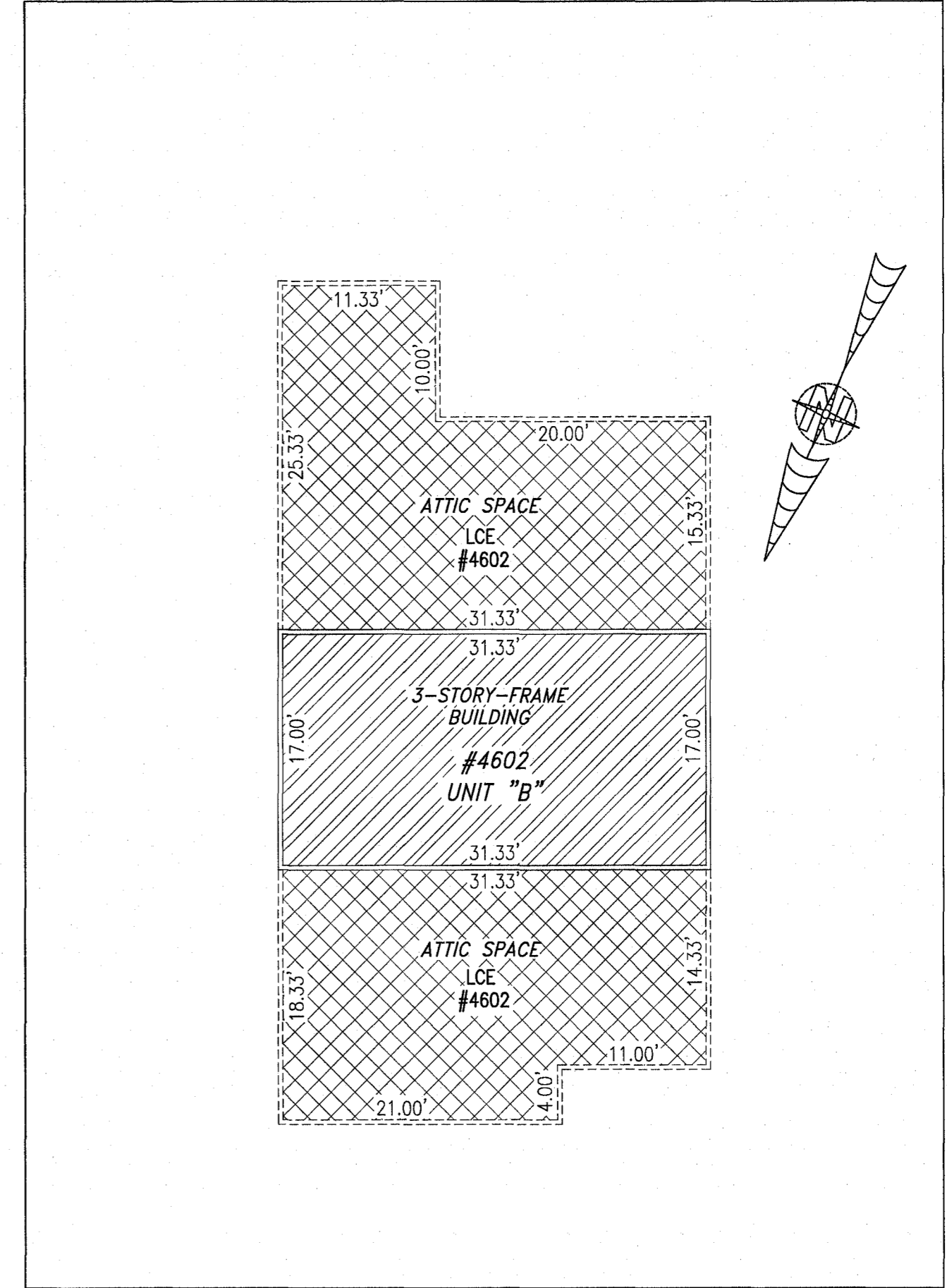
BUILDING 46 (DUPLEX)



FIRST FLOOR



SECOND FLOOR



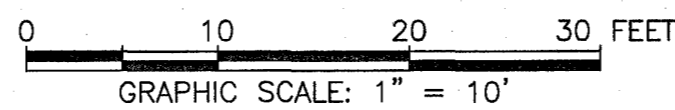
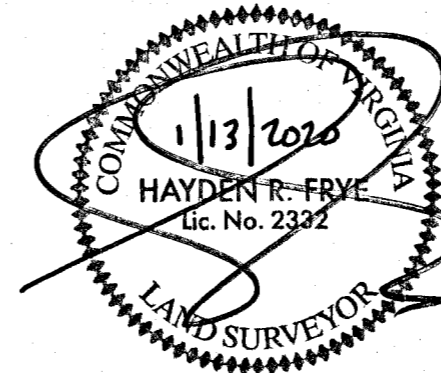
THIRD FLOOR

| UNIT ID | UNIT DESCRIPTION                  | UNIT ADDRESS       |
|---------|-----------------------------------|--------------------|
| A       | -INDICATES AREA OF UNIT 4601      | #4601 BALLATA ROAD |
| B       | -INDICATES AREA OF UNIT 4602      | #4602 BALLATA ROAD |
|         | -INDICATES COMMON ELEMENT         |                    |
|         | -INDICATES LIMITED COMMON ELEMENT |                    |

5 Large/Small Plat(s) Recorded  
herewith as # 20000900

I HEREBY CERTIFY THAT THIS PLAT IS ACCURATE AND THAT IT COMPLIES WITH THE PROVISIONS OF THE CODE OF VIRGINIA OF 1950 AS AMENDED, § 55.1-1920A & B AND I FURTHER CERTIFY THAT ALL IMPROVEMENTS THEREOF DEPICTED HEREON, PURSUANT TO THE CODE OF VIRGINIA § 55.1-1920B, ARE SUBSTANTIALLY COMPLETE.

City of Williamsburg & County of James City  
Circuit Court: This PLAT was recorded on  
January 21, 2020  
at 2:48 AM/PM, PB      PG       
Document # 20000900  
MONA A. FOLEY, CLERK  
*Mona A. Foley*, Clerk

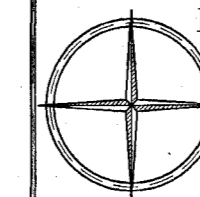


JCC Subdivision Agent *Ebl*  
Approval Not Required

THIS SHEET: FLOOR PLANS

PHASE 46  
CONDOMINIUM PLAT AND PLAN  
OF  
THE PROMENADE  
AT  
JOHN TYLER  
A CONDOMINIUM  
JAMES CITY COUNTY, VIRGINIA

Jo# 160921



Hayden Frye and Associates, Inc.  
Land Surveyors  
333 KELLAM ROAD, SUITE 200  
VIRGINIA BEACH, VA, 23462  
PH: (757) 491-7228 FX: (757) 491-7229

DATE: JANUARY 7, 2020  
SCALE: 1"=10'  
SHEET 5 OF 5 THIS PHASE