

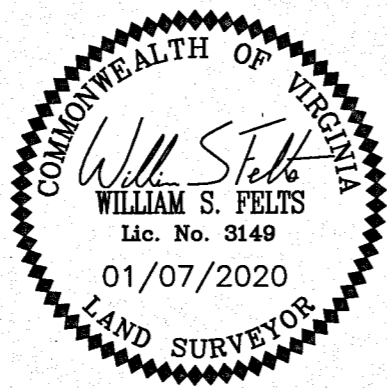
20000818

**SURVEYORS CERTIFICATE**

I HEREBY CERTIFY THAT THE PLAN PREVIOUSLY RECORDED FOR GOVERNOR'S GROVE AT FIVE FORKS, A CONDOMINIUM AT INSTRUMENT NO. 160009184 ACCURATELY DEPICTS THE UNIT AND RELATED IMPROVEMENTS SHOWN AND THAT THEY COMPLY WITH THE CODE OF VIRGINIA OF 1950, AS AMENDED §55-79.58(B) AND ARE SUBSTANTIALLY COMPLETE.

I HEREBY CERTIFY THAT THIS PLAT IS ACCURATE AND THAT IT COMPLIES WITH THE CODE OF VIRGINIA OF 1950, AS AMENDED, §55-79.58, AND I FURTHER CERTIFY THAT ALL IMPROVEMENTS OR PORTIONS THEREOF DEPICTED HEREON, PURSUANT TO THE CODE OF VIRGINIA, §55-79.58(A), ARE SUBSTANTIALLY COMPLETE.

*William S. Felts*  
WILLIAM S. FELTS LIC. #3149  
01/07/2020  
DATE



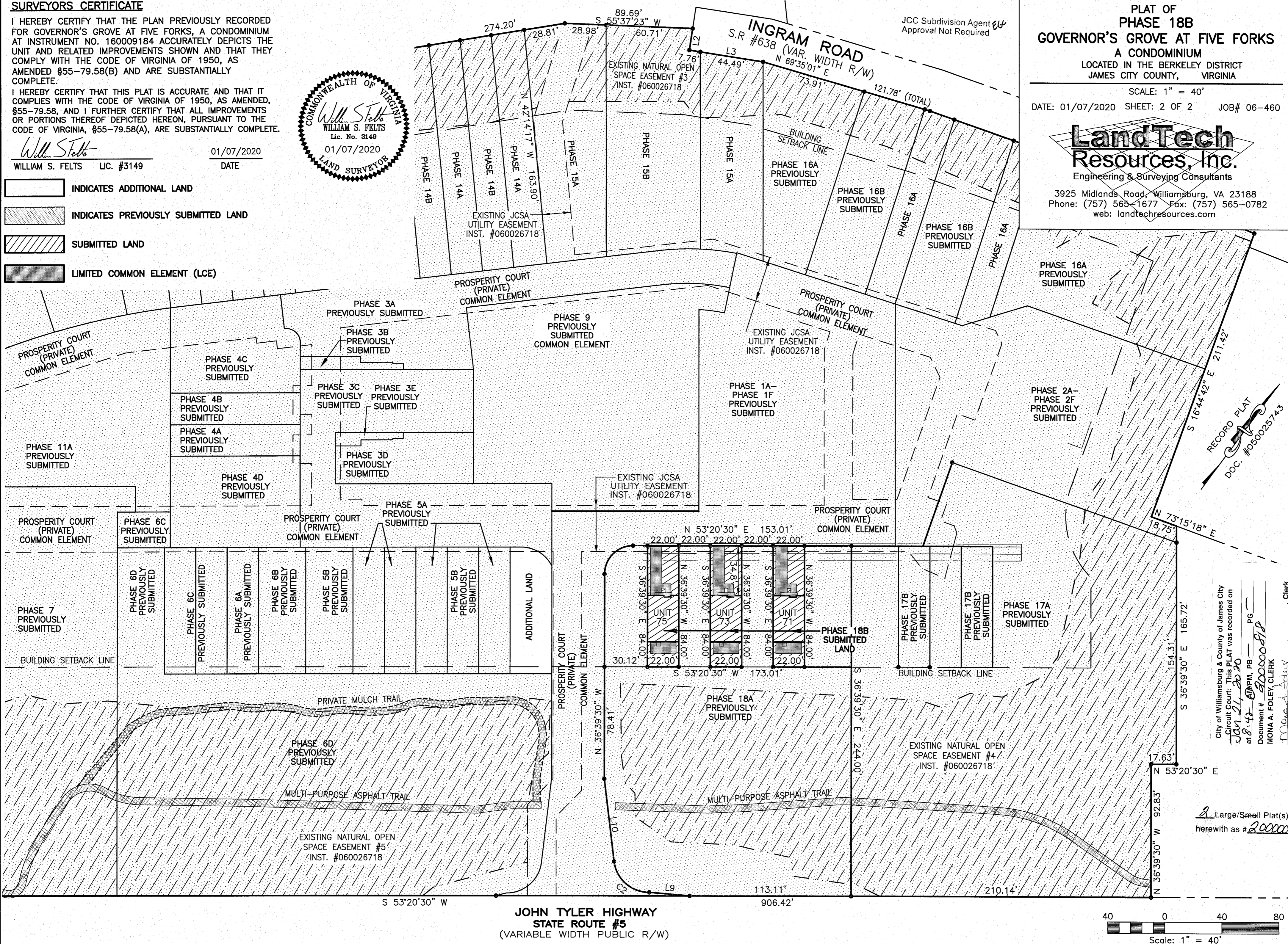
- INDICATES ADDITIONAL LAND
- INDICATES PREVIOUSLY SUBMITTED LAND
- SUBMITTED LAND
- LIMITED COMMON ELEMENT (LCE)

PLAT OF  
**PHASE 18B**  
**GOVERNOR'S GROVE AT FIVE FORKS**  
A CONDOMINIUM  
LOCATED IN THE BERKELEY DISTRICT  
JAMES CITY COUNTY, VIRGINIA

SCALE: 1" = 40'  
DATE: 01/07/2020 SHEET: 2 OF 2 JOB# 06-460



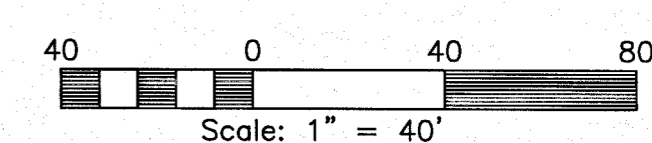
3925 Midlands Road, Williamsburg, VA 23188  
Phone: (757) 565-1677 Fax: (757) 565-0782  
web: landtechresources.com



RECORD PLAT  
DOC. #050025743

City of Williamsburg & County of James City  
Circuit Court: This PLAT was recorded on  
Jan 21, 2020  
at 8:47 AM, PB  
Document # 20000818  
MONA A. FOLEY, CLERK

Large/Small Plat(s) Recorded  
herewith as # 20000818



**JOHN TYLER HIGHWAY**  
**STATE ROUTE #5**  
(VARIABLE WIDTH PUBLIC R/W)