

190018547

SUBDIVISION OF  
STONEHOUSE TRACT 3  
**PARCEL "B" SECTION 2**  
LOTS 28 THROUGH 82 & LOT 153

STONEHOUSE DISTRICT JAMES CITY COUNTY VIRGINIA  
DATE: 11/18/2019 JOB # 17-378

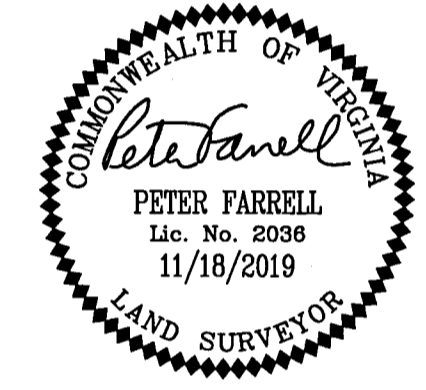
**LandTech Resources, Inc.**  
Engineering & Surveying Consultants  
3925 Midlands Road, Williamsburg, Virginia 23188  
Phone: (757) 565-1677 Fax: (757) 565-0782  
web: landtechresources.com

SHEET 5 OF 6

**JCC-S-19-0033**

**NOTE:**

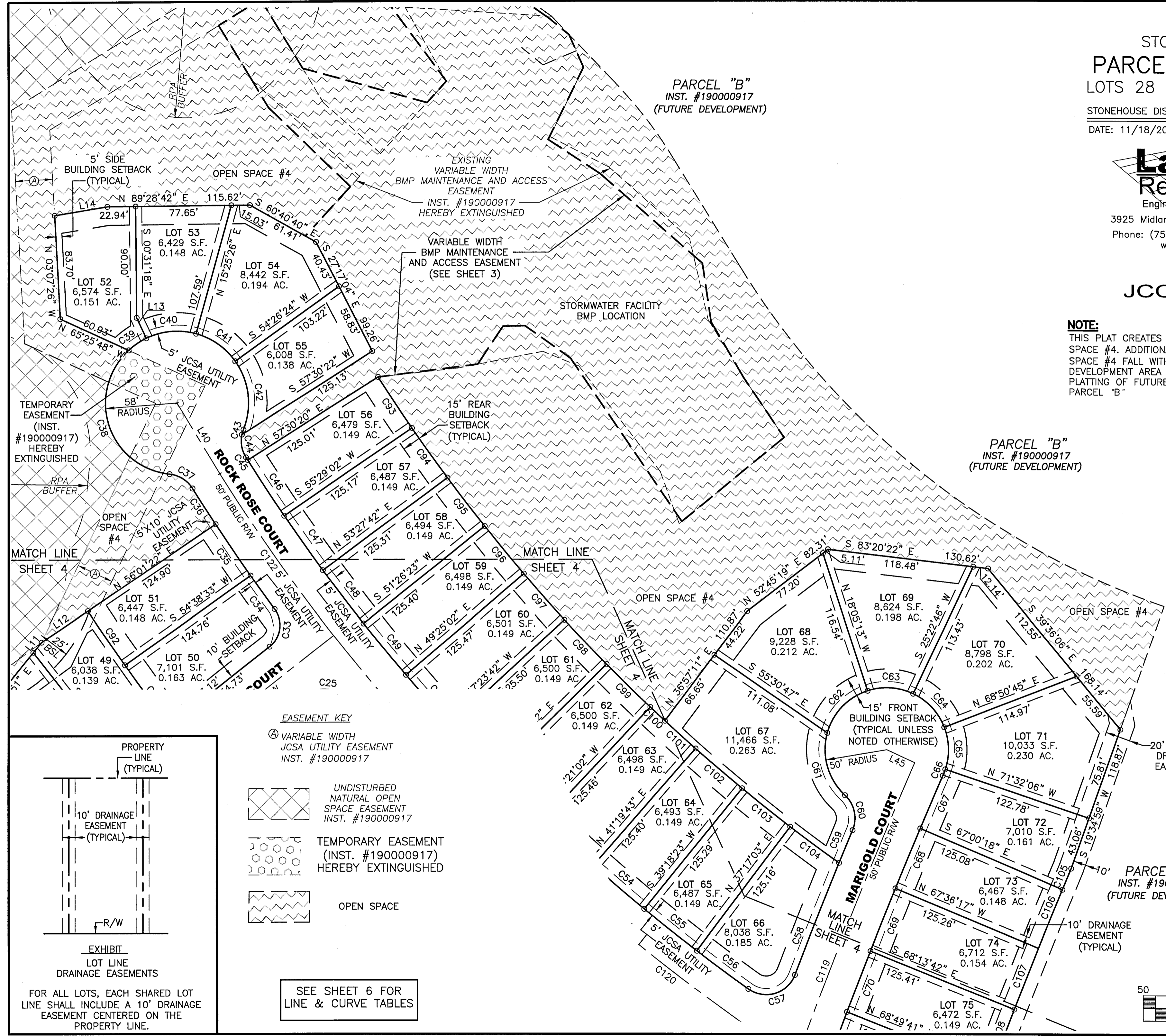
THIS PLAT CREATES 7.268 ACRES OF OPEN SPACE #4. ADDITIONAL AREAS OF OPEN SPACE #4 FALL WITHIN PARCEL "B" FUTURE DEVELOPMENT AREA AND WILL BE CREATED BY PLATTING OF FUTURE SUBDIVISION SECTIONS OF PARCEL "B"



PARCEL "B"  
INST. #190000917  
(FUTURE DEVELOPMENT)

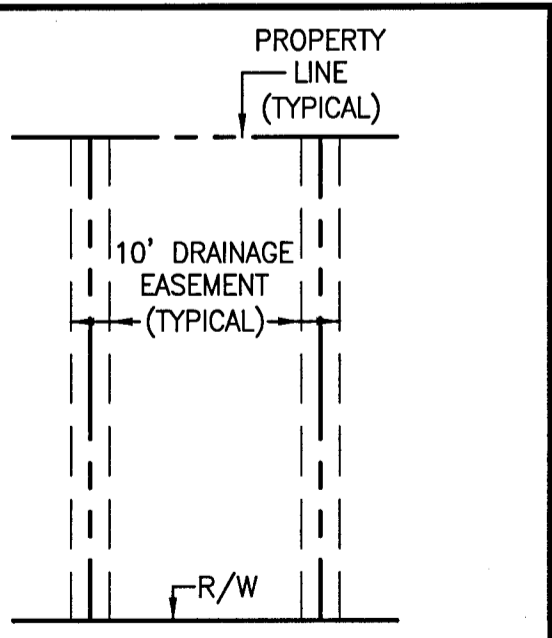
Large/Small Plat(s) Recorded  
herewith as # 190018547

City of Williamsburg & County of James City  
Circuit Court: This PLAT was recorded on  
December 16, 2019  
at 9:48 AM/PM, PB PG  
Document # 190018547  
MONA A. FOLEY, CLERK  
*Mona A. Foley*, Clerk



**EASEMENT KEY**  
⊙ VARIABLE WIDTH JCSA UTILITY EASEMENT INST. #190000917

- UNDISTURBED NATURAL OPEN SPACE EASEMENT INST. #190000917
- TEMPORARY EASEMENT (INST. #190000917) HEREBY EXTINGUISHED
- OPEN SPACE



**EXHIBIT**  
LOT LINE DRAINAGE EASEMENTS  
FOR ALL LOTS, EACH SHARED LOT LINE SHALL INCLUDE A 10' DRAINAGE EASEMENT CENTERED ON THE PROPERTY LINE.

SEE SHEET 6 FOR  
LINE & CURVE TABLES

