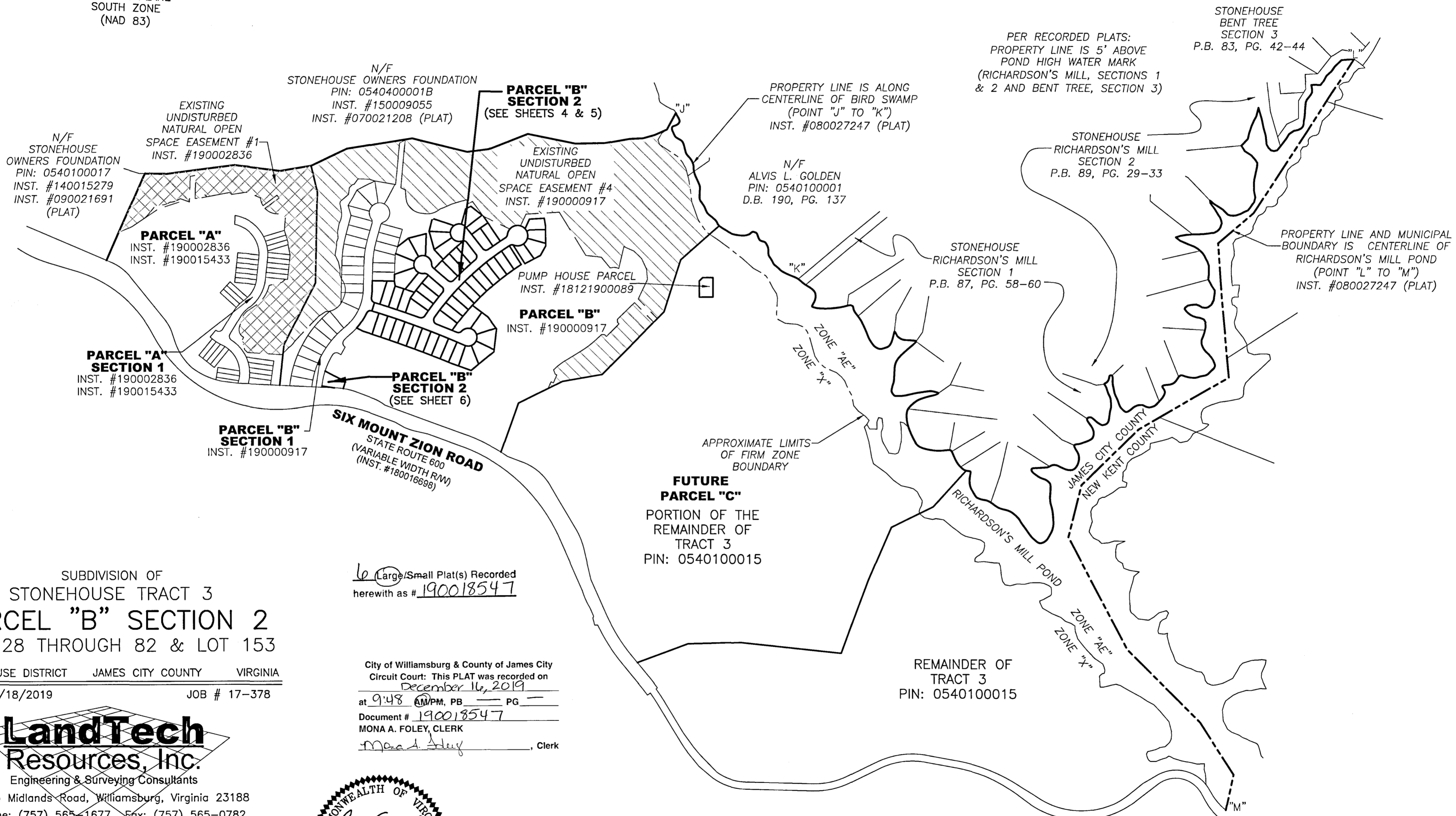


190018547

### STONEHOUSE TRACT 3

VA STATE PLANE  
SOUTH ZONE  
(NAD 83)



SUBDIVISION OF  
STONEHOUSE TRACT 3  
**PARCEL "B" SECTION 2**  
LOTS 28 THROUGH 82 & LOT 153

STONEHOUSE DISTRICT JAMES CITY COUNTY VIRGINIA  
DATE: 11/18/2019 JOB # 17-378

**LandTech**  
Resources, Inc.  
Engineering & Surveying Consultants

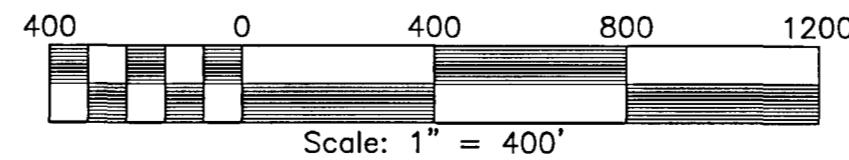
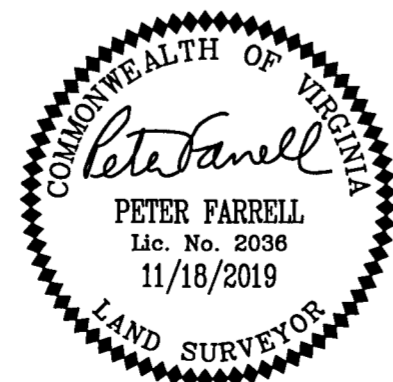
3925 Midlands Road, Williamsburg, Virginia 23188  
Phone: (757) 565-1677 Fax: (757) 565-0782  
web: landtechresources.com

SHEET 2 OF 6

JCC-S-19-0033

Large/Small Plat(s) Recorded  
herewith as # 190018547

City of Williamsburg & County of James City  
Circuit Court: This PLAT was recorded on  
December 16, 2019  
at 9:48 AM/PM, PB PG  
Document # 190018547  
MONA A. FOLEY, CLERK  
*Mona A. Foley*, Clerk



**NOTE:**  
THIS PLAT CREATES 7.268 ACRES OF OPEN SPACE #4. ADDITIONAL AREAS OF OPEN SPACE #4 FALL WITHIN PARCEL "B" FUTURE DEVELOPMENT AREA AND WILL BE CREATED BY PLATTING OF FUTURE SUBDIVISION SECTIONS OF PARCEL "B"