

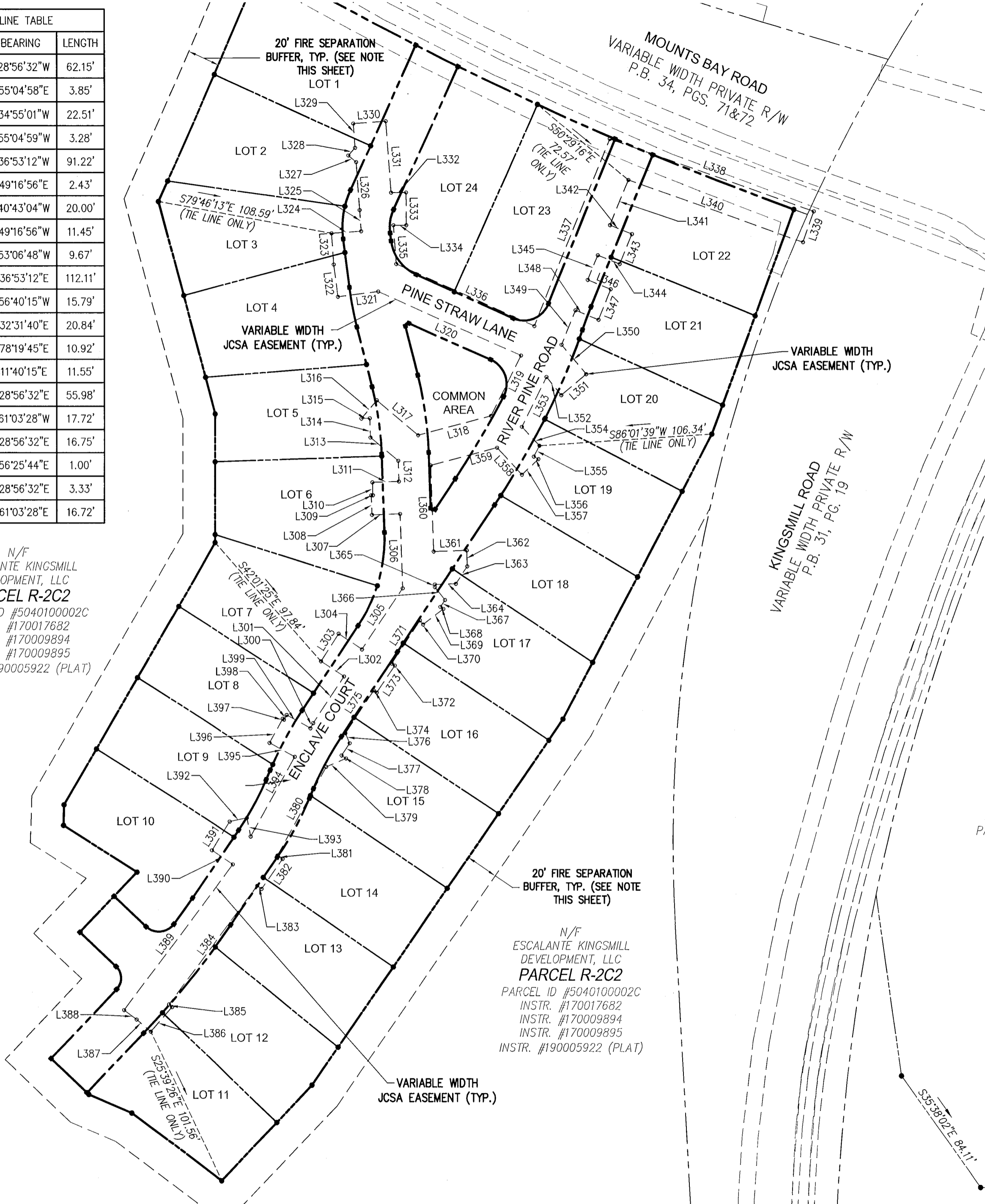
190017999

LINE	BEARING	LENGTH
L300	N28°56'32"E	3.60'
L301	N33°31'40"E	34.40'
L302	N56°28'20"W	17.00'
L303	N32°48'46"E	20.00'
L304	S56°28'20"E	17.25'
L305	N33°31'40"E	45.17'
L306	N1°59'54"W	45.60'
L307	S88°00'06"W	17.25'
L308	N1°59'54"W	12.13'
L309	N88°00'06"E	1.00'
L310	N1°59'54"W	7.87'
L311	N88°00'06"E	16.25'
L312	N1°59'54"W	12.54'
L313	N49°53'00"W	22.24'
L314	N1°59'54"W	11.92'
L315	S88°00'06"W	5.18'
L316	N40°07'00"E	14.63'
L317	S49°53'00"E	33.31'
L318	N75°04'45"E	46.53'
L319	N26°29'06"E	41.39'
L320	N66°00'05"W	96.35'
L321	S82°35'50"W	24.94'
L322	N7°24'10"W	19.99'
L323	N4°05'09"W	19.34'
L324	N85°54'51"E	18.28'
L325	N4°05'09"W	12.91'
L326	N4°11'08"W	29.66'
L327	N49°11'08"W	6.27'
L328	N40°48'52"E	6.27'
L329	N4°11'08"W	14.86'
L330	N85°48'52"E	20.00'
L331	S4°11'08"E	44.04'
L332	N89°39'49"E	9.20'
L333	S0°20'11"E	20.00'
L334	S89°39'49"W	7.88'
L335	S4°05'09"E	23.95'
L336	S66°00'05"E	93.25'
L337	N22°00'52"E	124.10'
L338	S70°28'28"E	133.49'
L339	S19°31'32"W	20.00'

LINE	BEARING	LENGTH
L340	N70°28'28"W	114.34'
L341	S22°00'52"W	29.93'
L342	S67°59'08"E	14.50'
L343	S22°00'52"W	20.00'
L344	N67°59'08"W	14.50'
L345	S22°00'52"W	16.51'
L346	S67°59'08"E	15.25'
L347	S22°00'52"W	20.00'
L348	N67°59'08"W	15.25'
L349	S22°00'52"W	22.87'
L350	S39°50'25"E	23.70'
L351	S50°09'35"W	20.00'
L352	N39°50'25"W	14.39'
L353	S26°29'06"W	34.12'
L354	S42°56'52"E	15.98'
L355	S27°31'40"W	7.56'
L356	S62°28'20"E	3.24'
L357	S47°03'08"W	13.95'
L358	N42°56'52"W	22.49'
L359	S75°04'45"W	42.28'
L360	S1°59'54"E	52.92'
L361	N88°00'06"E	20.32'
L362	S1°59'54"E	9.70'
L363	S33°31'40"W	12.66'
L364	S88°00'06"W	12.96'
L365	S1°59'54"E	1.66'
L366	S37°50'57"E	10.11'
L367	S33°31'40"W	5.15'
L368	S56°28'20"E	2.20'
L369	S52°09'03"W	15.82'
L370	N37°50'57"W	3.16'
L371	S33°31'40"W	31.58'
L372	S56°28'20"E	2.25'
L373	S33°31'40"W	20.00'
L374	N56°28'20"W	2.25'
L375	S33°31'40"W	31.47'
L376	S23°08'21"E	6.58'
L377	S33°31'40"W	9.02'
L378	S56°28'20"E	3.31'
L379	S66°51'39"W	13.29'

LINE	BEARING	LENGTH
L380	S28°56'32"W	62.15'
L381	S55°04'58"E	3.85'
L382	S34°55'01"W	22.51'
L383	N55°04'59"W	3.28'
L384	S36°53'12"W	91.22'
L385	S49°16'56"E	2.43'
L386	S40°43'04"W	20.00'
L387	N49°16'56"W	11.45'
L388	N53°06'48"W	9.67'
L389	N36°53'12"E	112.11'
L390	N56°40'15"W	15.79'
L391	N32°31'40"E	20.84'
L392	N78°19'45"E	10.92'
L393	S11°40'15"E	11.55'
L394	N28°56'32"E	55.98'
L395	N61°03'28"W	17.72'
L396	N28°56'32"E	16.75'
L397	S56°25'44"E	1.00'
L398	N28°56'32"E	3.33'
L399	S61°03'28"E	16.72'

N/F  
 ESCALANTE KINGSMILL  
 DEVELOPMENT, LLC  
**PARCEL R-2C2**  
 PARCEL ID #5040100002C  
 INSTR. #170017682  
 INSTR. #170009894  
 INSTR. #170009895  
 INSTR. #190005922 (PLAT)

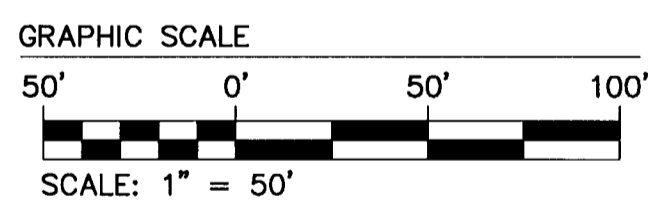
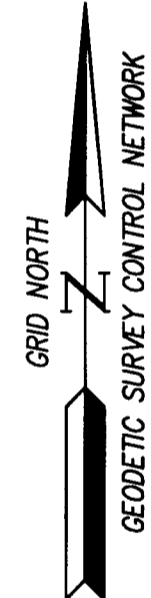


**FIRE SEPARATION BUFFER NOTE:**  
 THE REAR WALLS OF THE TOWNHOMES ARE NOT FIRE RATED AND A REAR SETBACK DOES NOT EXIST. THEREFORE, A 20 FT FIRE SEPARATION BUFFER AS SHOWN HEREON IS REQUIRED TO PREVENT FUTURE ENCROACHMENT.

SEE SHEETS 2 AND 3 FOR ROAD CENTERLINE AND BUILDING SETBACKS.

**ABBREVIATIONS:**  
 HOA = HOMEOWNER'S ASSOCIATION  
 TYP. = TYPICAL  
 N/F = NOW OR FORMERLY  
 ESMT = EASEMENT

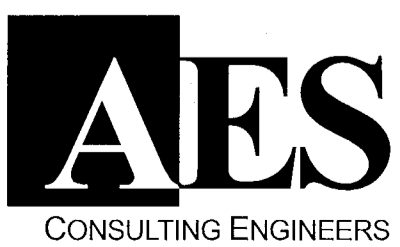
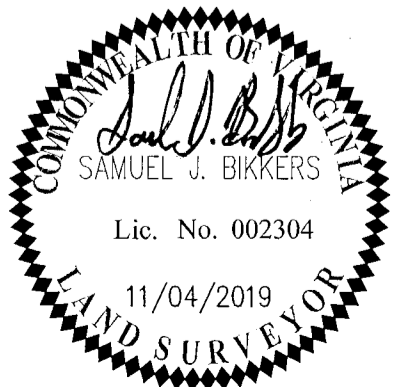
N/F  
 KINGSMILL COMMUNITY  
 SERVICES ASSOCIATION  
 PARCEL ID #5040600001A



JCSA EASEMENTS

1 Large/Small Plat(s) Recorded  
 herewith as # 190017999

City of Williamsburg & County of James City  
 Circuit Court: This PLAT was recorded on  
**DEC 4th 2019**  
 at 1:37 AM PM PB PG  
 Document # 190017999  
 MONA A. FOLEY, CLERK  
 Clerk



5248 Olde Towne Road, Suite 1  
 Williamsburg, Virginia 23188  
 Phone: (757) 253-0040  
 Fax: (757) 220-8994  
 www.aesva.com

REF: JCC CASE NO. S-18-0068

PLAT OF SUBDIVISION  
**KINGSMILL TOWNHOMES**  
**"THE ENCLAVE"**  
 FOR  
**ESCALANTE GOLF**  
 ROBERTS DISTRICT JAMES CITY COUNTY VIRGINIA

Project Contacts: GVC  
 Project Number: 7753-49  
 Scale: 1"=50'  
 Date: 05/13/2019  
 Sheet Number  
**6 OF 7**