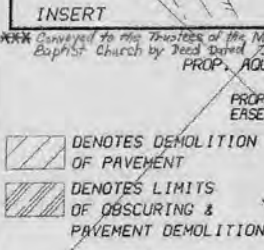
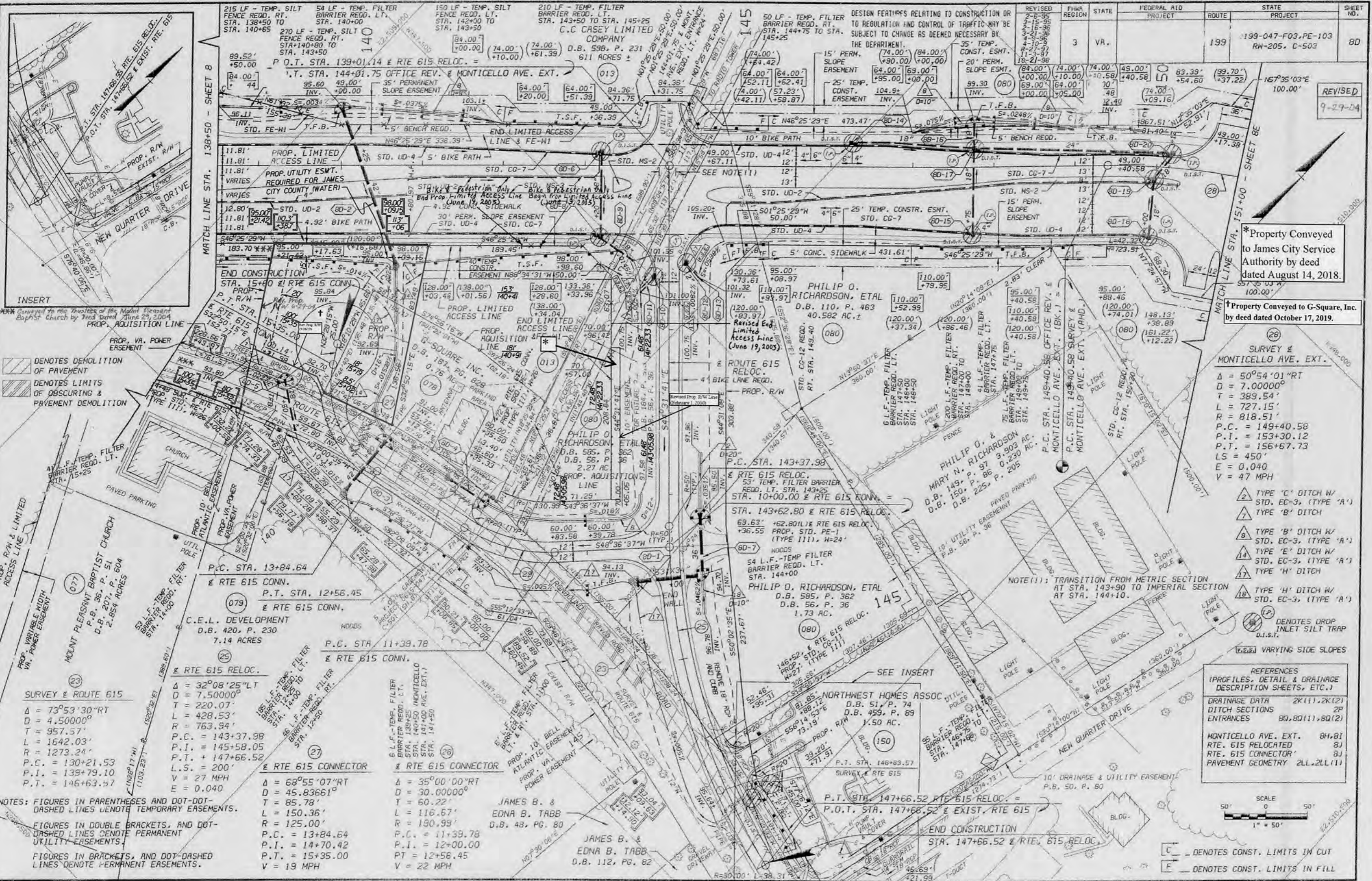


REVISED	FHWA REGION	STATE	FEDERAL AID PROJECT	ROUTE	STATE PROJECT	SHEET NO.
3-15-95 4-10-96 4-10-99 11-3-99 10-21-98	3	VA.		199	199-047-F03, PE-103 RW-205, C-503	80



SURVEY & ROUTE 615

Δ = 73°53'30"RT
 D = 4.500000°
 T = 957.57'
 L = 1642.03'
 R = 1273.24'
 P.C. = 130+21.53
 P.I. = 139+79.10
 P.T. = 146+63.57

Δ = 32°08'25"LT
 D = 7.500000°
 T = 220.07'
 L = 428.53'
 R = 763.94'
 P.C. = 143+37.98
 P.I. = 145+58.05
 P.T. = 147+66.52
 L.S. = 200'
 V = 27 MPH
 E = 0.040

Δ = 68°55'07"RT
 D = 45.83661°
 T = 85.78'
 L = 150.36'
 R = 125.00'
 P.C. = 13+84.64
 P.I. = 14+70.42
 P.T. = 15+35.00
 V = 19 MPH

Δ = 35°00'00"RT
 D = 30.00000°
 T = 60.22'
 L = 116.67'
 R = 190.99'
 P.C. = 11+39.78
 P.I. = 12+00.00
 P.T. = 12+56.45
 V = 22 MPH

Δ = 50°54'01"RT
 D = 7.000000°
 T = 389.54'
 L = 727.15'
 R = 818.51'
 P.C. = 149+40.58
 P.I. = 153+30.12
 P.T. = 156+67.73
 L.S. = 450'
 E = 0.040
 V = 47 MPH

NOTES: FIGURES IN PARENTHESES AND DOT-DOT-DASHED LINES DENOTE TEMPORARY EASEMENTS.
 FIGURES IN DOUBLE BRACKETS, AND DOT-DASHED LINES DENOTE PERMANENT UTILITY EASEMENTS.
 FIGURES IN BRACKETS, AND DOT-DASHED LINES DENOTE PERMANENT EASEMENTS.

SCALE
 1" = 50'

REFERENCES
 (PROFILES, DETAIL & DRAINAGE DESCRIPTION SHEETS, ETC.)
 DRAINAGE DATA 2K(1), 2K(2)
 DITCH SECTIONS 2P
 ENTRANCES 80, 80(1), 80(2)

MONTICELLO AVE. EXT. 8H, 8J
 RTE. 615 RELOCATED 8I
 RTE. 615 CONNECTOR 8J
 PAVEMENT GEOMETRY 2LL, 2LL(1)

C DENOTES CONST. LIMITS IN CUT
 F DENOTES CONST. LIMITS IN FILL

*Property Conveyed to James City Service Authority by deed dated August 14, 2018.

†Property Conveyed to G-Square, Inc. by deed dated October 17, 2019.