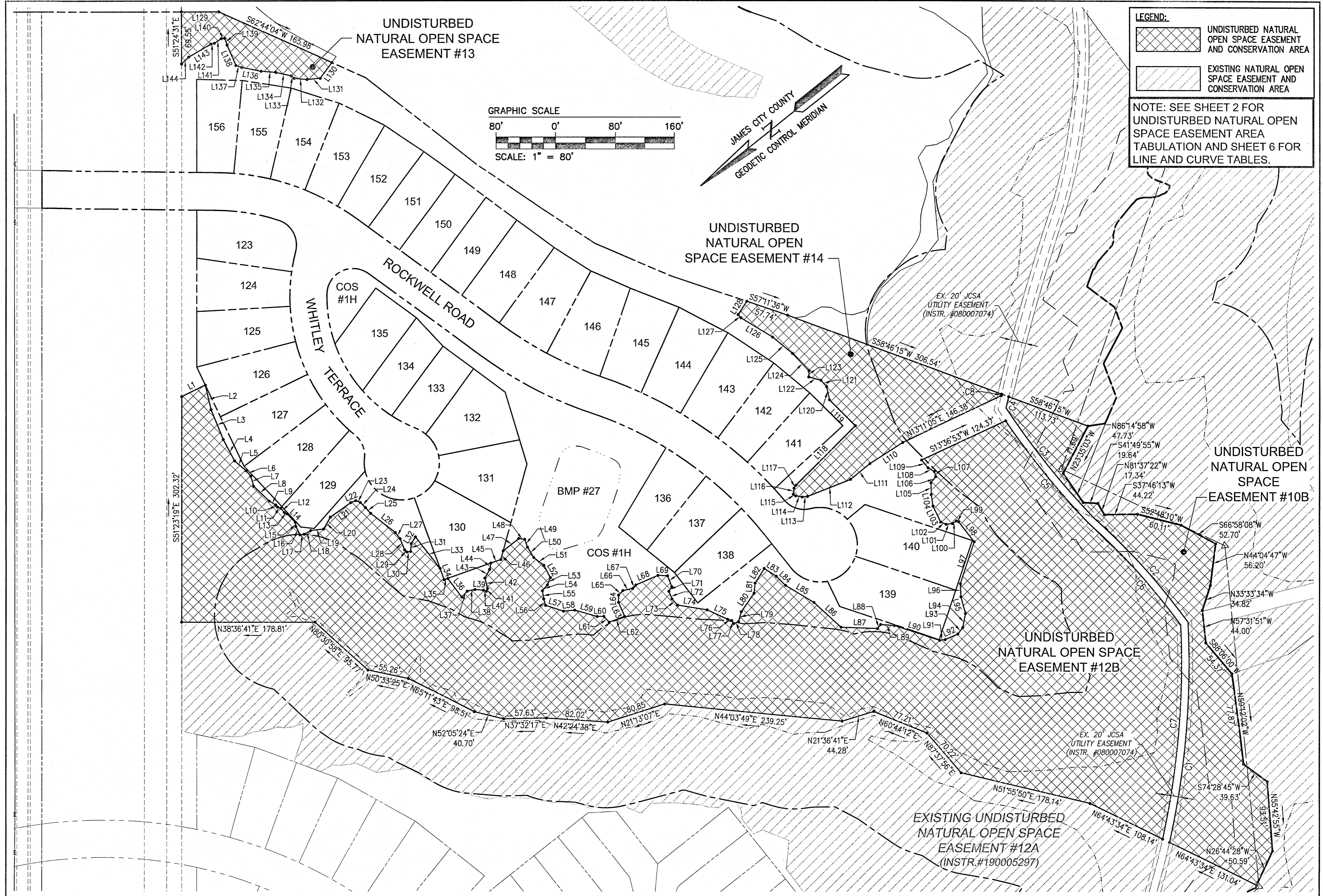
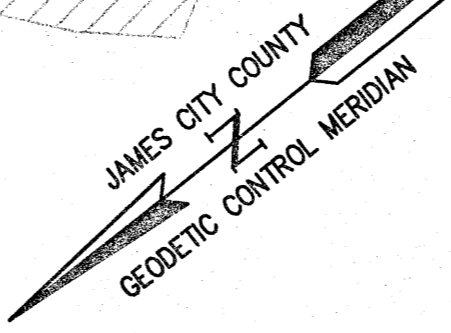
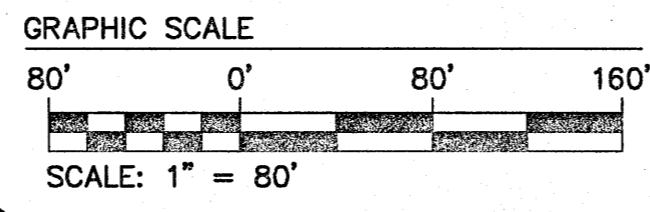


190016053



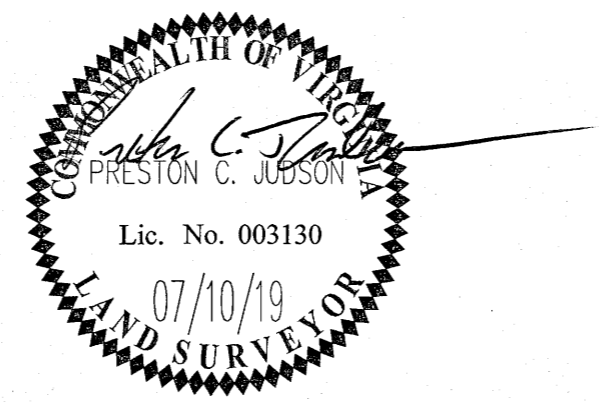
LEGEND:
 UNDISTURBED NATURAL OPEN SPACE EASEMENT AND CONSERVATION AREA
 EXISTING NATURAL OPEN SPACE EASEMENT AND CONSERVATION AREA

NOTE: SEE SHEET 2 FOR UNDISTURBED NATURAL OPEN SPACE EASEMENT AREA TABULATION AND SHEET 6 FOR LINE AND CURVE TABLES.



City of Williamsburg & County of James City
 Circuit Court: This PLAT was recorded on
 November 1, 2019
 at 11:16 AM PM, PB PG
 Document # 190016053
 MONA A. FOLEY, CLERK
 Clerk

1 07/10/19 REVISED PER JCC COMMENTS DATED 04/2019 RMS
 Rev. Date Description Revised By



AES
 CONSULTING ENGINEERS
 Hampton Roads | Central Virginia | Middle Peninsula
 5248 Olde Towne Road, Suite 1
 Williamsburg, Virginia 23188
 Phone: (757) 253-0040
 Fax: (757) 220-8994
 www.aesva.com

REF: JCC S-19-0023
 PLAT OF SUBDIVISION
 LOTS 123 THRU 156 AND COS #1H
**COLONIAL HERITAGE
 PHASE III - SECTION 2C**
 OWNER / DEVELOPER: COLONIAL HERITAGE, LLC
 STONEHOUSE DISTRICT JAMES CITY COUNTY VIRGINIA

Project Contacts: PCJ/TRS
 Project Number: 8881-32C
 Scale: 1"=80'
 Date: 03/12/19
 Sheet Number
5 of 6