

190016053

CURVE TABLE						
CURVE #	DELTA	RADIUS	LENGTH	TANGENT	CHORD	CHORD BEARING
C31	8°09'06"	500.00'	71.14'	35.63'	71.08'	S70°45'21"W
C32	8°52'14"	500.00'	77.41'	38.78'	77.33'	S62°14'41"W
C33	0°39'51"	500.00'	5.79'	2.90'	5.79'	S57°28'38"W
C34	17°41'11"	500.00'	154.34'	77.79'	153.73'	S65°59'19"W
C35	5°38'58"	550.00'	54.23'	27.14'	54.21'	S59°58'12"W
C36	6°15'13"	550.00'	60.03'	30.04'	60.00'	S65°55'18"W
C37	6°15'13"	550.00'	60.03'	30.04'	60.00'	S72°10'31"W
C38	5°18'53"	550.00'	51.02'	25.53'	51.00'	S77°57'34"W
C39	5°18'53"	550.00'	51.02'	25.53'	51.00'	S83°16'27"W
C40	2°07'52"	550.00'	20.46'	10.23'	20.46'	S86°59'49"W
C41	30°55'02"	550.00'	296.79'	152.10'	293.20'	S72°36'14"W
C42	63°59'38"	35.00'	39.09'	21.87'	37.09'	S56°03'56"W
C43	61°26'59"	50.00'	53.63'	29.72'	51.09'	S54°47'37"W
C44	61°33'05"	50.00'	53.71'	29.78'	51.17'	N63°42'21"W
C45	60°02'37"	50.00'	52.40'	28.89'	50.03'	N2°54'31"W
C46	62°53'12"	50.00'	54.88'	30.57'	52.17'	N58°33'24"E
C47	245°55'53"	50.00'	214.62'	77.09'	83.90'	N32°57'56"W
C48	5°17'47"	500.00'	46.22'	23.13'	46.20'	N87°21'07"E
C49	7°20'20"	500.00'	64.04'	32.07'	64.00'	N81°02'03"E
C50	7°33'57"	500.00'	66.03'	33.06'	65.98'	N73°34'55"E
C51	12°39'13"	500.00'	110.42'	55.44'	110.20'	N63°28'20"E
C52	32°51'17"	500.00'	286.71'	147.42'	282.80'	N73°34'21"E
C53	17°41'11"	550.00'	169.78'	85.57'	169.10'	N65°59'19"E

**LEGEND:**

- UNDISTURBED NATURAL OPEN SPACE EASEMENT AND CONSERVATION AREA
- EXISTING NATURAL OPEN SPACE EASEMENT AND CONSERVATION AREA

**BMP LINE TABLE**

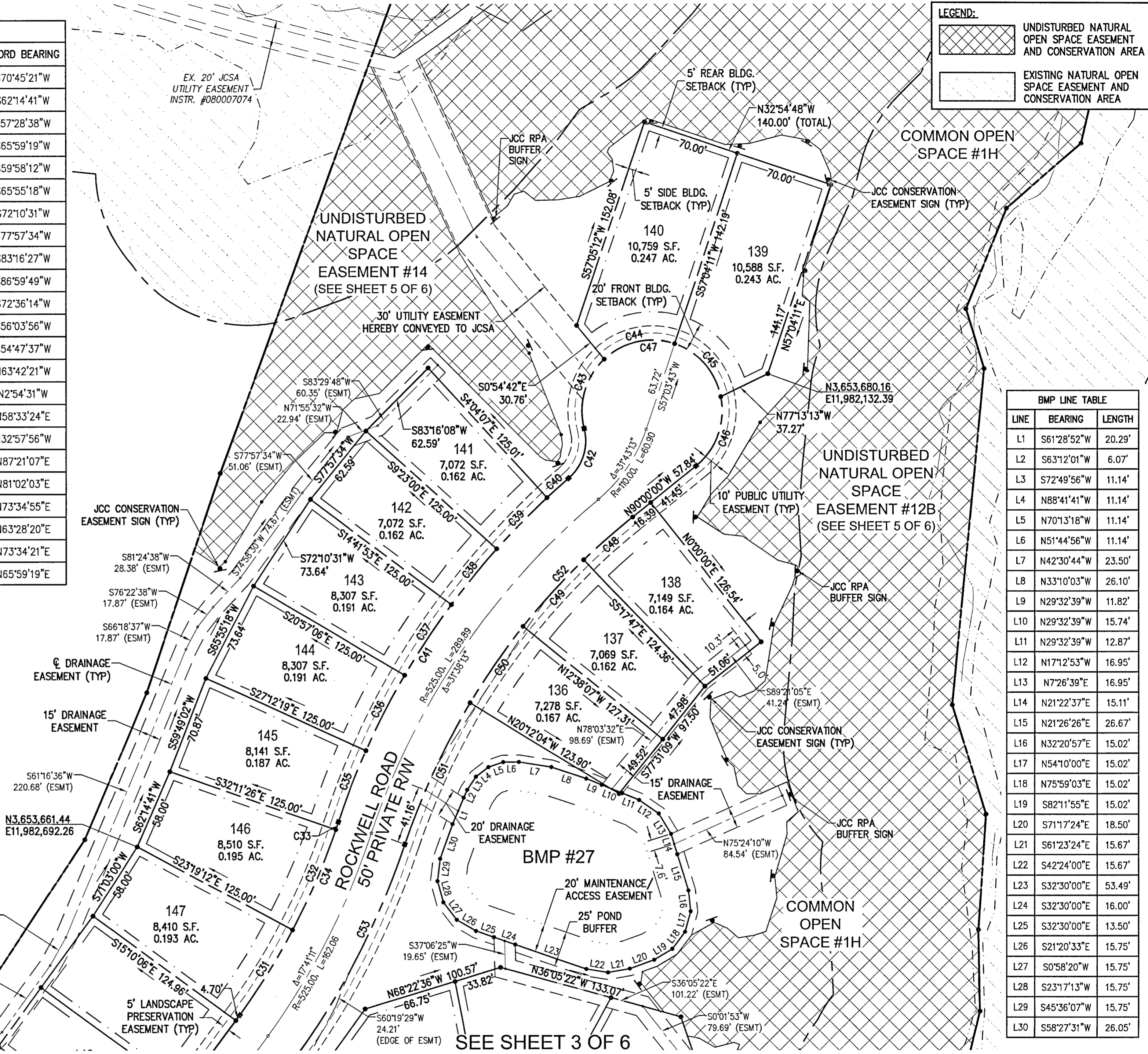
LINE	BEARING	LENGTH
L1	S61°28'52"W	20.29'
L2	S63°12'01"W	6.07'
L3	S72°49'56"W	11.14'
L4	N88°41'41"W	11.14'
L5	N70°13'18"W	11.14'
L6	N51°44'56"W	11.14'
L7	N42°30'44"W	23.50'
L8	N33°10'03"W	26.10'
L9	N29°32'39"W	11.82'
L10	N29°32'39"W	15.74'
L11	N29°32'39"W	12.87'
L12	N17°12'53"W	16.95'
L13	N7°26'39"E	16.95'
L14	N21°22'37"E	15.11'
L15	N21°26'26"E	26.67'
L16	N32°20'57"E	15.02'
L17	N54°10'00"E	15.02'
L18	N75°59'03"E	15.02'
L19	S82°11'55"E	15.02'
L20	S71°17'24"E	18.50'
L21	S61°23'24"E	15.67'
L22	S42°24'00"E	15.67'
L23	S32°30'00"E	53.49'
L24	S32°30'00"E	16.00'
L25	S32°30'00"E	13.50'
L26	S21°20'33"E	15.75'
L27	S0°58'20"W	15.75'
L28	S23°17'13"W	15.75'
L29	S45°36'07"W	15.75'
L30	S58°27'31"W	26.05'

**GRAPHIC SCALE**  
 50' 0' 50' 100'  
 SCALE: 1" = 50'

**JAMES CITY COUNTY**  
 GEODETIC CONTROL MERIDIAN

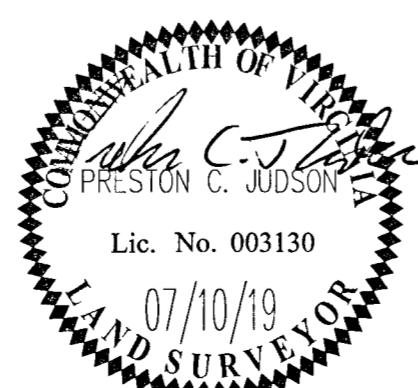
COLONIAL HERITAGE HOMEOWNERS ASSOCIATION INC.  
 C/O THE COLONIAL HERITAGE CLUB  
 TAX MAP PARCEL ID NO.: 2330500004  
 INSTR. #080011371  
 GOLF COURSE AREA 4

Large Small Plat(s) Recorded herewith as # 190016053



Rev.	Date	Description	RMS Revised By
1	07/10/19	REVISED PER JCC COMMENTS DATED 04/2019	RMS

City of Williamsburg & County of James City  
 Circuit Court: This PLAT was recorded on  
 November 1, 2019  
 at 11:16 AM/PM, PG  
 Document # 190016053  
 MONA A. FOLEY, CLERK



**AES**  
 CONSULTING ENGINEERS  
 5248 Olde Towne Road, Suite 1  
 Williamsburg, Virginia 23188  
 Phone: (757) 253-0040  
 Fax: (757) 220-8994  
 www.aesva.com

REF: JCC S-19-0023

PLAT OF SUBDIVISION  
 LOTS 123 THRU 156 AND COS #1H  
**COLONIAL HERITAGE  
 PHASE III - SECTION 2C**  
 OWNER / DEVELOPER: COLONIAL HERITAGE, LLC

STONEHOUSE DISTRICT | JAMES CITY COUNTY | VIRGINIA

Project Contacts: PCJ/TRS  
 Project Number: 8881-32C  
 Scale: 1"=50' Date: 03/12/19  
 Sheet Number  
**4 of 6**