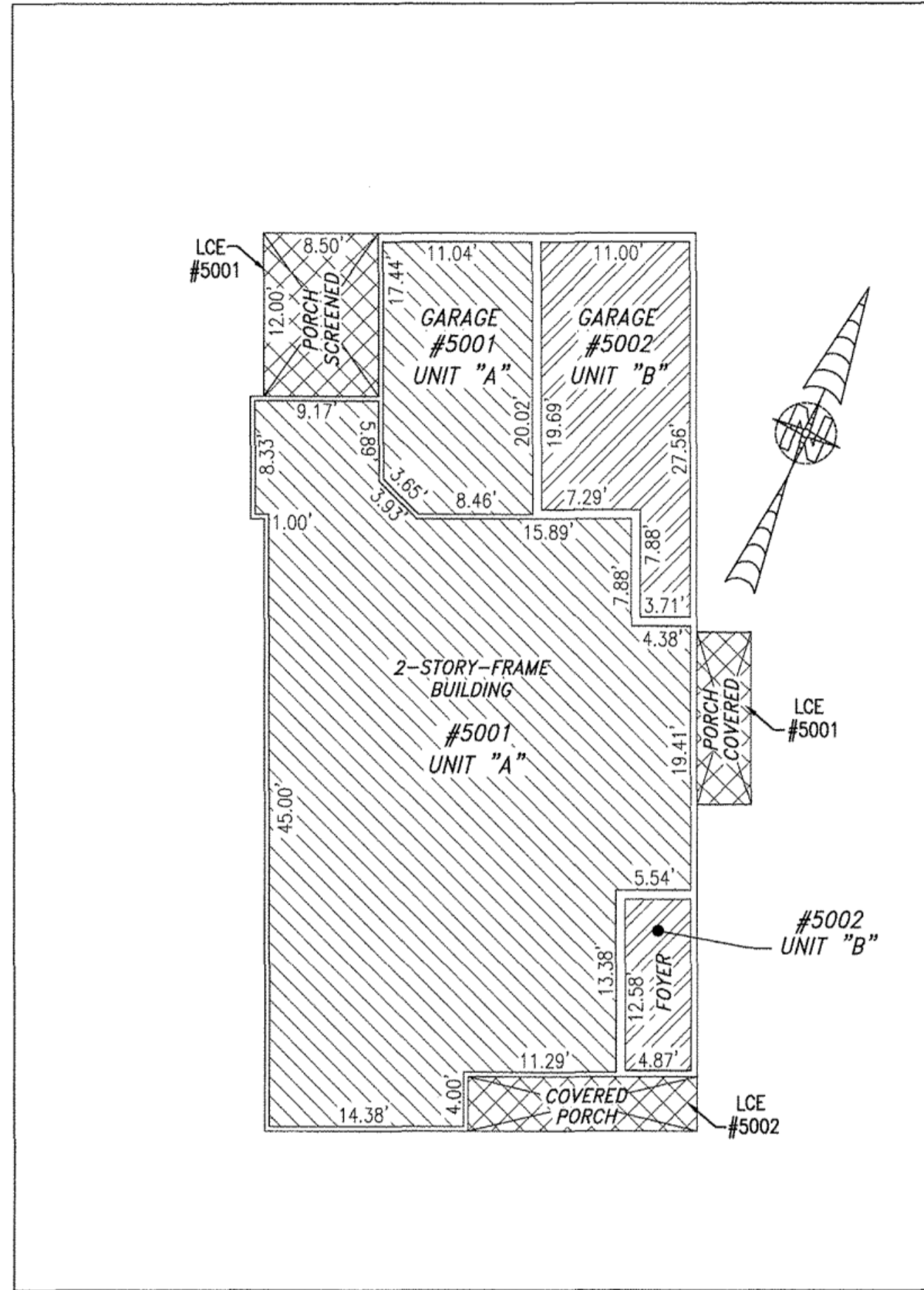
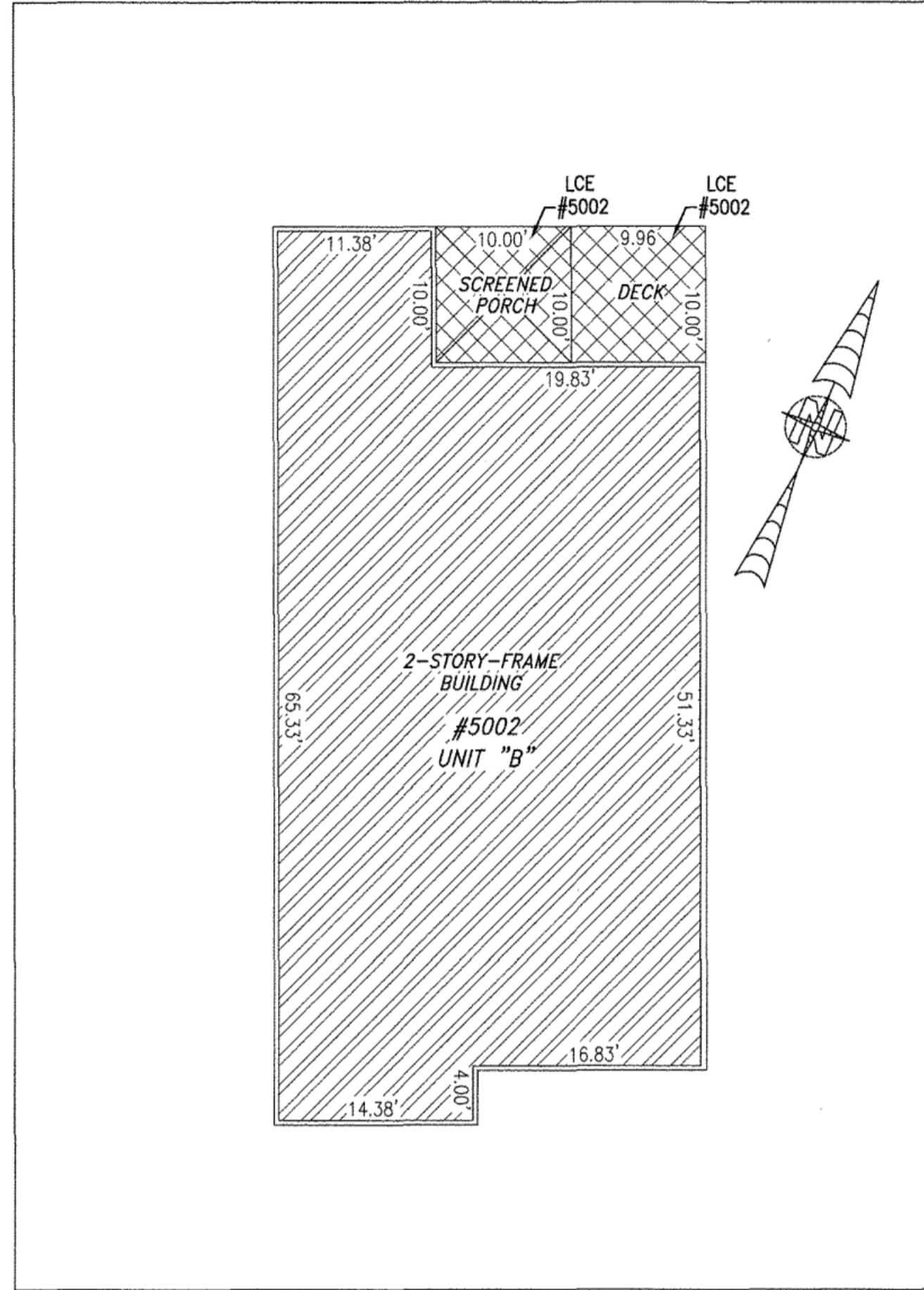


190013854

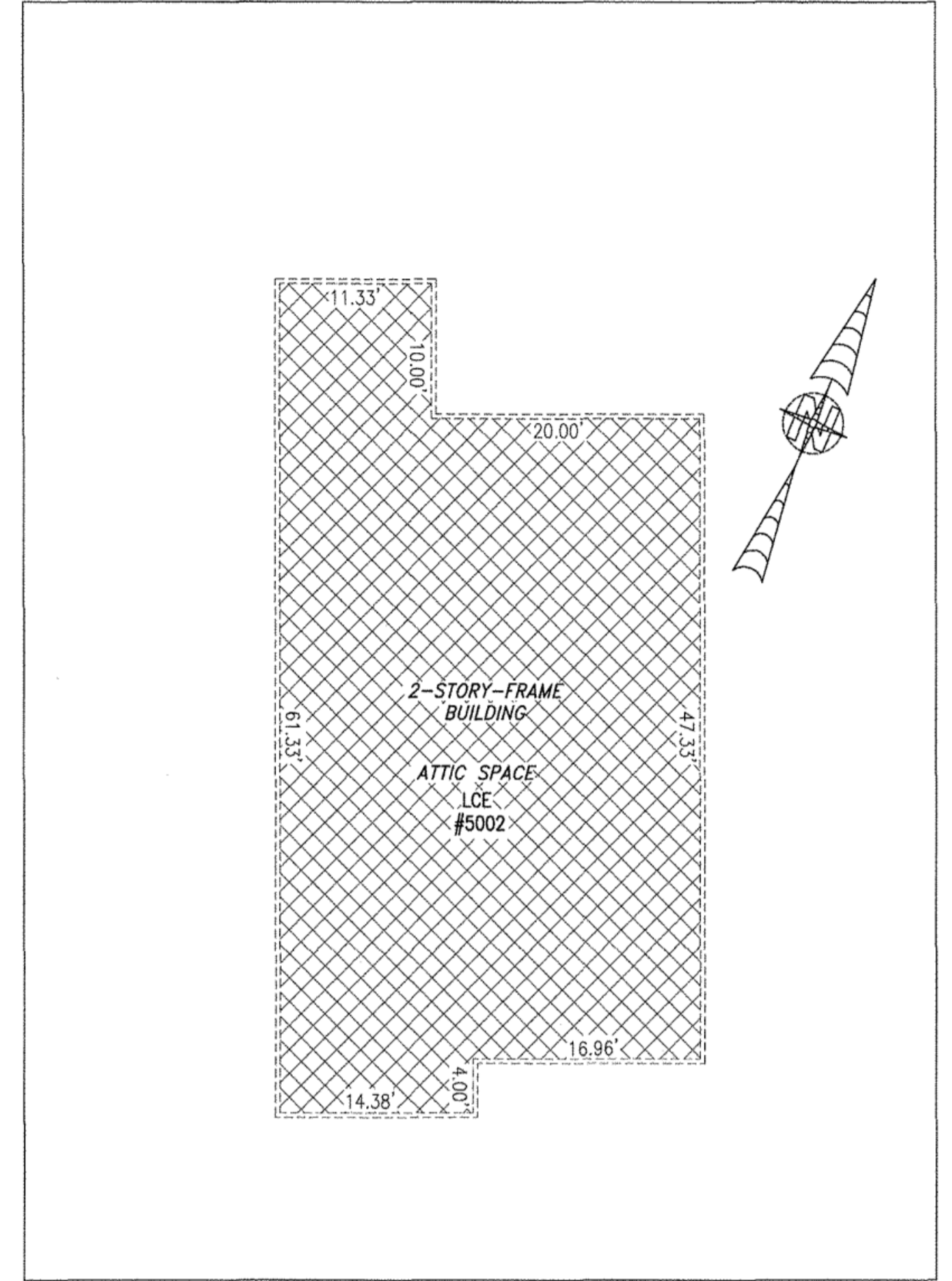
BUILDING 50 (DUPLEX)



FIRST FLOOR



SECOND FLOOR



THIRD FLOOR

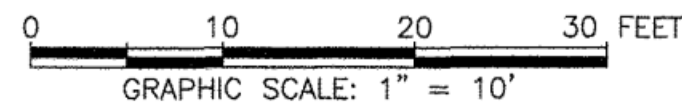
I HEREBY CERTIFY THAT THIS PLAN IS ACCURATE AND THAT IT COMPLIES WITH THE PROVISIONS OF THE CODE OF VIRGINIA OF 1950 AS AMENDED, § 55-79.58 AND I FURTHER CERTIFY THAT ALL UNITS THEREOF DEPICTED HEREON, PURSUANT TO THE CODE OF VIRGINIA § 55-79.58B, ARE SUBSTANTIALLY COMPLETE.

UNIT ID	UNIT DESCRIPTION	UNIT ADDRESS
A	-INDICATES AREA OF UNIT 5001	#5001 PROMENADE LANE
B	-INDICATES AREA OF UNIT 5002	#5002 PROMENADE LANE
	-INDICATES COMMON ELEMENT	
	-INDICATES LIMITED COMMON ELEMENT	

5 Large/Small Plat(s) Recorded
herewith as # 190013854

City of Williamsburg & County of James City
Circuit Court: This PLAT was recorded on
9-25-2019
at 1:50 AM/PM, PB - PG -
Document # 190013854
MONA A. FOLEY, CLERK

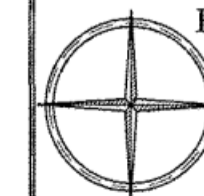
Mona A. Foley, Clerk



THIS SHEET: FLOOR PLANS

PHASE 50
CONDOMINIUM PLAT AND PLAN
OF
THE PROMENADE
AT
JOHN TYLER
A CONDOMINIUM
JAMES CITY COUNTY, VIRGINIA

Job# 160921



Hayden Frye and Associates, Inc.
Land Surveyors

333 KELLAM ROAD, SUITE 200
VIRGINIA BEACH, VA., 23462
PH: (757) 491-7228 FX: (757) 491-7229

DATE: SEPTEMBER 6, 2019

SCALE: 1"=10'

SHEET 5 OF 5 THIS PHASE