

190013632

SURVEYORS CERTIFICATE

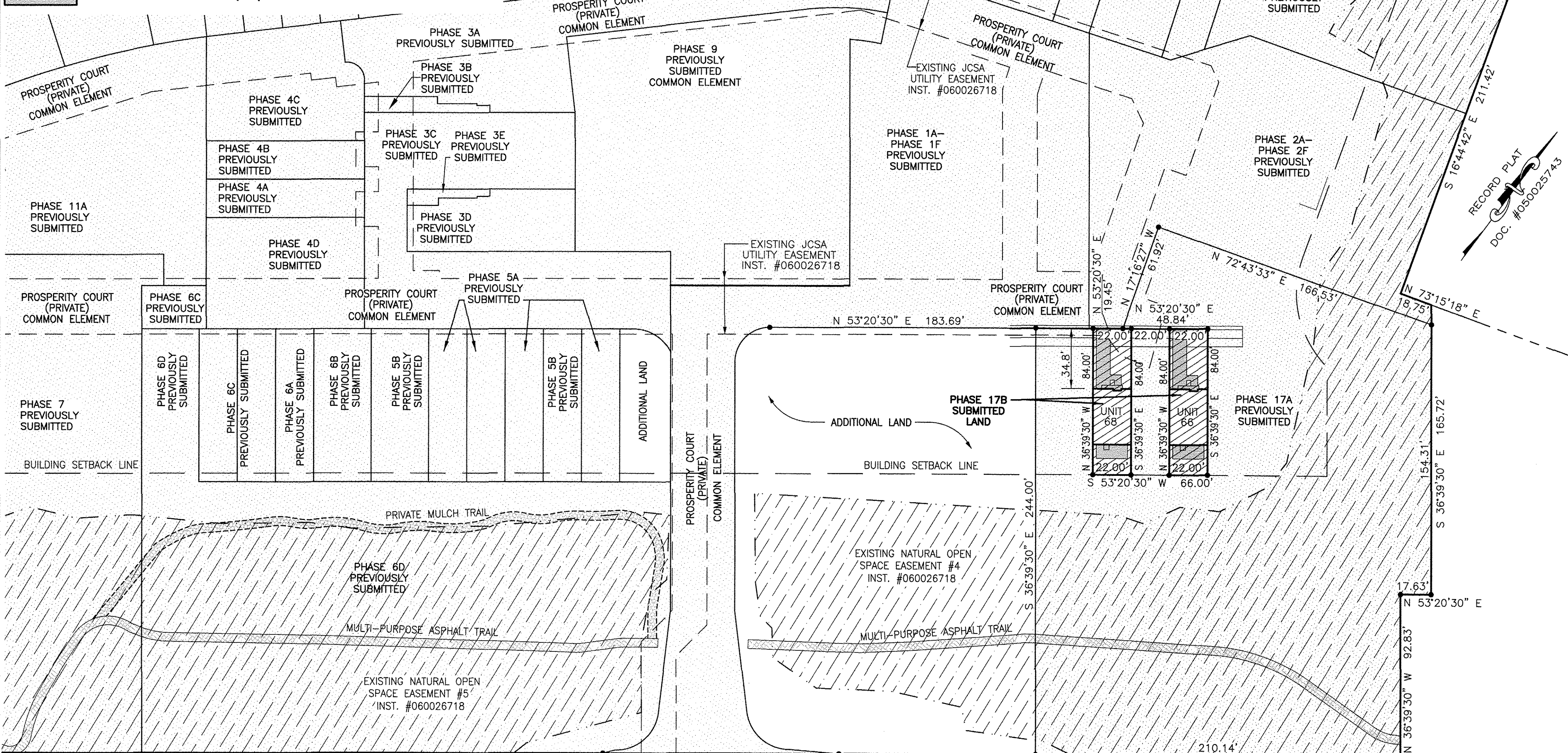
I HEREBY CERTIFY THAT THE PLAN PREVIOUSLY RECORDED FOR GOVERNOR'S GROVE AT FIVE FORKS, A CONDOMINIUM AT INSTRUMENT NO. 160009184 ACCURATELY DEPICTS THE UNIT AND RELATED IMPROVEMENTS SHOWN AND THAT THEY COMPLY WITH THE CODE OF VIRGINIA OF 1950, AS AMENDED §55-79.58(B) AND ARE SUBSTANTIALLY COMPLETE.

I HEREBY CERTIFY THAT THIS PLAT IS ACCURATE AND THAT IT COMPLIES WITH THE CODE OF VIRGINIA OF 1950, AS AMENDED, §55-79.58, AND I FURTHER CERTIFY THAT ALL IMPROVEMENTS OR PORTIONS THEREOF DEPICTED HEREON, PURSUANT TO THE CODE OF VIRGINIA, §55-79.58(A), ARE SUBSTANTIALLY COMPLETE.

William S. Felts
WILLIAM S. FELTS LIC. #3149 09/10/2019 DATE



- INDICATES ADDITIONAL LAND
- INDICATES PREVIOUSLY SUBMITTED LAND
- SUBMITTED LAND
- LIMITED COMMON ELEMENT (LCE)



PLAT OF
PHASE 17B
GOVERNOR'S GROVE AT FIVE FORKS
A CONDOMINIUM
LOCATED IN THE BERKELEY DISTRICT
JAMES CITY COUNTY, VIRGINIA

SCALE: 1" = 40'
DATE: 09/10/2019 SHEET: 2 OF 2 JOB# 06-460



3925 Midlands Road, Williamsburg, VA 23188
Phone: (757) 565-1677 Fax: (757) 565-0782
web: landtechresources.com



2 Large/Small Plat(s) Recorded
herewith as # 190013632

City of Williamsburg & County of James City
Circuit Court: This PLAT was recorded on
Sept. 20, 2019
at 3:18 AM/PM PB PG -
Document # 190013632
MONA A. FOLEY, CLERK
Mona A. Foley, Clerk

JOHN TYLER HIGHWAY
STATE ROUTE #5
(VARIABLE WIDTH PUBLIC R/W)

JCC Subdivision Agent Approval Not Required
Scale: 1" = 40'