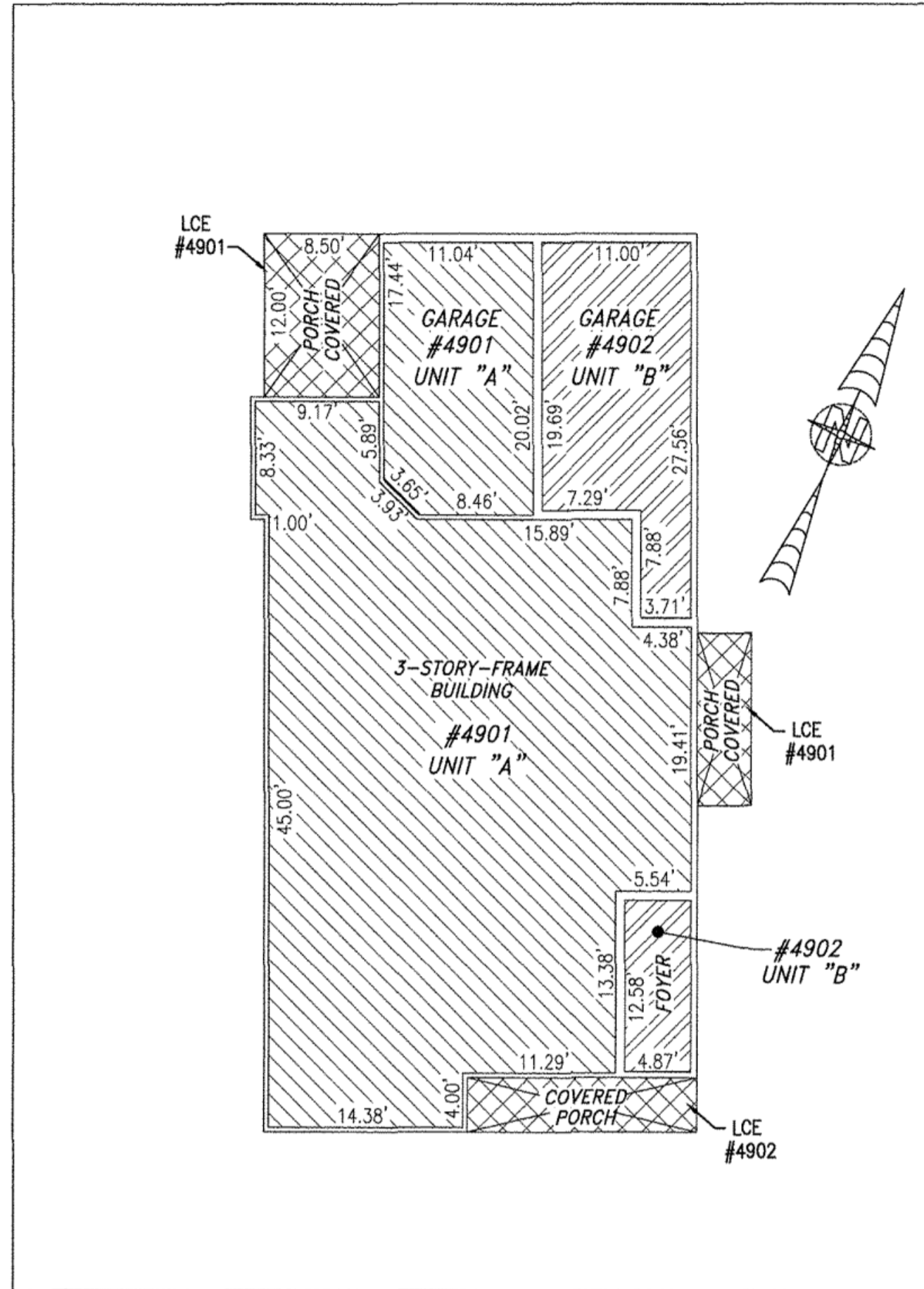
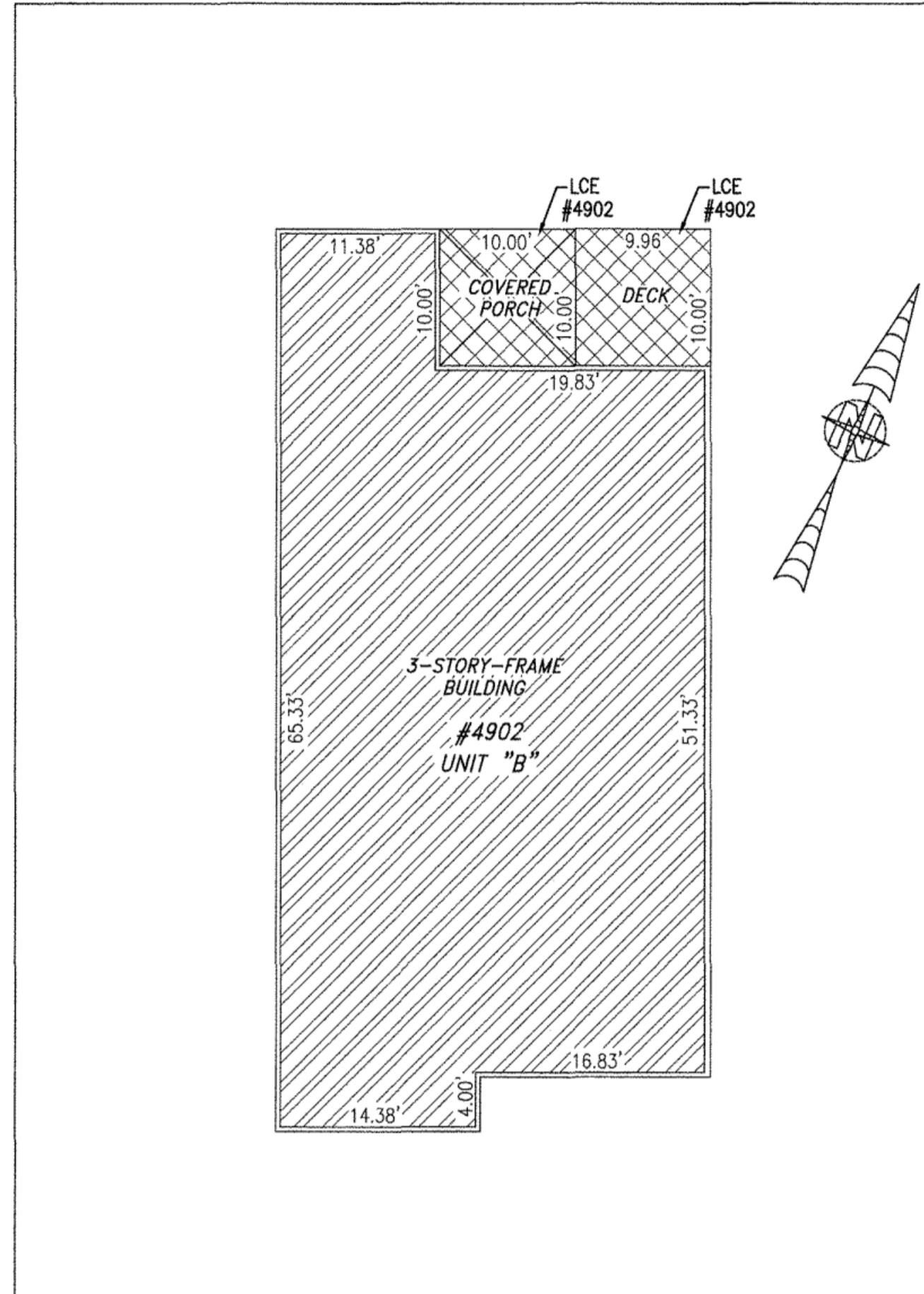


190011650

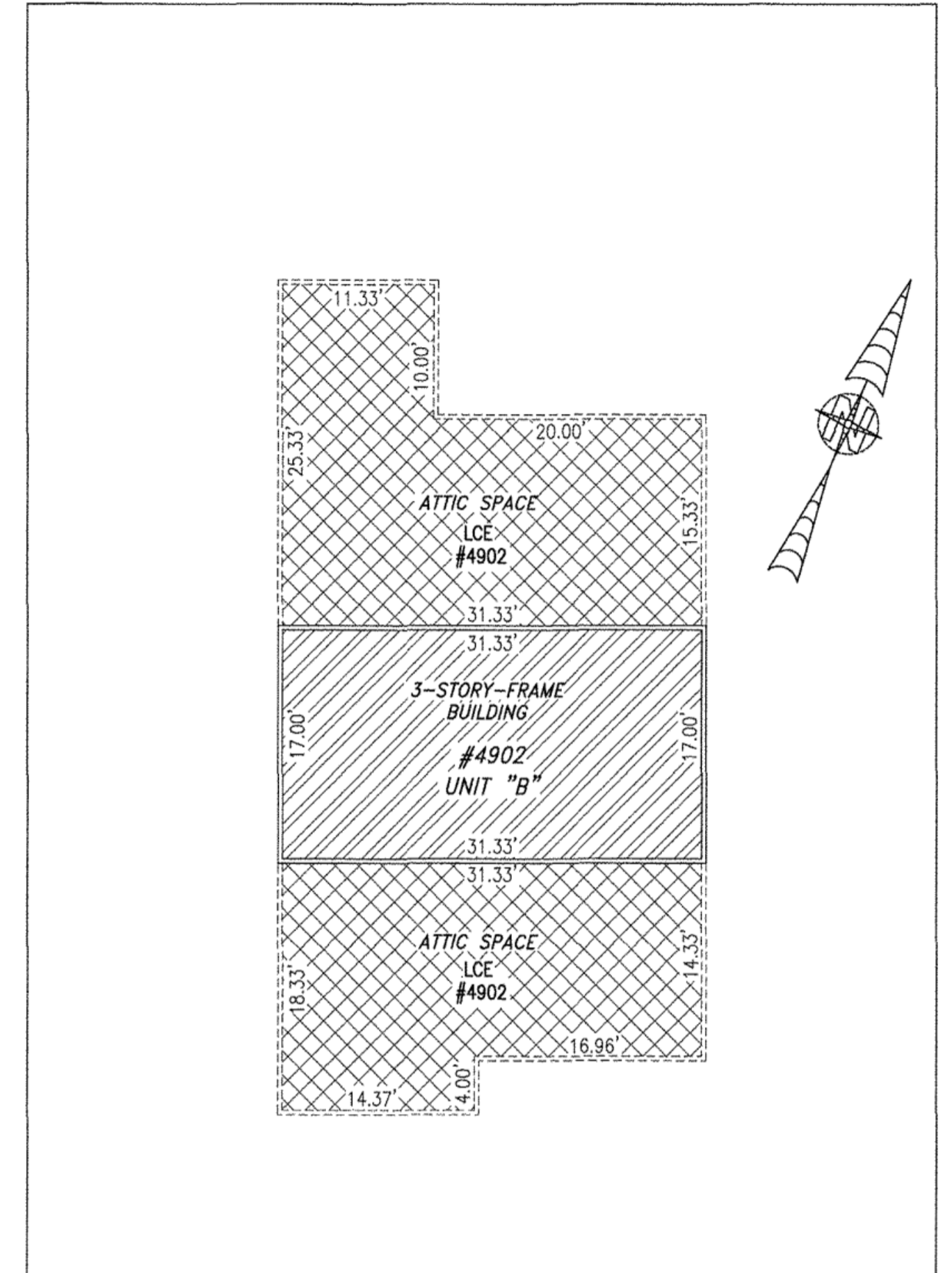
BUILDING 49 (DUPLEX)



FIRST FLOOR



SECOND FLOOR



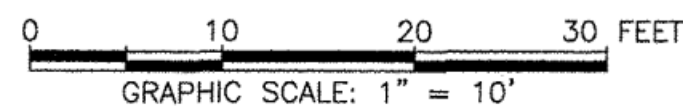
THIRD FLOOR

UNIT ID	UNIT DESCRIPTION	UNIT ADDRESS
A	-INDICATES AREA OF UNIT 4901	#4901 PROMENADE LANE
B	-INDICATES AREA OF UNIT 4902	#4902 PROMENADE LANE
	-INDICATES COMMON ELEMENT	
	-INDICATES LIMITED COMMON ELEMENT	

5 Large/Small Plat(s) Recorded
herewith as # 190011650

I HEREBY CERTIFY THAT THIS PLAN IS ACCURATE AND THAT IT COMPLIES WITH THE PROVISIONS OF THE CODE OF VIRGINIA OF 1950 AS AMENDED, § 55-79.58 AND I FURTHER CERTIFY THAT ALL UNITS THEREOF DEPICTED HEREON, PURSUANT TO THE CODE OF VIRGINIA § 55-79.58B, ARE SUBSTANTIALLY COMPLETE.

City of Williamsburg & County of James City
Circuit Court: This PLAT was recorded on
August 13, 2019
at 2:33 AM/PM PB PG -
Document # 190011650
MONA A. FOLEY, CLERK
Mona A. Foley, Clerk



JCC Subdivision Agent
Approval Not Required *ELL*

THIS SHEET: FLOOR PLANS

PHASE 49
CONDOMINIUM PLAT AND PLAN
OF
THE PROMENADE
AT
JOHN TYLER
A CONDOMINIUM
JAMES CITY COUNTY, VIRGINIA

Jo# 160921



Hayden Frye and Associates, Inc.
Land Surveyors
333 KELLAM ROAD, SUITE 200
VIRGINIA BEACH, VA., 23462
PH: (757) 491-7228 FX:(757) 491-7229

DATE: MAY 17, 2019

SCALE: 1"=10'

SHEET 5 OF 5 THIS PHASE