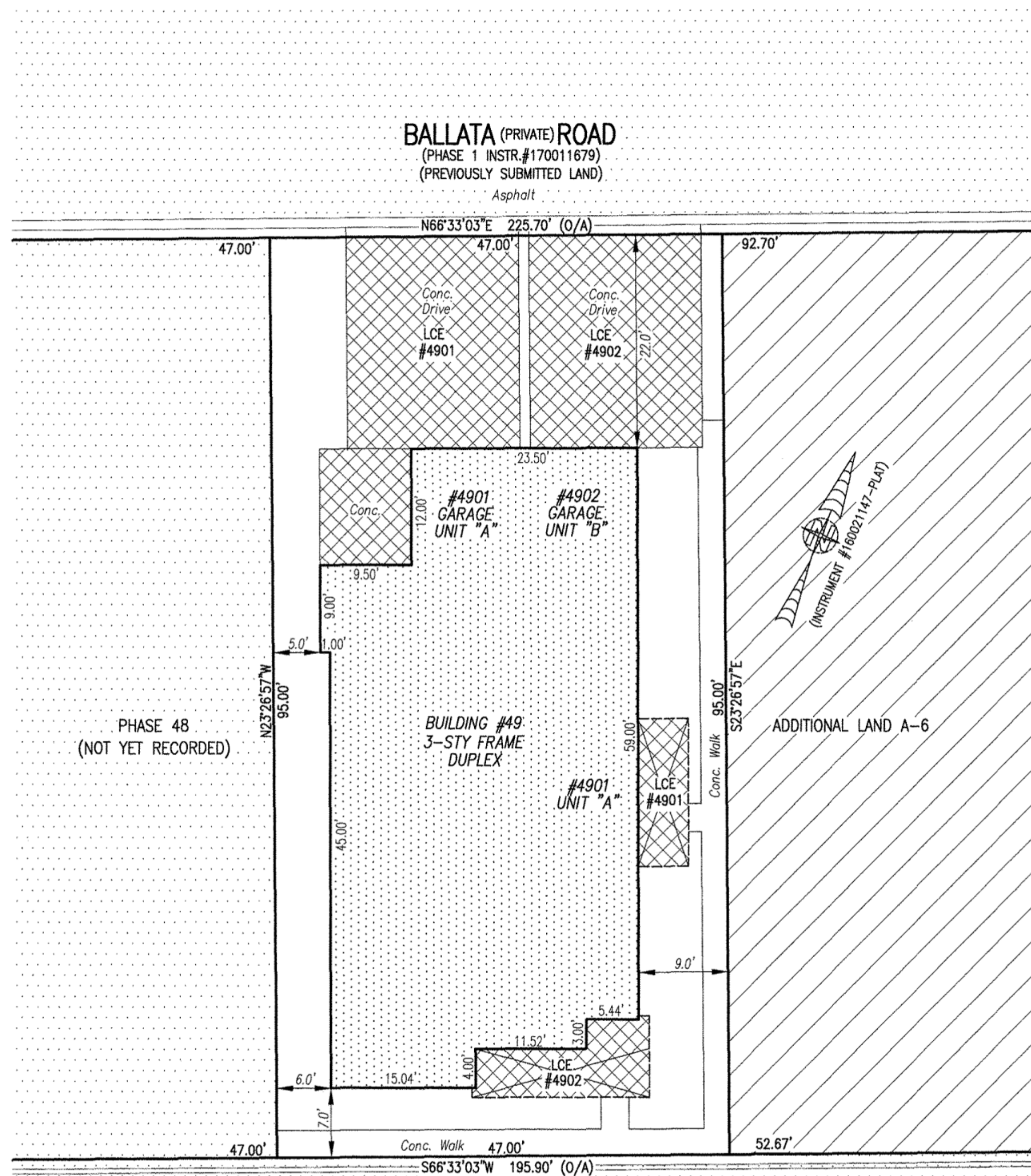


190011650

I HEREBY CERTIFY THAT THIS PLAT IS ACCURATE AND THAT IT COMPLIES WITH THE PROVISIONS OF THE CODE OF VIRGINIA OF 1950 AS AMENDED, § 55-79.58 AND I FURTHER CERTIFY THAT ALL IMPROVEMENTS THEREOF DEPICTED HEREON, PURSUANT TO THE CODE OF VIRGINIA § 55-79.58A, ARE SUBSTANTIALLY COMPLETE.



- INDICATES PREVIOUSLY SUBMITTED LAND
- INDICATES BUILDING AREA (SEE PLANS FOR UNIT DIMENSIONS)
- INDICATES LIMITED COMMON ELEMENT (LCE) ASSIGNED TO A UNIT # UNIT ASSIGNED
- INDICATES COMMON ELEMENT (EXCLUDING AREAS OUTSIDE SUBMITTED LAND)
- INDICATES ADDITIONAL LAND

5 Large/Small Plat(s) Recorded
herewith as # 190011650

City of Williamsburg & County of James City
Circuit Court: This PLAT was recorded on
August 13, 2019
at 2:33 AM PM PB PG
Document # 190011650
MONA A. FOLEY, CLERK
Mona A. Foley, Clerk

THIS SHEET: BUILDING DETAIL

PHASE 49
CONDOMINIUM PLAT AND PLAN
OF
THE PROMENADE
AT
JOHN TYLER
A CONDOMINIUM
JAMES CITY COUNTY, VIRGINIA

Jo# 160921



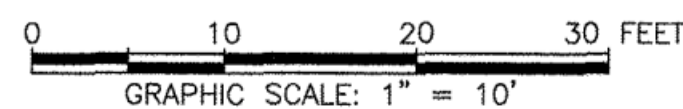
Hayden Frye and Associates, Inc.
Land Surveyors

333 KELLAM ROAD, SUITE 200
VIRGINIA BEACH, VA., 23462
PH: (757) 491-7228 FX: (757) 491-7229

DATE: MAY 17, 2019

SCALE: 1"=10'

SHEET 3 OF 5 THIS PHASE



JCC Subdivision Agent
Approval Not Required *ELL*