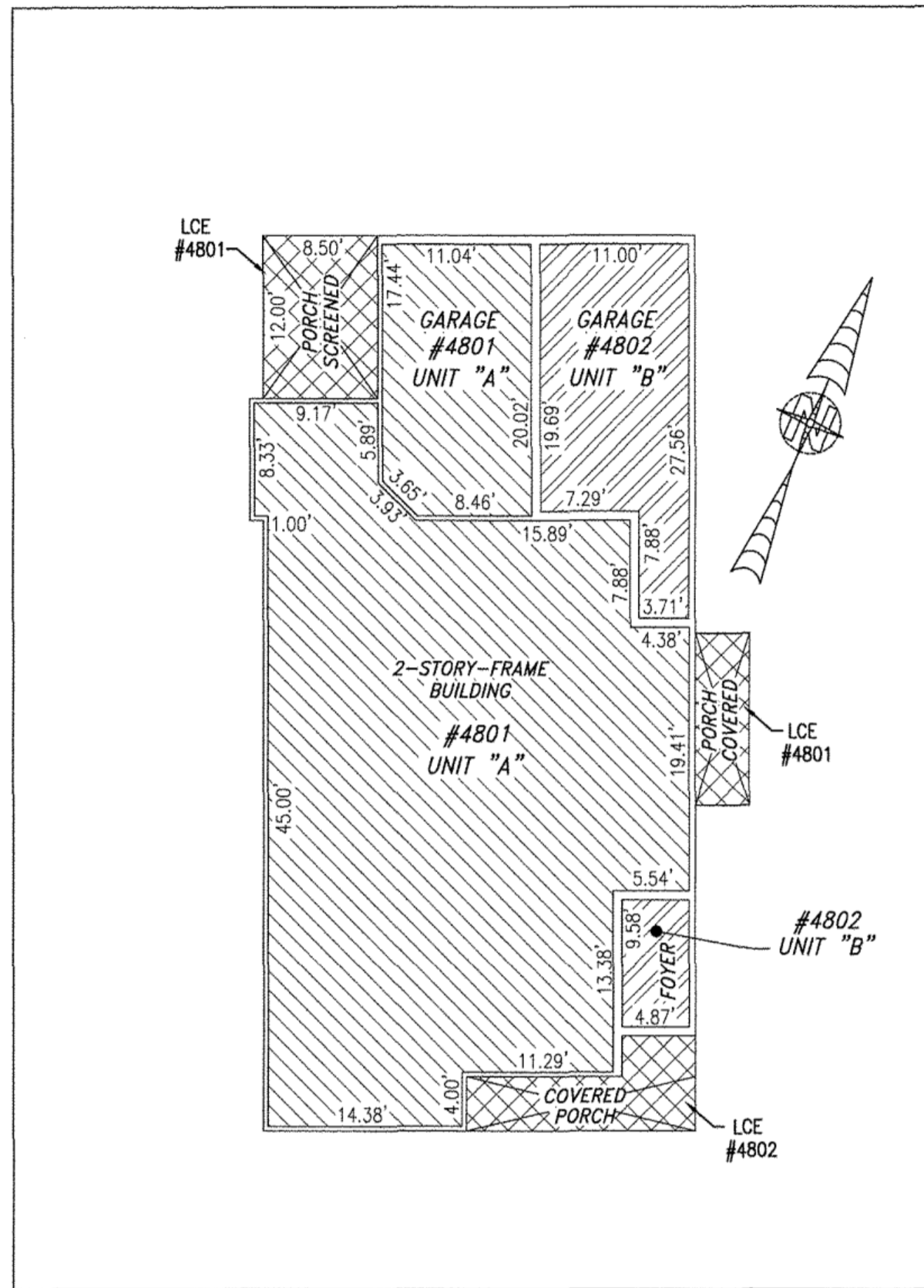
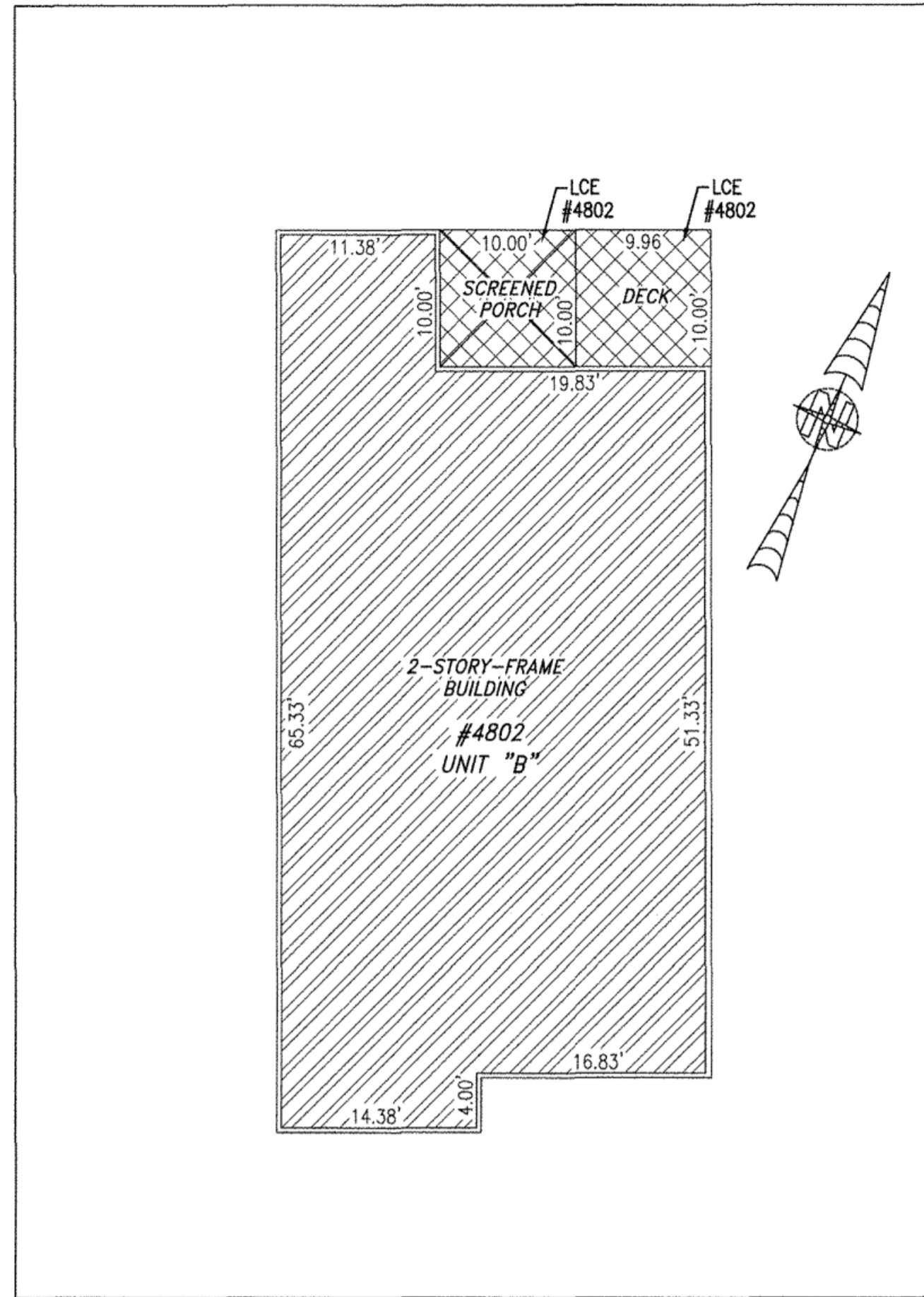


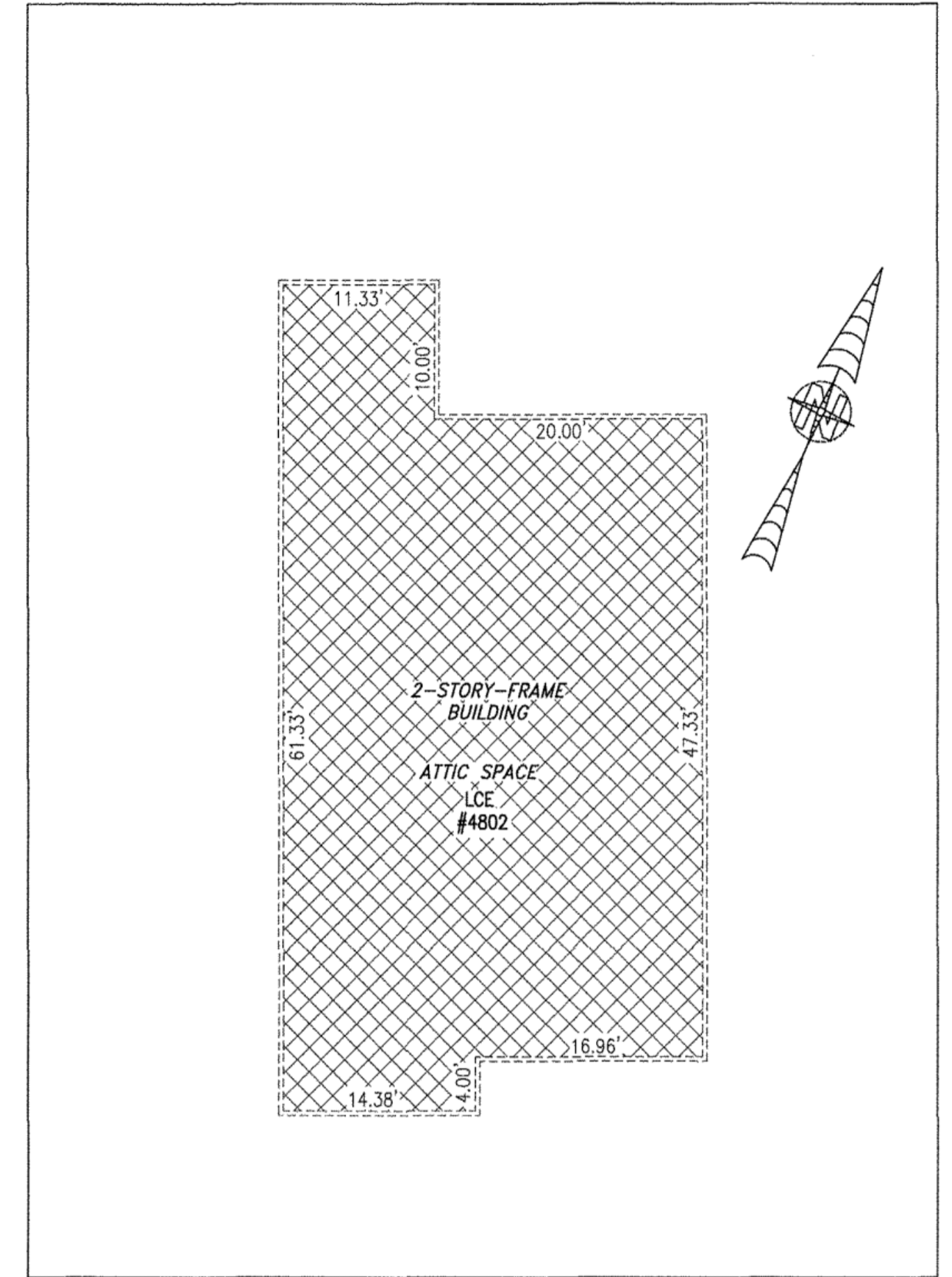
BUILDING 48 (DUPLEX)



FIRST FLOOR



SECOND FLOOR



THIRD FLOOR

I HEREBY CERTIFY THAT THIS PLAN IS ACCURATE AND THAT IT COMPLIES WITH THE PROVISIONS OF THE CODE OF VIRGINIA OF 1950 AS AMENDED, § 55-79.58 AND I FURTHER CERTIFY THAT ALL UNITS THEREOF DEPICTED HEREON, PURSUANT TO THE CODE OF VIRGINIA § 55-79.58B, ARE SUBSTANTIALLY COMPLETE.

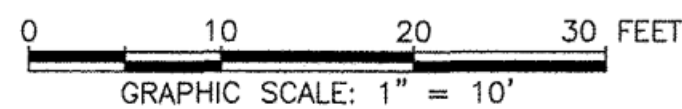


5 Large/Small Plat(s) Recorded
herewith as # 190010971

UNIT ID	UNIT DESCRIPTION	UNIT ADDRESS
A	-INDICATES AREA OF UNIT 4801	#4801 PROMENADE LANE
B	-INDICATES AREA OF UNIT 4802	#4802 PROMENADE LANE
	-INDICATES COMMON ELEMENT	
	-INDICATES LIMITED COMMON ELEMENT	

City of Williamsburg & County of James City
Circuit Court: This PLAT was recorded on
July 31, 2019

at 9:45 AM/PM, PG
Document # 190010971
MONA A. FOLEY, CLERK
Mona A. Foley, Clerk

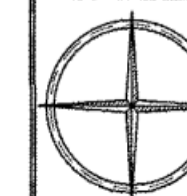


JCC Subdivision Agent *et al*
Approval Not Required

THIS SHEET: FLOOR PLANS

PHASE 48
CONDOMINIUM PLAT AND PLAN
OF
THE PROMENADE
AT
JOHN TYLER
A CONDOMINIUM
JAMES CITY COUNTY, VIRGINIA

Jo# 160921



Hayden Frye and Associates, Inc.
Land Surveyors
333 KELLAM ROAD, SUITE 200
VIRGINIA BEACH, VA., 23462
PH: (757) 491-7228 FX: (757) 491-7229

DATE: MAY 16, 2019
SCALE: 1"=10'
SHEET 5 OF 5 THIS PHASE