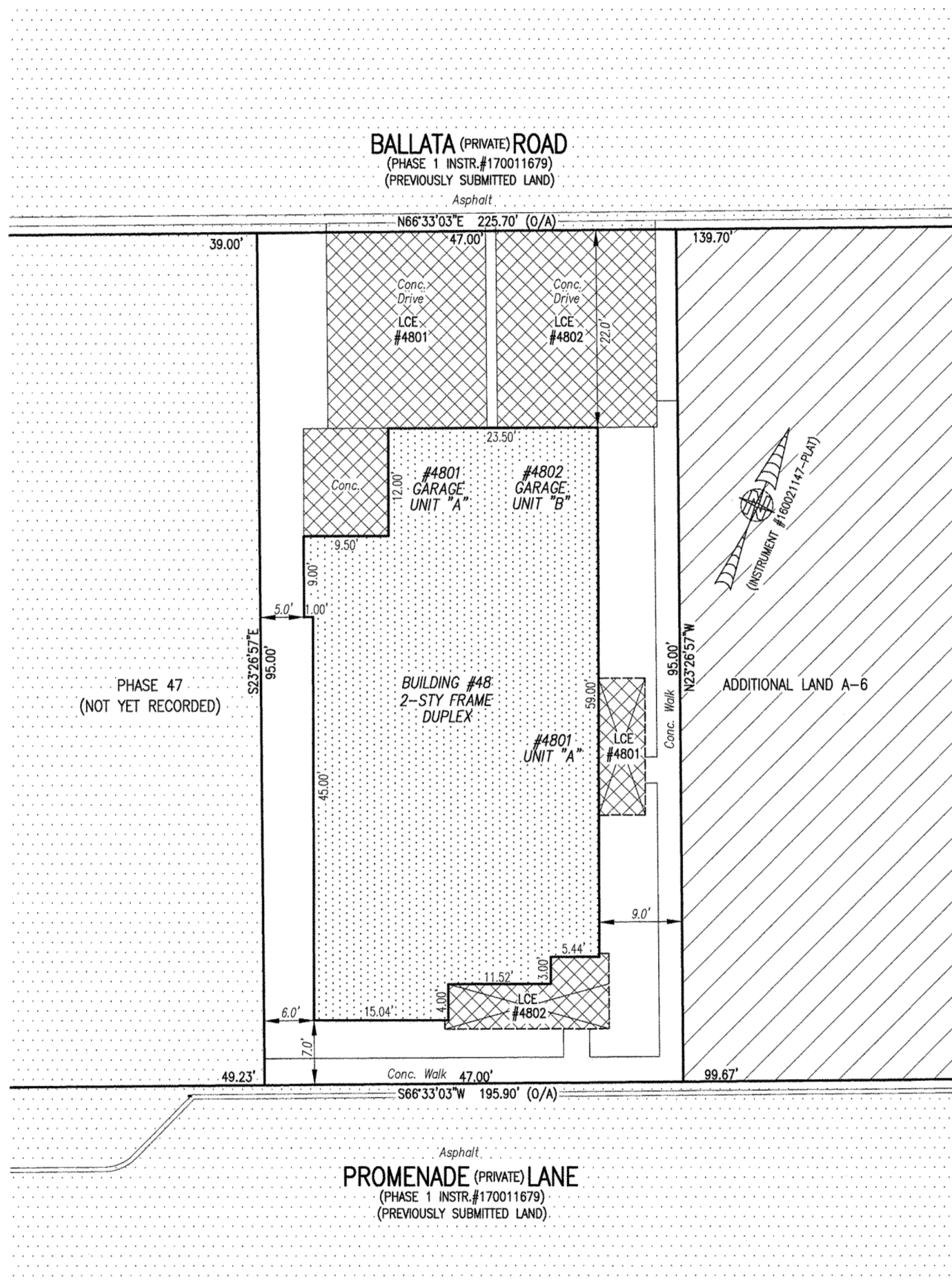


190010971

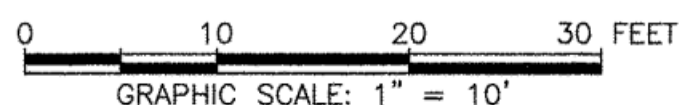
I HEREBY CERTIFY THAT THIS PLAT IS ACCURATE AND THAT IT COMPLIES WITH THE PROVISIONS OF THE CODE OF VIRGINIA OF 1950 AS AMENDED, § 55-79.58 AND I FURTHER CERTIFY THAT ALL IMPROVEMENTS THEREOF DEPICTED HEREON, PURSUANT TO THE CODE OF VIRGINIA § 55-79.58A, ARE SUBSTANTIALLY COMPLETE.



- INDICATES PREVIOUSLY SUBMITTED LAND
- INDICATES BUILDING AREA (SEE PLANS FOR UNIT DIMENSIONS)
- INDICATES LIMITED COMMON ELEMENT (LCE) ASSIGNED TO A UNIT # UNIT ASSIGNED
- INDICATES COMMON ELEMENT (EXCLUDING AREAS OUTSIDE SUBMITTED LAND)
- INDICATES ADDITIONAL LAND

5 Large/Small Plat(s) Recorded herewith as # 190010971

City of Williamsburg & County of James City
Circuit Court: This PLAT was recorded on July 31, 2019
at 9:45 AM/PM, PB PG -
Document # 190010971
MONA A. FOLEY, CLERK
Mona A. Foley, Clerk



JCC Subdivision Agent Approval Not Required E62

THIS SHEET: BUILDING DETAIL

PHASE 48
CONDOMINIUM PLAT AND PLAN
OF
THE PROMENADE
AT
JOHN TYLER
A CONDOMINIUM
JAMES CITY COUNTY, VIRGINIA

Hayden Frye and Associates, Inc.
Land Surveyors
333 KELLAM ROAD, SUITE 200
VIRGINIA BEACH, VA., 23462
PH: (757) 491-7228 FX: (757) 491-7229

DATE: MAY 16, 2019
SCALE: 1"=10'
SHEET 3 OF 5 THIS PHASE

