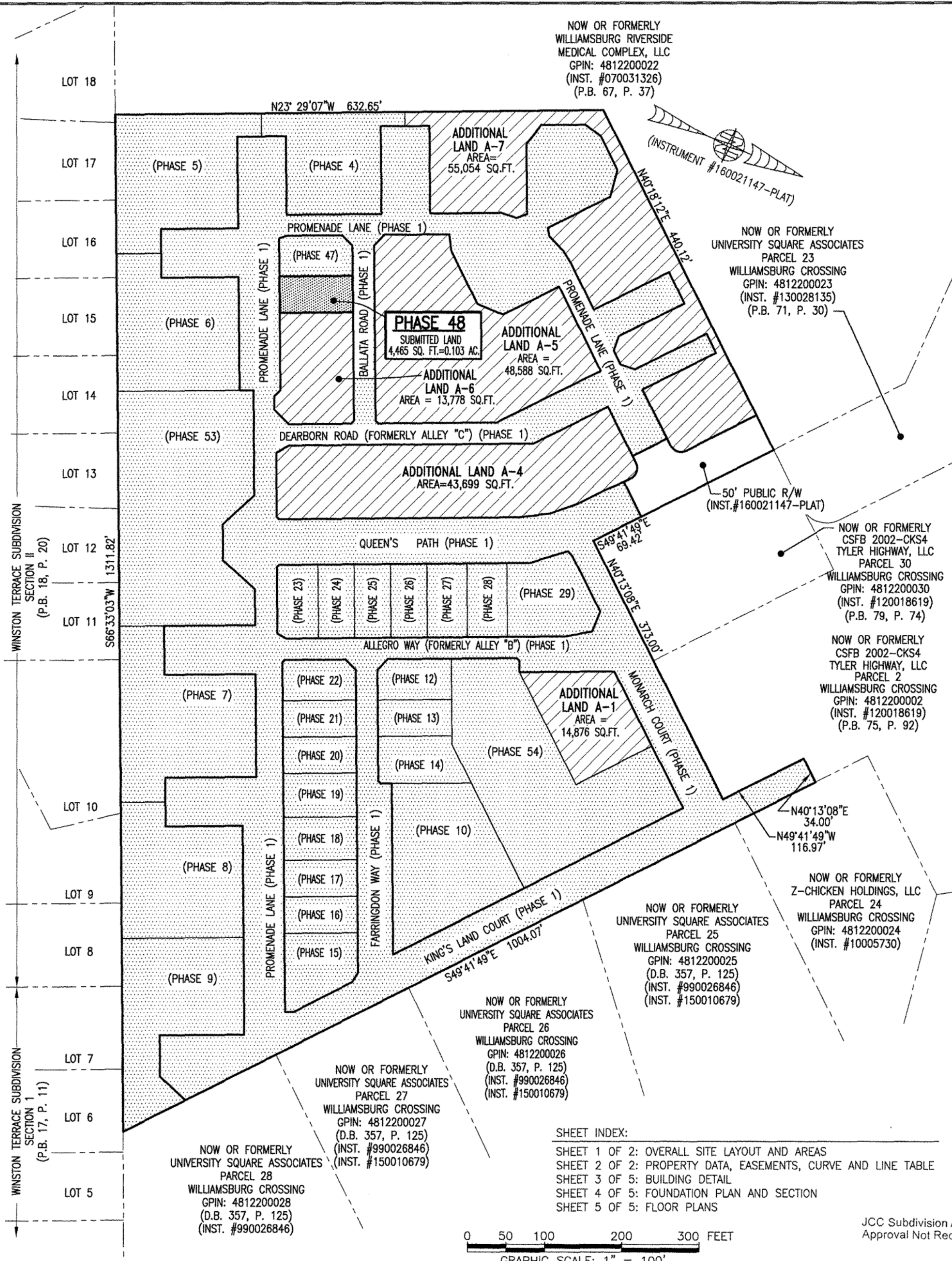
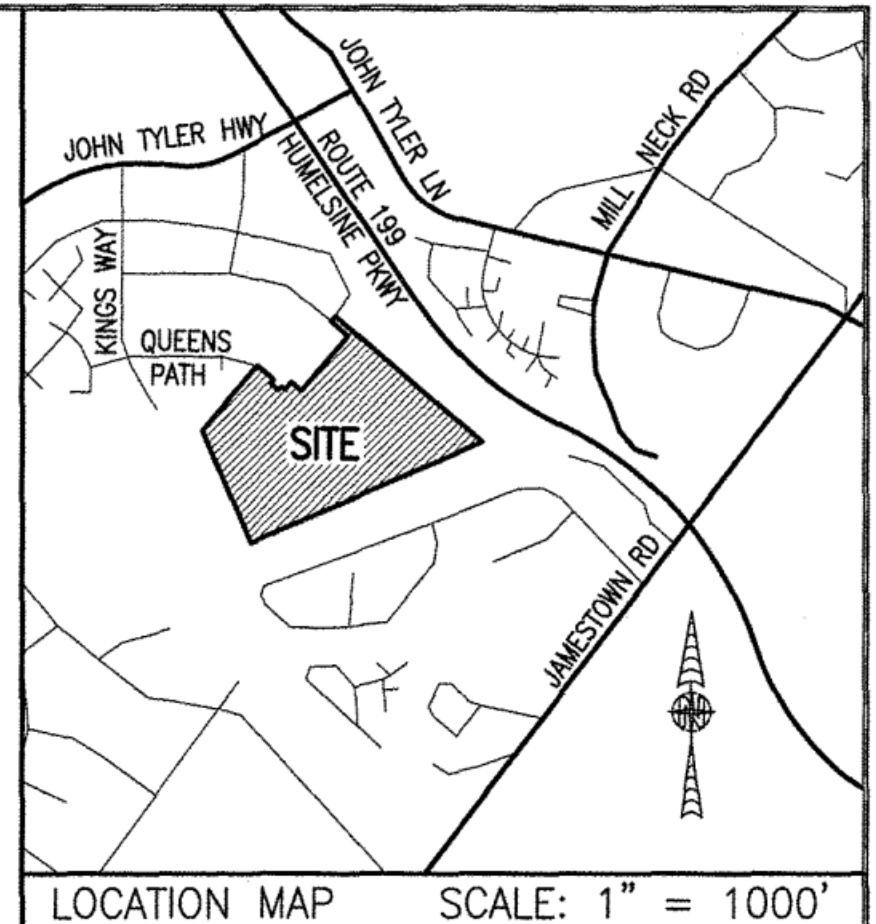


190010971

I HEREBY CERTIFY THAT THIS PLAT IS ACCURATE AND THAT IT COMPLIES WITH THE PROVISIONS OF THE CODE OF VIRGINIA OF 1950 AS AMENDED, § 55-79.58 AND I FURTHER CERTIFY THAT ALL IMPROVEMENTS THEREOF DEPICTED HEREON, PURSUANT TO THE CODE OF VIRGINIA § 55-79.58A, ARE SUBSTANTIALLY COMPLETE.



AREA TABLE				
PHASE	BLDG#	STATUS/RECORDATION	SQUARE FEET	ACRES
1	N/A	INSTR.#170011679	268,468	6.163
4	4	INSTR.#190007409	17,652	0.405
5	5	INSTR.#190001499	26,166	0.601
6	6	INSTR.#180018358	24,875	0.571
7	7	INSTR.#180014663	28,822	0.662
8	8	INSTR.#180010369	24,539	0.563
9	9	INSTR.#180003694	25,978	0.596
10	10	INSTR.#170023466	25,806	0.592
12	12	INSTR.#180016847	4,949	0.114
13	13	INSTR.#180010007	4,512	0.104
14	14	INSTR.#180009579	6,462	0.148
15	15	INSTR.#190001143	7,841	0.180
16	16	INSTR.#190001141	4,467	0.103
17	17	INSTR.#190001140	4,467	0.103
18	18	INSTR.#180019704	5,273	0.121
19	19	INSTR.#180019705	5,367	0.123
20	20	INSTR.#180016210	4,465	0.103
21	21	INSTR.#180016209	4,465	0.103
22	22	INSTR.#180016208	4,892	0.112
23	23	INSTR.#180001768	5,014	0.115
24	24	INSTR.#180005480	4,464	0.102
25	25	INSTR.#180001779	4,466	0.103
26	26	INSTR.#170021156	4,465	0.102
27	27	INSTR.#170021157	4,944	0.114
28	28	INSTR.#180001781	4,936	0.113
29	29	NOT YET RECORDED	10,569	0.243
47	47	NOT YET RECORDED	4,879	0.112
48	48	SUBSTANTIALLY COMPLETE	4,465	0.103
53	N/A	INSTR.#180014662	49,886	1.145
54	N/A	INSTR.#190007408	43,080	0.989
ADDITIONAL LAND A-1			14,876	0.341
ADDITIONAL LAND A-4			43,699	1.003
ADDITIONAL LAND A-5			48,588	1.115
ADDITIONAL LAND A-6			13,778	0.316
ADDITIONAL LAND A-7			55,054	1.264
TOTAL: NEW PARCEL 29			816,629	18.747

LEGAL DESCRIPTION

PROPERTY SHOWN HEREON BEING "NEW PARCEL 29" CONTAINING 18.747 ACRES AS SHOWN ON "PLAT OF LOT LINE EXTINGUISHMENT BEING PARCELS 20 AND 29 OF WILLIAMSBURG CROSSING" PREPARED BY AES CONSULTING ENGINEERS, DATED 10-24-16 AND RECORDED AS INSTRUMENT NO. 160021147.

NOTES:

1. PHASE 48 BUILDING 48 IS SUBSTANTIALLY COMPLETE.
2. EASEMENTS AND BUILDING LINES SHOWN HEREON PER THE FOLLOWING:
 - ALTA SURVEY BY AES CONSULTING ENGINEERS, DATED 3-23-15
 - PLAT BY AES CONSULTING ENGINEERS, DATED 10-24-16, INST.#160021147
 - PLAN OF DEVELOPMENT BY AES CONSULTING ENGINEERS, DATED 9-8-16

5 Large/Small Plat(s) Recorded herewith as # 190010971

City of Williamsburg & County of James City Circuit Court: This PLAT was recorded on July 31, 2019 at 9:45 AM/PM, PB PG Document # 190010971 MONA A. FOLEY, CLERK

THIS SHEET: OVERALL SITE LAYOUT AND AREAS

PHASE 48
CONDOMINIUM PLAT AND PLAN
 OF
THE PROMENADE
 AT
JOHN TYLER
 A CONDOMINIUM
 JAMES CITY COUNTY, VIRGINIA

Jo# 160921



Hayden Frye and Associates, Inc.
Land Surveyors
 333 KELLAM ROAD, SUITE 200
 VIRGINIA BEACH, VA., 23462
 PH: (757) 491-7228 FX:(757) 491-7229

DATE: MAY 16, 2019
 SCALE: 1"=100'
 SHEET 1 OF 5 THIS PHASE

NOW OR FORMERLY WILLIAMSBURG RIVERSIDE MEDICAL COMPLEX, LLC
 GPIN: 4812200022
 (INST. #070031326)
 (P.B. 67, P. 37)

NOW OR FORMERLY UNIVERSITY SQUARE ASSOCIATES PARCEL 23
 WILLIAMSBURG CROSSING
 GPIN: 4812200023
 (INST. #130028135)
 (P.B. 71, P. 30)

NOW OR FORMERLY CSFB 2002-CKS4 TYLER HIGHWAY, LLC PARCEL 30
 WILLIAMSBURG CROSSING
 GPIN: 4812200030
 (INST. #120018619)
 (P.B. 79, P. 74)

NOW OR FORMERLY CSFB 2002-CKS4 TYLER HIGHWAY, LLC PARCEL 2
 WILLIAMSBURG CROSSING
 GPIN: 4812200002
 (INST. #120018619)
 (P.B. 75, P. 92)

NOW OR FORMERLY Z-CHICKEN HOLDINGS, LLC PARCEL 24
 WILLIAMSBURG CROSSING
 GPIN: 4812200024
 (INST. #10005730)

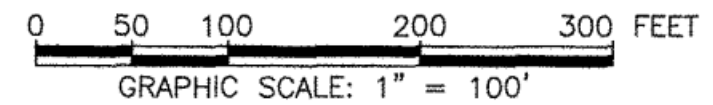
NOW OR FORMERLY UNIVERSITY SQUARE ASSOCIATES PARCEL 25
 WILLIAMSBURG CROSSING
 GPIN: 4812200025
 (D.B. 357, P. 125)
 (INST. #990026846)
 (INST. #150010679)

NOW OR FORMERLY UNIVERSITY SQUARE ASSOCIATES PARCEL 26
 WILLIAMSBURG CROSSING
 GPIN: 4812200026
 (D.B. 357, P. 125)
 (INST. #990026846)
 (INST. #150010679)

NOW OR FORMERLY UNIVERSITY SQUARE ASSOCIATES PARCEL 27
 WILLIAMSBURG CROSSING
 GPIN: 4812200027
 (D.B. 357, P. 125)
 (INST. #990026846)
 (INST. #150010679)

NOW OR FORMERLY UNIVERSITY SQUARE ASSOCIATES PARCEL 28
 WILLIAMSBURG CROSSING
 GPIN: 4812200028
 (D.B. 357, P. 125)
 (INST. #990026846)

SHEET INDEX:
 SHEET 1 OF 2: OVERALL SITE LAYOUT AND AREAS
 SHEET 2 OF 2: PROPERTY DATA, EASEMENTS, CURVE AND LINE TABLE
 SHEET 3 OF 5: BUILDING DETAIL
 SHEET 4 OF 5: FOUNDATION PLAN AND SECTION
 SHEET 5 OF 5: FLOOR PLANS



JCC Subdivision Agent Approval Not Required