

190009603

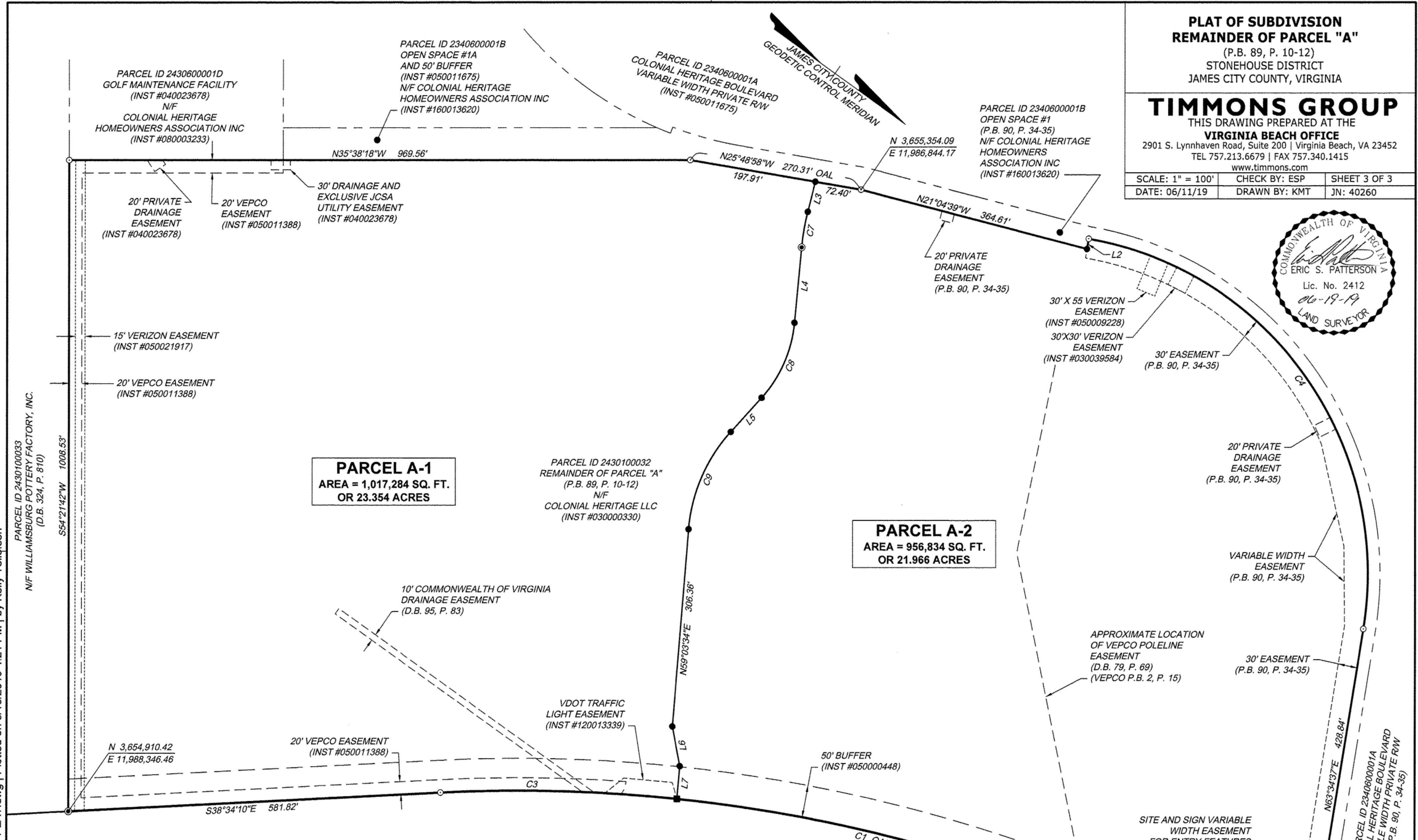
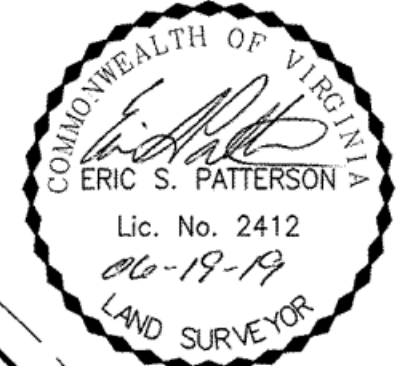
**PLAT OF SUBDIVISION
REMAINDER OF PARCEL "A"**

(P.B. 89, P. 10-12)
STONEHOUSE DISTRICT
JAMES CITY COUNTY, VIRGINIA

TIMMONS GROUP

THIS DRAWING PREPARED AT THE
VIRGINIA BEACH OFFICE
2901 S. Lynnhaven Road, Suite 200 | Virginia Beach, VA 23452
TEL 757.213.6679 | FAX 757.340.1415
www.timmons.com

SCALE: 1" = 100'	CHECK BY: ESP	SHEET 3 OF 3
DATE: 06/11/19	DRAWN BY: KMT	JN: 40260



PARCEL A-1
AREA = 1,017,284 SQ. FT.
OR 23.354 ACRES

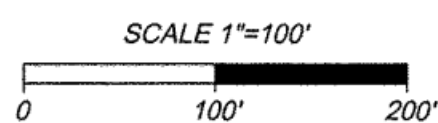
PARCEL A-2
AREA = 956,834 SQ. FT.
OR 21.966 ACRES

CURVE TABLE						
CURVE	RADIUS	LENGTH	TANGENT	DELTA	CHORD BEARING	CHORD
C1	2402.81'	1325.21'	679.93'	31°36'00"	S22°46'10"E	1308.48'
C2	2402.81'	955.64'	484.22'	22°47'15"	S18°21'48"E	949.35'
C3	2402.81'	369.57'	185.15'	8°48'45"	S34°09'48"E	369.20'
C4	526.00'	820.91'	520.70'	89°25'11"	N18°52'02"E	740.10'
C5	526.00'	151.57'	76.32'	16°30'38"	N71°49'56"E	151.05'
C6	35.00'	19.46'	9.99'	31°51'17"	S22°53'49"E	19.21'
C7	360.00'	55.84'	27.98'	8°53'13"	N64°10'30"E	55.78'
C8	200.00'	128.79'	66.72'	36°53'47"	N78°10'47"E	126.58'
C9	255.00'	167.20'	86.73'	37°34'06"	N77°50'37"E	164.22'

LINE TABLE		
LINE	BEARING	LENGTH
L1	S6°58'10"E	36.29'
L2	S64°09'26"W	16.12'
L3	N68°37'06"E	48.00'
L4	N59°43'53"E	116.97'
L5	S83°22'20"E	71.30'
L6	N43°19'05"E	62.33'
L7	N59°24'39"E	51.07'

RICHMOND ROAD
U.S. ROUTE 60
STATE HIGHWAY PROJECT
0060-047-101-RW-202 AND 203

3 Large/Small Plat(s) Recorded
herewith as # 190009603



LEGEND / ABBREVIATIONS

- PIN FOUND
- PIN SET
- ⊙ NAIL SET
- DRILL HOLE SET
- OAL OVERALL LENGTH

City of Williamsburg & County of James City
Circuit Court: This PLAT was recorded on
July 3, 2019
at 2:40 AM/PM, PB PG
Document # 190009603
MONA A. FOLEY, CLERK
[Signature], Clerk

Y:\905140260-VHS_Williamsburg\DWG\40260-905V-PLAT.dwg | Plotted on 6/18/2019 4:21 PM | by Kelly Tellefsen