

190006391

SUBDIVISION OF PARCEL 1

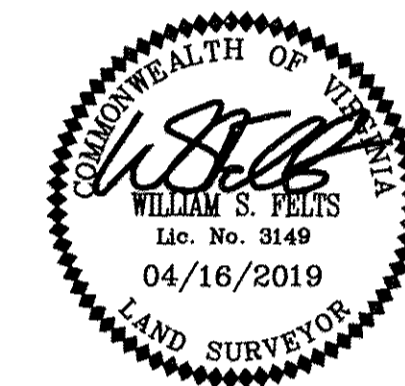
AS SHOWN ON PLAT OF THE PROPERTY OF
R.M. HAZELWOOD, JR., P.B. 83 PG. 31

STONEHOUSE DISTRICT, JAMES CITY COUNTY, VIRGINIA
DATE: 04/16/2019 SCALE: 1"=100' LRI JOB #17-574
SHEET 4 OF 4

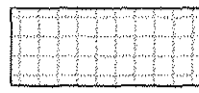


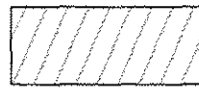
3925 Midlands Road Williamsburg, VA 23188
Ph: (757) 565-1677 Fax: (757) 565-0782
web: landtechresources.com

JCC S-19-0004

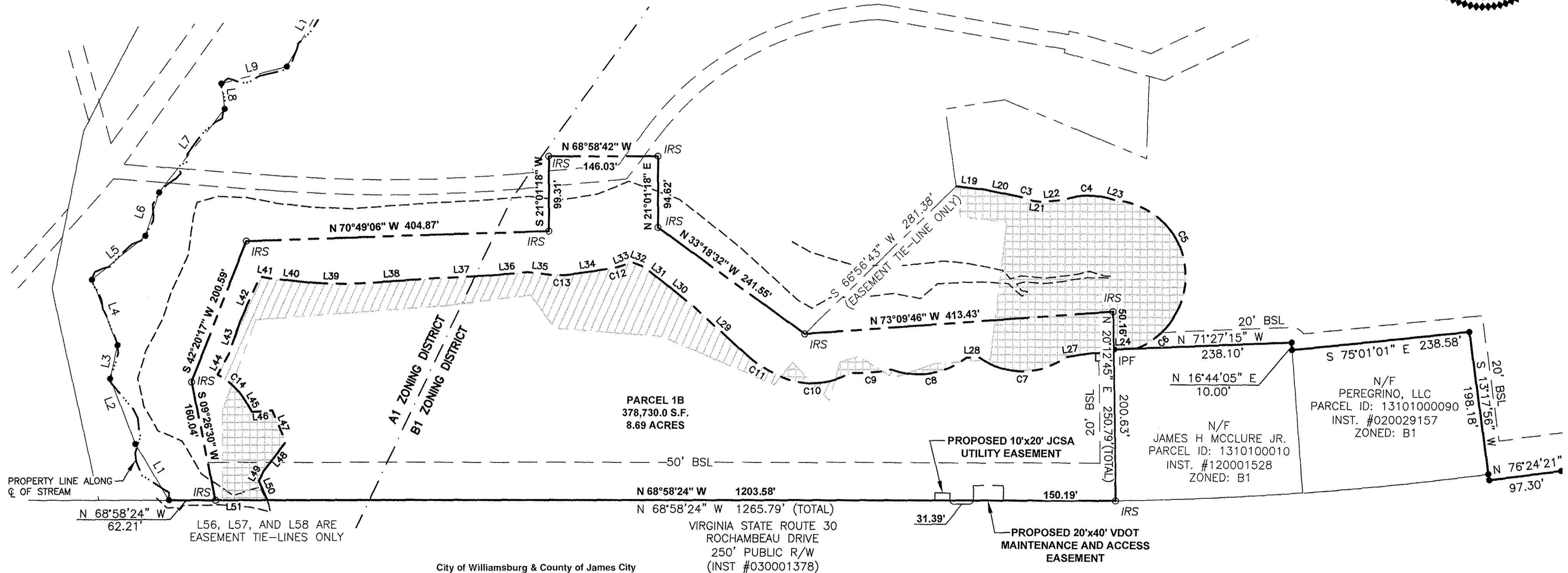
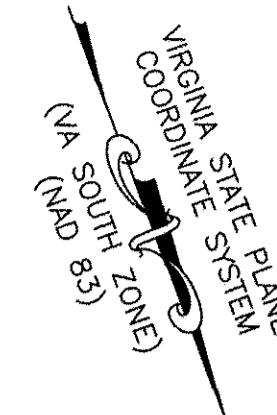


LINE	BEARING	DISTANCE
L19	N 62°47'50" W	36.54'
L20	N 58°00'44" W	45.98'
L21	N 63°03'30" W	15.11'
L22	N 75°19'50" W	26.89'
L23	N 51°28'03" W	6.58'
L24	N 71°27'15" W	29.76'
L25	N 20°12'45" E	4.84'
L26	N 68°53'13" W	28.05'
L27	N 77°36'31" W	35.34'
L28	S 68°52'25" E	17.06'
L29	N 26°56'06" W	102.66'
L30	N 30°29'55" W	49.75'
L31	N 31°20'21" W	32.42'
L32	N 49°00'43" W	16.98'
L33	S 89°05'50" W	8.49'
L34	N 77°19'25" W	49.58'
L35	N 63°18'08" W	33.89'
L36	N 73°41'06" W	51.62'
L37	N 71°55'52" W	70.43'
L38	N 72°47'10" W	116.65'
L39	N 66°57'56" W	47.20'
L40	N 63°06'51" W	60.68'
L41	N 59°41'11" W	13.05'
L42	S 44°39'46" W	64.96'
L43	S 40°45'31" W	46.22'
L44	S 48°55'31" W	30.66'
L45	S 09°42'31" E	14.54'
L46	N 72°43'25" W	27.14'
L47	N 02°19'53" E	45.55'
L48	S 58°14'20" W	47.87'
L49	S 49°06'30" W	14.89'
L50	S 03°18'16" E	28.21'
L51	S 48°58'24" E	69.51'

 NATURAL OPEN SPACE EASEMENT HEREBY DEDICATED TO JAMES CITY COUNTY (AREA=61,311 S.F.±)

 NATURAL OPEN SPACE EASEMENT TO BE VACATED (AREA=36,898 S.F.±)

CURVE	ARC LENGTH	RADIUS	DELTA ANGLE	CHORD BEARING	CHORD LENGTH
C3	21.59'	100.00'	12°22'19"	N 51°49'35" W	21.55'
C4	65.74'	103.60'	36°21'30"	N 69°55'48" W	64.65'
C5	201.43'	100.00'	115°24'33"	S 06°56'49" E	169.06'
C6	72.43'	100.30'	41°22'44"	S 69°55'06" W	70.87'
C7	124.08'	100.00'	71°05'27"	N 69°30'12" W	116.27'
C8	106.22'	106.22'	57°17'40"	S 78°07'49" E	101.85'
C9	55.39'	237.84'	13°20'37"	S 73°18'33" E	55.27'
C10	104.52'	100.14'	59°48'13"	N 69°55'58" W	99.84'
C11	43.57'	144.26'	17°18'15"	S 36°34'46" E	43.40'
C12	23.70'	100.00'	13°34'45"	S 84°06'47" E	23.64'
C13	24.47'	100.00'	14°01'17"	N 70°18'46" W	24.41'
C14	53.88'	100.00'	30°52'08"	N 25°08'35" W	53.23'
C15	83.05'	100.00'	47°34'59"	N 29°20'22" W	80.68'



L56, L57, AND L58 ARE EASEMENT TIE-LINES ONLY

City of Williamsburg & County of James City
Circuit Court: This PLAT was recorded on
at 10:35 AM/PM, PB PG
Document # 190006391
MONA A. FOLEY, CLERK
Monica Foley Clerk

4 Large/Small Plat(s) Recorded
herewith as # 190006391

