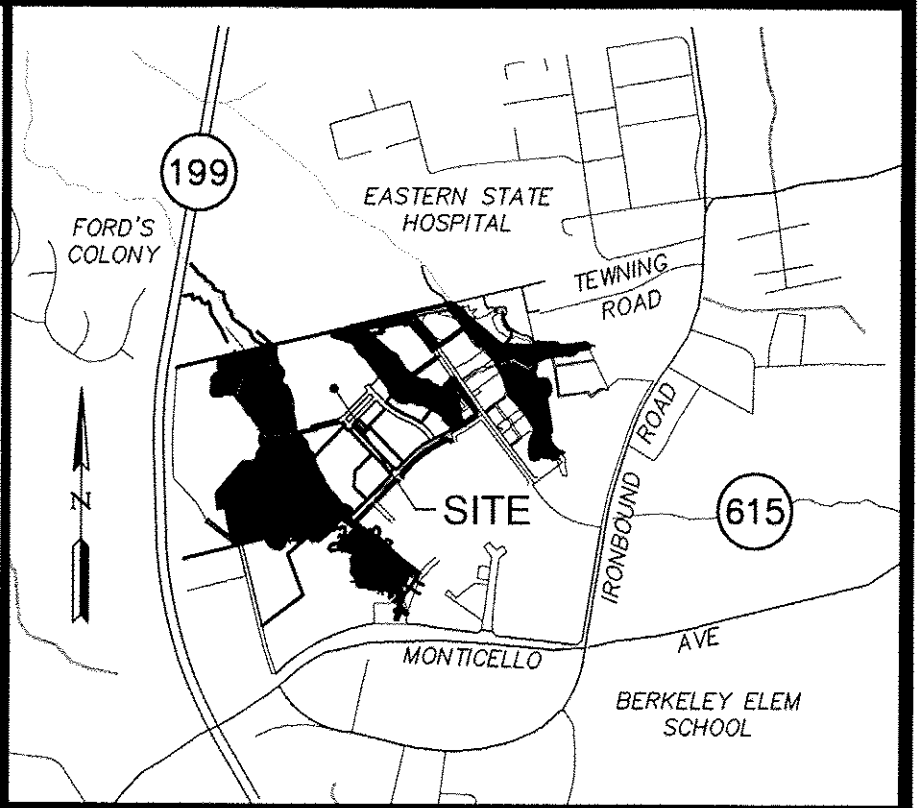
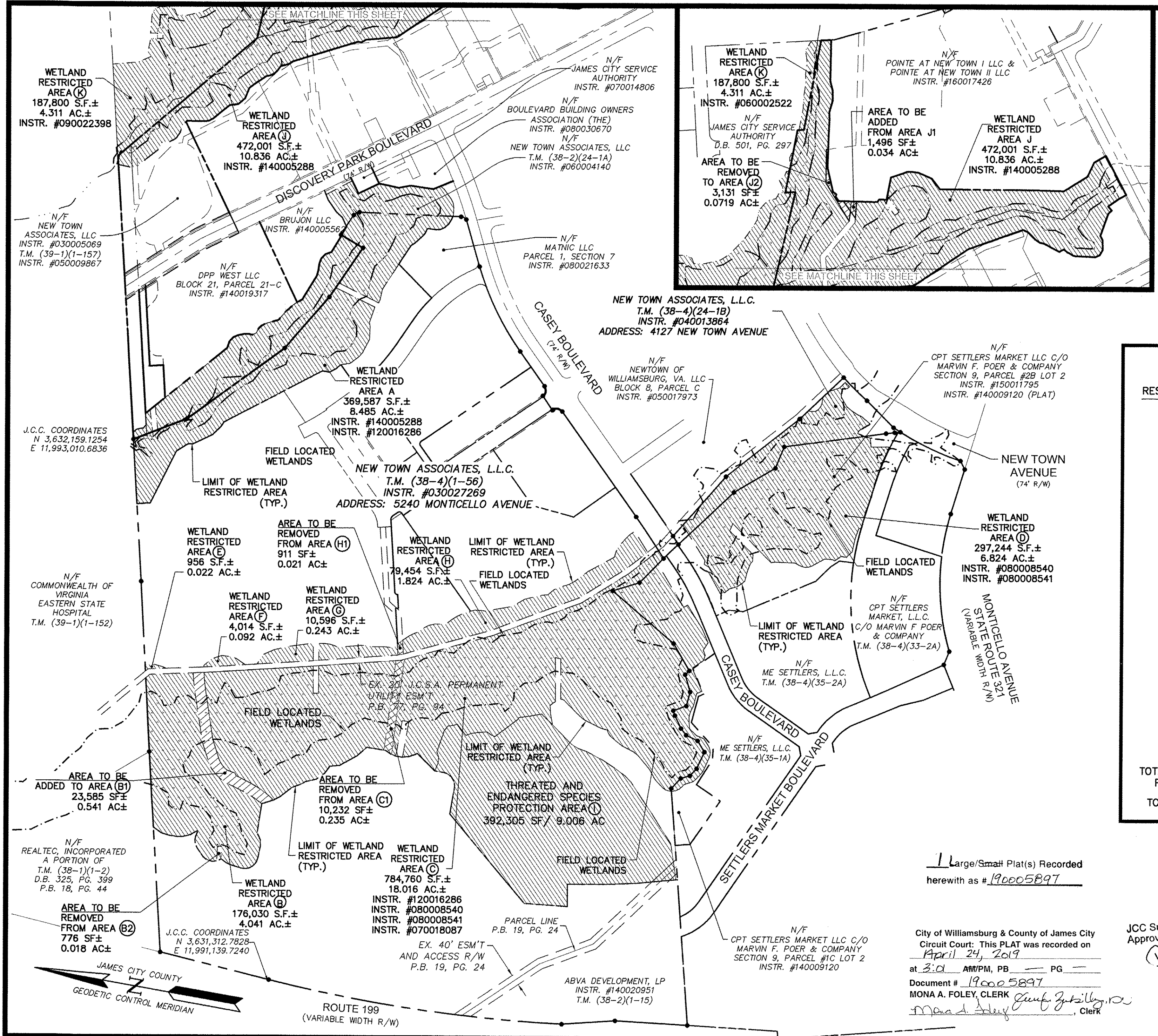


190005897



VICINITY MAP
SCALE: 1" = 2000'±

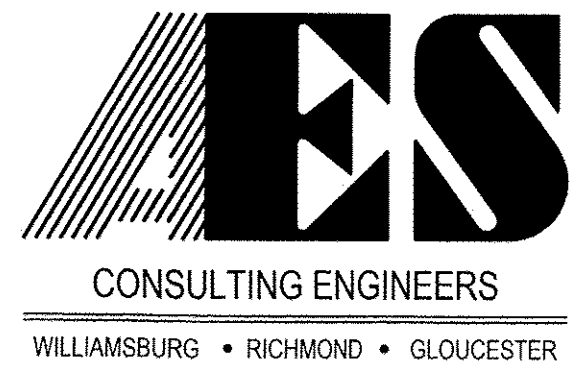
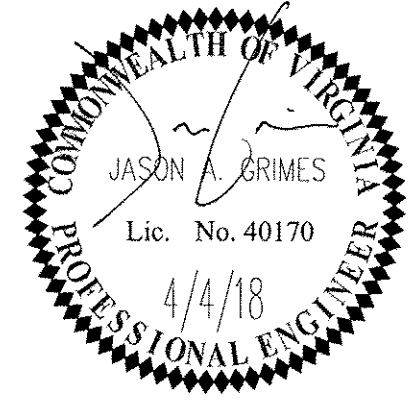
AREA TABULATION

WETLAND RESTRICTED AREA	S.F.±	AC.±
(A)	369,587 S.F.±	8.485 AC.±
(B)	176,030 S.F.±	4.041 AC.±
(B1)	23,585 S.F.±	0.541 AC.±
(B2)	-776 S.F.±	-0.018 AC.±
(C)	784,760 S.F.±	18.016 AC.±
(C1)	-10,232 S.F.±	-0.235 AC.±
(D)	297,244 S.F.±	6.824 AC.±
(E)	956 S.F.±	0.022 AC.±
(F)	4,014 S.F.±	0.092 AC.±
(G)	10,596 S.F.±	0.243 AC.±
(H)	80,384 S.F.±	1.845 AC.±
(H1)	-911 S.F.±	-0.021 AC.±
(I)	392,305 S.F.±	9.006 AC.±
(J)	472,001 S.F.±	10.836 AC.±
(J1)	1,496 S.F.±	0.034 AC.±
(J2)	-3,131 S.F.±	-0.072 AC.±
(K)	187,800 S.F.±	4.311 AC.±
TOTAL	2,785,708 S.F.±	63.950 AC.±
TOTAL WETLANDS PRESERVED	1,201,934 S.F.±	27.593 AC.±
TOTAL BUFFERS	1,583,774 S.F.±	36.357 AC.±

1 Large/Small Plat(s) Recorded
herewith as # 190005897

City of Williamsburg & County of James City
Circuit Court: This PLAT was recorded on
April 24, 2019
at 3:04 AM/PM, PB _____ PG _____
Document # 190005897
MONA A. FOLEY, CLERK
Monica Foley Clerk

JCC Subdivision Agent
Approval Not Required
PH 24 April 2019



2548 Olde Towne Road, Suite 1
Williamsburg, Virginia 23188
(757) 253-0040
Fax (757) 220-8994

"REVISED EXHIBIT A"
PLAT SHOWING WETLAND RESTRICTED AREAS
FOR NEW TOWN
SECTION 7 & 8, AND 9
AND PORTION OF SECTION 4
BERKELEY DISTRICT JAMES CITY COUNTY VIRGINIA

No.	DATE	REVISION / COMMENT / NOTE	REVISED BY	REVIEWED BY
4	4/4/18	REVISED AREA J	LBA	JAG
3	1/12/18	ADDED JCC PROPERTY (AREA J & K)	DLA	JAG
2	12/22/17	COMPOSITE EXHIBIT CREATED	MRG	JAG
1	6/30/08	REVISED BOUNDARY OF RESTRICTED AREA C & D	AWT	REC

Designed AES	Drawn AWT
Scale 1"=250'	Date 3/26/07
Project No. 6632-E-16	
Drawing No. 1 of 1	

S:\05897\190005897\190005897.dwg created: 2017-10-25 08:52:18 W:\dms\l\l\190005897.dwg 11/03/2019 11:02:21 AM D:\ms\l\l\190005897.dwg