



**SURVEYORS CERTIFICATE**

I HEREBY CERTIFY THAT THE PLAN PREVIOUSLY RECORDED FOR GOVERNOR'S GROVE AT FIVE FORKS, A CONDOMINIUM AT INSTRUMENT NO. 160009164 ACCURATELY DEPICTS THE CONVEYANCE AND RELATED IMPROVEMENTS SHOWN AND THAT THEY COMPLY WITH THE CODE OF VIRGINIA, AS AMENDED, AND THAT THEY AVOIDED 855-79.56(B) AND ARE SUBSTANTIALLY COMPLETE.

I HEREBY CERTIFY THAT THIS PLAN IS ACCURATE AND THAT IT COMPLIES WITH THE CODE OF VIRGINIA OF 1910, AS AMENDED, 855-79.58, AND I FURTHER CERTIFY THAT ALL IMPROVEMENTS OR PORTIONS THEREOF DEPICTED HEREON, PURSUANT TO THE CODE OF VIRGINIA, 855-79.56(A), ARE SUBSTANTIALLY COMPLETE.

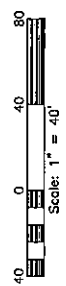
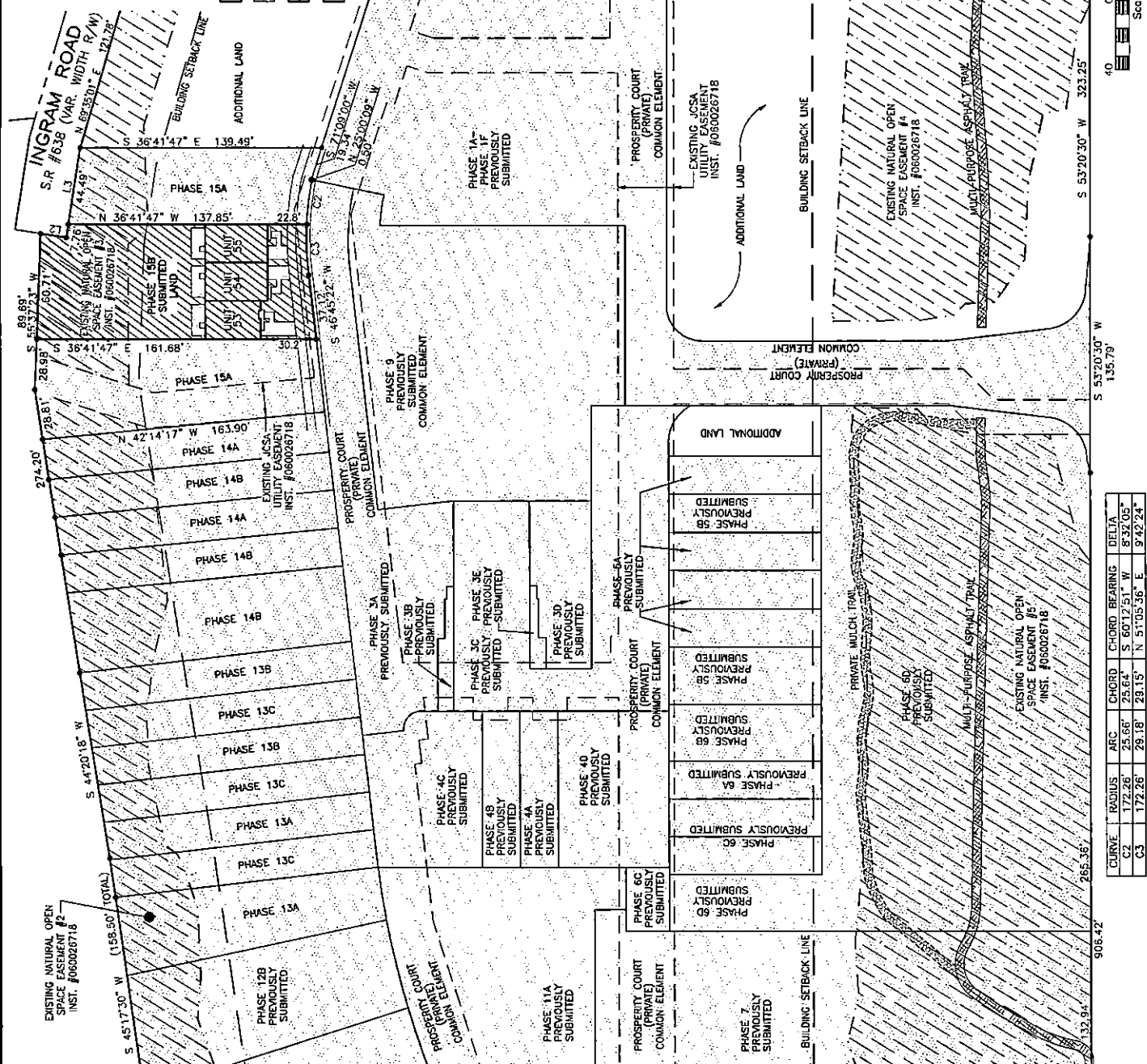
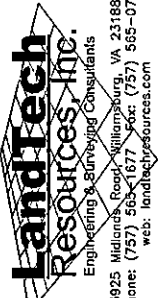
WILLIAM S. FELTS LIC. #3149 DATE 04/16/2019

- INDICATES ADDITIONAL LAND
- INDICATES PREVIOUSLY SUBMITTED LAND
- SUBMITTED LAND
- LIMITED COMMON ELEMENT (LCE)

RECORD PLAT  
DOC. #050025743

PLAT OF  
**PHASE 15B**  
**GOVERNOR'S GROVE AT FIVE FORKS**  
A CONDOMINIUM  
LOCATED IN THE BERKELEY DISTRICT  
JAMES CITY COUNTY, VIRGINIA

SCALE: 1" = 40'  
DATE: 04/16/2019 SHEET: 2 OF 2 JOB# 06-460



CURVE	RADIUS	ARC	CHORD	CHORD BEARING	DELTA
C2	172.26'	25.66'	25.64'	S 60°17'51" W	8°32'05"
C3	172.26'	79.18'	23.15'	N 51°05'36" E	9°42'24"