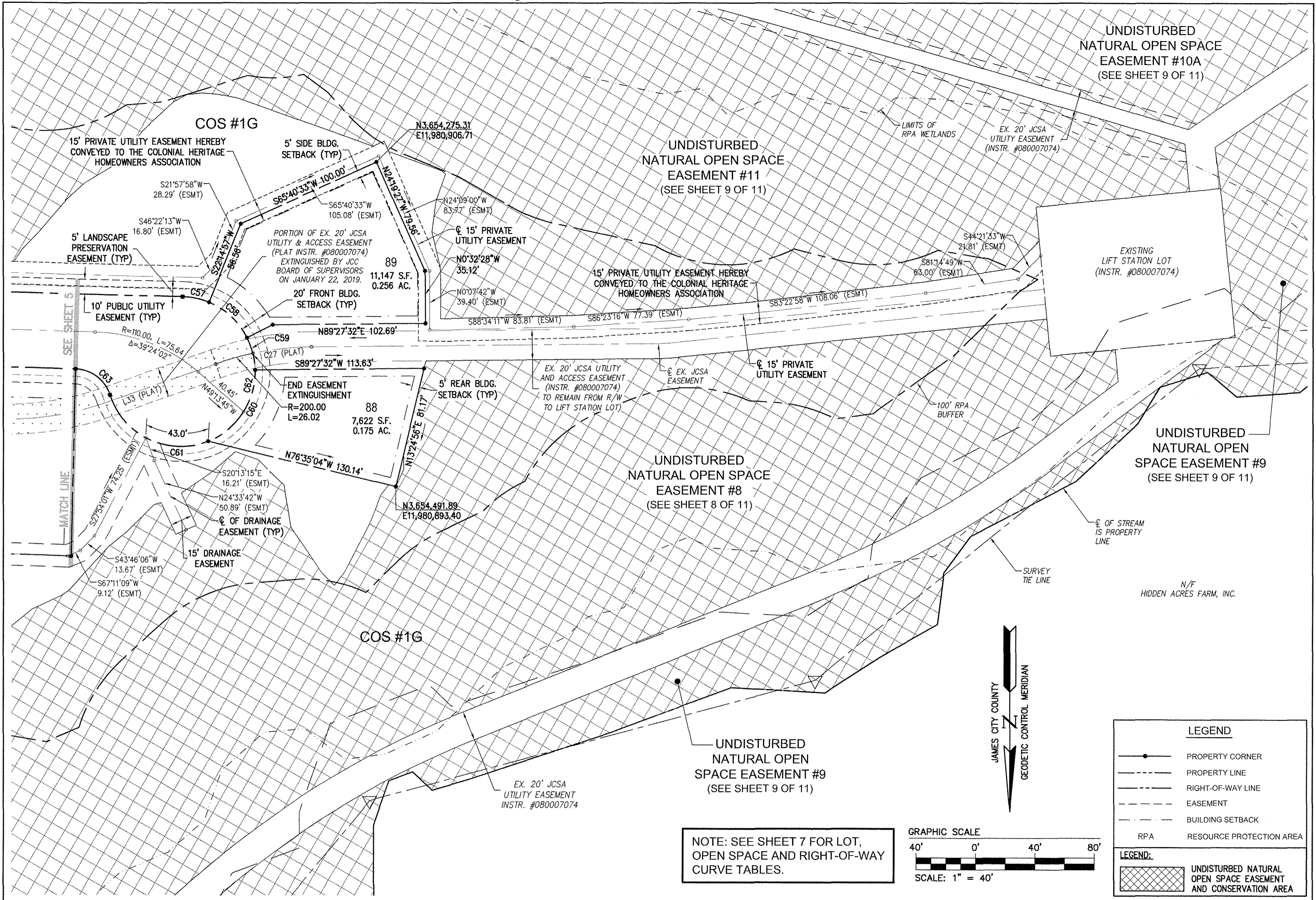


190005297



UNDISTURBED
NATURAL OPEN SPACE
EASEMENT #10A
(SEE SHEET 9 OF 11)

UNDISTURBED
NATURAL OPEN SPACE
EASEMENT #11
(SEE SHEET 9 OF 11)

UNDISTURBED
NATURAL OPEN
SPACE EASEMENT #9
(SEE SHEET 9 OF 11)

UNDISTURBED
NATURAL OPEN SPACE
EASEMENT #8
(SEE SHEET 8 OF 11)

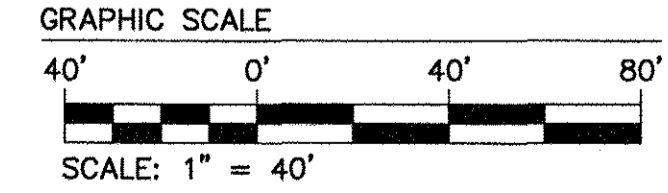
UNDISTURBED
NATURAL OPEN
SPACE EASEMENT #9
(SEE SHEET 9 OF 11)

LEGEND

- PROPERTY CORNER
- PROPERTY LINE
- RIGHT-OF-WAY LINE
- EASEMENT
- BUILDING SETBACK
- RPA RESOURCE PROTECTION AREA

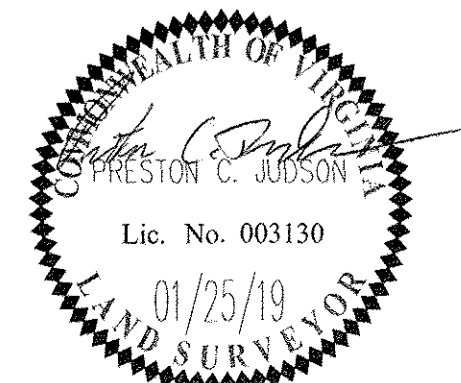
LEGEND:

- UNDISTURBED NATURAL OPEN SPACE EASEMENT AND CONSERVATION AREA



NOTE: SEE SHEET 7 FOR LOT,
OPEN SPACE AND RIGHT-OF-WAY
CURVE TABLES.

City of Williamsburg & County of James City Circuit Court; This PLAT was recorded on April 11 2019 at 2:45 AM/PM, PG —		
Document # 190005297 MONA A. FOLEY, CLERK <i>Mona A. Foley</i> , Clerk		
1	01/25/19	REVISED PER COUNTY COMMENTS DATED 10/2018
Rev.	Date	Description
		RMS Revised By



Large/Small Plat(s) Recorded
herewith as # **190005297**

5248 Olde Towne Road, Suite 1
Williamsburg, Virginia 23188
Phone: (757) 253-0040
Fax: (757) 220-8994
www.aesva.com

REF: JCC S-18-0053

PLAT OF SUBDIVISION
LOTS 68 THRU 122 & COS #1G, #3 AND #4
**COLONIAL HERITAGE
PHASE III - SECTION 2B**
OWNER / DEVELOPER: COLONIAL HERITAGE, LLC

STONEHOUSE DISTRICT JAMES CITY COUNTY VIRGINIA

Project Contacts:	PCJ/TRS
Project Number:	8881-32B
Scale:	1"=40'
Date:	08/28/18
Sheet Number	
6 of 11	

S:\COURTS\1320 Phase II Sec 2B\Survey\Plan\Phase III, Section 2B\8881-32B PLAT.dwg, 10/20/18 2:48:37 PM, 09/25/19