

PROJECT MANAGER: Kenneth McKenna P.E., (757) 956-3271 (Hampton Roads District)
SURVEYED BY: DATE: Darcy Williams L.S., (757) 925-2652 (Hampton Roads District)
DESIGN BY: Mary Pawlowski L.S., (757) 956-3265 (Hampton Roads District)
SUBSURFACE UTILITY BY: DATE: Jacumark, (804) 267-3142

HAMPTON ROADS DISTRICT DESIGN UNIT
Utility Owners

Water and Sewer:
James City Service Authority
Robert Carswell 757-592-1799

Hampton Roads Sewer District
757.460.2261

Dominion Virginia Power
804-771-3655

Cox Communications
757-222-6579 /
757-369-6261

Verizon
804.772.4409

James City Information
757-876-9637

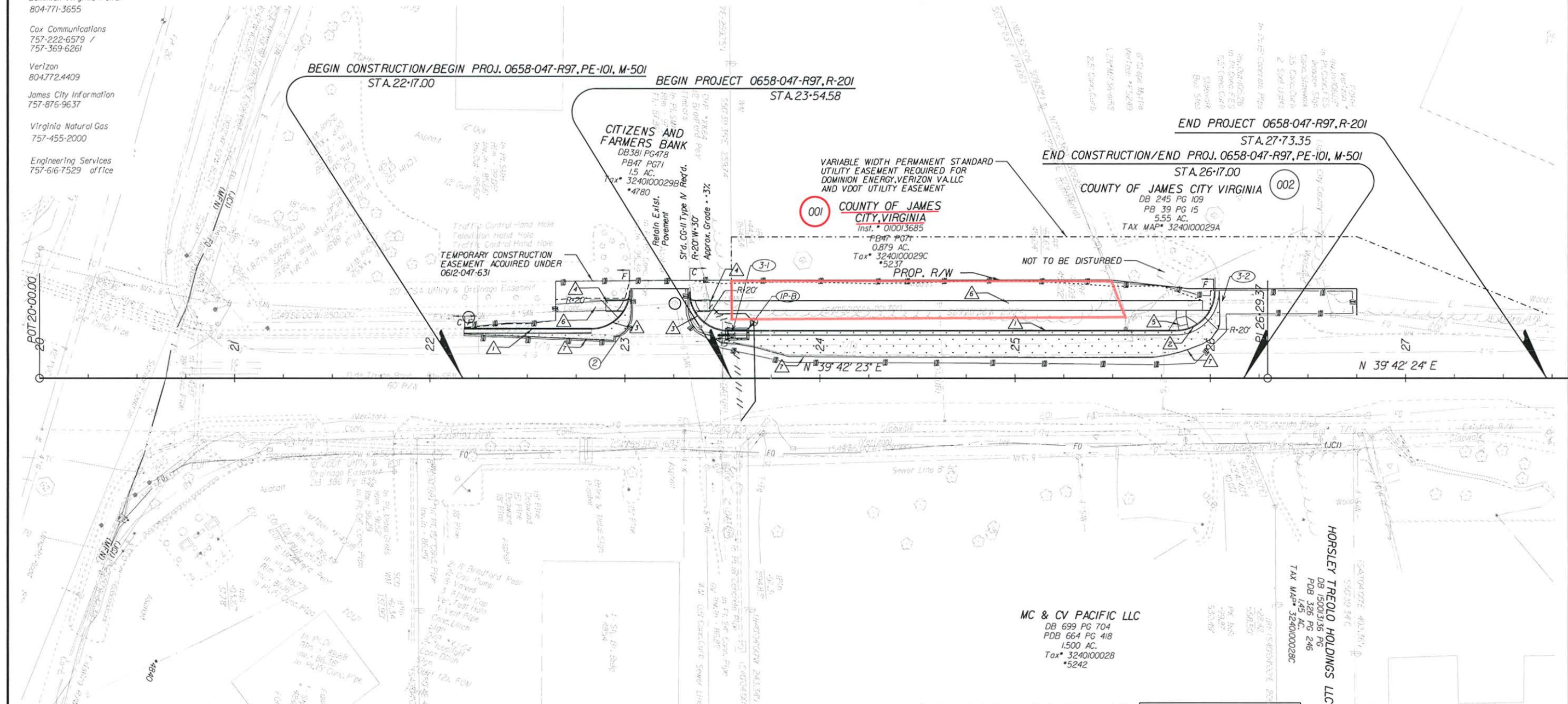
Virginia Natural Gas
757-455-2000

Engineering Services
757-616-7529 office

REVISED	STATE	ROUTE	STATE PROJECT	SHEET NO.
	VA.	658	0658-0047-R97, M-501	3

DESIGN FEATURES RELATING TO CONSTRUCTION OR TO REGULATION AND CONTROL OF TRAFFIC MAY BE SUBJECT TO CHANGE AS DEEMED NECESSARY BY THE DEPARTMENT

VDOT (Division) or Co. Name (Location), Virginia (TECHNICAL DISCIPLINE)	VDOT (Division) or Co. Name (Location), Virginia (TECHNICAL DISCIPLINE)



LEGEND

○ Denotes Drainage Structure Number

┌──┐ Denotes Construction Limits In Cuts

└──┘ Denotes Construction Limits In Fills

▨ Denotes Prop. Pavement

||| Denotes Limits of Disturbance

- ① ST'D. CG-6 REQ'D.
- ② RAD. CG-6 REQ'D.
- ③ ST'D. CG-2 REQ'D.
- ④ ST'D. CG-12 TYPE B REQ'D.
- ⑤ ST'D. CG-12 TYPE A REQ'D.
- ⑥ HYDRAULIC CEMENT CONC. SIDEWALK 4' REQ'D.
- ⑦ SAW-CUT ASPH CONC REQ'D.
- ⑧ CLEAN PIPE OUT

REFERENCES
(PROFILES, DETAIL & DRAINAGE DESCRIPTION SHEETS, ETC.)

Mainline Profile	3A
Drainage Descr.	3B

THESE PLANS ARE UNFINISHED AND ARE NOT TO BE USED FOR ANY TYPE OF CONSTRUCTION.



PROJECT	SHEET NO.
0658-0047-R97	3