

190003187

SURVEYORS CERTIFICATE

I HEREBY CERTIFY THAT THE PLAN PREVIOUSLY RECORDED FOR GOVERNOR'S GROVE AT FIVE FORKS, A CONDOMINIUM AT INSTRUMENT NO. 160009184 ACCURATELY DEPICTS THE UNIT AND RELATED IMPROVEMENTS SHOWN AND THAT THEY COMPLY WITH THE CODE OF VIRGINIA OF 1950, AS AMENDED §55-79.58(B) AND ARE SUBSTANTIALLY COMPLETE.

I HEREBY CERTIFY THAT THIS PLAT IS ACCURATE AND THAT IT COMPLIES WITH THE CODE OF VIRGINIA OF 1950, AS AMENDED, §55-79.58, AND I FURTHER CERTIFY THAT ALL IMPROVEMENTS OR PORTIONS THEREOF DEPICTED HEREON, PURSUANT TO THE CODE OF VIRGINIA, §55-79.58(A), ARE SUBSTANTIALLY COMPLETE.

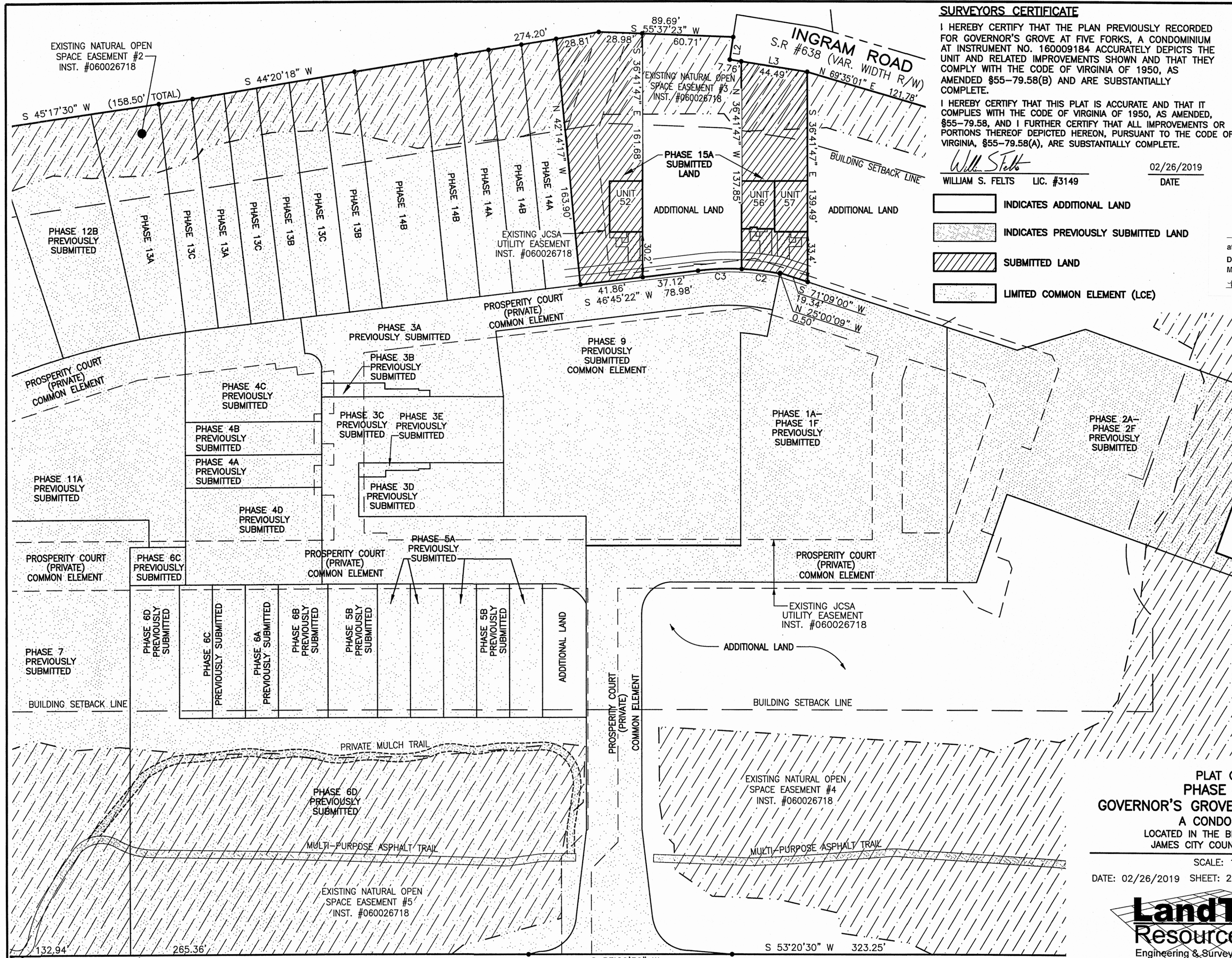
Will S. Felts
 WILLIAM S. FELTS LIC. #3149 DATE 02/26/2019

2 Large/Small Plat(s) Recorded herewith as # 190003187



City of Williamsburg & County of James City
 Circuit Court: This PLAT was recorded on 3-6-2019
 at 1:21 AM (PM) PB PG
 Document # 190003187
 MONA A. FOLEY, CLERK

- INDICATES ADDITIONAL LAND
- INDICATES PREVIOUSLY SUBMITTED LAND
- SUBMITTED LAND
- LIMITED COMMON ELEMENT (LCE)



RECORD PLAT
 DOC. #050025743

JCC Subdivision Agent Approval Not Required

PLAT OF
PHASE 15A
GOVERNOR'S GROVE AT FIVE FORKS
 A CONDOMINIUM
 LOCATED IN THE BERKELEY DISTRICT
 JAMES CITY COUNTY, VIRGINIA
 SCALE: 1" = 40'
 DATE: 02/26/2019 SHEET: 2 OF 2 JOB# 06-460



3925 Midlands Road, Williamsburg, VA 23188
 Phone: (757) 565-1677 Fax: (757) 565-0782
 web: landtechresources.com

CURVE	RADIUS	ARC	CHORD	CHORD BEARING	DELTA
C2	172.26'	25.66'	25.64'	S 60°12'51" W	8°32'05"
C3	172.26'	29.18'	29.15'	N 51°05'36" E	9°42'24"

