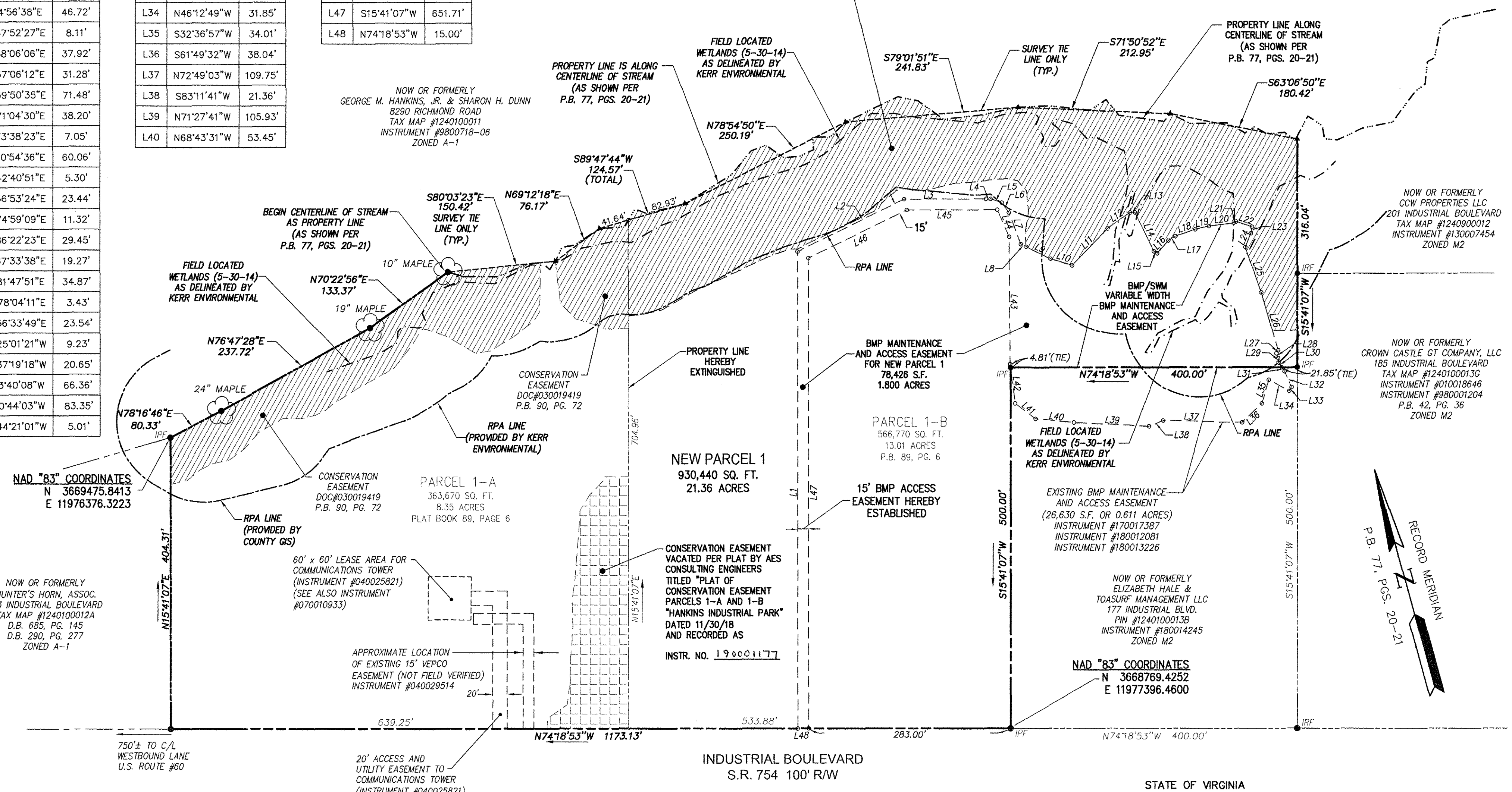


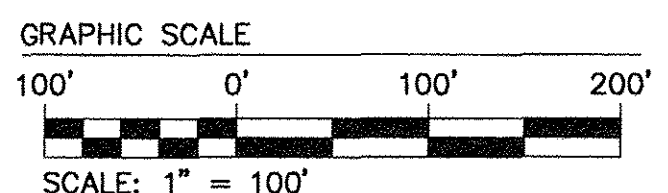
LINE	BEARING	LENGTH
L1	N15°41'07"E	661.10'
L2	N79°44'53"E	165.33'
L3	S74°18'53"E	114.97'
L4	S74°18'53"E	6.34'
L5	S56°27'00"E	16.48'
L6	S20°10'14"E	16.98'
L7	S4°56'38"E	46.72'
L8	S47°52'27"E	8.11'
L9	S48°06'06"E	37.92'
L10	S57°06'12"E	31.28'
L11	N59°50'35"E	71.48'
L12	N71°04'30"E	38.20'
L13	S73°38'23"E	7.05'
L14	S10°54'36"E	60.06'
L15	S42°40'51"E	5.30'
L16	N56°53'24"E	23.44'
L17	N74°59'09"E	11.32'
L18	N86°22'23"E	29.45'
L19	S87°33'38"E	19.27'
L20	S81°47'51"E	34.87'
L21	N78°04'11"E	3.43'
L22	S56°33'49"E	23.54'
L23	S25°01'21"W	9.23'
L24	S37°19'18"W	20.65'
L25	S3°40'08"W	66.36'
L26	S0°44'03"W	83.35'
L27	S44°21'01"W	5.01'

L28	S4°35'09"E	7.00'
L29	S9°35'05"W	6.24'
L30	S18°04'59"E	7.84'
L31	S21°04'11"E	6.74'
L32	S8°47'12"E	23.96'
L33	S51°10'47"W	6.49'
L34	N46°12'49"W	31.85'
L35	S32°36'57"W	34.01'
L36	S61°49'32"W	38.04'
L37	N72°49'03"W	109.75'
L38	S83°11'41"W	21.36'
L39	N71°27'41"W	105.93'
L40	N68°43'31"W	53.45'

L41	N37°12'51"W	35.54'
L42	N8°20'55"W	54.97'
L43	N15°14'17"E	176.35'
L44	N8°37'56"W	40.99'
L45	N74°18'53"W	126.69'
L46	S79°44'53"W	152.49'
L47	S15°41'07"W	651.71'
L48	N74°18'53"W	15.00'



REFERENCE:
DOCUMENT #020030845
DOCUMENT #030019419
PLAT BOOK 89, PAGE 6
PLAT BOOK 90, PAGE 72
PLAT BOOK 77, PAGE 20 & 21



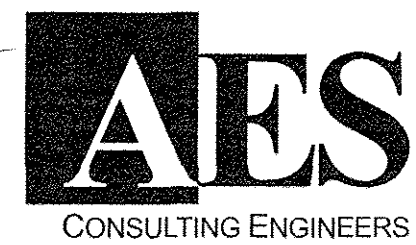
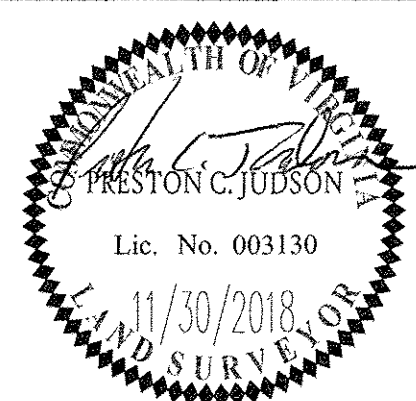
NOTE:
BMP MAINTENANCE AND ACCESS EASEMENTS ARE TO BE PRIVATE
(SEE ALSO INSTRUMENT #180007954)

2 Large Plat(s) Recorded
herewith as # 190002209

STATE OF VIRGINIA
CITY OF WILLIAMSBURG & COUNTY OF JAMES CITY CIRCUIT COURT.
THIS 14 DAY OF February, 2019.
THE PLAT SHOWN HEREON WAS PRESENTED AND ADMITTED TO
THE RECORD AS THE LAW DIRECTS. @ 8:50 AM/PM
INSTRUMENT # 190002209

TESTE: Elizabeth O'Connor DC.
MONA A. FOLEY, CLERK

Rev.	Date	Description	Revised By
3	01/15/19	REVISED PER JCC COMMENTS	JFS
2	12/05/18	PLAT REVISIONS INCLUDING REMOVAL OF VDOT DRAINAGE ESMT.	JFS
1	3/21/17	REVISED PER JCC COMMENTS	CJS



5248 Olde Towne Road, Suite 1
Williamsburg, Virginia 23188
Phone: (757) 253-0040
Fax: (757) 220-8994
www.aesva.com

Hampton Roads | Central Virginia | Middle Peninsula

JCC PROJECT NO. S-0045-2015

PLAT OF LOT LINE EXTINGUISHMENT AND BMP MAINTENANCE AND ACCESS EASEMENT

PARCELS 1-A AND 1-B

"HANKINS INDUSTRIAL PARK"

STONEHOUSE DISTRICT JAMES CITY COUNTY VIRGINIA

Project Contacts:	GVC/PCJ
Project Number:	9149-07
Scale:	Date:
1"=100'	02/10/17
Sheet Number	
2 OF 2	