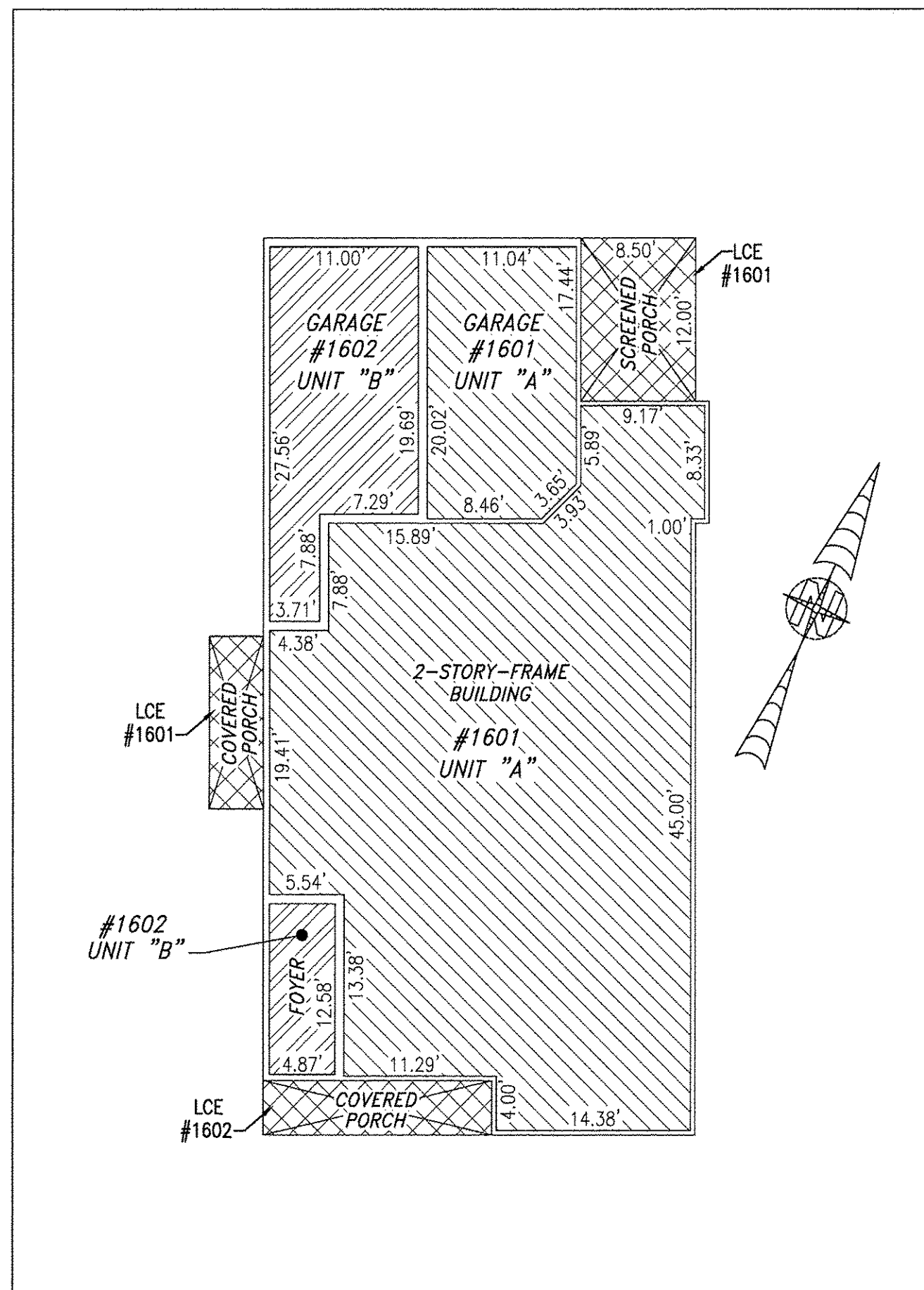
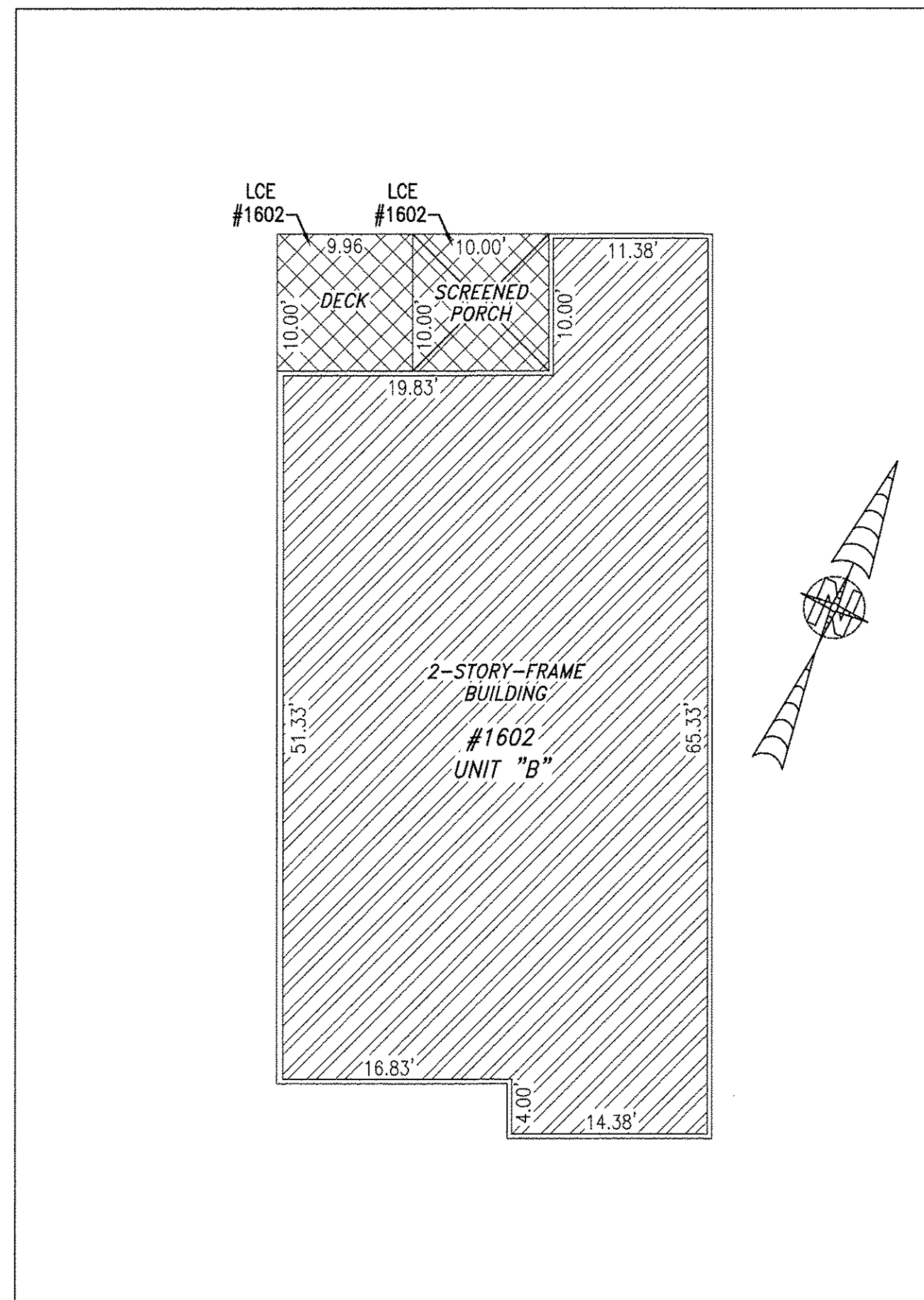


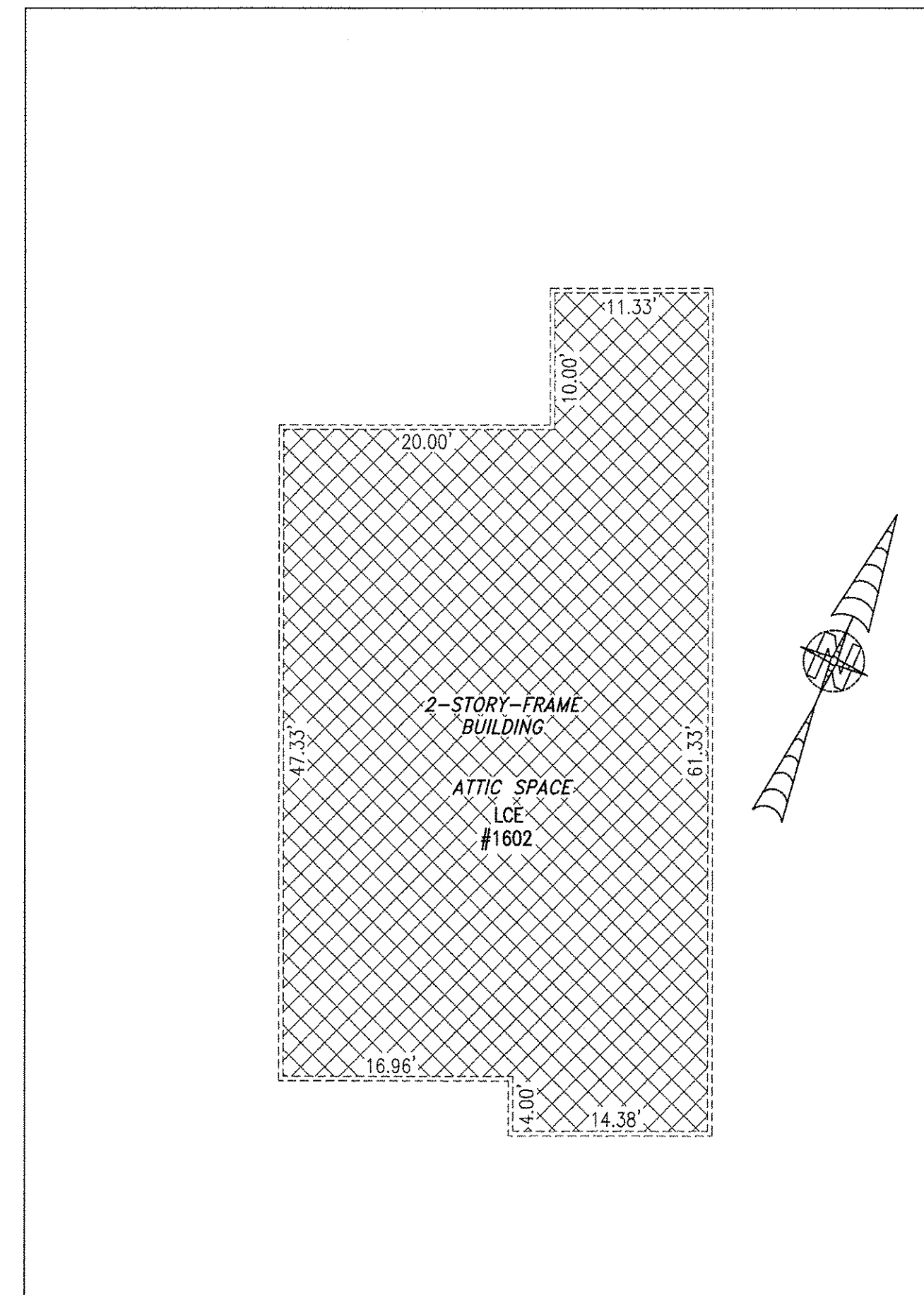
BUILDING 16 (DUPLEX)



FIRST FLOOR



SECOND FLOOR



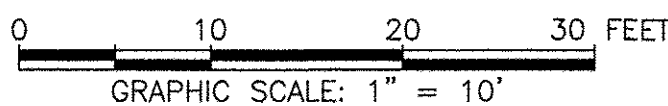
THIRD FLOOR

I HEREBY CERTIFY THAT THIS PLAN IS ACCURATE AND THAT IT COMPLIES WITH THE PROVISIONS OF THE CODE OF VIRGINIA OF 1950 AS AMENDED, § 55-79.58 AND I FURTHER CERTIFY THAT ALL UNITS THEREOF DEPICTED HEREON, PURSUANT TO THE CODE OF VIRGINIA § 55-79.58B, ARE SUBSTANTIALLY COMPLETE.

| UNIT ID | UNIT DESCRIPTION | UNIT ADDRESS |
|---------|-----------------------------------|----------------------|
| A | -INDICATES AREA OF UNIT 1601 | #1601 PROMENADE LANE |
| B | -INDICATES AREA OF UNIT 1602 | #1602 PROMENADE LANE |
| | -INDICATES COMMON ELEMENT | |
| | -INDICATES LIMITED COMMON ELEMENT | |

5 Large Plat(s) Recorded
herewith as # 190001141

City of Williamsburg & County of James City
Circuit Court: This PLAT was recorded on
1-28-2019
at 3:27 AM (P) PB PG
Document # 190001141
MONA A. FOLEY, CLERK
Mona A. Foley, Clerk

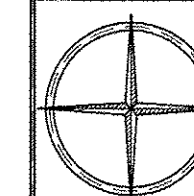


JCC Subdivision Agent *EBR*
Approval Not Required

THIS SHEET: FLOOR PLANS

PHASE 16
CONDOMINIUM PLAT AND PLAN
OF
THE PROMENADE
AT
JOHN TYLER
A CONDOMINIUM
JAMES CITY COUNTY, VIRGINIA

Jo# 160921



Hayden Frye and Associates, Inc.
Land Surveyors
333 KELLAM ROAD, SUITE 200
VIRGINIA BEACH, VA, 23462
PH: (757) 491-7228 FX: (757) 491-7229

DATE: JANUARY 9, 2019
SCALE: 1"=10'
SHEET 5 OF 5 THIS PHASE