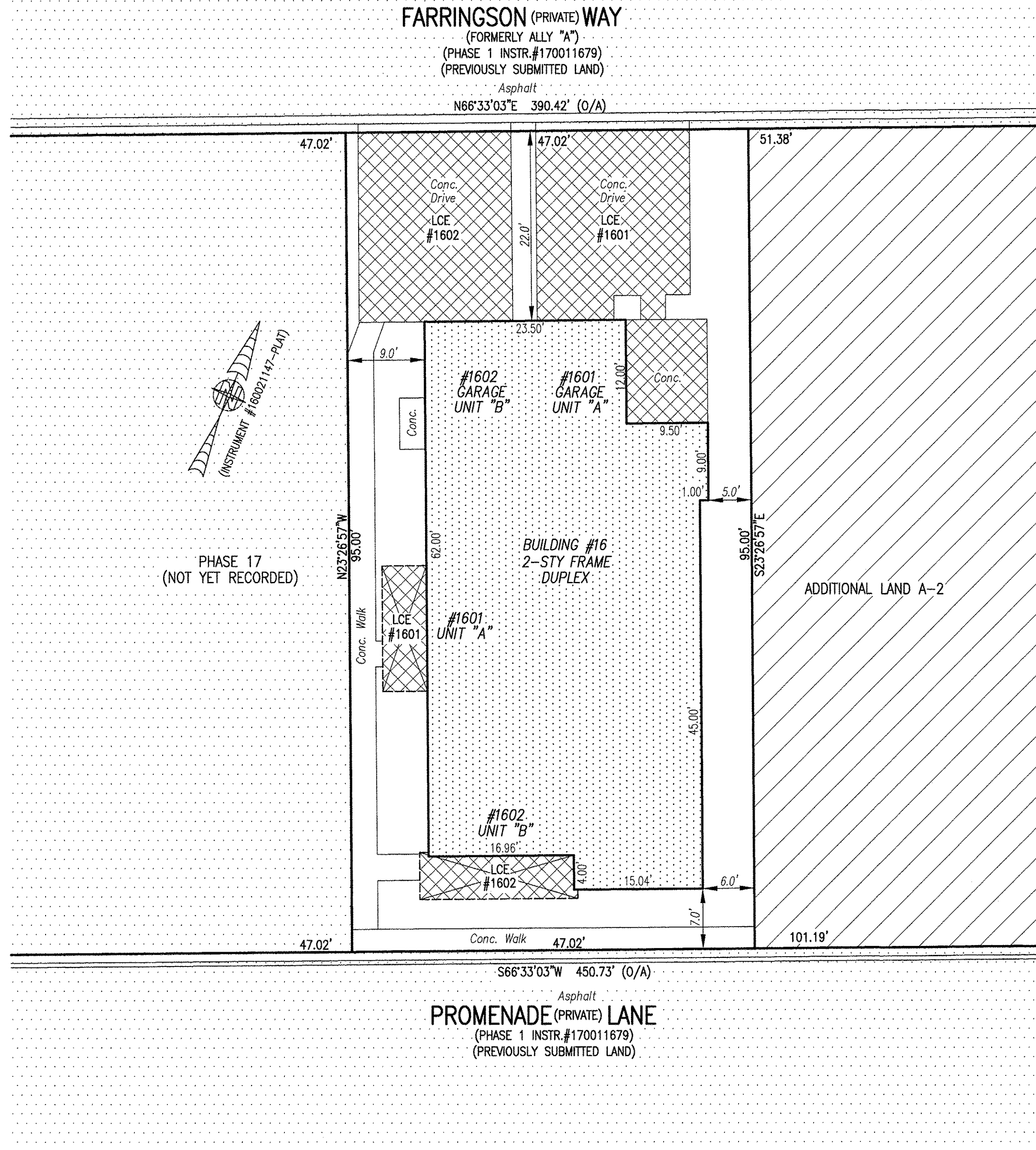
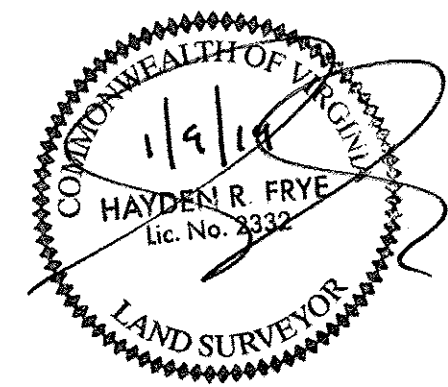


190001141

I HEREBY CERTIFY THAT THIS PLAT IS ACCURATE AND THAT IT COMPLIES WITH THE PROVISIONS OF THE CODE OF VIRGINIA OF 1950 AS AMENDED, § 55-79.58 AND I FURTHER CERTIFY THAT ALL IMPROVEMENTS THEREOF DEPICTED HEREON, PURSUANT TO THE CODE OF VIRGINIA § 55-79.58A, ARE SUBSTANTIALLY COMPLETE.



- INDICATES PREVIOUSLY SUBMITTED LAND
- INDICATES BUILDING AREA (SEE PLANS FOR UNIT DIMENSIONS)
- INDICATES LIMITED COMMON ELEMENT (LCE) ASSIGNED TO A UNIT # UNIT ASSIGNED
- INDICATES COMMON ELEMENT (EXCLUDING AREAS OUTSIDE SUBMITTED LAND)
- INDICATES ADDITIONAL LAND

LCE #1000 (EXAMPLE UNIT #)

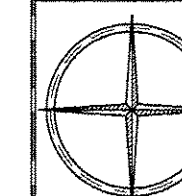
5 Large/Small Plat(s) Recorded herewith as # 190001141

City of Williamsburg & County of James City Circuit Court: This PLAT was recorded on 1-28-2019 at 3:27 AM/PM PB PG Document # 190001141 MONA A. FOLEY, CLERK

THIS SHEET: BUILDING DETAIL

PHASE 16 CONDOMINIUM PLAT AND PLAN OF THE PROMENADE AT JOHN TYLER A CONDOMINIUM JAMES CITY COUNTY, VIRGINIA

Jo# 160921



Hayden Frye and Associates, Inc. Land Surveyors 333 KELLAM ROAD, SUITE 200 VIRGINIA BEACH, VA, 23462 PH: (757) 491-7228 FX:(757) 491-7229

DATE: JANUARY 9, 2019

SCALE: 1"=10'

SHEET 3 OF 5 THIS PHASE

JCC Subdivision Agent Approval Not Required

