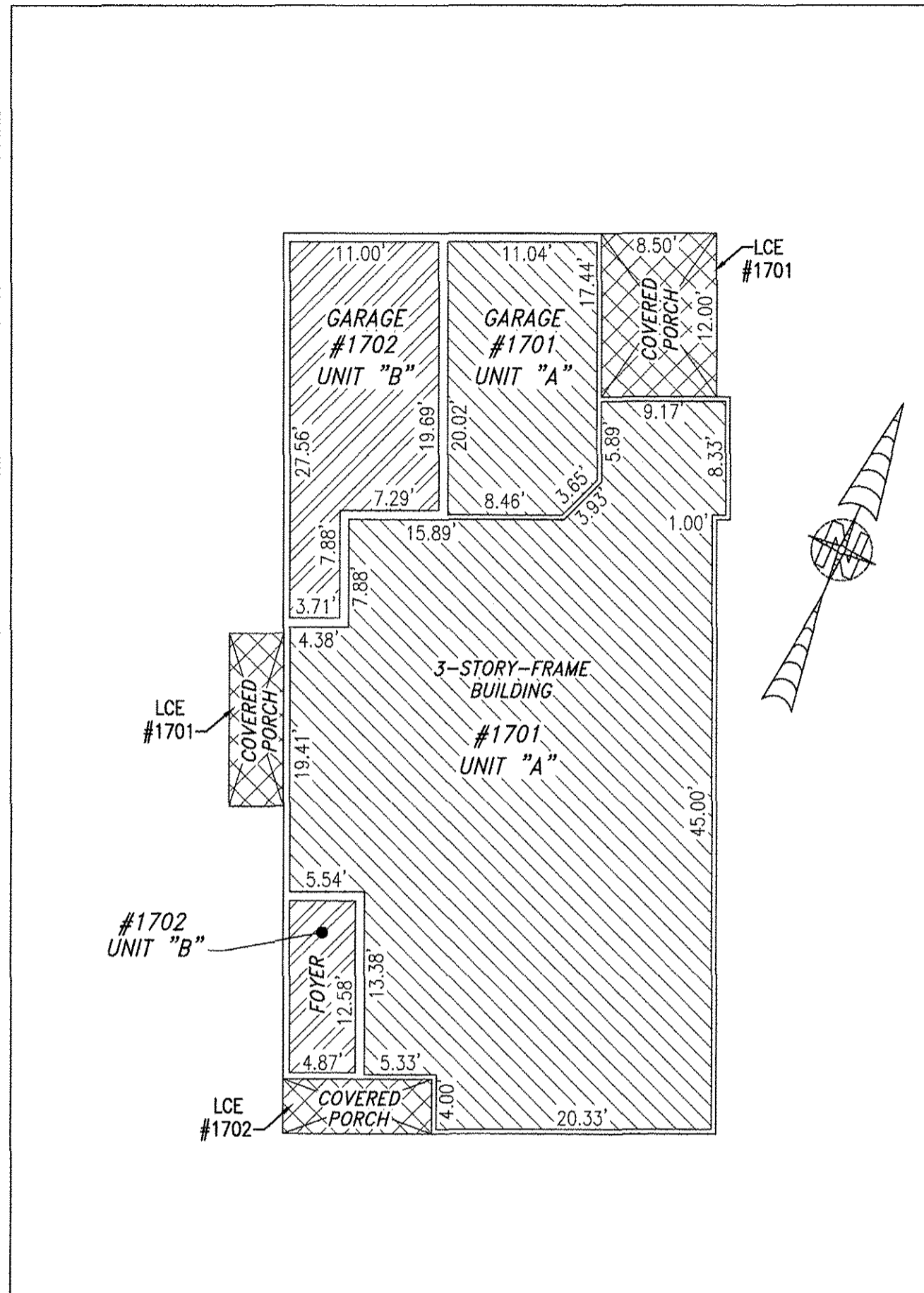
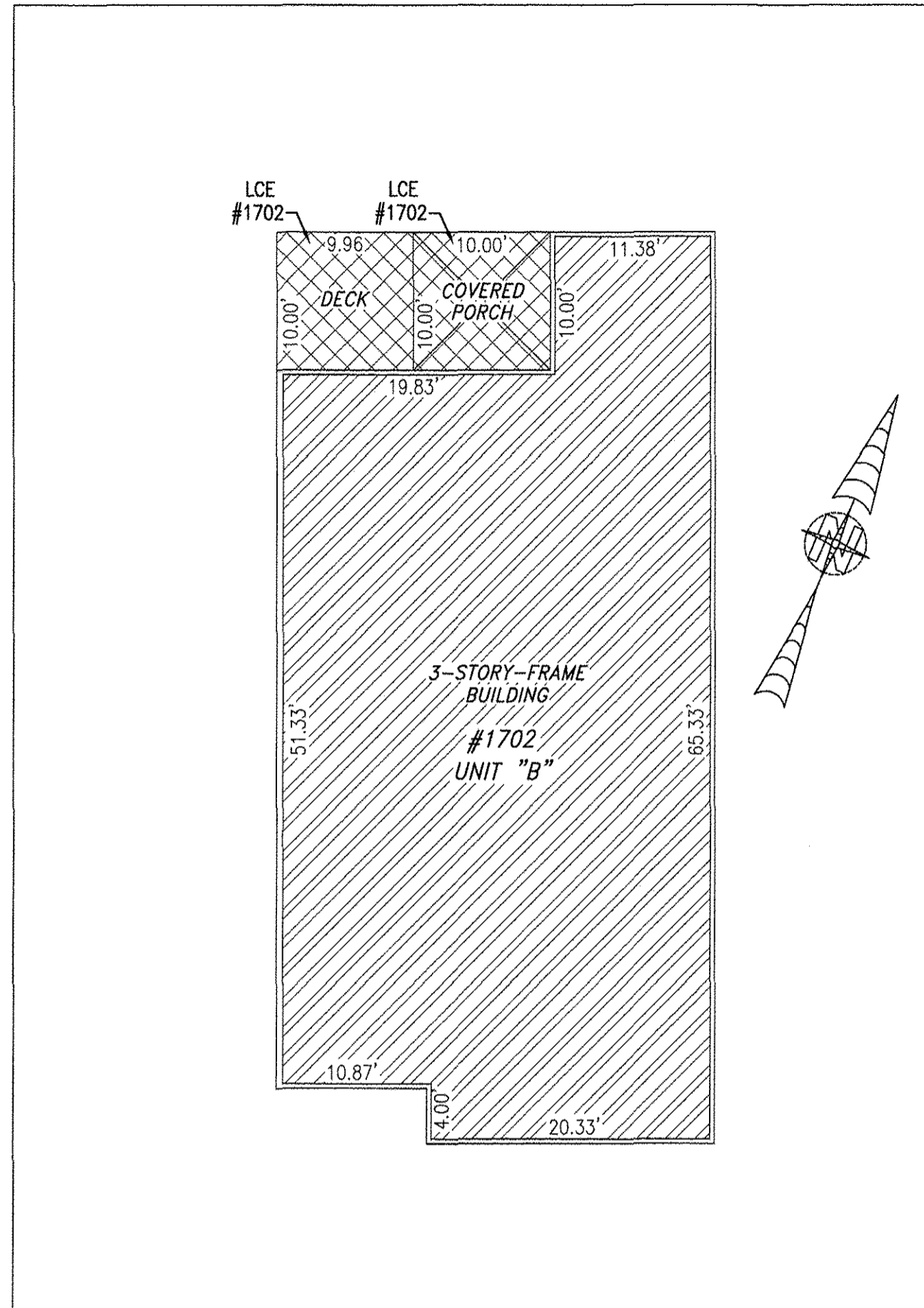


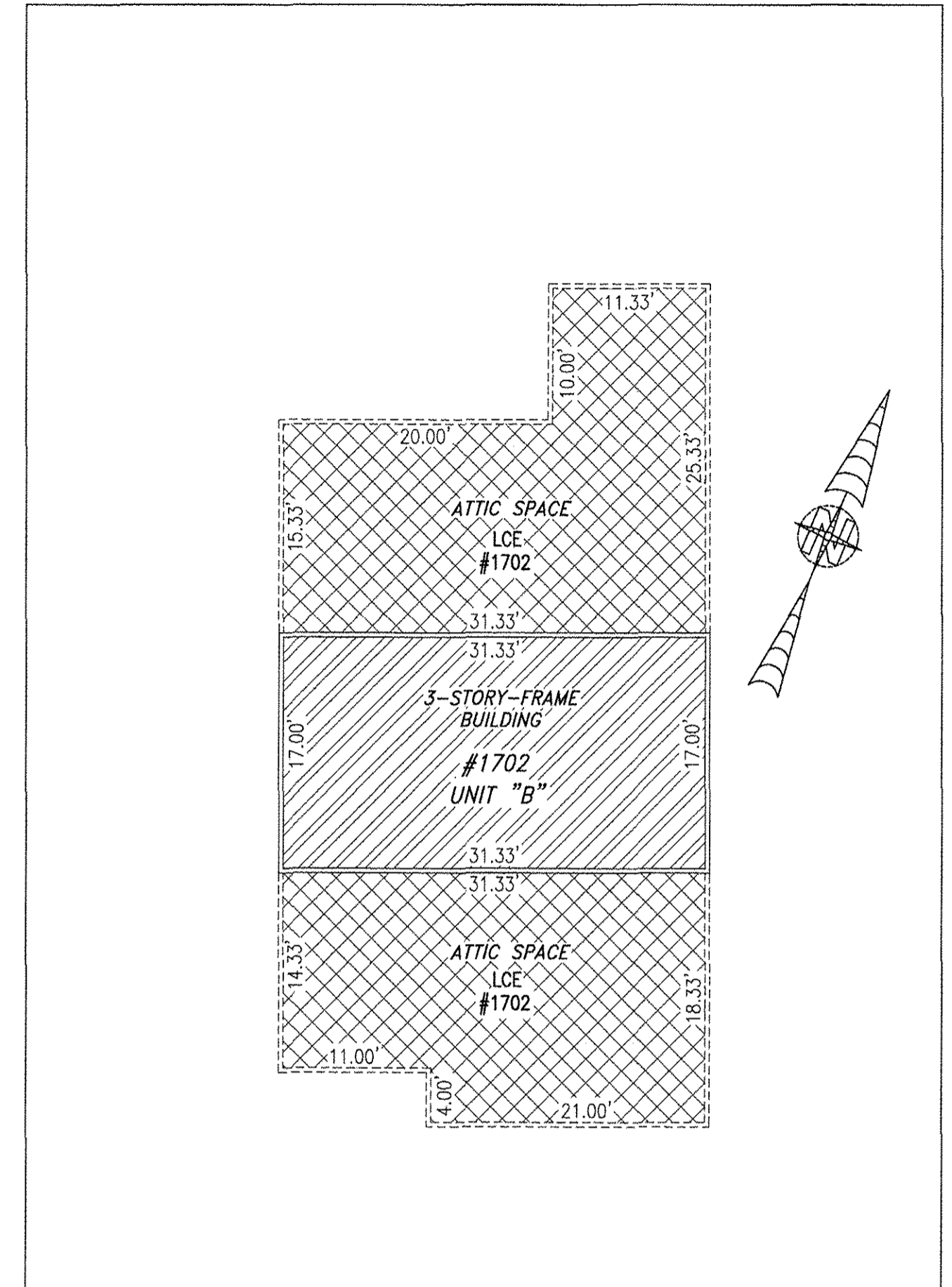
# BUILDING 17 (DUPLEX)



FIRST FLOOR



SECOND FLOOR

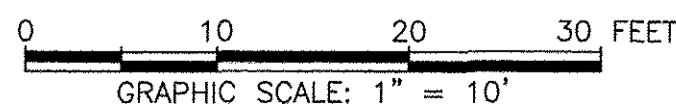
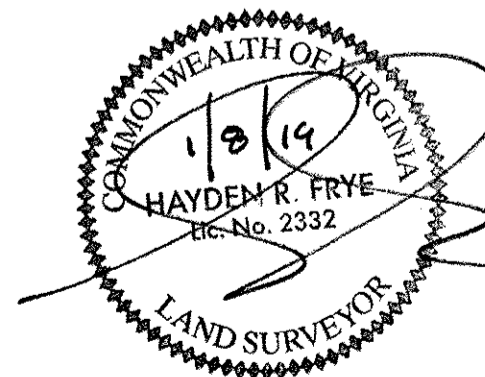


THIRD FLOOR

UNIT ID	UNIT DESCRIPTION	UNIT ADDRESS
A	-INDICATES AREA OF UNIT 1701	#1701 PROMENADE LANE
B	-INDICATES AREA OF UNIT 1702	#1702 PROMENADE LANE
	-INDICATES COMMON ELEMENT	
	-INDICATES LIMITED COMMON ELEMENT	

5 Large/Small Plat(s) Recorded  
herewith as # 190001140

City of Williamsburg & County of James City  
Circuit Court: This PLAT was recorded on  
Jan 28, 2019  
at 3:26 AM PM, PB PG  
Document # 190001140  
MONA A. FOLEY, CLERK JZ, DC  
Mona A. Foley, Clerk



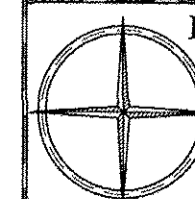
JCC Subdivision Agent ELG  
Approval Not Required

I HEREBY CERTIFY THAT THIS PLAN IS ACCURATE AND THAT IT COMPLIES WITH THE PROVISIONS OF THE CODE OF VIRGINIA OF 1950 AS AMENDED, § 55-79.58 AND I FURTHER CERTIFY THAT ALL UNITS THEREOF DEPICTED HEREON, PURSUANT TO THE CODE OF VIRGINIA § 55-79.58B, ARE SUBSTANTIALLY COMPLETE.

THIS SHEET: FLOOR PLANS

**PHASE 17**  
**CONDOMINIUM PLAT AND PLAN**  
OF  
**THE PROMENADE**  
AT  
**JOHN TYLER**  
A CONDOMINIUM  
JAMES CITY COUNTY, VIRGINIA

Jo# 160921



Hayden Frye and Associates, Inc.

**Land Surveyors**  
333 KELLAM ROAD, SUITE 200  
VIRGINIA BEACH, VA., 23462  
PH: (757) 491-7228 FX:(757) 491-7229

DATE: JANUARY 8, 2019  
SCALE: 1"=10'  
SHEET 5 OF 5 THIS PHASE