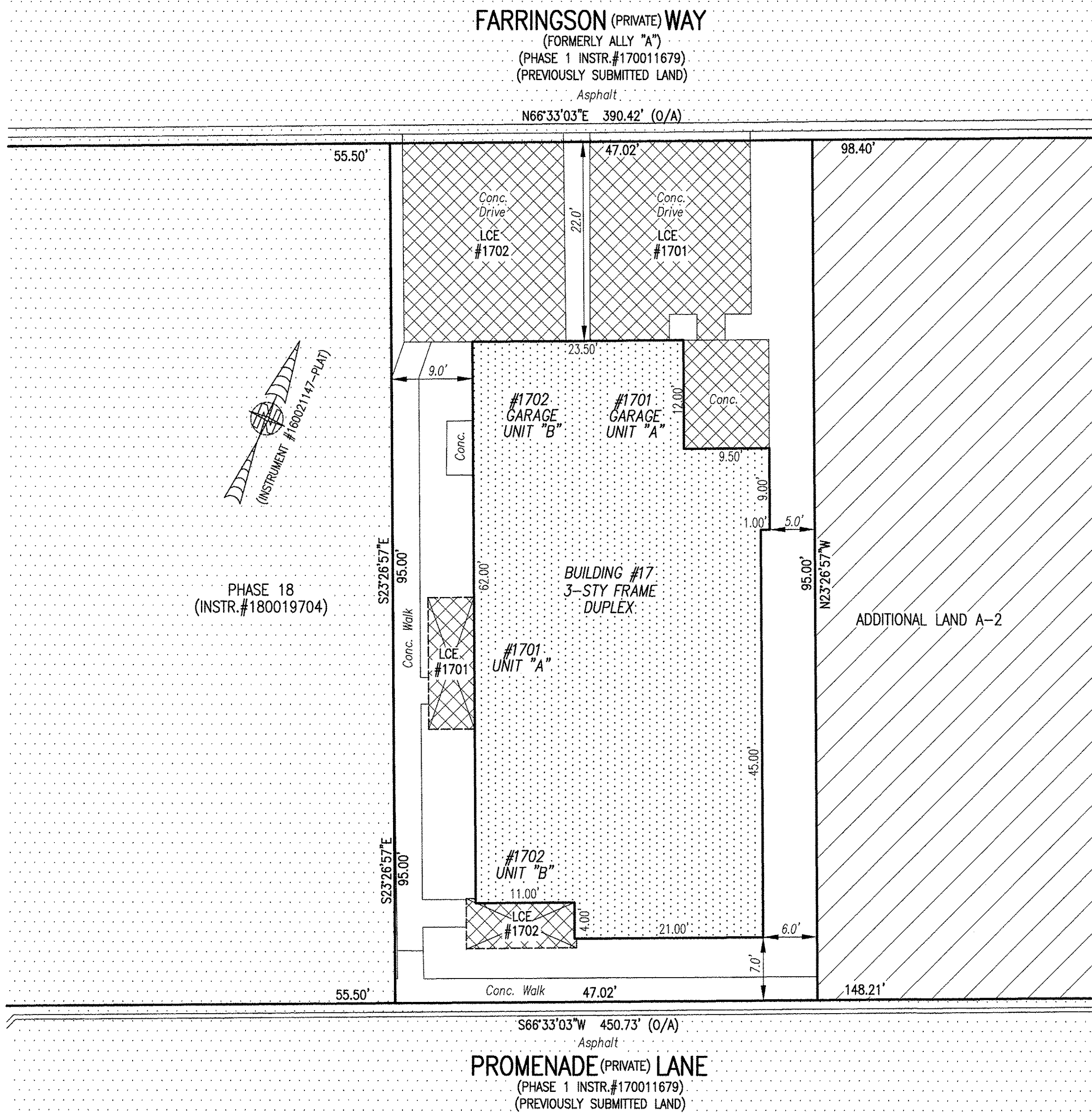
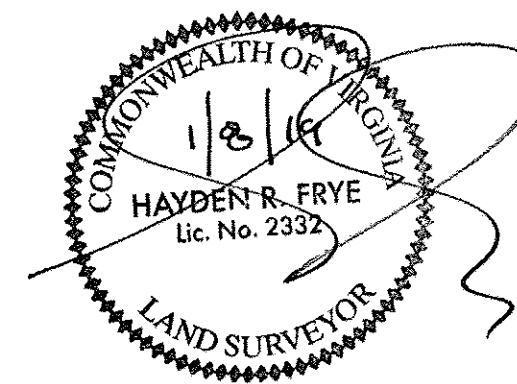
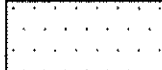



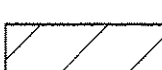


190001140

I HEREBY CERTIFY THAT THIS PLAT IS ACCURATE AND THAT IT COMPLIES WITH THE PROVISIONS OF THE CODE OF VIRGINIA OF 1950 AS AMENDED, § 55-79.58 AND I FURTHER CERTIFY THAT ALL IMPROVEMENTS THEREOF DEPICTED HEREON, PURSUANT TO THE CODE OF VIRGINIA § 55-79.58A, ARE SUBSTANTIALLY COMPLETE.



-  -INDICATES PREVIOUSLY SUBMITTED LAND
 -  -INDICATES BUILDING AREA (SEE PLANS FOR UNIT DIMENSIONS)
 -  -INDICATES LIMITED COMMON ELEMENT (LCE) ASSIGNED TO A UNIT # UNIT ASSIGNED
 -  -INDICATES COMMON ELEMENT (EXCLUDING AREAS OUTSIDE SUBMITTED LAND)
 -  -INDICATES ADDITIONAL LAND
- LCE #1000 (EXAMPLE UNIT #)

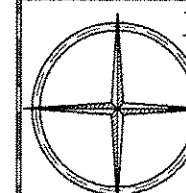
5 Large/Small Plat(s) Recorded herewith as # 190001140

City of Williamsburg & County of James City
Circuit Court: This PLAT was recorded on Jan 28, 2019
at 3:26 AM/PM, PB PG
Document # 190001140
MONA A. FOLEY, CLERK JE, DC
Monica Foley, Clerk

THIS SHEET: BUILDING DETAIL

PHASE 17
CONDOMINIUM PLAT AND PLAN
OF
THE PROMENADE
AT
JOHN TYLER
A CONDOMINIUM
JAMES CITY COUNTY, VIRGINIA

Jo# 160921



Hayden Frye and Associates, Inc.

Land Surveyors

333 KELLAM ROAD, SUITE 200
VIRGINIA BEACH, VA., 23462
PH: (757) 491-7228 FX:(757) 491-7229

DATE: JANUARY 8, 2019

SCALE: 1"=10'

SHEET 3 OF 5 THIS PHASE

JCC Subdivision Agent Approval Not Required *EF*

