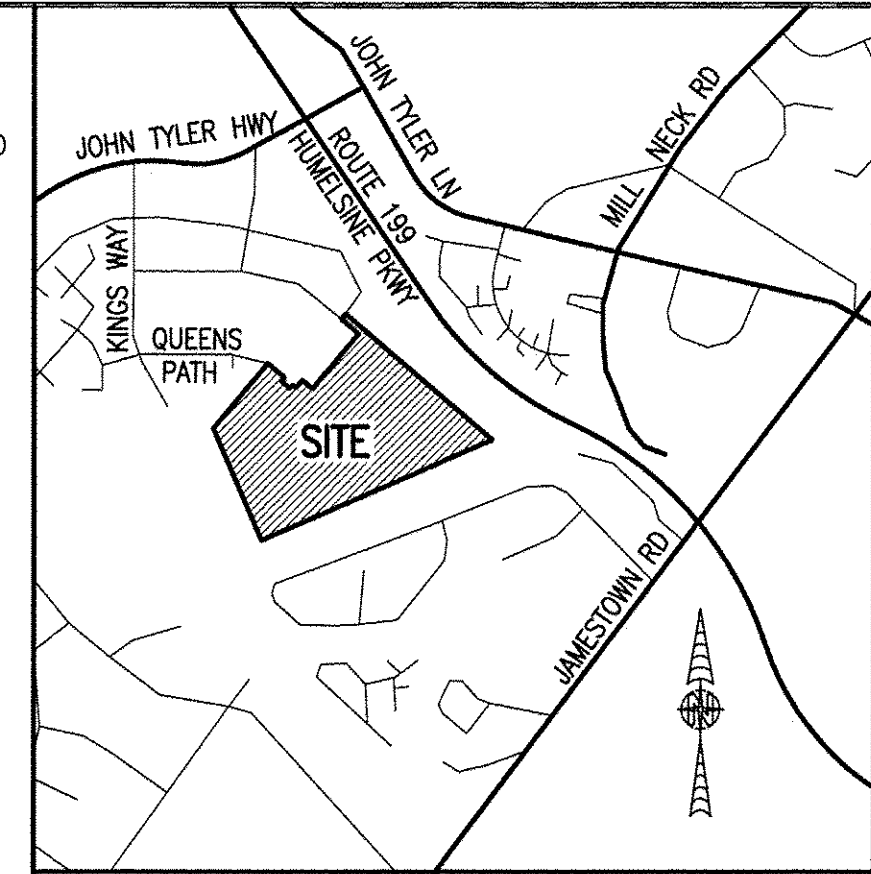
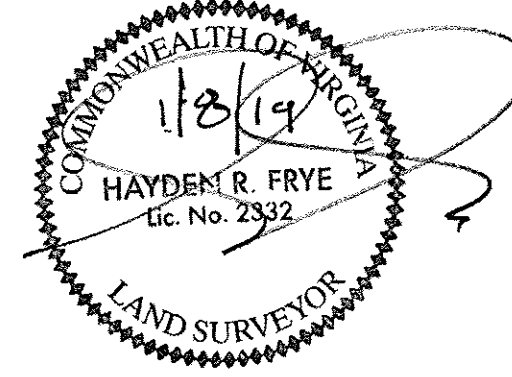


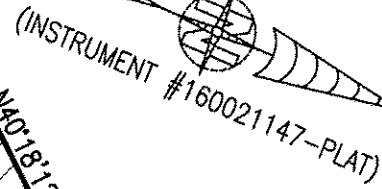
190001140

I HEREBY CERTIFY THAT THIS PLAT IS ACCURATE AND THAT IT COMPLIES WITH THE PROVISIONS OF THE CODE OF VIRGINIA OF 1950 AS AMENDED, § 55-79.58 AND I FURTHER CERTIFY THAT ALL IMPROVEMENTS THEREOF DEPICTED HEREON, PURSUANT TO THE CODE OF VIRGINIA § 55-79.58A, ARE SUBSTANTIALLY COMPLETE.



LOCATION MAP SCALE: 1" = 1000'

NOW OR FORMERLY
WILLIAMSBURG RIVERSIDE
MEDICAL COMPLEX, LLC
GPIN: 481220022
(INST. #070031326)
(P.B. 67, P. 37)



NOW OR FORMERLY
UNIVERSITY SQUARE ASSOCIATES
PARCEL 23
WILLIAMSBURG CROSSING
GPIN: 481220023
(INST. #130028135)
(P.B. 71, P. 30)

NOW OR FORMERLY
CSFB 2002-CKS4
TYLER HIGHWAY, LLC
PARCEL 30
WILLIAMSBURG CROSSING
GPIN: 481220030
(INST. #120018619)
(P.B. 79, P. 74)

NOW OR FORMERLY
CSFB 2002-CKS4
TYLER HIGHWAY, LLC
PARCEL 2
WILLIAMSBURG CROSSING
GPIN: 481220002
(INST. #120018619)
(P.B. 75, P. 92)

NOW OR FORMERLY
Z-CHICKEN HOLDINGS, LLC
PARCEL 24
WILLIAMSBURG CROSSING
GPIN: 481220024
(INST. #10005730)

NOW OR FORMERLY
UNIVERSITY SQUARE ASSOCIATES
PARCEL 25
WILLIAMSBURG CROSSING
GPIN: 481220025
(D.B. 357, P. 125)
(INST. #990026846)
(INST. #150010679)

NOW OR FORMERLY
UNIVERSITY SQUARE ASSOCIATES
PARCEL 26
WILLIAMSBURG CROSSING
GPIN: 481220026
(D.B. 357, P. 125)
(INST. #990026846)
(INST. #150010679)

NOW OR FORMERLY
UNIVERSITY SQUARE ASSOCIATES
PARCEL 27
WILLIAMSBURG CROSSING
GPIN: 481220027
(D.B. 357, P. 125)
(INST. #990026846)
(INST. #150010679)

NOW OR FORMERLY
UNIVERSITY SQUARE ASSOCIATES
PARCEL 28
WILLIAMSBURG CROSSING
GPIN: 481220028
(D.B. 357, P. 125)
(INST. #990026846)

AREA TABLE				
PHASE	BLDG#	STATUS/RECORDATION	SQUARE FEET	ACRES
1	N/A	INSTR.#170011679	268,468	6.163
6	6	INSTR.#180018358	24,875	0.571
7	7	INSTR.#180014663	28,822	0.662
8	8	INSTR.#180010369	24,539	0.563
9	9	INSTR.#180003694	25,978	0.596
10	10	INSTR.#170023466	25,806	0.592
12	12	INSTR.#180016847	4,949	0.114
13	13	INSTR.#180010007	4,512	0.104
14	14	INSTR.#180009579	6,462	0.148
17	17	SUBSTANTIALLY COMPLETE	4,467	0.103
18	18	INSTR.#180019704	5,273	0.121
19	19	INSTR.#180019705	5,367	0.123
20	20	INSTR.#180016210	4,465	0.103
21	21	INSTR.#180016209	4,465	0.103
22	22	INSTR.#180016208	4,892	0.112
23	23	INSTR.#180001768	5,014	0.115
24	24	INSTR.#180005480	4,464	0.102
25	25	INSTR.#180001779	4,466	0.103
26	26	INSTR.#170021156	4,465	0.102
27	27	INSTR.#170021157	4,944	0.114
28	28	INSTR.#180001781	4,936	0.113
29	29	NOT YET RECORDED	10,569	0.243
53	N/A	INSTR.#180014662	49,886	1.145
REMAINS OF ADDITIONAL LAND A-1			57,956	1.330
ADDITIONAL LAND A-2			12,308	0.283
ADDITIONAL LAND A-4			43,699	1.003
ADDITIONAL LAND A-5			48,588	1.115
ADDITIONAL LAND A-6			23,122	0.531
ADDITIONAL LAND A-7			98,872	2.270
TOTAL: NEW PARCEL 29			816,629	18.747

LEGAL DESCRIPTION

PROPERTY SHOWN HEREON BEING "NEW PARCEL 29" CONTAINING 18.747 ACRES AS SHOWN ON "PLAT OF LOT LINE EXTINGUISHMENT BEING PARCELS 20 AND 29 OF WILLIAMSBURG CROSSING" PREPARED BY AES CONSULTING ENGINEERS, DATED 10-24-16 AND RECORDED AS INSTRUMENT NO. 160021147.

NOTES:

- PHASE 17 BUILDING 17 IS SUBSTANTIALLY COMPLETE.
- EASEMENTS AND BUILDING LINES SHOWN HEREON PER THE FOLLOWING:
 - ALTA SURVEY BY AES CONSULTING ENGINEERS, DATED 3-23-15
 - PLAT BY AES CONSULTING ENGINEERS, DATED 10-24-16, INST.#160021147
 - PLAN OF DEVELOPMENT BY AES CONSULTING ENGINEERS, DATED 9-8-16

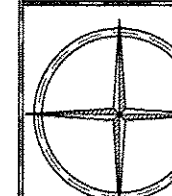
5 Large/Small Plat(s) Recorded
herewith as # 190001140

City of Williamsburg & County of James City
Circuit Court: This PLAT was recorded on
Jan 28, 2019
at 3:26 AM/PM, PB PG
Document # 190001140
MONA A. FOLEY, CLERK
Mona A. Foley, Clerk

THIS SHEET: OVERALL SITE LAYOUT AND AREAS

PHASE 17
CONDOMINIUM PLAT AND PLAN
OF
THE PROMENADE
AT
JOHN TYLER
A CONDOMINIUM
JAMES CITY COUNTY, VIRGINIA

Job# 160921



Hayden Frye and Associates, Inc.
Land Surveyors

333 KELLAM ROAD, SUITE 200
VIRGINIA BEACH, VA, 23462
PH: (757) 491-7228 FX: (757) 491-7229

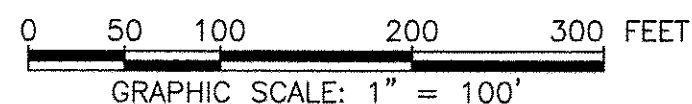
DATE: JANUARY 8, 2019

SCALE: 1"=100'

SHEET 1 OF 5 THIS PHASE

SHEET INDEX:

- SHEET 1 OF 2: OVERALL SITE LAYOUT AND AREAS
- SHEET 2 OF 2: PROPERTY DATA, EASEMENTS, CURVE AND LINE TABLE
- SHEET 3 OF 5: BUILDING DETAIL
- SHEET 4 OF 5: FOUNDATION PLAN AND SECTION
- SHEET 5 OF 5: FLOOR PLANS



SEE SHEET 2 FOR PROPERTY DATA, EASEMENTS, CURVE AND LINE TABLE
SEE SHEET 3 FOR BUILDING DETAIL

JCC Subdivision Agent *EGL*
Approval Not Required

- INDICATES SUBMITTED LAND
- INDICATES PREVIOUSLY SUBMITTED LAND
- INDICATES ADDITIONAL LAND

WINSTON TERRACE SUBDIVISION
SECTION II
(P.B. 18, P. 20)

WINSTON TERRACE SUBDIVISION
SECTION I
(P.B. 17, P. 11)

LOT 18
LOT 17
LOT 16
LOT 15
LOT 14
LOT 13
LOT 12
LOT 11
LOT 10
LOT 9
LOT 8
LOT 7
LOT 6
LOT 5

