

190000917

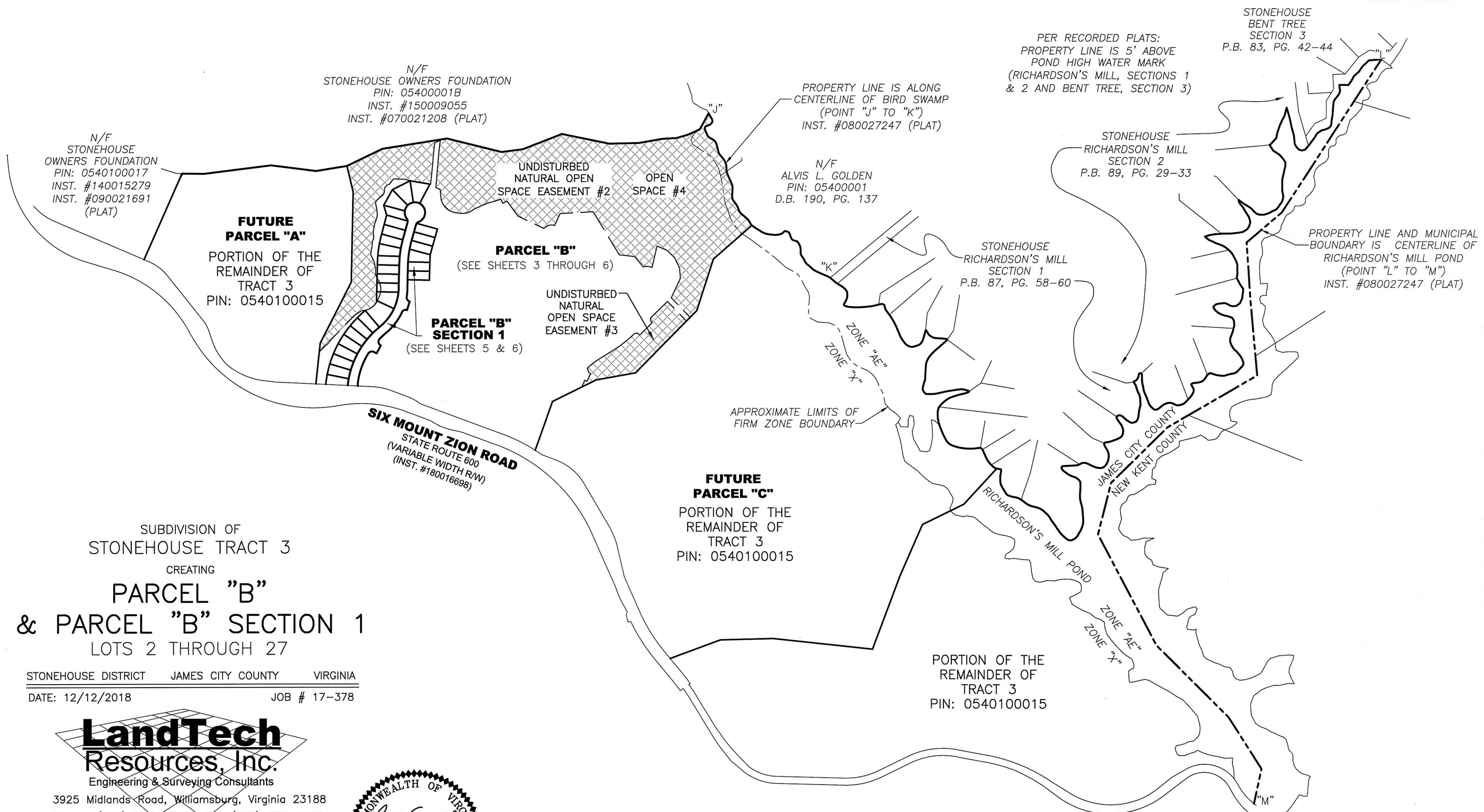
7 Large/Small Plat(s) Recorded  
herewith as # 190000917

VA STATE PLANE  
SOUTH ZONE  
(NAD 83)

# STONEHOUSE TRACT 3

PIN: 0540100015

City of Williamsburg & County of James City  
Circuit Court: This PLAT was recorded on  
22 January 2019  
at 2:42 AM/PM, PB — PG —  
Document # 190000917  
MONA A. FOLEY, CLERK  
*Mona A. Foley*, Clerk



SUBDIVISION OF  
STONEHOUSE TRACT 3  
CREATING  
**PARCEL "B"**  
& **PARCEL "B" SECTION 1**  
LOTS 2 THROUGH 27

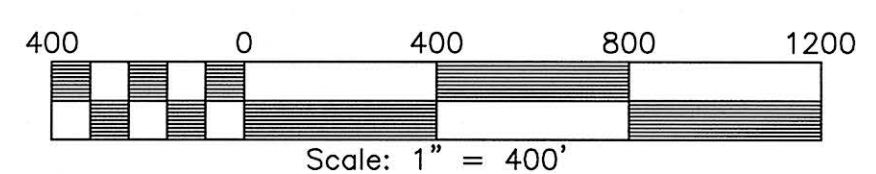
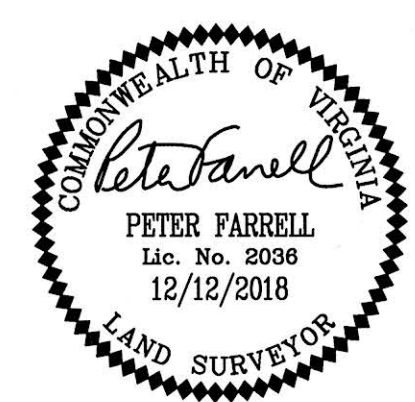
STONEHOUSE DISTRICT JAMES CITY COUNTY VIRGINIA  
DATE: 12/12/2018 JOB # 17-378



Engineering & Surveying Consultants  
3925 Midlands Road, Williamsburg, Virginia 23188  
Phone: (757) 565-1677 Fax: (757) 565-0782  
web: landtechresources.com

SHEET 2 OF 7

JCC-S-0004-2017



**NOTE:**  
THIS PLAT CREATES 29.392 ACRES OF OPEN SPACE #4. ADDITIONAL AREAS OF OPEN SPACE #4 FALL WITHIN PARCEL "B" FUTURE DEVELOPMENT AREA AND WILL BE CREATED BY PLATTING OF FUTURE SUBDIVISION SECTIONS OF PARCEL "B"