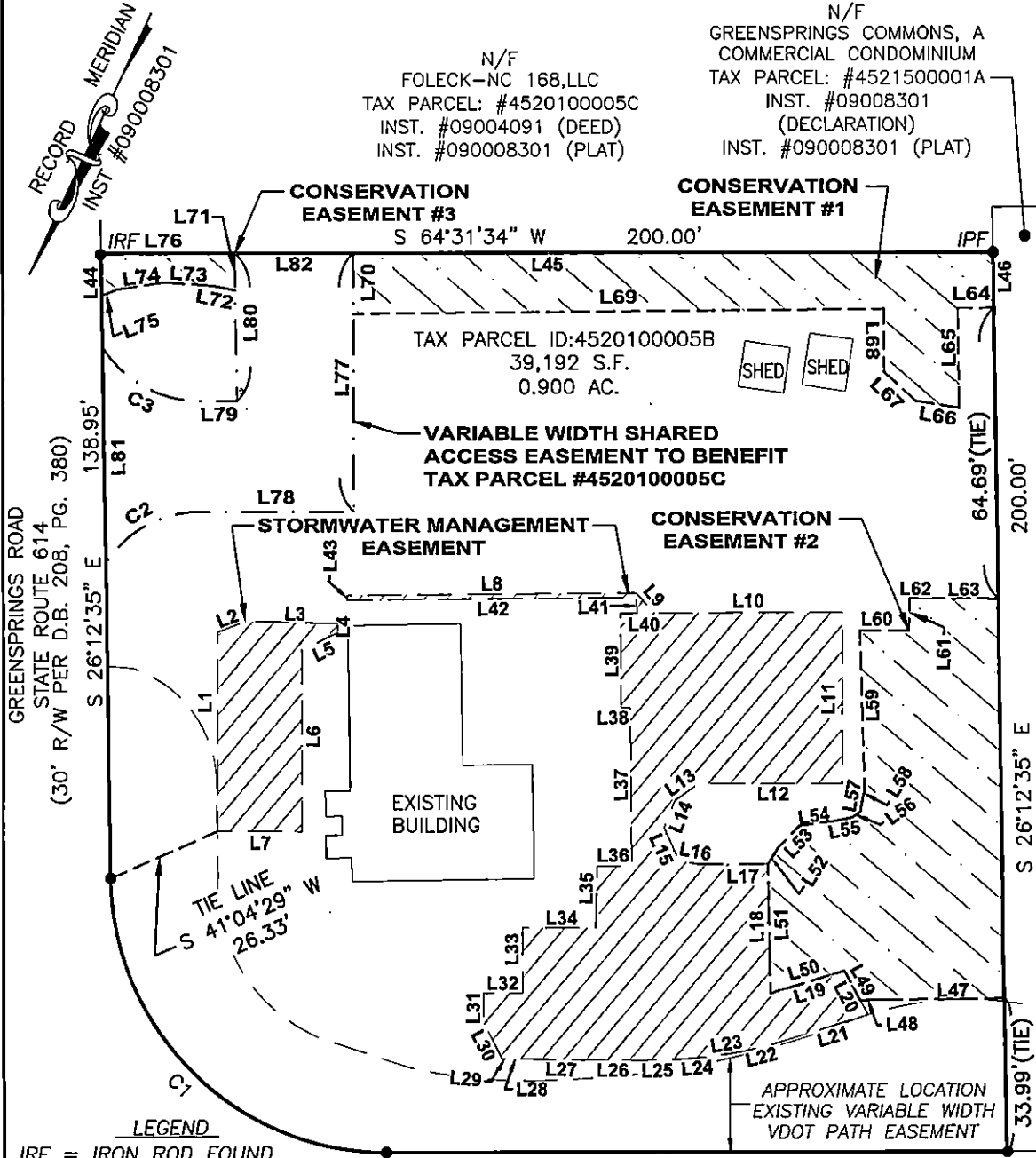


GENERAL NOTES

- 1) THIS PLAT WAS PRODUCED WITHOUT THE BENEFIT OF A TITLE REPORT AND REFLECTS ONLY THOSE ENCUMBRANCES, EASEMENTS AND SETBACKS AS SHOWN IN D.B. 208, PG. 380.
- 2) CONSERVATION EASEMENT SHOWN HEREON HEREBY DEDICATED TO JAMES CITY COUNTY.
- 3) STORMWATER MANAGEMENT EASEMENTS SHOWN HEREON TO BE PRIVATE.

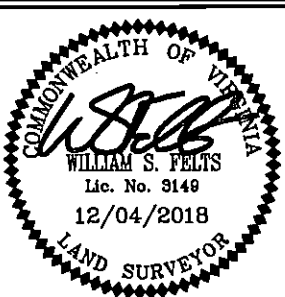


LEGEND
 IRF = IRON ROD FOUND
 IPF = IRON PIPE FOUND

ADDRESS: 3449 JOHN TYLER HIGHWAY, JAMES CITY COUNTY, VIRGINIA
 JOHN TYLER HIGHWAY, STATE ROUTE 5, (50' R/W PER D.B. 208, PG. 380)

CURVE	ARC LENGTH	RADIUS	DELTA ANGLE	CHORD BEARING	CHORD LENGTH
C1	96.40'	61.88'	89°15'27"	N 70°47'57" W	86.94'

SHEET 1 OF 2



REFERENCES:
 D.B. 208, PG. 380
 REVISED: 12/04/2018
 DATE: 10/16/18
 SCALE: 1"=30'
 JOB# 17-494
 CAD File 17-494.dwg

PLAT SHOWING CONSERVATION, STORMWATER MANAGEMENT, SHARED ACCESS EASEMENTS FOR TAX PARCEL #4520100005B
 JAMES CITY COUNTY VIRGINIA
LandTech Resources, Inc.
 Engineering & Surveying Consultants
 3925 Midlands Road, Williamsburg, Virginia 23188
 Telephone: 757-565-1677 Fax: 757-565-0782
 Web: landtechresources.com

DATE 10/17