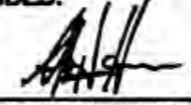


180899

I, AHMED H. HASSAN, A DULY REGISTERED ARCHITECT, DO HEREBY CERTIFY THAT THIS PLAN FOR 2ND STREET SHOPPES CONDOMINIUM COMPLIES WITH THE PROVISIONS OF VIRGINIA CODE ANNOTATE SUBSECTION 55-79.58 (B), AS AMENDED.



AHMED H. HASSAN, AIA

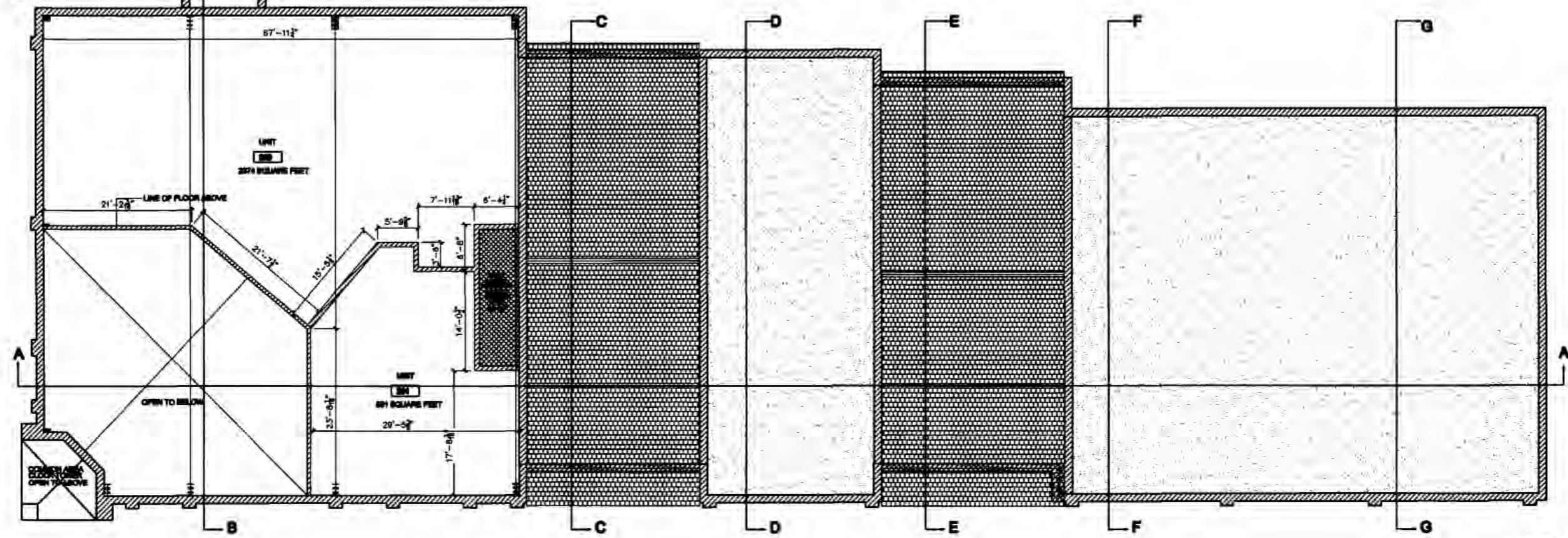
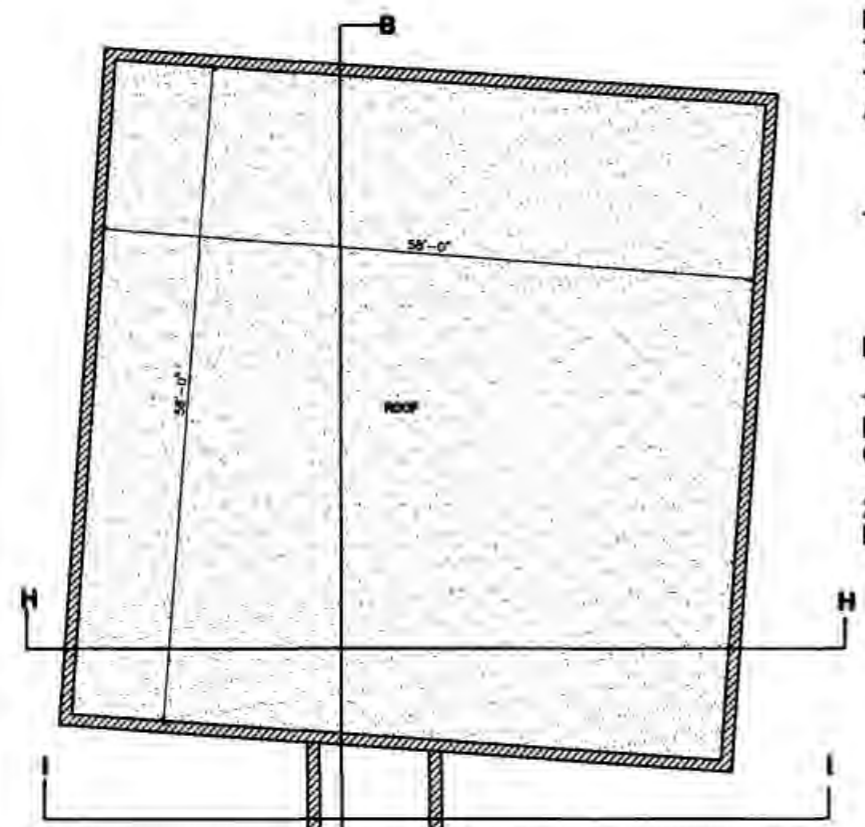
NOVEMBER 1, 2017
DATE



- NOTE:
1. CONDOMINIUM LIMITS ARE MEASURED FROM INTERIOR FACE OF GYPSUM WALL BOARD.
 2. SEE SITE PLAN FOR HORIZONTAL PERIMETER DIMENSIONS

UNIT	AREA	NOTES
B100	3,364 SQUARE FEET	
100	3,364 SQUARE FEET	
101	4,541 SQUARE FEET	INCLUDES CONNECTION TO CONDO 100
101.B	189 SQUARE FEET	COMMON AREA STAIR TO SECOND LEVEL
102	1,472 SQUARE FEET	
103	1,426 SQUARE FEET	
104	1,404 SQUARE FEET	
105	1,423 SQUARE FEET	
106	2,394 SQUARE FEET	
200	2,374 SQUARE FEET	
201	861 SQUARE FEET	

B UNIT AREA CONDOMINIUM LIMITS
SCALE: NOT TO SCALE



A SECOND FLOOR CONDOMINIUM PLAN
SCALE: 1/4" = 1'-0"
2 Large & 6 Large/Small Plat(s) Recorded
herewith as # 180899

HATCH KEY

[Hatched Box]	UNIT
[Dotted Box]	COMMON BALANCE
[Cross-hatched Box]	LIMITED COMMON BALANCE

City of Williamsburg & County of James City
Circuit Court: This PLAT was recorded on
Feb. 1, 2018
at 3:26 AM/PM, PB — PG —
Document # 180899
MONA A. FOLEY, CLERK
Monica Foley Clerk

112 DINES
WILLIAMSBURG VIRGINIA 23106
PHONE: 757-208-0577
WWW.AH2ARCHITECTURE.COM

architecture
AH2

CONDOMINIUM DOCUMENTS
SECOND FLOOR PLAN
THE SHOPS AT SECOND STREET
911 SECOND STREET
WILLIAMSBURG VIRGINIA 23106

DATE: JULY 10, 2017
SCALE: AS INDICATED
PAGE: 2