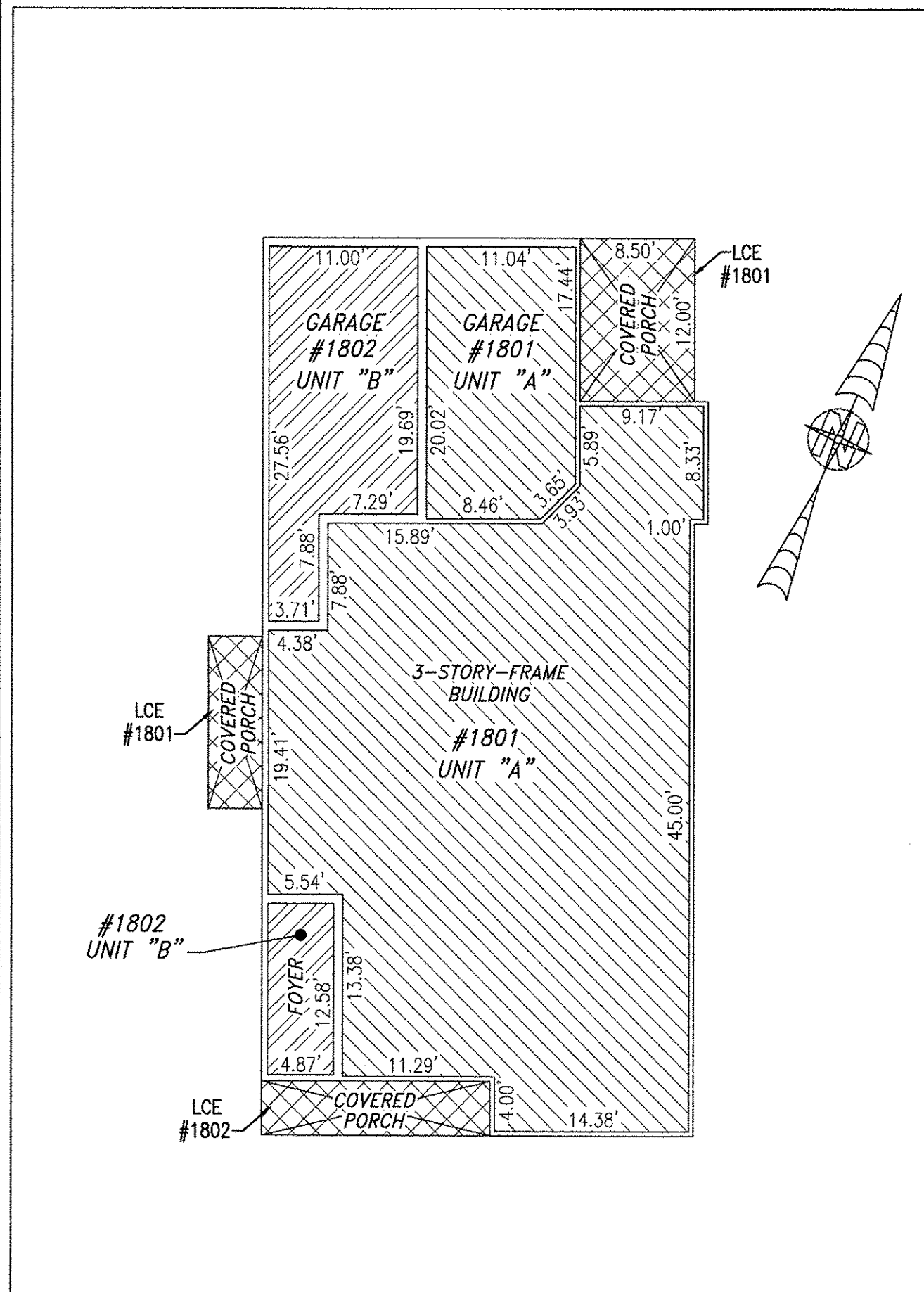
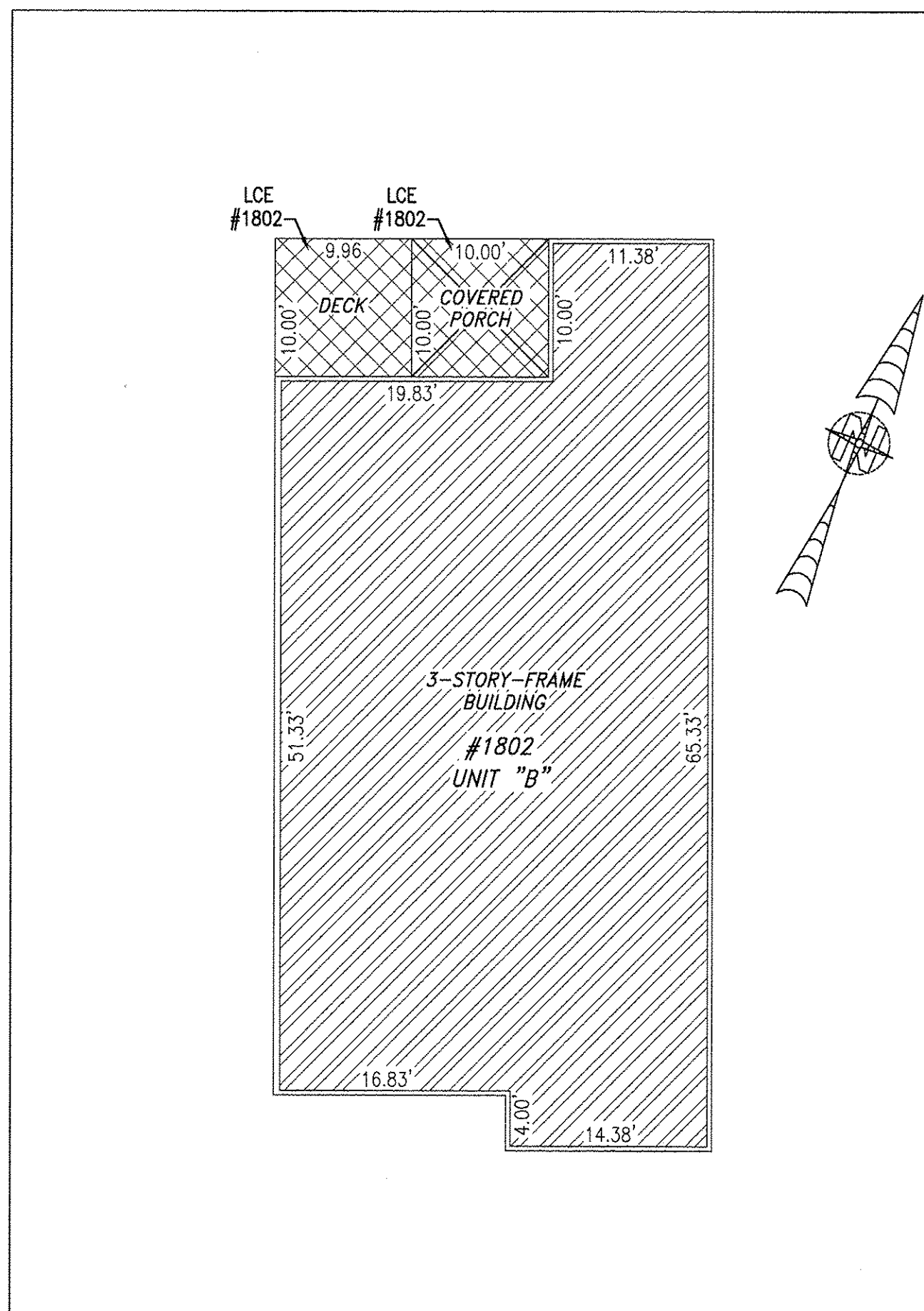


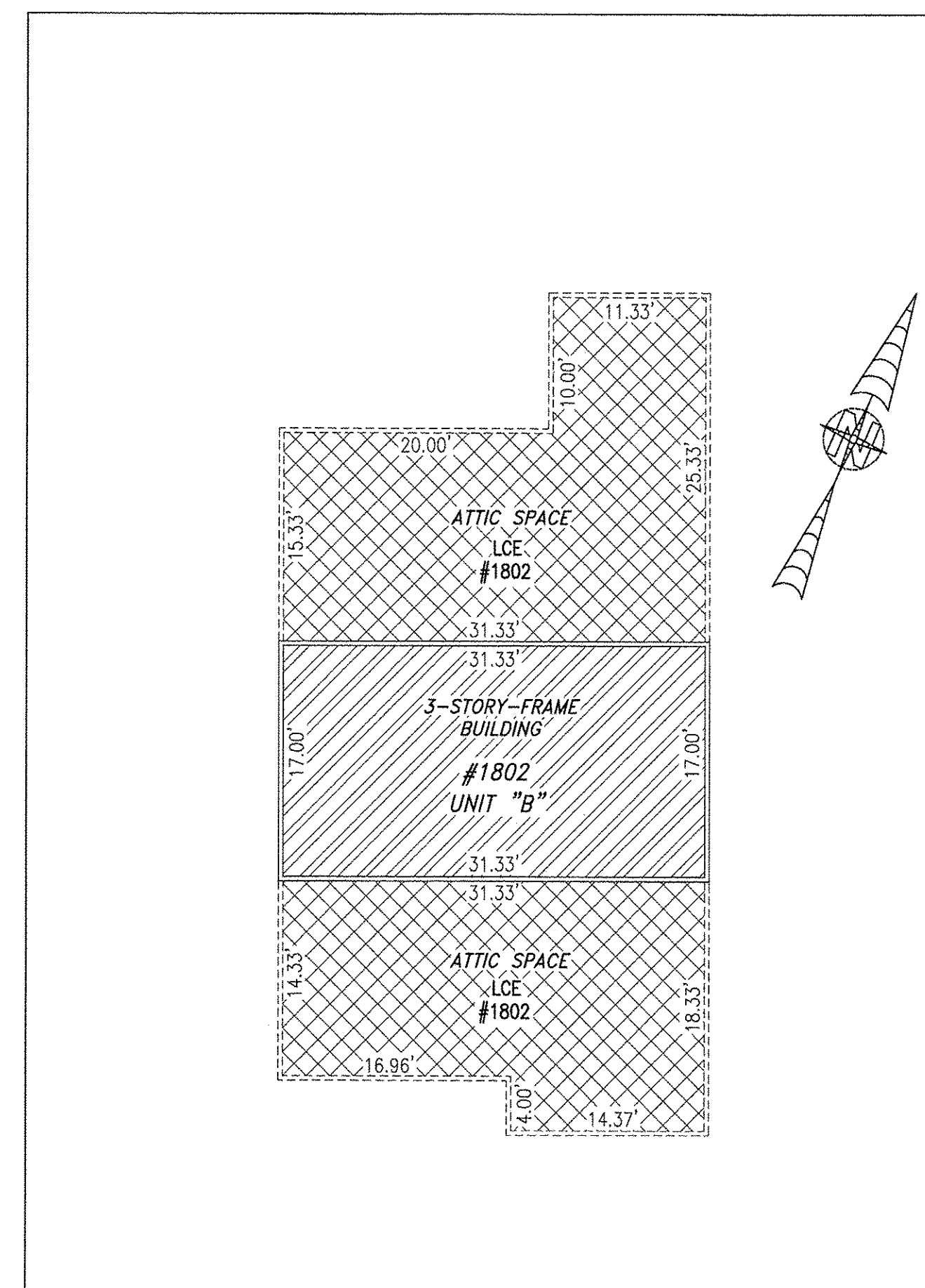
BUILDING 18 (DUPLEX)



FIRST FLOOR



SECOND FLOOR



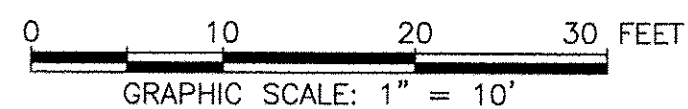
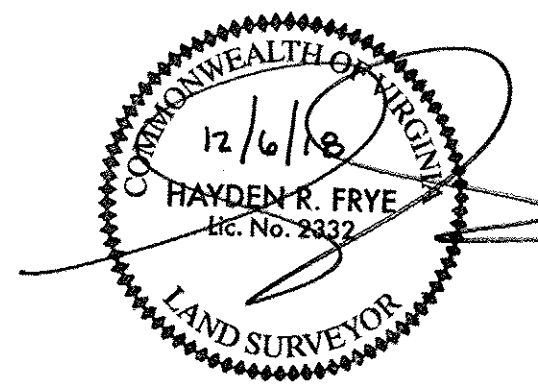
THIRD FLOOR

UNIT ID	UNIT DESCRIPTION	UNIT ADDRESS
A	-INDICATES AREA OF UNIT 1801	#1801 PROMENADE LANE
B	-INDICATES AREA OF UNIT 1802	#1802 PROMENADE LANE
	-INDICATES COMMON ELEMENT	
	-INDICATES LIMITED COMMON ELEMENT	

5 Large/Small Plat(s) Recorded
herewith as # 180019704

I HEREBY CERTIFY THAT THIS PLAN IS ACCURATE AND THAT IT COMPLIES WITH THE PROVISIONS OF THE CODE OF VIRGINIA OF 1950 AS AMENDED, § 55-79.58 AND I FURTHER CERTIFY THAT ALL UNITS THEREOF DEPICTED HEREON, PURSUANT TO THE CODE OF VIRGINIA § 55-79.58B, ARE SUBSTANTIALLY COMPLETE.

City of Williamsburg & County of James City
Circuit Court: This PLAT was recorded on
12-11-2018
at 1:08 AM/PM PB PG
Document # 180019704
MONA A. FOLEY, CLERK
Mon A. Foley, Clerk

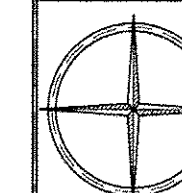


JCC Subdivision Agent Approval Not Required *EB*

THIS SHEET: FLOOR PLANS

PHASE 18
CONDOMINIUM PLAT AND PLAN
OF
THE PROMENADE
AT
JOHN TYLER
A CONDOMINIUM
JAMES CITY COUNTY, VIRGINIA

Job# 160921



Hayden Frye and Associates, Inc.

Land Surveyors

333 KELLAM ROAD, SUITE 200
VIRGINIA BEACH, VA., 23462
PH: (757) 491-7228 FX: (757) 491-7229

DATE: DECEMBER 5, 2018

SCALE: 1"=10'

SHEET 5 OF 5 THIS PHASE