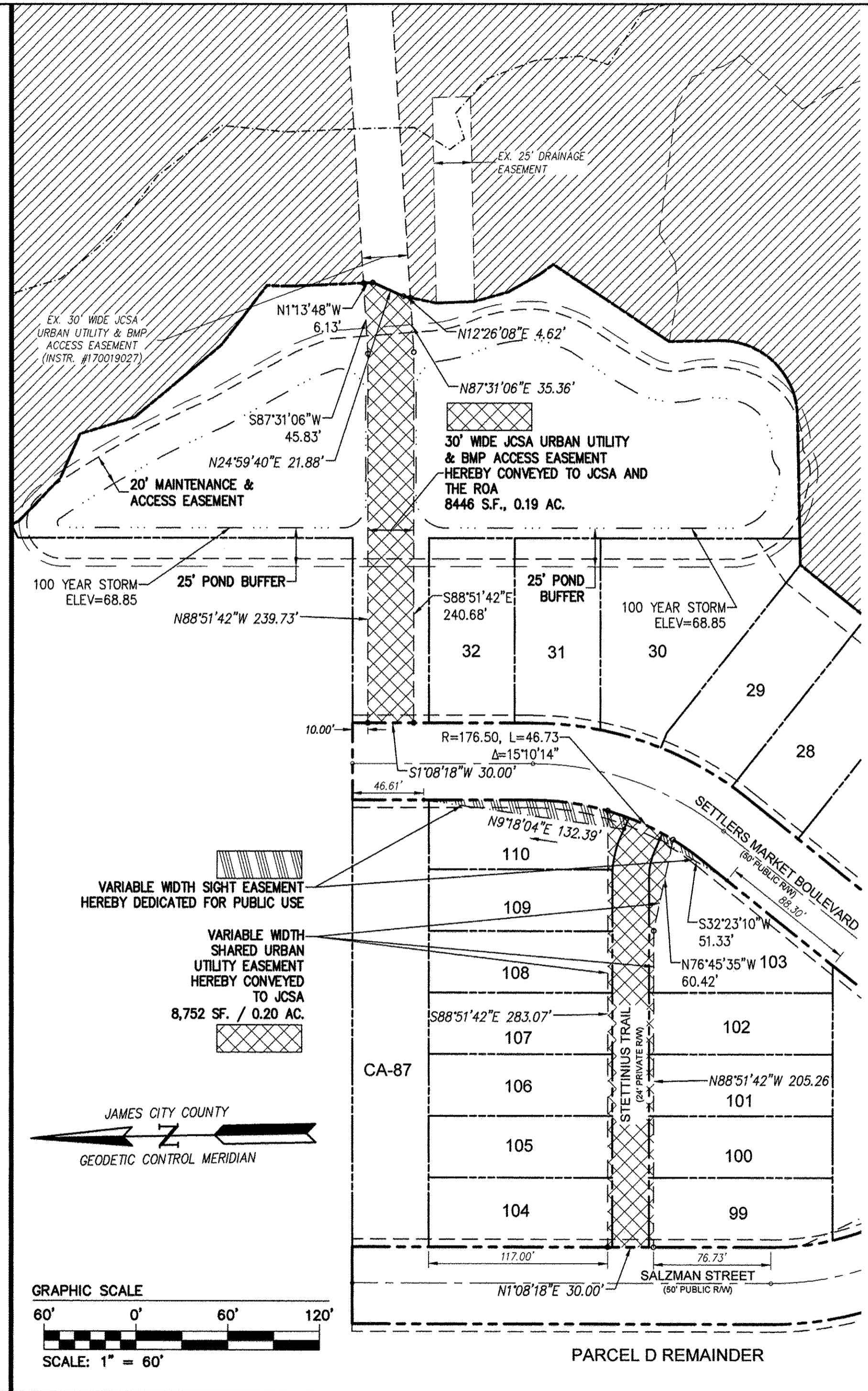


180019086

LINE TABLE			LINE TABLE		
LINE	BEARING	LENGTH	LINE	BEARING	LENGTH
L1	S25°08'28"W	36.73'	L34	S88°18'20"E	44.43'
L2	S6°40'59"W	29.05'	L35	N78°54'32"E	22.13'
L3	S1°40'07"E	27.38'	L36	N58°24'33"E	13.42'
L4	S8°37'17"E	24.18'	L37	N50°41'41"E	14.60'
L5	S23°59'06"E	29.36'	L38	N88°38'04"E	109.96'
L6	S40°30'49"E	28.22'	L39	S26°55'28"E	46.73'
L7	S67°07'10"W	5.17'	L40	S38°53'27"E	31.15'
L8	N77°46'32"W	17.53'	L41	S47°51'06"E	51.12'
L9	N89°42'36"W	10.87'	L42	S30°04'07"E	36.92'
L10	S78°13'16"W	10.15'	L43	S40°27'02"E	18.18'
L11	S65°47'27"W	11.50'	L44	S22°38'12"E	40.76'
L12	S52°19'42"W	11.94'	L45	S44°48'57"E	38.77'
L13	S45°28'11"W	32.11'	L46	S64°34'11"E	31.73'
L14	S45°28'11"W	4.93'	L47	S15°47'44"E	37.30'
L15	S33°11'02"W	8.94'	L48	S38°28'48"E	73.61'
L16	S23°18'35"W	10.99'	L49	S51°14'00"E	48.89'
L17	S11°18'12"W	9.93'	L50	S4°01'07"W	8.92'
L18	S0°53'36"W	8.22'	L51	S0°55'31"W	7.53'
L19	S8°47'07"E	8.66'	L52	S1°13'48"E	52.85'
L20	S20°44'12"E	12.16'	L53	S24°59'40"W	21.88'
L21	S31°33'07"E	6.68'	L54	S12°26'08"W	21.88'
L22	S39°57'42"E	8.02'	L55	S1°01'33"E	25.00'
L23	S24°51'19"W	25.20'	L56	S14°45'51"E	22.84'
L24	S15°58'37"W	15.43'	L57	S27°52'38"E	22.84'
L25	S7°05'55"W	40.98'	L58	S34°26'01"E	11.84'
L26	S1°28'13"W	9.81'	L59	S34°35'18"W	90.71'
L27	S10°08'44"E	10.43'	L60	S0°00'00"E	32.85'
L28	S22°32'38"E	11.17'	L61	N39°42'23"E	8.98'
L29	S33°48'17"E	8.45'	L62	S50°17'37"E	5.17'
L30	S43°01'49"E	7.63'	L63	S64°03'57"E	12.56'
L31	S52°41'07"E	9.20'	L64	S64°03'57"E	12.56'
L32	S64°33'19"E	11.48'	L65	N67°06'39"W	10.24'
L33	S79°43'34"E	14.92'			

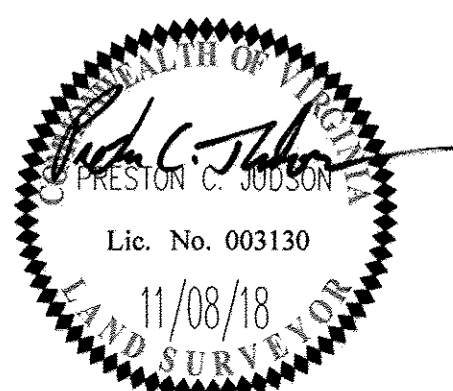
CURVE TABLE						
CURVE #	DELTA	RADIUS	LENGTH	TANGENT	CHORD	CHORD BEARING
C1	90°00'00"	50.00'	78.54'	50.00'	70.71'	S45°00'00"W
C2	49°33'44"	227.50'	196.79'	105.03'	190.71'	S14°55'32"W
C3	89°21'17"	25.00'	38.99'	24.72'	35.16'	N4°58'15"W
C4	50°47'12"	226.50'	200.77'	107.52'	194.26'	S24°15'18"E
C5	51°25'54"	176.50'	158.44'	85.00'	153.17'	S24°34'39"E
C6	13°11'18"	176.50'	40.63'	20.40'	40.54'	S5°27'21"E
C7	38°14'37"	176.50'	117.81'	61.19'	115.63'	S31°10'18"E
C8	90°00'00"	25.00'	39.27'	25.00'	35.36'	N84°42'23"E
C9	38°34'06"	176.50'	118.81'	61.75'	116.58'	N20°25'21"E
C10	9°52'26"	176.50'	30.42'	15.25'	30.38'	N34°46'10"E
C11	7°47'49"	176.50'	24.02'	12.03'	24.00'	N25°56'03"E
C12	20°53'50"	176.50'	64.37'	32.55'	64.02'	N11°35'13"E
C13	24°47'45"	38.00'	16.45'	8.35'	16.32'	N76°27'50"W
C14	24°47'45"	62.00'	26.83'	13.63'	26.62'	N76°27'50"W
C15	3°42'30"	62.00'	4.01'	2.01'	4.01'	N87°00'27"W
C16	21°05'15"	62.00'	22.82'	11.54'	22.69'	N74°36'35"W
C17	38°34'06"	226.50'	152.46'	79.25'	149.60'	S20°25'21"W
C18	11°11'42"	226.50'	44.26'	22.20'	44.19'	N6°44'09"E
C19	10°27'10"	226.50'	41.32'	20.72'	41.26'	N17°33'35"E
C20	13°24'47"	226.50'	53.02'	26.63'	52.90'	N29°29'34"E
C21	3°30'26"	226.50'	13.86'	6.93'	13.86'	N37°57'10"E
C22	49°33'44"	169.50'	146.62'	78.25'	142.09'	S14°55'32"W
C23	18°51'42"	169.50'	55.80'	28.15'	55.55'	S30°16'32"W
C24	30°42'02"	169.50'	90.82'	46.53'	89.74'	S5°29'41"W
C25	27°25'29"	219.50'	105.06'	53.56'	104.06'	S23°34'05"E
C26	25°26'10"	277.50'	123.20'	62.63'	122.19'	S22°34'25"E



5 Large/Small Plat(s) Recorded
herewith as # 180019086

City of Williamsburg & County of James City
Circuit Court: This PLAT was recorded on
10/03/2018
at 10:07 AM/PM, PG
Document # 180019086
MONA A. FOLEY, CLERK
Mona A. Foley Clerk

1	6/8/18	REVISED PER COUNTY COMMENTS	JAG
Rev.	Date	Description	Revised By



5248 Olde Towne Road, Suite 1
Williamsburg, Virginia 23188
Phone: (757) 253-0040
Fax: (757) 220-8994
www.aesva.com

Hampton Roads | Central Virginia | Middle Peninsula

PLAT OF SUBDIVISION
SECTION 8, PARCEL D, PHASE I
NEW TOWN
LOTS 21-32 AND 99-110, CA-84, CA-87 AND CA-88
OWNED BY ABVA DEVELOPMENT, LP
JAMESTOWN DISTRICT JAMES CITY COUNTY VIRGINIA

Project Contacts: PCJ/JAG
Project Number: 6632-08-01
Scale: 1"=60' Date: 04/23/2018
Sheet Number
5 OF 5