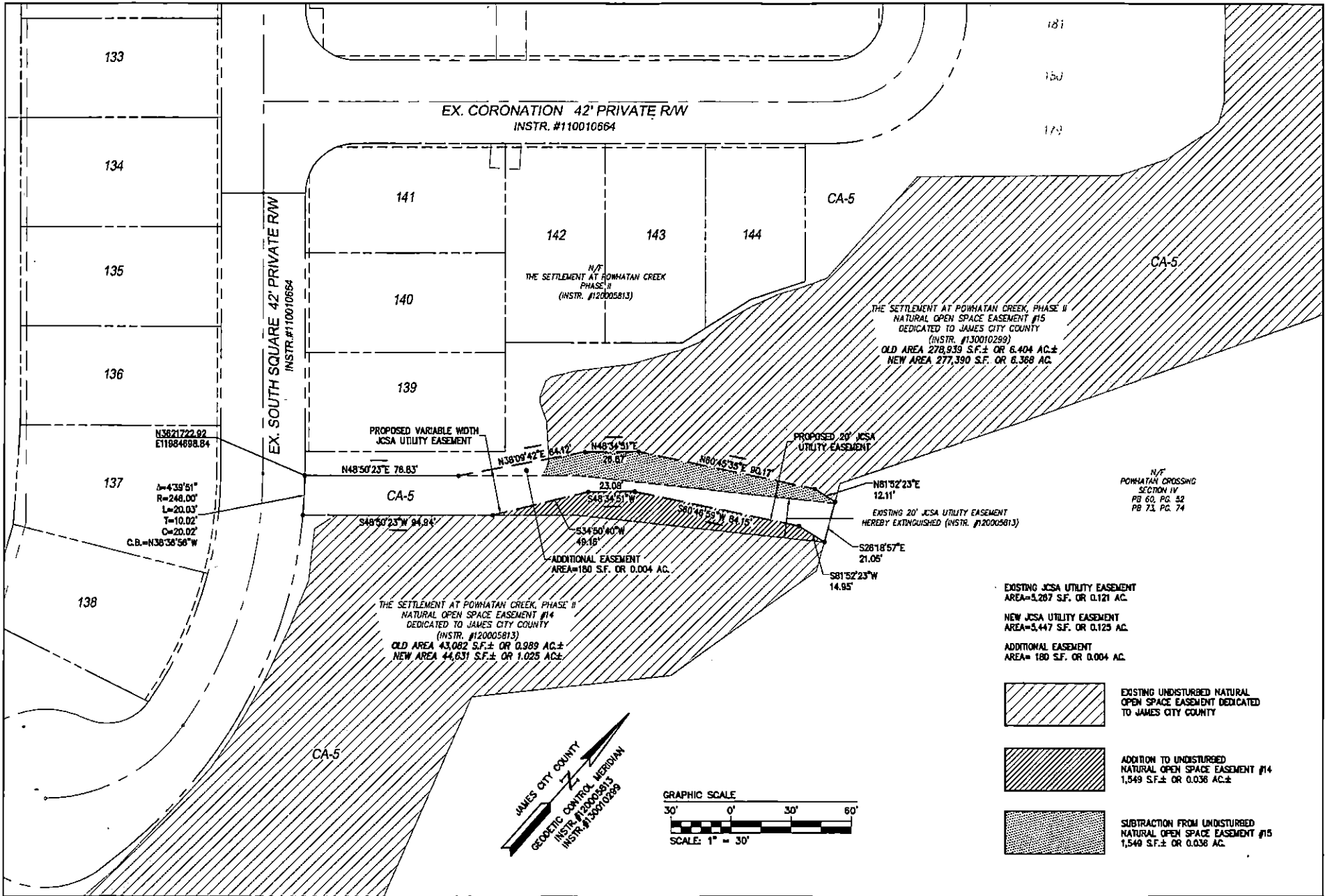
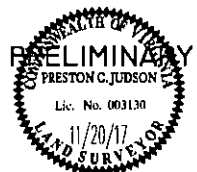


EXHIBIT A



PAGE 5 OF 5

Rev.	Date	Description	Revised By



**AES**  
CONSULTING ENGINEERS

5248 Old Towne Road, Suite 1  
Williamsburg, Virginia 23169  
Phone: (757) 253-0040  
Fax: (757) 220-8984  
www.aesvs.com

Hampton Roads | Central Virginia | Made Peninsula

JCSA UTILITY EASEMENT AND JCC NATURAL OPEN SPACE EASEMENT ADJUSTMENTS

**THE SETTLEMENT AT POWHATAN CREEK PHASE II**

BERKELEY DISTRICT      JAMES CITY COUNTY      VIRGINIA

Project Contacts: PC/ATRS  
Project Number: 9254-08  
Scale: 1"=30'  
Date: 11/20/17  
Sheet Number: 1 of 1