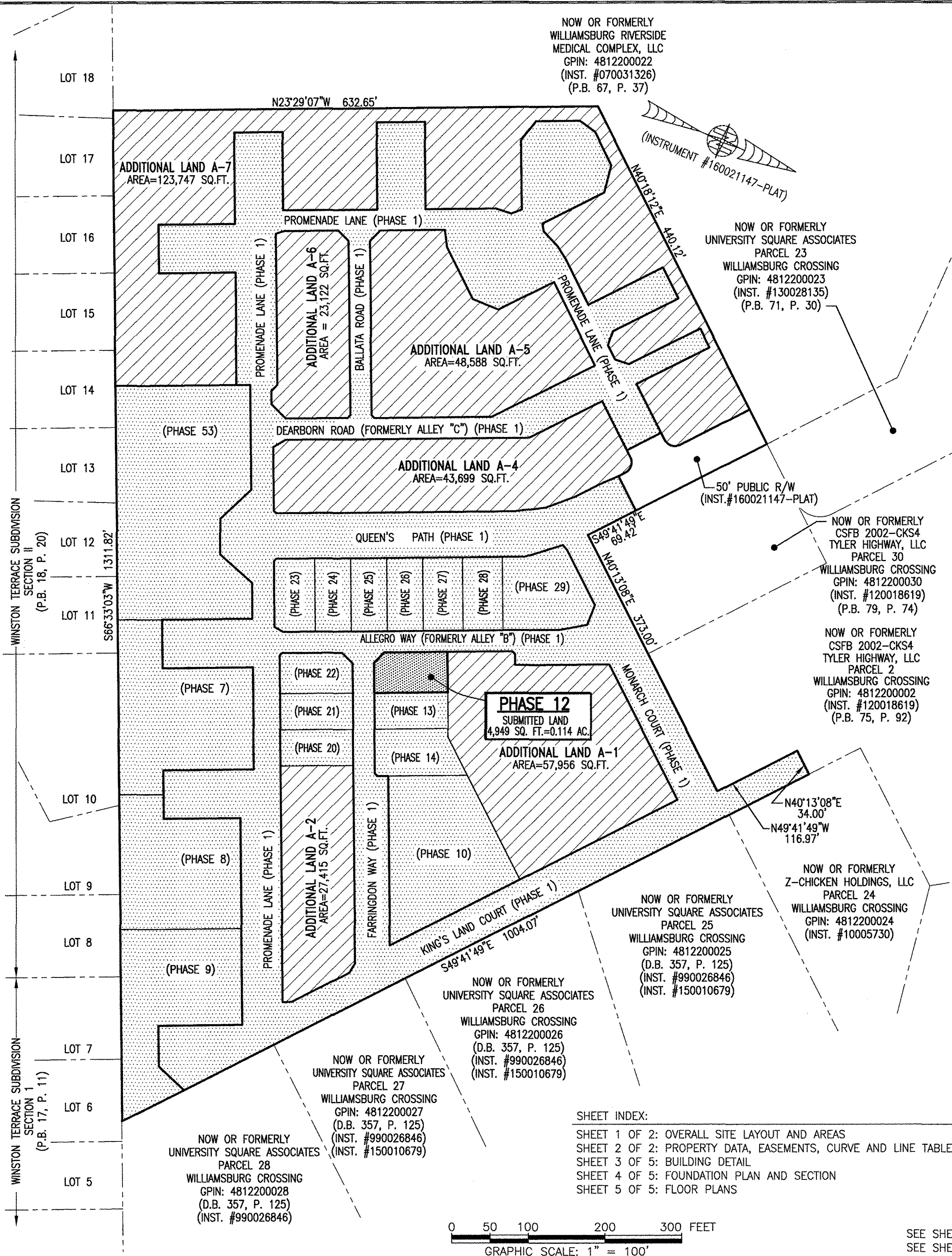
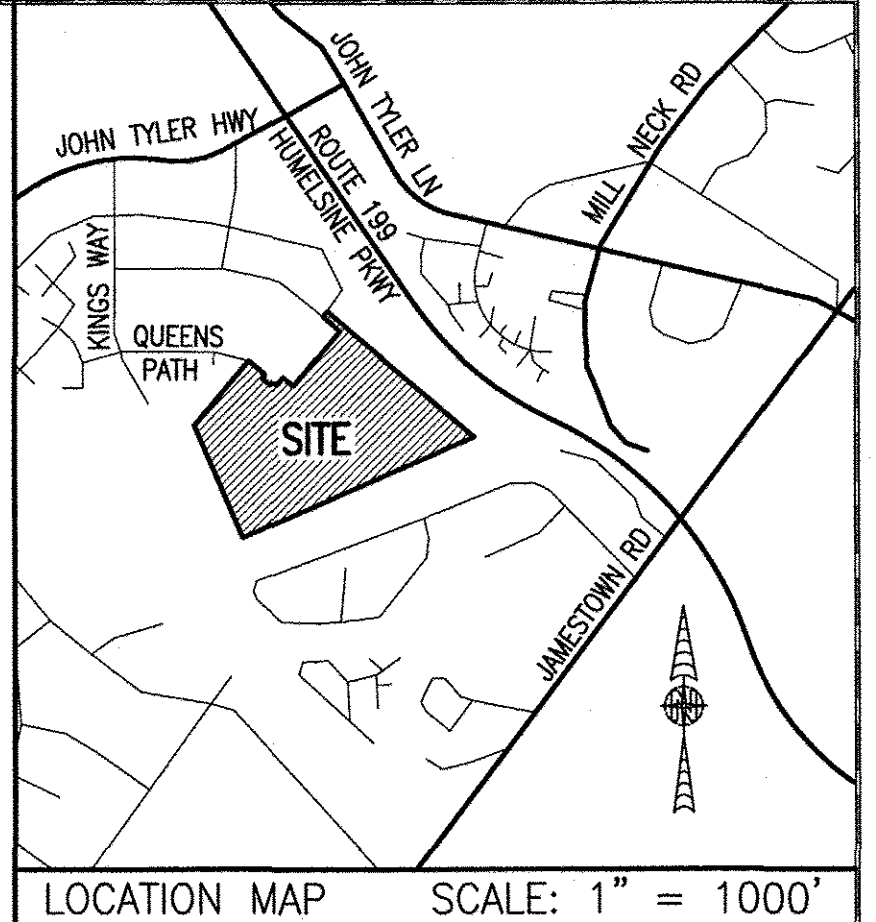
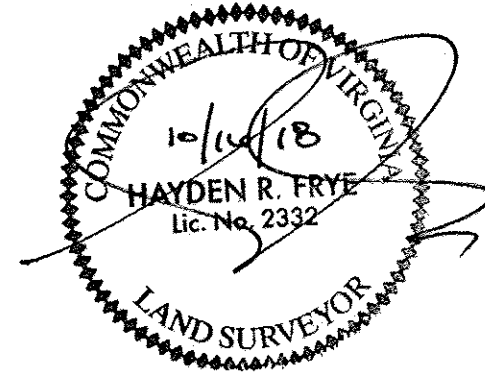


180016847



I HEREBY CERTIFY THAT THIS PLAT IS ACCURATE AND THAT IT COMPLIES WITH THE PROVISIONS OF THE CODE OF VIRGINIA OF 1950 AS AMENDED, § 55-79.58 AND I FURTHER CERTIFY THAT ALL IMPROVEMENTS THEREOF DEPICTED HEREON, PURSUANT TO THE CODE OF VIRGINIA § 55-79.58A, ARE SUBSTANTIALLY COMPLETE.



AREA TABLE				
PHASE	BLDG#	STATUS/RECORDATION	SQUARE FEET	ACRES
1	N/A	INSTR.#170011679	268,468	6.163
7	7	INSTR.#180014663	28,822	0.662
8	8	INSTR.#180010369	24,539	0.563
9	9	INSTR.#180003694	25,978	0.596
10	10	INSTR.#170023466	25,806	0.592
12	12	SUBSTANTIALLY COMPLETE	4,949	0.114
13	13	INSTR.#180010007	4,512	0.104
14	14	INSTR.#180009579	6,462	0.148
20	20	INSTR.#180016210	4,465	0.103
21	21	INSTR.#180016209	4,465	0.103
22	22	INSTR.#180016208	4,892	0.112
23	23	INSTR.#180001768	5,014	0.115
24	24	INSTR.#180005480	4,464	0.102
25	25	INSTR.#180001779	4,466	0.103
26	26	INSTR.#170021156	4,465	0.102
27	27	INSTR.#170021157	4,944	0.114
28	28	INSTR.#180001781	4,936	0.113
29	29	NOT YET RECORDED	10,569	0.243
53	N/A	INSTR.#180014662	49,886	1.145
REMAINS OF ADDITIONAL LAND A-1			57,956	1.330
ADDITIONAL LAND A-2			27,415	0.629
ADDITIONAL LAND A-4			43,699	1.003
ADDITIONAL LAND A-5			48,588	1.115
ADDITIONAL LAND A-6			23,122	0.531
ADDITIONAL LAND A-7			123,747	2.841
TOTAL: NEW PARCEL 29			816,629	18.747

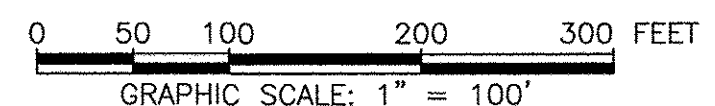
LEGAL DESCRIPTION  
 PROPERTY SHOWN HEREON BEING "NEW PARCEL 29" CONTAINING 18.747 ACRES AS SHOWN ON "PLAT OF LOT LINE EXTINGUISHMENT BEING PARCELS 20 AND 29 OF WILLIAMSBURG CROSSING" PREPARED BY AES CONSULTING ENGINEERS, DATED 10-24-16 AND RECORDED AS INSTRUMENT NO. 160021147.

- NOTES:
- PHASE 12 BUILDING 12 IS SUBSTANTIALLY COMPLETE.
  - EASEMENTS AND BUILDING LINES SHOWN HEREON PER THE FOLLOWING:
    - ALTA SURVEY BY AES CONSULTING ENGINEERS, DATED 3-23-15
    - PLAT BY AES CONSULTING ENGINEERS, DATED 10-24-16, INST.#160021147
    - PLAN OF DEVELOPMENT BY AES CONSULTING ENGINEERS, DATED 9-8-16

5 Large/Small Plat(s) Recorded  
 herewith as # 180016847

City of Williamsburg & County of James City  
 Circuit Court: This PLAT was recorded on  
 Oct 19 2018  
 at 2:31 AM/PM, PB PG  
 Document # 180016847  
 MONA A. FOLEY, CLERK  
 Clerk

SHEET INDEX:  
 SHEET 1 OF 2: OVERALL SITE LAYOUT AND AREAS  
 SHEET 2 OF 2: PROPERTY DATA, EASEMENTS, CURVE AND LINE TABLE  
 SHEET 3 OF 5: BUILDING DETAIL  
 SHEET 4 OF 5: FOUNDATION PLAN AND SECTION  
 SHEET 5 OF 5: FLOOR PLANS



- INDICATES SUBMITTED LAND
- INDICATES PREVIOUSLY SUBMITTED LAND
- INDICATES ADDITIONAL LAND

SEE SHEET 2 FOR PROPERTY DATA, EASEMENTS, CURVE AND LINE TABLE  
 SEE SHEET 3 FOR BUILDING DETAIL

THIS SHEET: OVERALL SITE LAYOUT AND AREAS

**PHASE 12**  
**CONDOMINIUM PLAT AND PLAN**  
 OF  
**THE PROMENADE**  
 AT  
**JOHN TYLER**  
 A CONDOMINIUM  
 JAMES CITY COUNTY, VIRGINIA

Hayden Frye and Associates, Inc.  
**Land Surveyors**  
 333 KELLAM ROAD, SUITE 200  
 VIRGINIA BEACH, VA, 23462  
 PH: (757) 491-7228 FX: (757) 491-7229

DATE: OCTOBER 15, 2018  
 SCALE: 1"=100'  
 SHEET 1 OF 5 THIS PHASE