

180015007


ALTA/NSPS LAND TITLE SURVEY OF THE LAND OF RIVERVIEW

STONEHOUSE MAGISTERIAL DISTRICT
JAMES CITY COUNTY, VIRGINIA

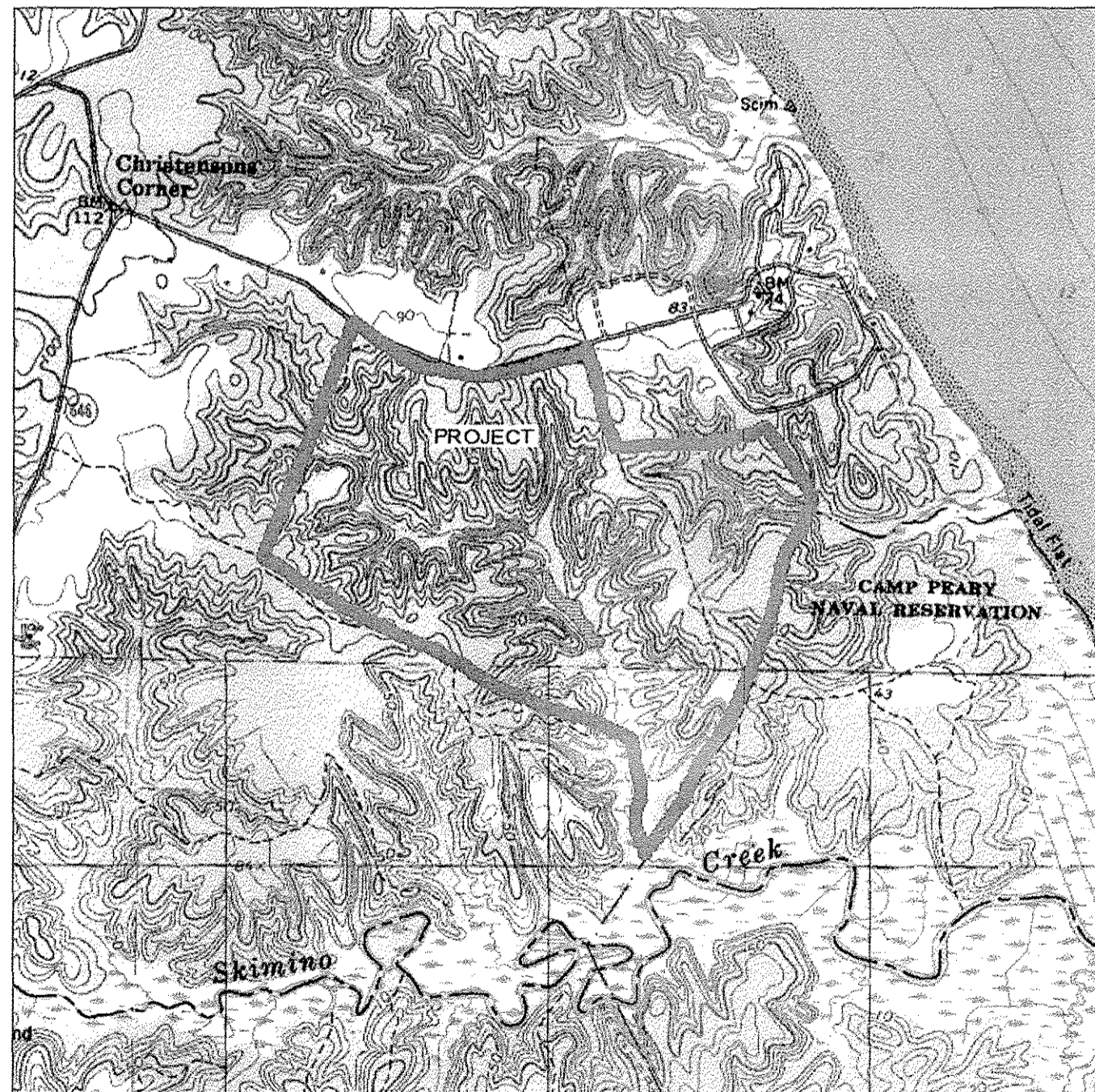
TO: LYNN HAGGARD, B. P. STIEFFEN WOODLANDS, LLC, DENNIS R. STIEFFEN, BRIDGE TRUST TITLE, THE TRUST FOR PUBLIC LAND, THE COMMONWEALTH OF VIRGINIA, AND THE US DEPARTMENT OF THE NAVY:

THIS IS TO CERTIFY THAT THIS MAP OR PLAT AND THE SURVEY ON WHICH IT IS BASED WERE MADE IN ACCORDANCE WITH THE 2016 MINIMUM STANDARD DETAIL REQUIREMENTS FOR ALTA/NSPS LAND TITLE SURVEYS, JOINTLY ESTABLISHED AND ADOPTED BY ALTA AND NSPS, AND INCLUDES ITEMS 1, 3, 4, 7(A), 13, 14, 15, AND 21 OF TABLE A THEREOF. THE FIELD WORK WAS COMPLETED ON AUGUST 22, 2018.

DATE OF PLAT OR MAP: SEPTEMBER 10, 2018

PHILLIP L. KEYSER 

LOCATION MAP
SCALE: 1"=2000'



GENERAL NOTES

1) THIS SURVEY DOES NOT REFLECT TOPOGRAPHIC FEATURES AND \ OR SOIL STUDIES.

2) THIS SURVEY PREPARED WITH THE BENEFIT OF TITLE REPORT.
FIDELITY NATIONAL TITLE INSURANCE COMPANY
FILE NO. 091054357

3) PROPERTY REFERENCES: DB 307 PG. 528

4) PROPERTY IS STANDING IN THE NAME OF:
DENNIS R. STIEFFEN, ANN LYNN COLEMAN STIEFFEN, LYNN HAGGARD AS TRUSTEE, B. P. STIEFFEN WOODLANDS, L.L.C.,

NOTE: ALL LINES DETERMINED BY PREVIOUS SURVEYS, FOUND POINTS, AND DEED DESCRIPTIONS.

SEE MAP NUMBERS 51095C0064D, 51095C0068D, 51095C0127D, AND 51095C131D, FLOOD INSURANCE RATE MAPS, JAMES CITY COUNTY, VIRGINIA FOR FLOOD INFORMATION.


LINE BETWEEN LIMITED USE AREA AND PARK DEVELOPMENT AREA WAS DRAWN BASED ON INSTRUCTIONS PROVIDED ME BY THE TRUST FOR PUBLIC LAND.

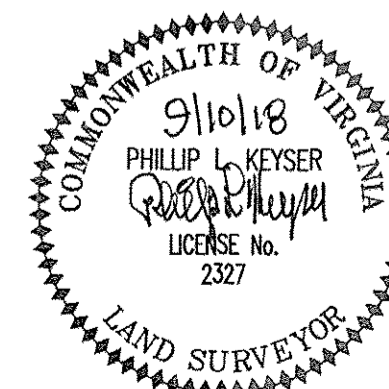
LEGEND

- INDICATES FOUND PIPE UNLESS OTHERWISE NOTED
- INDICATES PIN SET UNLESS OTHERWISE NOTED
- ☆ INDICATES FOUND ROD UNLESS OTHERWISE NOTED
- INDICATES FOUND CONCRETE MONUMENT UNLESS OTHERWISE NOTED

TOTAL AREA - 400.797 AC.

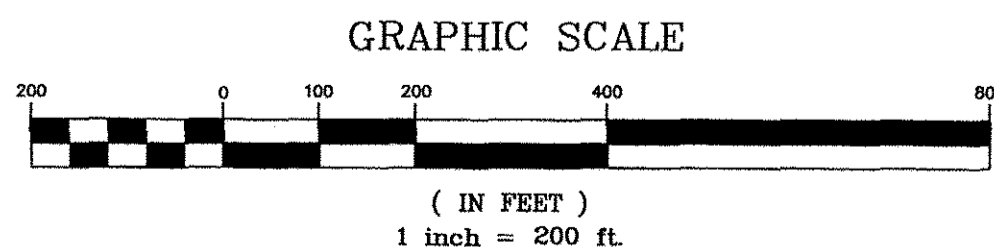
5 Large/Small Plat(s) Recorded
herewith as # 180015007


City of Williamsburg & County of James City
Circuit Court: This PLAT was recorded on
Sept. 21, 2018
at 2:15 AM/PM, PB PG
Document # 180015007
MONA A. FOLEY, CLERK
 Clerk



Legal Description

Beginning at a point in the center of Virginia State Highway 606, Riverview Road, a corner with the land of Joanne Kellum; thence, along the center of Riverview Road, S70°27'03"E, 187.60' to a point; thence, continuing with the center of Riverview Road along a curve to the right with a radius of 1361.31', an arc length of 354.63', a chord bearing of S62°59'16"E, a chord distance of 353.62' to a point; thence, continuing with the center of Riverview Road, S55°31'30"E, 343.36' to a point; thence, continuing with the center of Riverview Road, S57°15'08"E, 308.78' to a point; thence, continuing with the center of Riverview Road along a curve to the left with a radius of 817.03', an arc length of 182.64', a chord bearing of S63°39'22"E, a chord distance of 182.26' to a point; thence, continuing with the center of Riverview Road, S70°03'36"E, 238.40' to a point; thence, continuing the center of Riverview Road, S71°39'04"E, 122.17' to a point; thence continuing with the center of Riverview Road, S70°04'21"E, 323.79' to a point; thence, continuing with the center of Riverview Road, S73°07'40"E, 172.79' to a point; thence continuing with the center of Riverview Road along a curve to left with a radius of 363.52', an arc of 218.02', a chord bearing of N89°41'27"E, a chord distance of 214.77' to a point; thence continuing with the center of Riverview Road, N72°30'34"E, 1121.05' to a point, a corner with the land of Paul W. and Lynette W. Carden; thence with the lands of Carden, S16°55'56"E, 25.10' to a found rod; thence, S16°55'56"E, 186.54' to a point; thence, S18°48'16"E, 113.52' to a found rod, a corner with the lands of Carden and William J. Hausman Trustee; thence with the lands of Hausman, S18°48'16"E, 14.77' to a point; thence, S16°59'46"E, 230.71' to a point; thence, S17°55'46"E, 254.40' to a point; thence, S15°17'47"E, 314.25' to a point; thence, S18°50'47"E, 9.30' to a pin set; thence, N71°10'43"E, 1394.89' to a found concrete monument, a corner with the lands of Kenneth Peace Giedd Trustee and Susan Garcia Giedd Trustee and Jimmy C. and Judith R. Biggs; thence, with the lands of Biggs, S29°06'23"E, 100.85' to a point; thence, S32°04'01"E, 100.42' to a point; thence, S31°40'49"E, 16.84' to a point, a corner with the lands of Paul N. Harris; thence, S31°46'16"E, 985.18' to a point; thence S66°32'29"E, 9.04' to a point, a corner with the lands of Harris and The United States of America, Camp Peary; thence, with the lands of Camp Peary, S17°42'43"W, 175.30' to a found concrete monument; thence, S17°42'43"W, 185.62' to a point which is 0.25' northwest of a found concrete monument; thence, S17°42'43"W, 705.28' to a point which is 1.01' northwest of a found concrete monument; thence S17°42'43"W, 340.58' to a point which is 0.77' northwest of a found concrete monument; thence S17°42'43"W, 296.51' to a point which is 0.52' northwest of a found concrete monument; thence, S17°42'43"W, 685.77' to a found concrete monument; thence, S32°16'34"W, 185.19' to a found concrete monument; thence S32°16'34"W, 1059.32' to a point which is 1.52' northwest of a 30" Pine tree with wire; thence, S32°16'34"W, 83.88' to a point in the center of a stream, a corner with the lands of Camp Peary and Hampton 41, LLC, Abbitt Land Co., R Holdings, LLC, and Mountain Park LLC; thence, following the meanderings of the centerline of the stream in a Northwesterly direction for a distance of 1776± to a point; thence, with the lands of Hampton 41, LLC, et.als., N65°01'26"W, 461.12' to point; thence, N64°27'26"W, 12.84' to a found 4"x 4" wooden post; thence N64°27'26"W, 135.68' to a point; thence, N64°37'26"W, 752.55' to a point; thence, N64°55'26"W, 229.50' to a point; thence, N62°49'26"W, 65.00' to a point; thence, N65°02'26"W, 989.80' to a point; thence, N64°37'26"W, 261.70' to a point; thence, N64°30'26"W, 99.94' to a point; thence, N64°34'26"W, 447.30' to a point; thence, N64°20'26"W, 1153.70' to a found pipe, a corner with the lands of Hampton 41, LLC, et. als. and Kenneth Chandler; thence, with the lands of Chandler, N09°45'39"E, 375.28' to a found pipe; thence, N07°11'48"E, 284.19' to a found pipe; thence, N07°03'46"E, 469.47' to a found axle; thence, N05°15'42"E, 900.68' to a found pipe; thence, N04°40'00"E, 79.88' to a found pipe, a corner with the lands of Chandler and Joanne Kellam; thence, with the lands of Kellam, N24°48'29"E, 65.43' to a found pipe; thence, N06°43'38"E, 298.58' to a found pipe; thence, N06°35'38"E, 288.57' to a found pipe; thence, N06°35'38"E, 15.02' to a point in the center of Riverview Road, the Point of Beginning, containing 400.797 acres.



JCC Subdivision Agent 
Approval Not Required

I CERTIFY THIS PERIMETER SURVEY IS CORRECT TO THE BEST OF MY KNOWLEDGE AND BELIEF SUBJECT TO EASEMENTS, SERVITUDES AND COVENANTS OF RECORD. THIS SURVEY IS BASED ON A CURRENT FIELD SURVEY.

DATE: SEPTEMBER 10, 2018 SCALE: 1"=200'
TOMLIN & KEYSER
(804) 453-4100
809 JESSIE DUPONT HIGHWAY, P.O. BOX 99
BURGESS, VIRGINIA 22432
DRAWN BY: 2004 JOB NO. JCS 1
CHECKED BY: PLK FLD. BK. PG.
SECT. NO. 1640100003 DATA:
DRAWING NAME: JCS1

180015007

ALTA/NSPS LAND TITLE SURVEY OF THE LAND OF RIVERVIEW

STONEHOUSE MAGISTERIAL DISTRICT
JAMES CITY COUNTY, VIRGINIA

POINT OF BEGINNING

CURVE TABLE					
CURVE	LENGTH	RADIUS	DELTA	CHORD BEARING	CHORD
C1	354.63'	1361.31'	14°55'33"	S62°59'16"E	353.62'
C2	182.64'	817.03'	12°48'28"	S63°39'22"E	182.26'
C3	218.02'	363.52'	34°21'46"	N89°41'27"E	214.77'

GRID NORTH
VIRGINIA STATE PLANE
SOUTH ZONE

JOANNE KELLAM
INSTRUMENT #080012876
TAX MAP 1630100007

N06°43'38"E
298.58'
MEASURED
298.58'
RECORDED

N24°48'29"E
65.43'
MEASURED
65.00'
RECORDED

N04°40'00"E
79.88'

N06°35'38"E
303.59'

288.57'
MEASURED
288.65'
RECORDED

FD. PIPE

FD. PIPE

FD. PIPE

FD. PIPE

FD. PIPE

FD. PIPE

FD. PIPE

FD. PIPE

900.68'

N05°15'42"E

N07°03'46"E
469.47'

N07°11'48"E
284.19'

FD. AXLE

FD. PIPE

FD. PIPE

FD. PIPE

FD. PIPE

FD. PIPE

FD. PIPE

FD. PIPE

FD. PIPE

FD. PIPE

FD. PIPE

FD. PIPE

FD. PIPE

FD. PIPE

FD. PIPE

FD. PIPE

FD. PIPE

FD. PIPE

FD. PIPE

FD. PIPE

S70°27'03"E
187.60'

S70°03'36"E
238.40'

S71°39'04"E
122.17'

S70°04'21"E
323.79'

S73°07'40"E
172.79'

N72°30'34"E
1121.05'

S55°31'30"E
343.36'

S57°15'08"E
308.78'

S70°03'36"E
238.40'

S71°39'04"E
122.17'

S70°04'21"E
323.79'

S73°07'40"E
172.79'

N72°30'34"E
1121.05'

S55°31'30"E
343.36'

S57°15'08"E
308.78'

S70°03'36"E
238.40'

S71°39'04"E
122.17'

S70°04'21"E
323.79'

S73°07'40"E
172.79'

N72°30'34"E
1121.05'

S55°31'30"E
343.36'

S57°15'08"E
308.78'

S70°03'36"E
238.40'

S71°39'04"E
122.17'

S70°04'21"E
323.79'

S73°07'40"E
172.79'

N72°30'34"E
1121.05'

S55°31'30"E
343.36'

S57°15'08"E
308.78'

S70°03'36"E
238.40'

S71°39'04"E
122.17'

S70°04'21"E
323.79'

S73°07'40"E
172.79'

N72°30'34"E
1121.05'

S55°31'30"E
343.36'

S57°15'08"E
308.78'

S70°03'36"E
238.40'

S71°39'04"E
122.17'

S70°04'21"E
323.79'

S73°07'40"E
172.79'

N72°30'34"E
1121.05'

S55°31'30"E
343.36'

S57°15'08"E
308.78'

S70°03'36"E
238.40'

S71°39'04"E
122.17'

S70°04'21"E
323.79'

S73°07'40"E
172.79'

N72°30'34"E
1121.05'

S55°31'30"E
343.36'

S57°15'08"E
308.78'

S70°03'36"E
238.40'

S71°39'04"E
122.17'

S70°04'21"E
323.79'

S73°07'40"E
172.79'

N72°30'34"E
1121.05'

S55°31'30"E
343.36'

S57°15'08"E
308.78'

S70°03'36"E
238.40'

S71°39'04"E
122.17'

S70°04'21"E
323.79'

S73°07'40"E
172.79'

N72°30'34"E
1121.05'

S55°31'30"E
343.36'

S57°15'08"E
308.78'

S70°03'36"E
238.40'

S71°39'04"E
122.17'

S70°04'21"E
323.79'

S73°07'40"E
172.79'

N72°30'34"E
1121.05'

S55°31'30"E
343.36'

S57°15'08"E
308.78'

S70°03'36"E
238.40'

S71°39'04"E
122.17'

S70°04'21"E
323.79'

S73°07'40"E
172.79'

N72°30'34"E
1121.05'

S55°31'30"E
343.36'

S57°15'08"E
308.78'

S70°03'36"E
238.40'

S71°39'04"E
122.17'

S70°04'21"E
323.79'

S73°07'40"E
172.79'

N72°30'34"E
1121.05'

S55°31'30"E
343.36'

S57°15'08"E
308.78'

S70°03'36"E
238.40'

S71°39'04"E
122.17'

S70°04'21"E
323.79'

S73°07'40"E
172.79'

N72°30'34"E
1121.05'

S55°31'30"E
343.36'

S57°15'08"E
308.78'

S70°03'36"E
238.40'

S71°39'04"E
122.17'

S70°04'21"E
323.79'

S73°07'40"E
172.79'

N72°30'34"E
1121.05'

S55°31'30"E
343.36'

S57°15'08"E
308.78'

S70°03'36"E
238.40'

S71°39'04"E
122.17'

S70°04'21"E
323.79'

S73°07'40"E
172.79'

N72°30'34"E
1121.05'

S55°31'30"E
343.36'

S57°15'08"E
308.78'

S70°03'36"E
238.40'

S71°39'04"E
122.17'

S70°04'21"E
323.79'

S73°07'40"E
172.79'

N72°30'34"E
1121.05'

S55°31'30"E
343.36'

S57°15'08"E
308.78'

S70°03'36"E
238.40'

S71°39'04"E
122.17'

S70°04'21"E
323.79'

S73°07'40"E
172.79'

N72°30'34"E
1121.05'

S55°31'30"E
343.36'

S57°15'08"E
308.78'

S70°03'36"E
238.40'

S71°39'04"E
122.17'

S70°04'21"E
323.79'

S73°07'40"E
172.79'

N72°30'34"E
1121.05'

S55°31'30"E
343.36'

S57°15'08"E
308.78'

S70°03'36"E
238.40'

S71°39'04"E
122.17'

S70°04'21"E
323.79'

S73°07'40"E
172.79'

N72°30'34"E
1121.05'

S55°31'30"E
343.36'

S57°15'08"E
308.78'

S70°03'36"E
238.40'

S71°39'04"E
122.17'

S70°04'21"E
323.79'

S73°07'40"E
172.79'

N72°30'34"E
1121.05'

S55°31'30"E
343.36'

S57°15'08"E
308.78'

S70°03'36"E
238.40'

S71°39'04"E
122.17'

S70°04'21"E
323.79'

S73°07'40"E
172.79'

N72°30'34"E
1121.05'

S55°31'30"E
343.36'

S57°15'08"E
308.78'

S70°03'36"E
238.40'

S71°39'04"E
122.17'

S70°04'21"E
323.79'

S73°07'40"E
172.79'

N72°30'34"E
1121.05'

S55°31'30"E
343.36'

S57°15'08"E
308.78'

S70°03'36"E
238.40'

S71°39'04"E
122.17'

S70°04'21"E
323.79'

S73°07'40"E
172.79'

N72°30'34"E
1121.05'

S55°31'30"E
343.36'

S57°15'08"E
308.78'

S70°03'36"E
238.40'

S71°39'04"E
122.17'

S70°04'21"E
323.79'

S73°07'40"E
172.79'

N72°30'34"E
1121.05'

S55°31'30"E
343.36'

S57°15'08"E
308.78'

S70°03'36"E
238.40'

S71°39'04"E
122.17'

S70°04'21"E
323.79'

S73°07'40"E
172.79'

N72°30'34"E
1121.05'

S55°31'30"E
343.36'

S57°15'08"E
308.78'

S70°03'36"E
238.40'

S71°39'04"E
122.17'

S70°04'21"E
323.79'

S73°07'40"E
172.79'

N72°30'34"E
1121.05'

S55°31'30"E
343.36'

S57°15'08"E
308.78'

S70°03'36"E
238.40'

S71°39'04"E
122.17'

S70°04'21"E
323.79'

S73°07'40"E
172.79'

N72°30'34"E
1121.05'

S55°31'30"E
343.36'

S57°15'08"E
308.78'

S70°03'36"E
238.40'

S71°39'04"E
122.17'

S70°04'21"E
323.79'

ALTA/NSPS LAND TITLE SURVEY OF THE LAND OF RIVERVIEW

STONEHOUSE MAGISTERIAL DISTRICT
JAMES CITY COUNTY, VIRGINIA

N72°30'34"E
1121.05'

C3

25.10'
FD. ROD
S16°55'56"E
211.63'
MEASURED
186.54'
RECORDED
186.57'

PAUL W. CARDEN
LYNETTE M. CARDEN
INSTRUMENT #140013711
TAX MAP 1641000004A

S18°48'16"E
128.29'
MEASURED
128.29'
RECORDED

113.52'
14.77'
FD. ROD
S16°59'46"E
230.71'
MEASURED
230.71'
RECORDED

WILLIAM J. HAUSMAN TRUSTEE
INSTRUMENT #130018113
TAX MAP 1641000004

EXISTING ROAD
MEANDERS BACK
AND FORTH ACROSS
PROPERTY LINE

S17°55'46"E
254.40'
MEASURED
254.40'
RECORDED

10' EASEMENT
OF RIGHT OF WAY
EAST OF PROPERTY LINE

S15°17'47"E
314.25'
MEASURED
314.25'
RECORDED

THIS LINE BASED ON SURVEY
RECORDED IN PLAT BOOK 65
PAGE 98

S18°50'47"E
9.30'
MEASURED
9.30'
RECORDED

PIN
SET

KENNETH PEACE GIEDD TRUSTEE
SUSAN GARCIA GIEDD TRUSTEE
INSTRUMENT #130018714
TAX MAP 1641000001

JIMMY C. BIGGS
JUDITH R. BIGGS
INSTRUMENT #080022155
TAX MAP 1640700004

FD. CONCRETE
MONUMENT

S29°06'23"E
100.85'
MEASURED
100.85'
RECORDED

S32°04'01"E
100.42'
MEASURED
100.42'
RECORDED

S31°40'49"E
16.84'
MEASURED
16.84'
RECORDED

THIS LINE BASED ON SURVEY
RECORDED IN PLAT BOOK 40
PAGE 75

THIS LINE BASED ON SURVEY
RECORDED AS INSTRUMENT
#090006859

N71°10'43"E
1394.89' MEASURED
1395.00' RECORDED

PAUL N. HARRIS
DB 512 PG. 834
TAX MAP 1640700001C

985.18' MEASURED
985.18' RECORDED

ROBERT PAUL HARRIS
INSTRUMENT #100014760
TAX MAP 1640700001E

FLOOD LINE
SEE NOTE

S66°32'29"E
9.04'

FLOOD ZONE AE 7

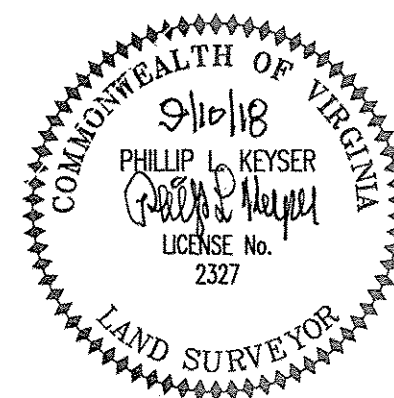
FD. CONCRETE
MONUMENT

FD. CONCRETE
MONUMENT
0.25' SOUTHEAST
OF LINE

BARBED WIRE
FENCE SOUTHEAST
AND ALONG LINE

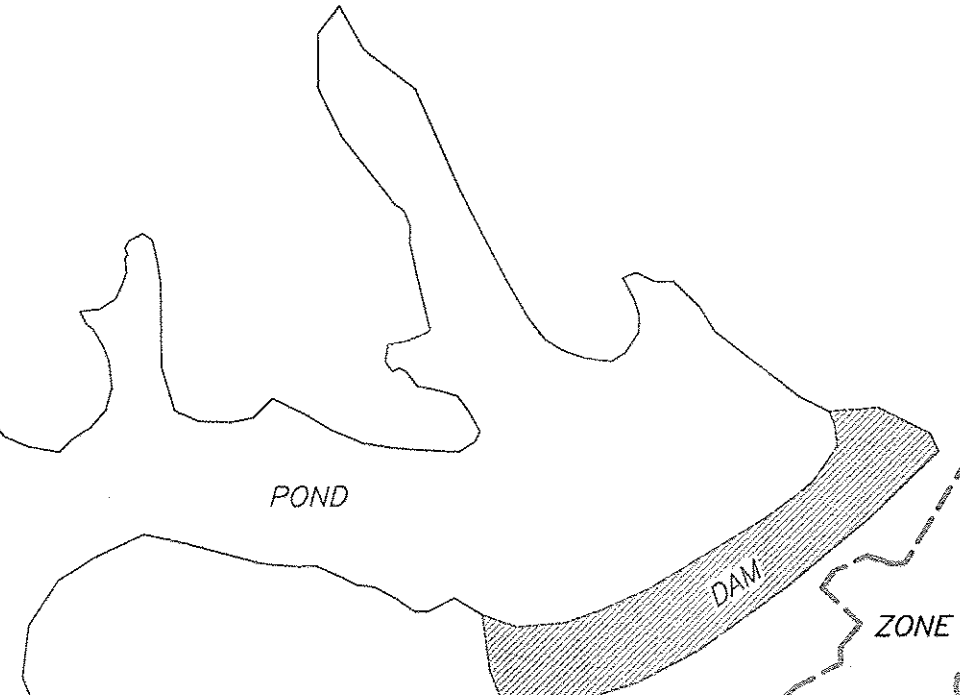
I CERTIFY THIS PERIMETER SURVEY
IS CORRECT TO THE BEST OF MY KNOWLEDGE
AND BELIEF SUBJECT TO EASEMENTS,
SERVITUDES AND COVENANTS OF RECORD.
THIS SURVEY IS BASED ON A CURRENT
FIELD SURVEY.

DATE: SEPTEMBER 10, 2018 SCALE: 1"=200'
TOMLIN & KEYSER
(804) 453-4100
809 JESSIE DUPONT HIGHWAY, P.O. BOX 99
BURGESS, VIRGINIA 22432
DRAWN BY: 2004 JOB NO. JCS 1
CHECKED BY: PLK FLD. BK. PG.
SECT. NO. 1640100003 DATA:
DRAWING NAME: JCS1



LIMITED USE AREA
171.668 AC.

EXISTING
LANE



ELEVATION AT OUTFALL OF DAM - 0.0'
ASSUMED

ELEVATION AT TOP OF DAM - 15.2'

ELEVATION ON TOP OF POND - 11.8'

THESE OBSERVATIONS WERE TAKEN ON
JULY 26, 2018

GRAPHIC SCALE



(IN FEET)
1 inch = 200 ft.

SHEET 3 OF 5

City of Williamsburg & County of James City
Circuit Court: This PLAT was recorded on
Sept 21, 2018
at 2:15 AM/PM, PB PG
Document # 180015007
MONA A. FOLEY, CLERK

Large/Small Plat(s) Recorded
herewith as #

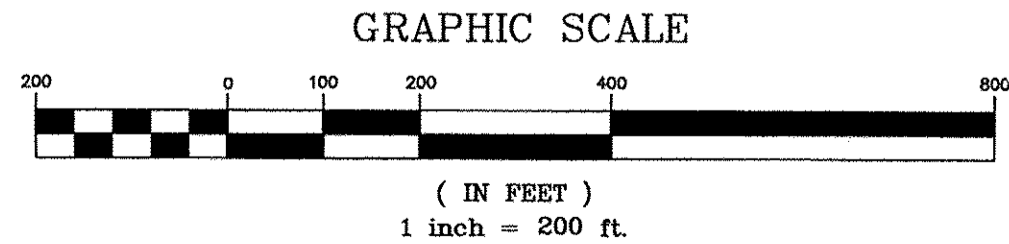
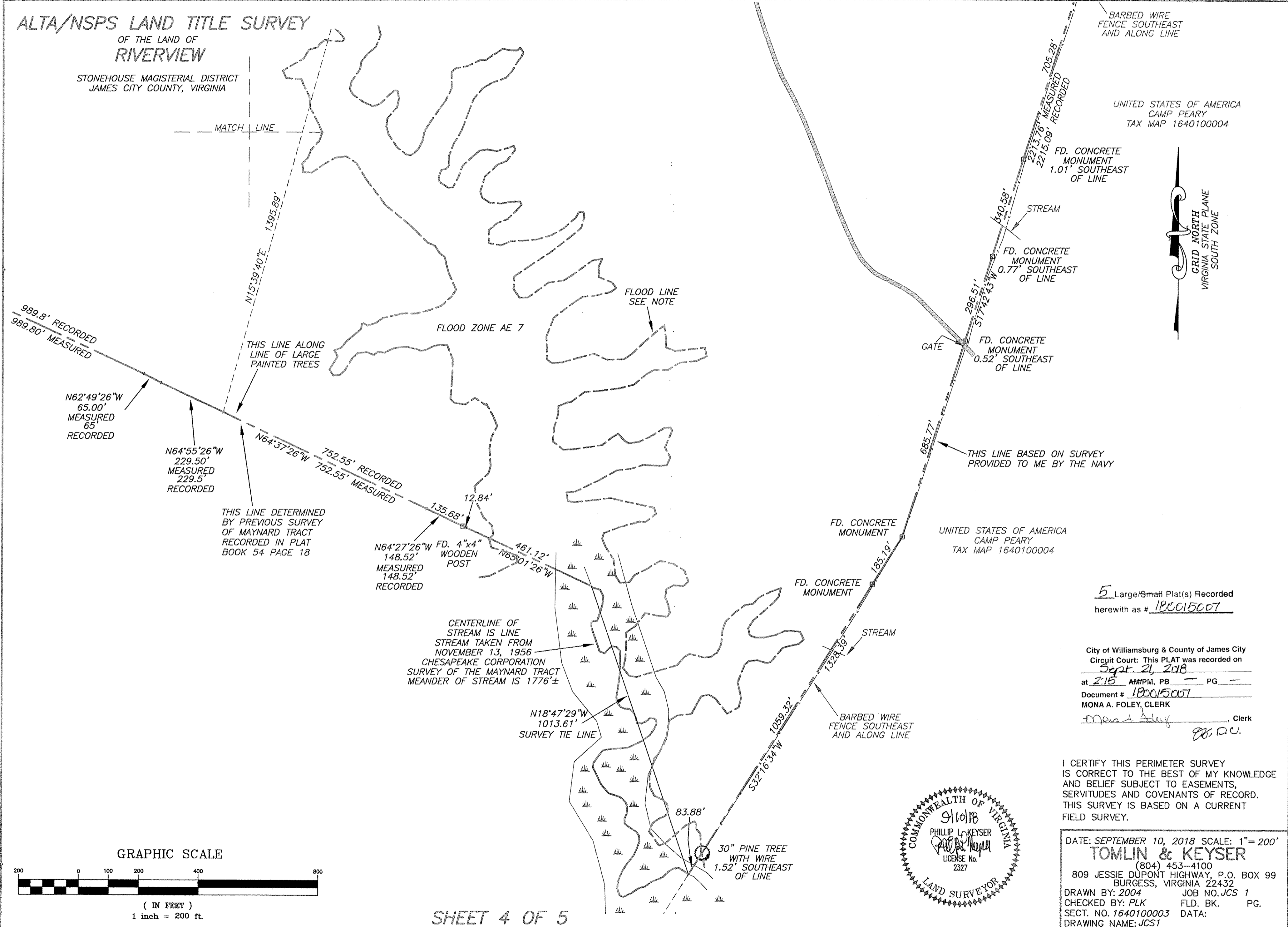
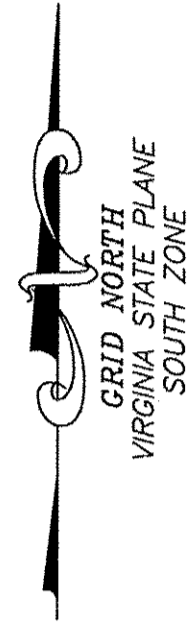
Mona Foley, Clerk
Eg. P.O.

180015007

ALTA/NSPS LAND TITLE SURVEY OF THE LAND OF RIVERVIEW

STONEHOUSE MAGISTERIAL DISTRICT
JAMES CITY COUNTY, VIRGINIA

UNITED STATES OF AMERICA
CAMP PEARY
TAX MAP 1640100004

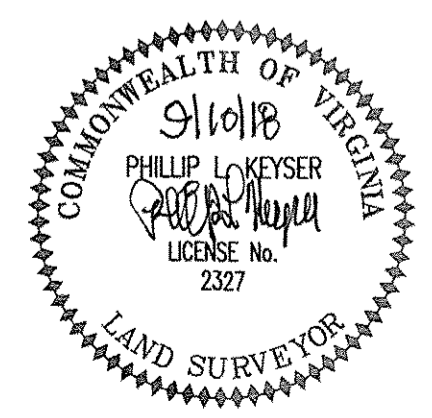


SHEET 4 OF 5

5 Large/Small Plat(s) Recorded
herewith as # 180015007

City of Williamsburg & County of James City
Circuit Court: This PLAT was recorded on
Sept. 21, 2018
at 2:15 AM/PM, PB — PG —
Document # 180015007
MONA A. FOLEY, CLERK
Mona A. Foley Clerk
P.L.K.

I CERTIFY THIS PERIMETER SURVEY IS CORRECT TO THE BEST OF MY KNOWLEDGE AND BELIEF SUBJECT TO EASEMENTS, SERVITUDES AND COVENANTS OF RECORD. THIS SURVEY IS BASED ON A CURRENT FIELD SURVEY.



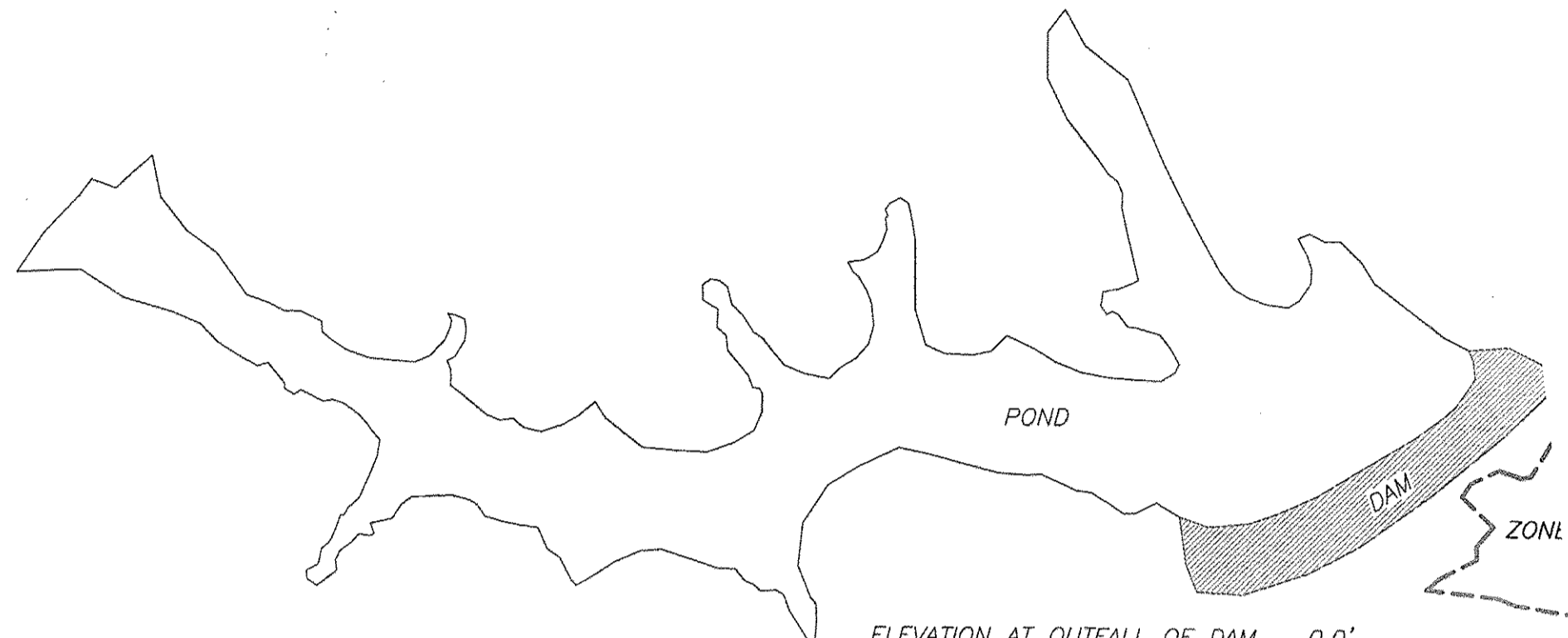
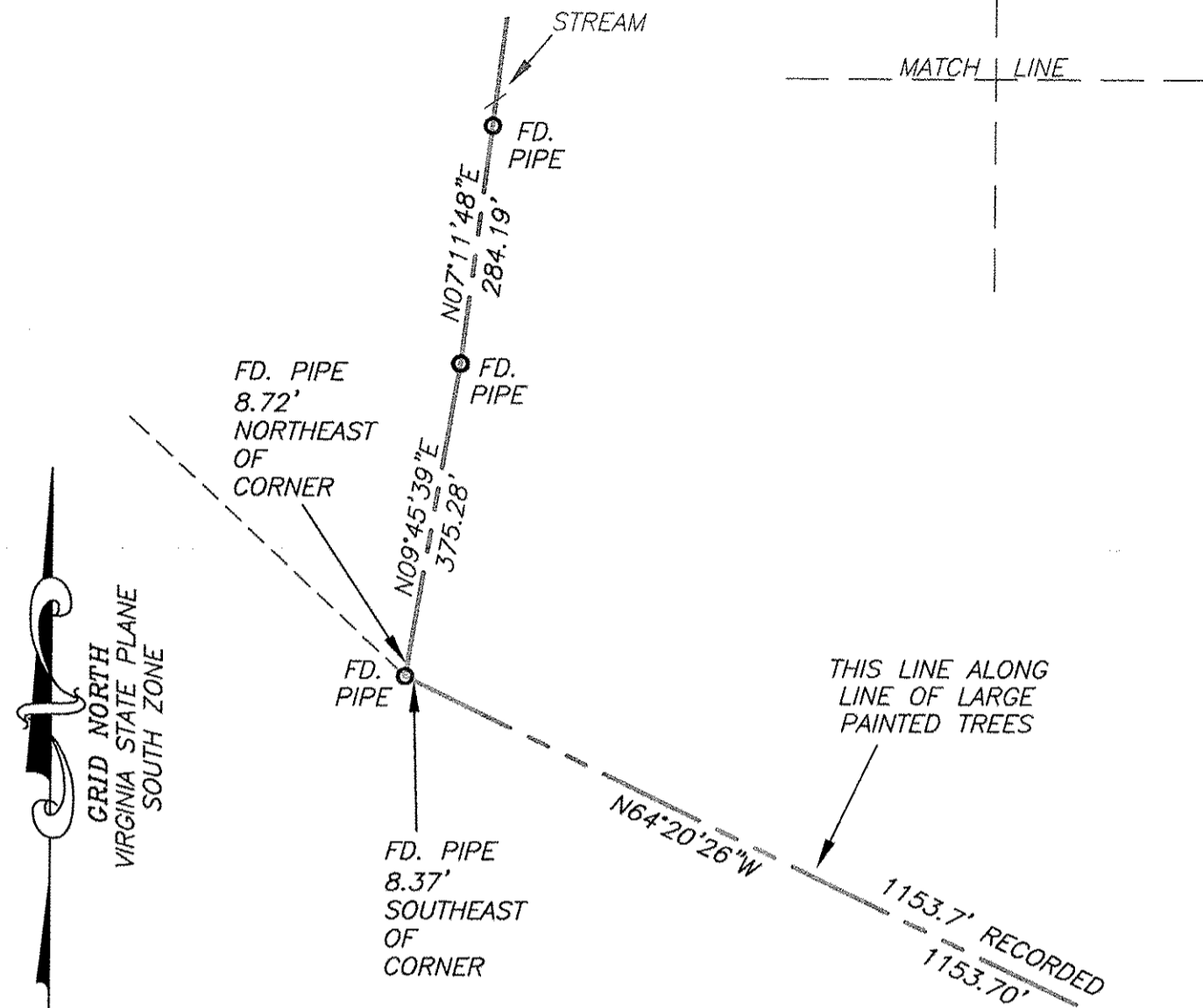
DATE: SEPTEMBER 10, 2018 SCALE: 1" = 200'
TOMLIN & KEYSER
(804) 453-4100
809 JESSIE DUPONT HIGHWAY, P.O. BOX 99
BURGESS, VIRGINIA 22432
DRAWN BY: 2004 JOB NO. JCS 1
CHECKED BY: PLK FLD. BK. PG.
SECT. NO. 1640100003 DATA:
DRAWING NAME: JCS1

180015007

ALTA/NSPS LAND TITLE SURVEY
OF THE LAND OF
RIVERVIEW

PARK DEVELOPMENT AREA
229.129 AC.

STONEHOUSE MAGISTERIAL DISTRICT
JAMES CITY COUNTY, VIRGINIA



ELEVATION AT OUTFALL OF DAM - 0.0'
ASSUMED

ELEVATION AT TOP OF DAM - 15.2'

ELEVATION ON TOP OF POND - 11.8'

THESE OBSERVATIONS WERE TAKEN ON
JULY 26, 2018

THIS LINE ALONG
LINE OF LARGE
PAINTED TREES

THIS LINE DETERMINED
BY PREVIOUS SURVEY
OF MAYNARD TRACT
RECORDED IN PLAT
BOOK 54 PAGE 18

N64°20'26"W

1153.7' RECORDED
1153.70'

N64°34'26"W
447.30'
MEASURED
447.3'
RECORDED

N64°30'26"W
99.94'
MEASURED
99.94'
RECORDED

N64°37'26"W
261.70'
MEASURED
261.7'
RECORDED

N65°02'26"W

989.8' RECORDED
989.80' MEASURED

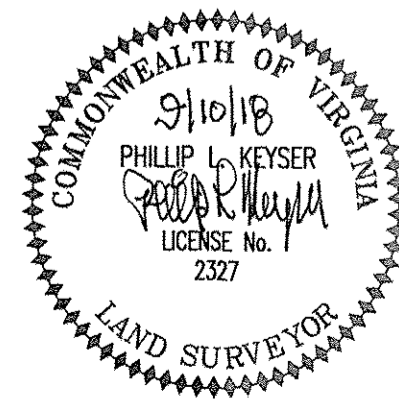
N62°49'26"W
65.00'
MEASURED
65'
RECORDED

N15°39'40"E
1395.89'

HAMPTON 41, LLC
ABBITT LAND CO.
R. HOLDINGS LLC
MOUNTAIN PARK LLC
INSTRUMENT #140013182
TAX MAP 1630100011

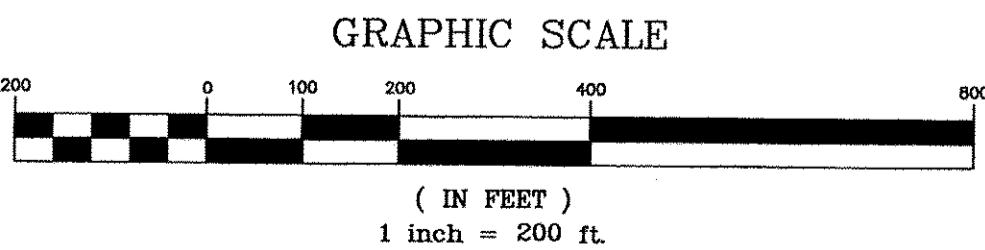
5 Large/Small Plat(s) Recorded
herewith as # 180015007

City of Williamsburg & County of James City
Circuit Court: This PLAT was recorded on
Sept. 2, 2018
at 2:15 AM/PM, PB - PG -
Document # 180015007
MONA A. FOLEY, CLERK
Mona A. Foley, Clerk



I CERTIFY THIS PERIMETER SURVEY
IS CORRECT TO THE BEST OF MY KNOWLEDGE
AND BELIEF SUBJECT TO EASEMENTS,
SERVITUDES AND COVENANTS OF RECORD.
THIS SURVEY IS BASED ON A CURRENT
FIELD SURVEY.

DATE: SEPTEMBER 10, 2018 SCALE: 1"= 200'
TOMLIN & KEYSER
(804) 453-4100
809 JESSIE DUPONT HIGHWAY, P.O. BOX 99
BURGESS, VIRGINIA 22432
DRAWN BY: 2004 JOB NO. JCS 1
CHECKED BY: PLK FLD. BK. PG.
SECT. NO. 1640100003 DATA:
DRAWING NAME: JCS1



BY DL