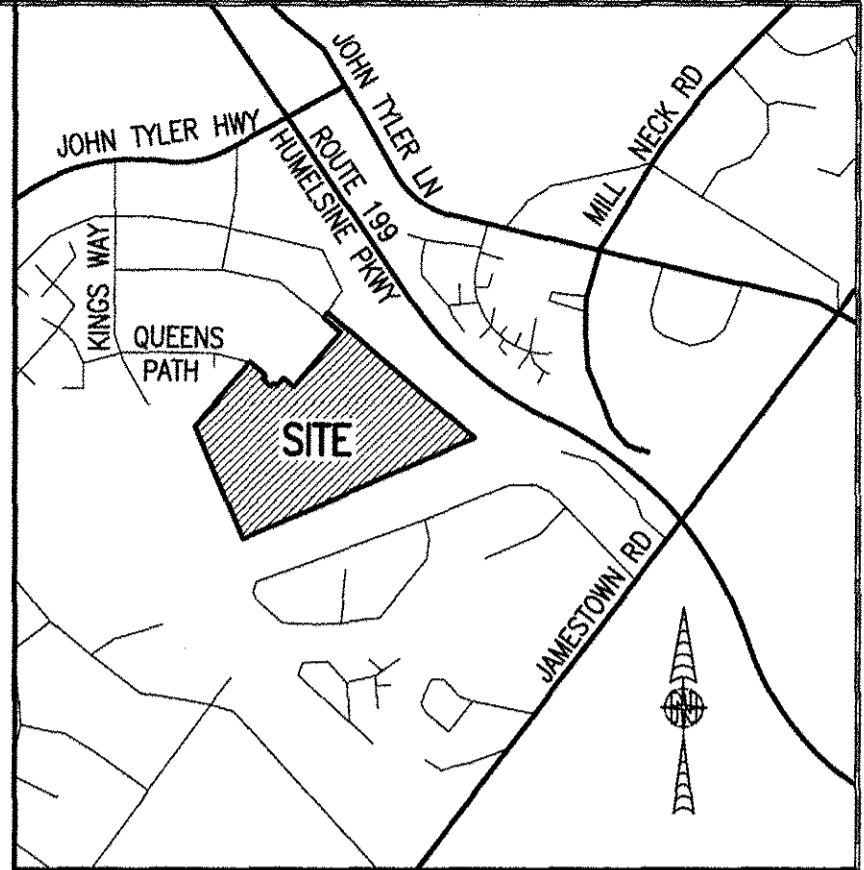


180014663

I HEREBY CERTIFY THAT THIS PLAT IS ACCURATE AND THAT IT COMPLIES WITH THE PROVISIONS OF THE CODE OF VIRGINIA OF 1950 AS AMENDED, § 55-79.58 AND I FURTHER CERTIFY THAT ALL IMPROVEMENTS THEREOF DEPICTED HEREON, PURSUANT TO THE CODE OF VIRGINIA § 55-79.58A, ARE SUBSTANTIALLY COMPLETE.



AREA TABLE				
PHASE	BLDG#	STATUS/RECORDATION	SQUARE FEET	ACRES
1	N/A	INSTR.#170011679	268,468	6.163
7	7	SUBSTANTIALLY COMPLETE	28,822	0.662
8	8	INSTR.#180010369	24,539	0.563
9	9	INSTR.#180003694	25,978	0.596
10	10	INSTR.#170023466	25,806	0.592
13	13	INSTR.#180010007	4,512	0.104
14	14	INSTR.#180009579	6,462	0.148
23	23	INSTR.#180001768	5,014	0.115
24	24	INSTR.#180005480	4,464	0.102
25	25	INSTR.#180001779	4,466	0.103
26	26	INSTR.#170021156	4,465	0.102
27	27	INSTR.#170021157	4,944	0.114
28	28	INSTR.#180001781	4,936	0.113
29	29	NOT YET RECORDED	10,569	0.243
53	N/A	NOT YET RECORDED	49,886	1.145
REMAINS OF ADDITIONAL LAND A-1			62,905	1.444
ADDITIONAL LAND A-2			41,237	0.947
ADDITIONAL LAND A-4			43,699	1.003
ADDITIONAL LAND A-5			48,588	1.115
ADDITIONAL LAND A-6			23,122	0.531
ADDITIONAL LAND A-7			123,747	2.841
TOTAL: NEW PARCEL 29			816,629	18.747

LEGAL DESCRIPTION

PROPERTY SHOWN HEREON BEING "NEW PARCEL 29" CONTAINING 18.747 ACRES AS SHOWN ON "PLAT OF LOT LINE EXTINGUISHMENT BEING PARCELS 20 AND 29 OF WILLIAMSBURG CROSSING" PREPARED BY AES CONSULTING ENGINEERS, DATED 10-24-16 AND RECORDED AS INSTRUMENT NO. 160021147.

NOTES:

- PHASE 7 BUILDING 7 IS SUBSTANTIALLY COMPLETE.
- EASEMENTS AND BUILDING LINES SHOWN HEREON PER THE FOLLOWING:
 - ALTA SURVEY BY AES CONSULTING ENGINEERS, DATED 3-23-15
 - PLAT BY AES CONSULTING ENGINEERS, DATED 10-24-16, INST.#160021147
 - PLAN OF DEVELOPMENT BY AES CONSULTING ENGINEERS, DATED 9-8-16

SHEET INDEX:

- SHEET 1 OF 2: OVERALL SITE LAYOUT AND AREAS
- SHEET 2 OF 2: PROPERTY DATA, EASEMENTS, CURVE AND LINE TABLE
- SHEET 3 OF 5: BUILDING DETAIL
- SHEET 4 OF 5: FOUNDATION PLAN AND SECTION
- SHEET 5 OF 5: FLOOR PLANS

THIS SHEET: OVERALL SITE LAYOUT AND AREAS

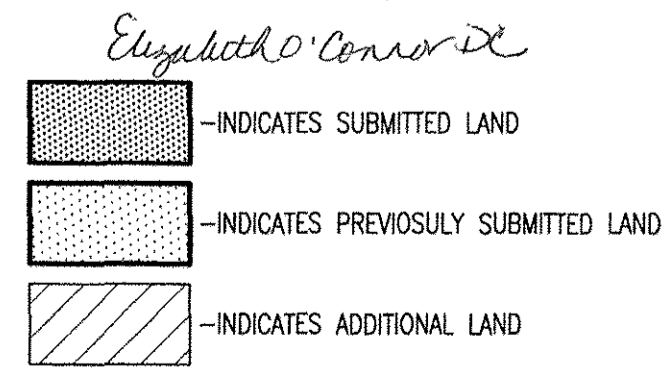
PHASE 7
CONDOMINIUM PLAT AND PLAN
 OF
THE PROMENADE
 AT
JOHN TYLER
 A CONDOMINIUM
 JAMES CITY COUNTY, VIRGINIA

Jo# 160921
 Hayden Frye and Associates, Inc.
Land Surveyors
 333 KELLAM ROAD, SUITE 200
 VIRGINIA BEACH, VA, 23462
 PH: (757) 491-7228 FX: (757) 491-7229

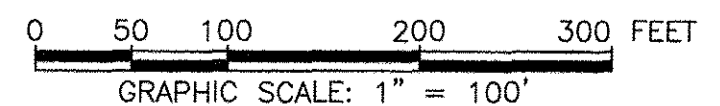
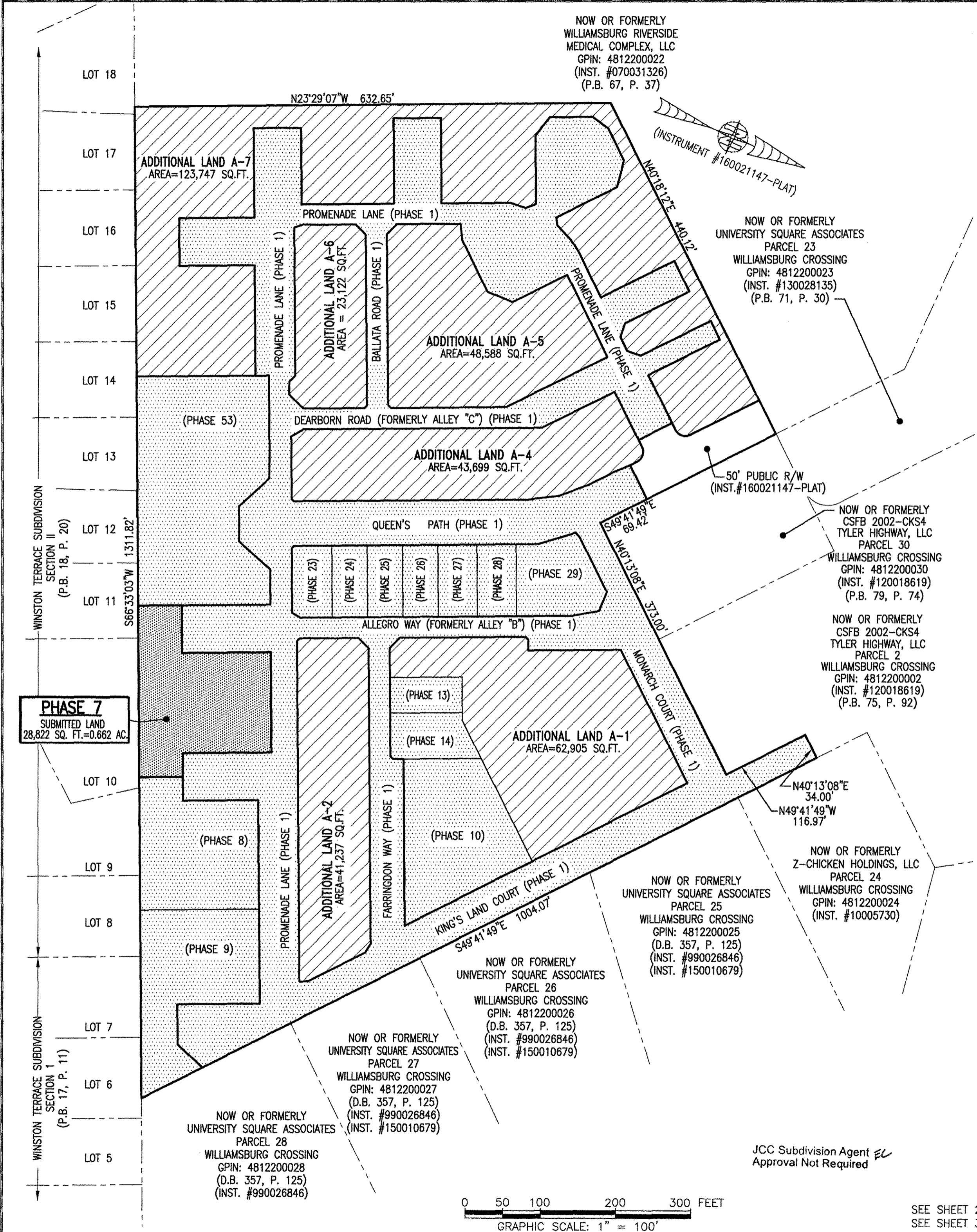
DATE: SEPTEMBER 10, 2018
 SCALE: 1"=100'
 SHEET 1 OF 5 THIS PHASE

5 Large/Small Plat(s) Recorded
 herewith as # 180014663

City of Williamsburg & County of James City
 Circuit Court: This PLAT was recorded on
 September 17, 2018
 at 11:11 AM, PB PG
 Document # 180014663
 MONA A. FOLEY, CLERK
 Clerk

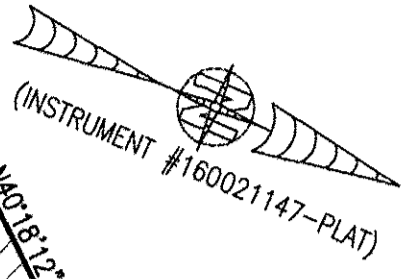


SEE SHEET 2 FOR PROPERTY DATA, EASEMENTS, CURVE AND LINE TABLE
 SEE SHEET 3 FOR BUILDING DETAIL



JCC Subdivision Agent
 Approval Not Required

NOW OR FORMERLY
 WILLIAMSBURG RIVERSIDE
 MEDICAL COMPLEX, LLC
 GPIN: 4812200022
 (INST. #070031326)
 (P.B. 67, P. 37)



NOW OR FORMERLY
 UNIVERSITY SQUARE ASSOCIATES
 PARCEL 23
 WILLIAMSBURG CROSSING
 GPIN: 4812200023
 (INST. #130028135)
 (P.B. 71, P. 30)

NOW OR FORMERLY
 CSFB 2002-CKS4
 TYLER HIGHWAY, LLC
 PARCEL 30
 WILLIAMSBURG CROSSING
 GPIN: 4812200030
 (INST. #120018619)
 (P.B. 79, P. 74)

NOW OR FORMERLY
 CSFB 2002-CKS4
 TYLER HIGHWAY, LLC
 PARCEL 2
 WILLIAMSBURG CROSSING
 GPIN: 4812200002
 (INST. #120018619)
 (P.B. 75, P. 92)

NOW OR FORMERLY
 Z-CHICKEN HOLDINGS, LLC
 PARCEL 24
 WILLIAMSBURG CROSSING
 GPIN: 4812200024
 (INST. #10005730)

NOW OR FORMERLY
 UNIVERSITY SQUARE ASSOCIATES
 PARCEL 25
 WILLIAMSBURG CROSSING
 GPIN: 4812200025
 (D.B. 357, P. 125)
 (INST. #990026846)
 (INST. #150010679)

NOW OR FORMERLY
 UNIVERSITY SQUARE ASSOCIATES
 PARCEL 26
 WILLIAMSBURG CROSSING
 GPIN: 4812200026
 (D.B. 357, P. 125)
 (INST. #990026846)
 (INST. #150010679)

NOW OR FORMERLY
 UNIVERSITY SQUARE ASSOCIATES
 PARCEL 27
 WILLIAMSBURG CROSSING
 GPIN: 4812200027
 (D.B. 357, P. 125)
 (INST. #990026846)
 (INST. #150010679)

NOW OR FORMERLY
 UNIVERSITY SQUARE ASSOCIATES
 PARCEL 28
 WILLIAMSBURG CROSSING
 GPIN: 4812200028
 (D.B. 357, P. 125)
 (INST. #990026846)

WINSTON TERRACE SUBDIVISION
 SECTION II
 (P.B. 18, P. 20)

WINSTON TERRACE SUBDIVISION
 SECTION I
 (P.B. 17, P. 11)