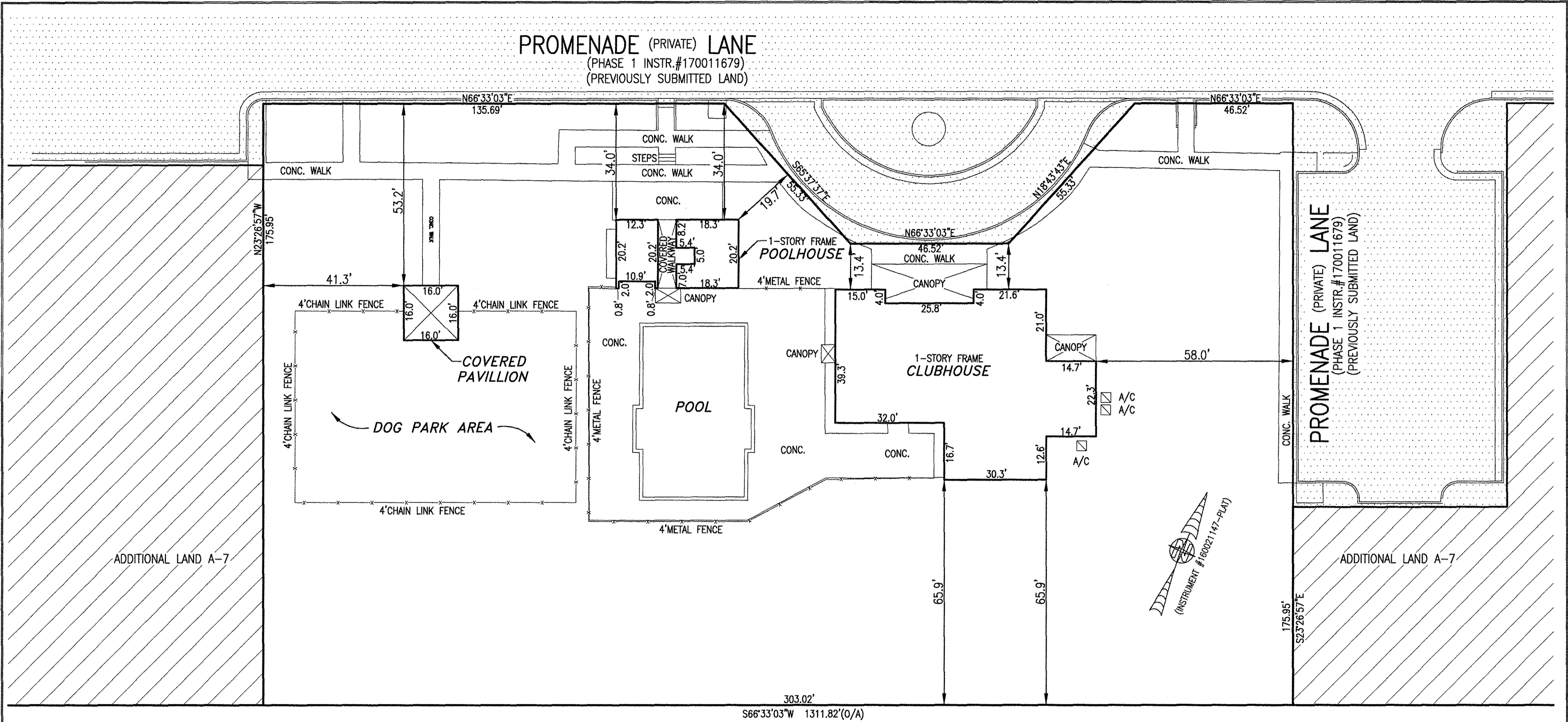


180014662

PROMENADE (PRIVATE) LANE
(PHASE 1 INSTR.#170011679)
(PREVIOUSLY SUBMITTED LAND)

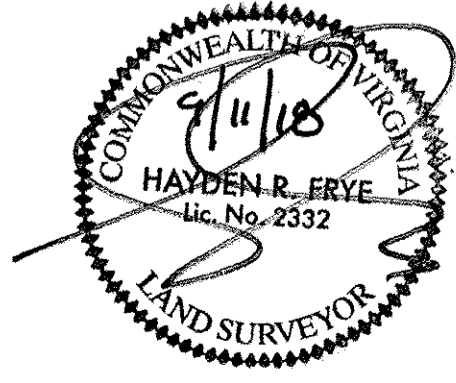


ADDITIONAL LAND A-7

ADDITIONAL LAND A-7




303.02'
S66°33'03"W 1311.82'(0/A)

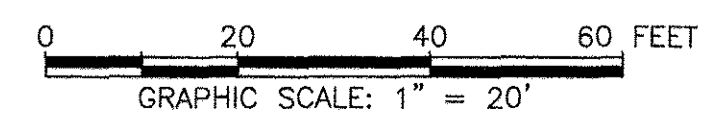
I HEREBY CERTIFY THAT THIS PLAT IS ACCURATE AND THAT IT COMPLIES WITH THE PROVISIONS OF THE CODE OF VIRGINIA OF 1950 AS AMENDED, § 55-79.58 AND I FURTHER CERTIFY THAT ALL IMPROVEMENTS THEREOF DEPICTED HEREON, PURSUANT TO THE CODE OF VIRGINIA § 55-79.58A, ARE SUBSTANTIALLY COMPLETE.



3 Large/Small Plat(s) Recorded
herewith as # 180014662

City of Williamsburg & County of James City
Circuit Court: This PLAT was recorded on
Sept 17, 2018
at 11:12 AM/PM, PB PG
Document # 180014662
MONA A. FOLEY, CLERK
Mona A. Foley Clerk

-  -INDICATES PREVIOUSLY SUBMITTED LAND
-  -INDICATES COMMON ELEMENT (EXCLUDING AREAS OUTSIDE SUBMITTED LAND)
-  -INDICATES ADDITIONAL LAND



JCC Subdivision Agent Approval Not Required

THIS SHEET: BUILDING DETAIL

PHASE 53
CONDOMINIUM PLAT
OF
THE PROMENADE
AT
JOHN TYLER
A CONDOMINIUM
JAMES CITY COUNTY, VIRGINIA

Jo# 180921

Hayden Frye and Associates, Inc.
Land Surveyors

333 KELLAM ROAD, SUITE 200
VIRGINIA BEACH, VA., 23462
PH: (757) 491-7228 FX: (757) 491-7229

DATE: SEPTEMBER 7, 2018
SCALE: 1"=20'
SHEET 3 OF 3 THIS PHASE