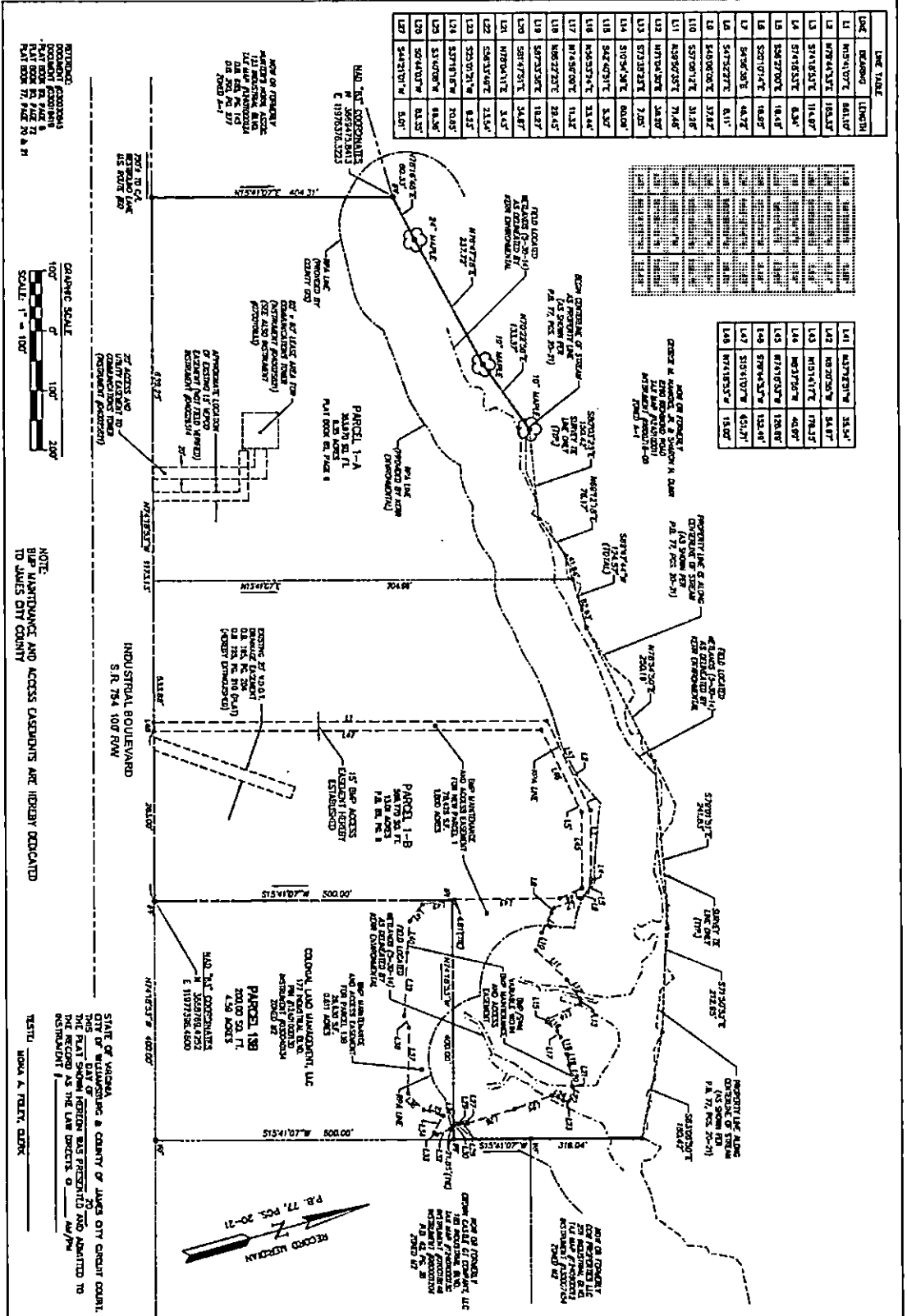


Corrected Exhibit C Easement and Access Area Exhibit

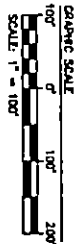
Lot	Area (sq. ft.)	Area (sq. ft.)	Area (sq. ft.)
L1	107,410.72	107,410.72	107,410.72
L2	107,410.72	107,410.72	107,410.72
L3	107,410.72	107,410.72	107,410.72
L4	107,410.72	107,410.72	107,410.72
L5	107,410.72	107,410.72	107,410.72
L6	107,410.72	107,410.72	107,410.72
L7	107,410.72	107,410.72	107,410.72
L8	107,410.72	107,410.72	107,410.72
L9	107,410.72	107,410.72	107,410.72
L10	107,410.72	107,410.72	107,410.72
L11	107,410.72	107,410.72	107,410.72
L12	107,410.72	107,410.72	107,410.72
L13	107,410.72	107,410.72	107,410.72
L14	107,410.72	107,410.72	107,410.72
L15	107,410.72	107,410.72	107,410.72
L16	107,410.72	107,410.72	107,410.72
L17	107,410.72	107,410.72	107,410.72
L18	107,410.72	107,410.72	107,410.72
L19	107,410.72	107,410.72	107,410.72
L20	107,410.72	107,410.72	107,410.72
L21	107,410.72	107,410.72	107,410.72
L22	107,410.72	107,410.72	107,410.72
L23	107,410.72	107,410.72	107,410.72
L24	107,410.72	107,410.72	107,410.72
L25	107,410.72	107,410.72	107,410.72
L26	107,410.72	107,410.72	107,410.72
L27	107,410.72	107,410.72	107,410.72

Lot	Area (sq. ft.)	Area (sq. ft.)	Area (sq. ft.)
L1	107,410.72	107,410.72	107,410.72
L2	107,410.72	107,410.72	107,410.72
L3	107,410.72	107,410.72	107,410.72
L4	107,410.72	107,410.72	107,410.72
L5	107,410.72	107,410.72	107,410.72
L6	107,410.72	107,410.72	107,410.72
L7	107,410.72	107,410.72	107,410.72
L8	107,410.72	107,410.72	107,410.72
L9	107,410.72	107,410.72	107,410.72
L10	107,410.72	107,410.72	107,410.72
L11	107,410.72	107,410.72	107,410.72
L12	107,410.72	107,410.72	107,410.72
L13	107,410.72	107,410.72	107,410.72
L14	107,410.72	107,410.72	107,410.72
L15	107,410.72	107,410.72	107,410.72
L16	107,410.72	107,410.72	107,410.72
L17	107,410.72	107,410.72	107,410.72
L18	107,410.72	107,410.72	107,410.72
L19	107,410.72	107,410.72	107,410.72
L20	107,410.72	107,410.72	107,410.72
L21	107,410.72	107,410.72	107,410.72
L22	107,410.72	107,410.72	107,410.72
L23	107,410.72	107,410.72	107,410.72
L24	107,410.72	107,410.72	107,410.72
L25	107,410.72	107,410.72	107,410.72
L26	107,410.72	107,410.72	107,410.72
L27	107,410.72	107,410.72	107,410.72

Lot	Area (sq. ft.)	Area (sq. ft.)	Area (sq. ft.)
L1	107,410.72	107,410.72	107,410.72
L2	107,410.72	107,410.72	107,410.72
L3	107,410.72	107,410.72	107,410.72
L4	107,410.72	107,410.72	107,410.72
L5	107,410.72	107,410.72	107,410.72
L6	107,410.72	107,410.72	107,410.72
L7	107,410.72	107,410.72	107,410.72
L8	107,410.72	107,410.72	107,410.72
L9	107,410.72	107,410.72	107,410.72
L10	107,410.72	107,410.72	107,410.72
L11	107,410.72	107,410.72	107,410.72
L12	107,410.72	107,410.72	107,410.72
L13	107,410.72	107,410.72	107,410.72
L14	107,410.72	107,410.72	107,410.72
L15	107,410.72	107,410.72	107,410.72
L16	107,410.72	107,410.72	107,410.72
L17	107,410.72	107,410.72	107,410.72
L18	107,410.72	107,410.72	107,410.72
L19	107,410.72	107,410.72	107,410.72
L20	107,410.72	107,410.72	107,410.72
L21	107,410.72	107,410.72	107,410.72
L22	107,410.72	107,410.72	107,410.72
L23	107,410.72	107,410.72	107,410.72
L24	107,410.72	107,410.72	107,410.72
L25	107,410.72	107,410.72	107,410.72
L26	107,410.72	107,410.72	107,410.72
L27	107,410.72	107,410.72	107,410.72



NOTE: ALL DIMENSIONS ARE TO CENTER OF LINE UNLESS OTHERWISE NOTED.



NOTE: BHP MAINTENANCE AND ACCESS CASEMENTS ARE HEREBY DEDICATED TO JAMES CITY COUNTY.

STATE OF VIRGINIA
JAMES CITY COUNTY

Lot	Area (sq. ft.)	Area (sq. ft.)	Area (sq. ft.)
L1	107,410.72	107,410.72	107,410.72
L2	107,410.72	107,410.72	107,410.72
L3	107,410.72	107,410.72	107,410.72
L4	107,410.72	107,410.72	107,410.72
L5	107,410.72	107,410.72	107,410.72
L6	107,410.72	107,410.72	107,410.72
L7	107,410.72	107,410.72	107,410.72
L8	107,410.72	107,410.72	107,410.72
L9	107,410.72	107,410.72	107,410.72
L10	107,410.72	107,410.72	107,410.72
L11	107,410.72	107,410.72	107,410.72
L12	107,410.72	107,410.72	107,410.72
L13	107,410.72	107,410.72	107,410.72
L14	107,410.72	107,410.72	107,410.72
L15	107,410.72	107,410.72	107,410.72
L16	107,410.72	107,410.72	107,410.72
L17	107,410.72	107,410.72	107,410.72
L18	107,410.72	107,410.72	107,410.72
L19	107,410.72	107,410.72	107,410.72
L20	107,410.72	107,410.72	107,410.72
L21	107,410.72	107,410.72	107,410.72
L22	107,410.72	107,410.72	107,410.72
L23	107,410.72	107,410.72	107,410.72
L24	107,410.72	107,410.72	107,410.72
L25	107,410.72	107,410.72	107,410.72
L26	107,410.72	107,410.72	107,410.72
L27	107,410.72	107,410.72	107,410.72



AKRS
CONSULTING ENGINEERS
10000 Old Dominion Blvd., Suite 100
Richmond, VA 23234
Tel: 804-771-1111
Fax: 804-771-1112
www.akrs.com

STATE OF VIRGINIA
JAMES CITY COUNTY
PLAT OF BHP MAINTENANCE AND ACCESS EASEMENT
PARCELS 1-A, 1-B, AND 138
THANKINS INDUSTRIAL PARK
JAMES CITY COUNTY, VIRGINIA