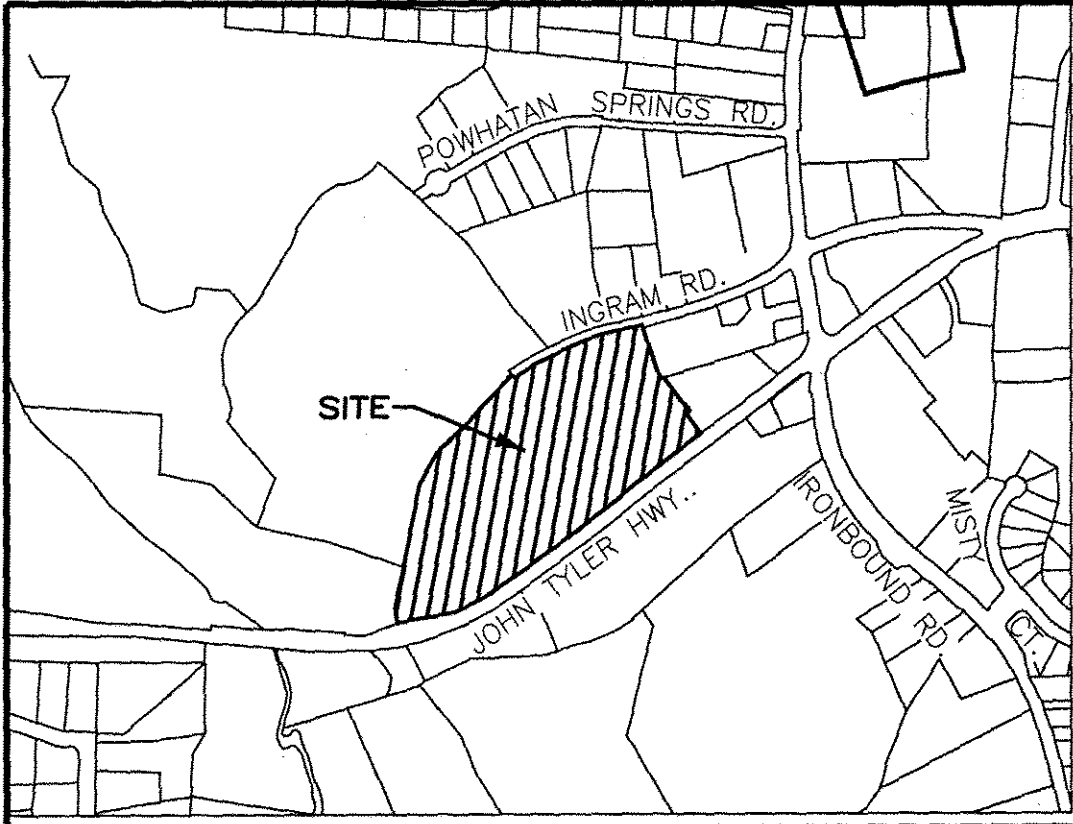
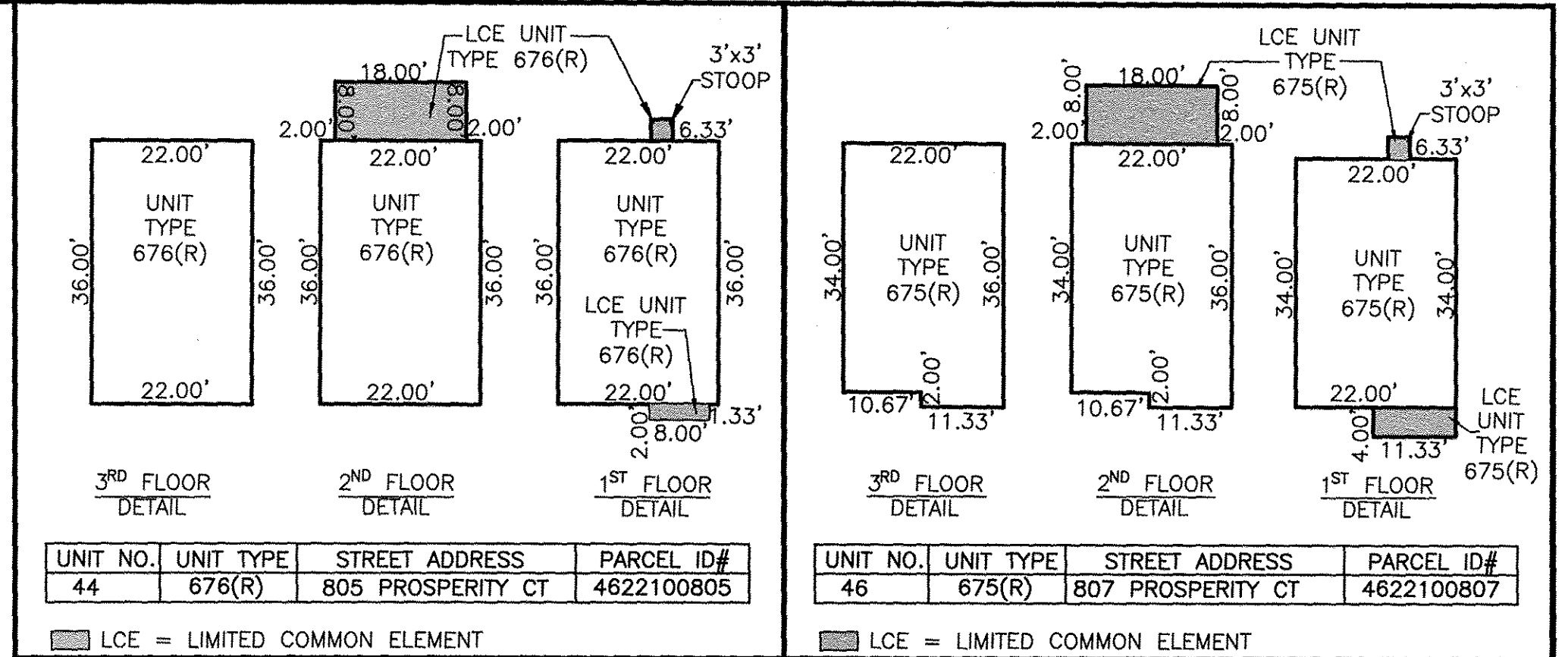


180011444



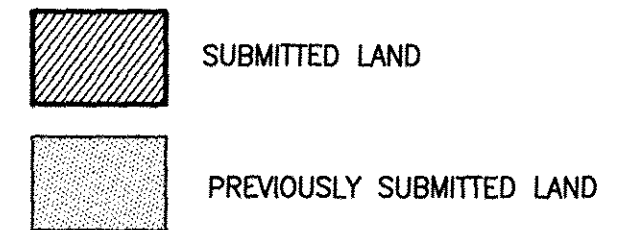
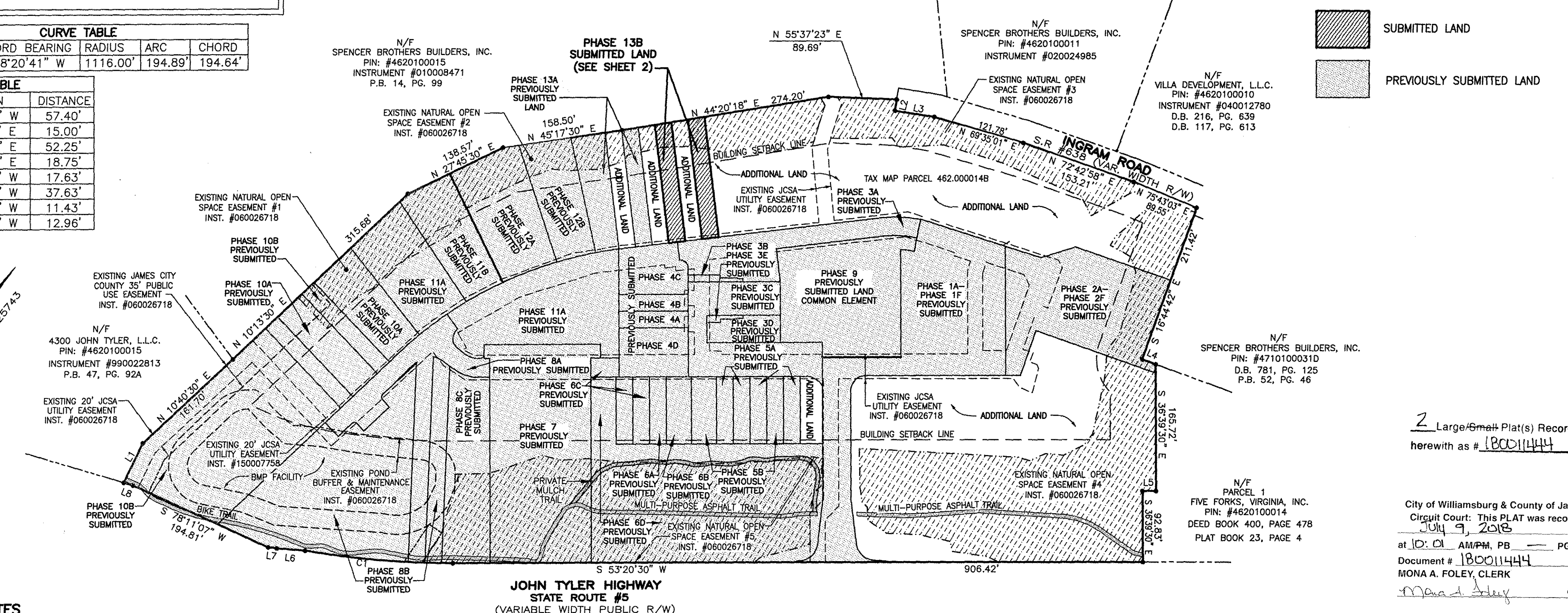
VICINITY MAP - NOT TO SCALE

PARCEL	SQ. FT.	ACRES
PHASE 13B SUBMITTED LAND	6,897	0.158
PREVIOUSLY SUBMITTED LAND	445,267	10.221
ADDITIONAL LAND	201,072	4.617
TOTAL	653,236	14.996



NO.	DELTA	CHORD BEARING	RADIUS	ARC	CHORD
C1	10°00'21"	S 58°20'41" W	1116.00'	194.89'	194.64'

NO.	DIRECTION	DISTANCE
L1	N 10°44'30" W	57.40'
L2	S 27°48'08" E	15.00'
L3	N 62°11'52" E	52.25'
L4	N 73°15'18" E	18.75'
L5	S 53°20'30" W	17.63'
L6	S 58°14'37" W	37.63'
L7	S 60°24'36" W	11.43'
L8	S 70°12'23" W	12.96'



2 Large/Small Plat(s) Recorded herewith as # 180011444

City of Williamsburg & County of James City Circuit Court: This PLAT was recorded on July 9, 2018 at 10:01 AM/PM, PB PG Document # 180011444 MONA A. FOLEY, CLERK

GENERAL NOTES

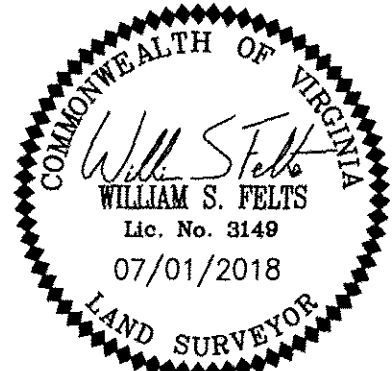
- THIS PLAT WAS PRODUCED WITHOUT A TITLE REPORT AND MAY NOT REFLECT ALL MATTERS AFFECTING PROPERTY.
- THIS PROPERTY APPEARS TO FALL IN ZONE "X" AS SHOWN ON FLOOD INSURANCE RATE MAP 51095C0119D, DATED DECEMBER 16, 2015.
- ALL UNITS TO BE SERVED BY PUBLIC WATER AND SEWER.
- ALL LAND AND IMPROVEMENTS OUTSIDE OF BUILDINGS AND WITHIN PHASE LIMITS SHALL BE KNOWN AS COMMON ELEMENT EXCEPT FOR LIMITED COMMON ELEMENTS DESIGNATED ON PLAT AND BUILDING PLANS.
- THIS PARCEL OF LAND WAS CONVEYED TO GOVERNOR'S GROVE AT FIVE FORKS, L.L.C. BY DEED RECORDED IN INSTRUMENT #070006512.
- THE STREETS WITHIN THIS CONDOMINIUM SHALL BE KNOWN AS COMMON ELEMENT AND NOT A PUBLIC DEDICATED RIGHT-OF-WAY.
- PHASE 13B IS SUBMITTED LAND. THE REMAINING PROPERTY HAS BEEN PREVIOUSLY SUBMITTED OR IS ADDITIONAL LAND. ALL ADDITIONAL LAND AND ALL COMMON ELEMENTS ARE WITHDRAWABLE LAND.
- PROFFERED COVENANTS, RESTRICTIONS, AND CONDITIONS AFFECTING THIS PROPERTY HAVE BEEN RECORDED AS INST. #050019045.
- THE LOCATION OF THE PRIVATE MULCH TRAIL AND THE ASPHALT MULTI-PURPOSE TRAIL ARE APPROXIMATE ONLY AND SUBJECT TO CHANGE.

SURVEYORS CERTIFICATE

I HEREBY CERTIFY THAT THE PLAN PREVIOUSLY RECORDED FOR GOVERNOR'S GROVE AT FIVE FORKS, A CONDOMINIUM AT INSTRUMENT NO. 160001088 ACCURATELY DEPICTS THE UNIT AND RELATED IMPROVEMENTS SHOWN AND THAT THEY COMPLY WITH THE CODE OF VIRGINIA OF 1950, AS AMENDED §55-79.58(B) AND ARE SUBSTANTIALLY COMPLETE.

I HEREBY CERTIFY THAT THIS PLAT IS ACCURATE AND THAT IT COMPLIES WITH THE CODE OF VIRGINIA OF 1950, AS AMENDED, §55-79.58, AND I FURTHER CERTIFY THAT ALL IMPROVEMENTS OR PORTIONS THEREOF DEPICTED HEREON, PURSUANT TO THE CODE OF VIRGINIA, §55-79.58(A), ARE SUBSTANTIALLY COMPLETE.

William S. Felts
 WILLIAM S. FELTS LIC. #3149 07/01/2018 DATE



JCC Subdivision Agent Approval Not Required

PLAT OF PHASE 13B GOVERNOR'S GROVE AT FIVE FORKS A CONDOMINIUM

LOCATED IN THE BERKELEY DISTRICT JAMES CITY COUNTY, VIRGINIA
 DATE: 07/01/2018 SCALE: 1" = 100' JOB# 06-460 SHEET: 1 OF 2



3925 Midlands Road, Williamsburg, VA 23188
 Phone: (757) 565-1677 Fax: (757) 565-0782
 web: landtechresources.com

180011444

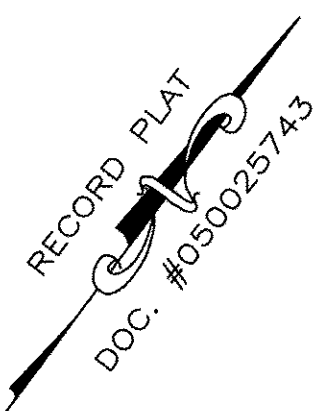
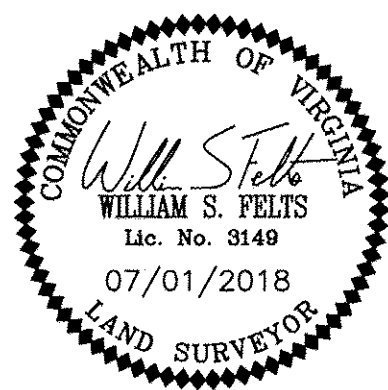
SURVEYORS CERTIFICATE

I HEREBY CERTIFY THAT THE PLAN PREVIOUSLY RECORDED FOR GOVERNOR'S GROVE AT FIVE FORKS, A CONDOMINIUM AT INSTRUMENT NO. 160009184 ACCURATELY DEPICTS THE UNIT AND RELATED IMPROVEMENTS SHOWN AND THAT THEY COMPLY WITH THE CODE OF VIRGINIA OF 1950, AS AMENDED §55-79.58(B) AND ARE SUBSTANTIALLY COMPLETE.

I HEREBY CERTIFY THAT THIS PLAT IS ACCURATE AND THAT IT COMPLIES WITH THE CODE OF VIRGINIA OF 1950, AS AMENDED, §55-79.58, AND I FURTHER CERTIFY THAT ALL IMPROVEMENTS OR PORTIONS THEREOF DEPICTED HEREON, PURSUANT TO THE CODE OF VIRGINIA, §55-79.58(A), ARE SUBSTANTIALLY COMPLETE.

William S. Felts
WILLIAM S. FELTS LIC. #3149

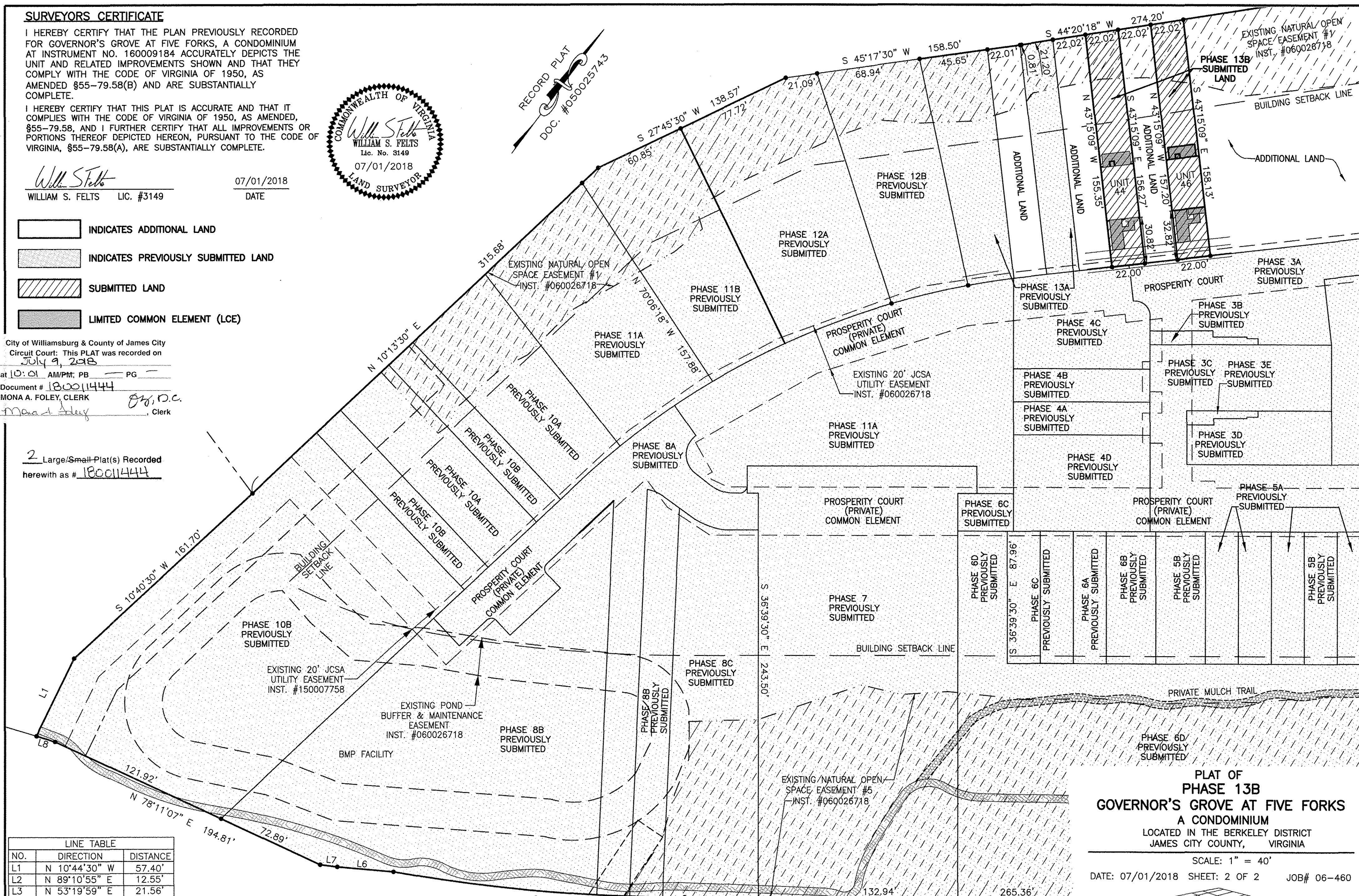
07/01/2018
DATE



- INDICATES ADDITIONAL LAND
- INDICATES PREVIOUSLY SUBMITTED LAND
- SUBMITTED LAND
- LIMITED COMMON ELEMENT (LCE)

City of Williamsburg & County of James City
Circuit Court: This PLAT was recorded on
July 9, 2018
at 10:01 AM/PM, PB PG
Document # 180011444
MONA A. FOLEY, CLERK
Mona A. Foley, Clerk

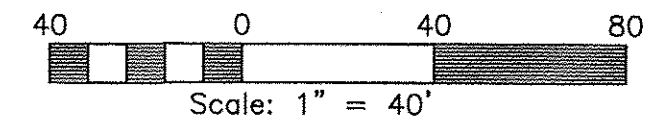
2 Large/Small Plat(s) Recorded
herewith as # 180011444



LINE TABLE		
NO.	DIRECTION	DISTANCE
L1	N 10°44'30" W	57.40'
L2	N 89°10'55" E	12.55'
L3	N 53°19'59" E	21.56'
L6	S 58°14'37" W	37.63'
L7	S 60°24'36" W	11.43'
L8	S 70°12'23" W	12.96'

CURVE TABLE					
NO.	DELTA	CHORD BEARING	RADIUS	ARC	CHORD
C1	10°00'21"	S 58°20'41" W	1116.00'	194.89'	194.64'

JOHN TYLER HIGHWAY
STATE ROUTE #5
(VARIABLE WIDTH PUBLIC R/W)



PLAT OF
PHASE 13B
GOVERNOR'S GROVE AT FIVE FORKS
A CONDOMINIUM
LOCATED IN THE BERKELEY DISTRICT
JAMES CITY COUNTY, VIRGINIA

SCALE: 1" = 40'
DATE: 07/01/2018 SHEET: 2 OF 2 JOB# 06-460

LandTech Resources, Inc.
Engineering & Surveying Consultants

3925 Midlands Road, Williamsburg, VA 23188
Phone: (757) 565-1677 Fax: (757) 565-0782
web: landtechresources.com

JCC Subdivision Agent *ELC*
Approval Not Required