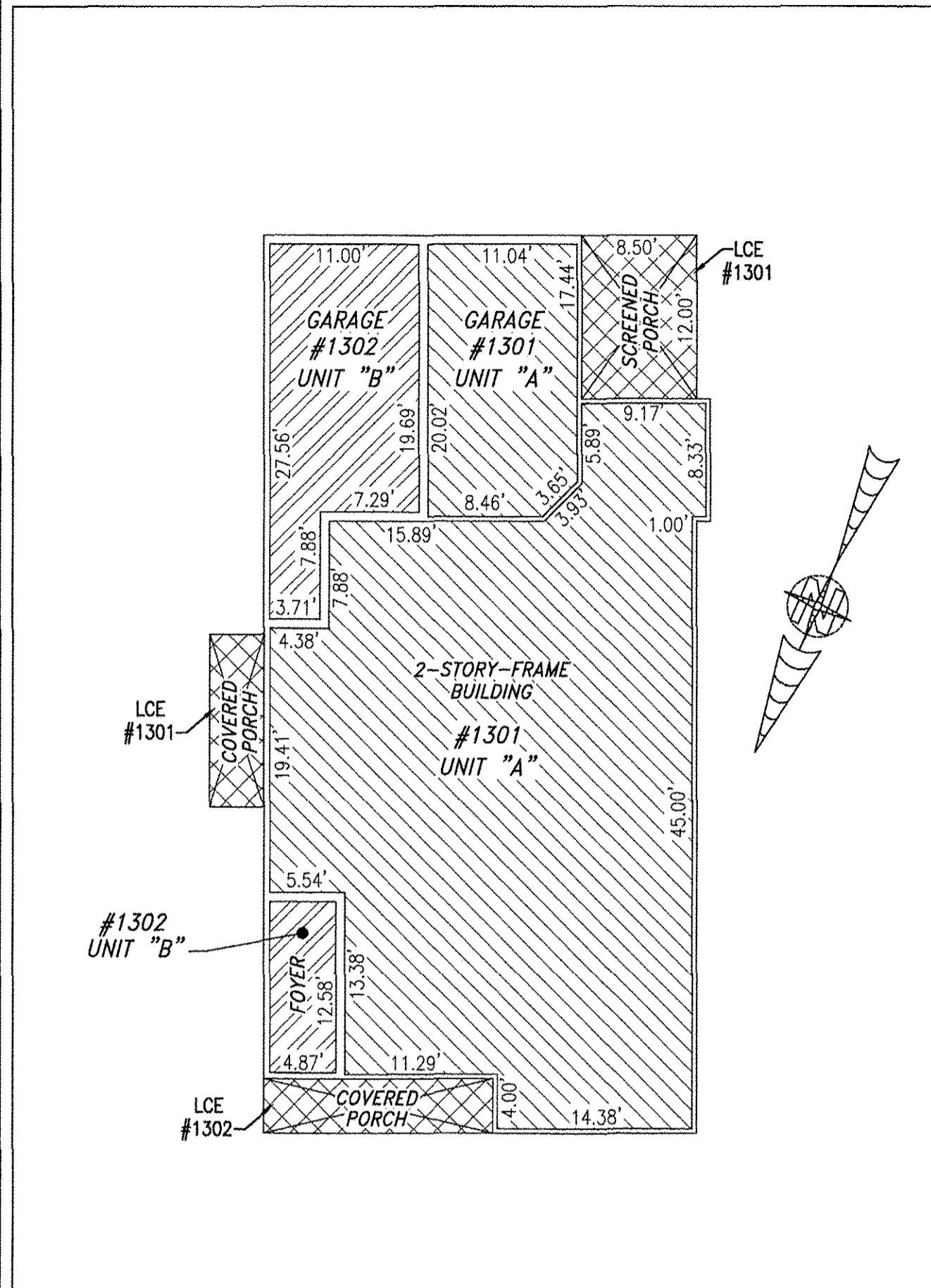
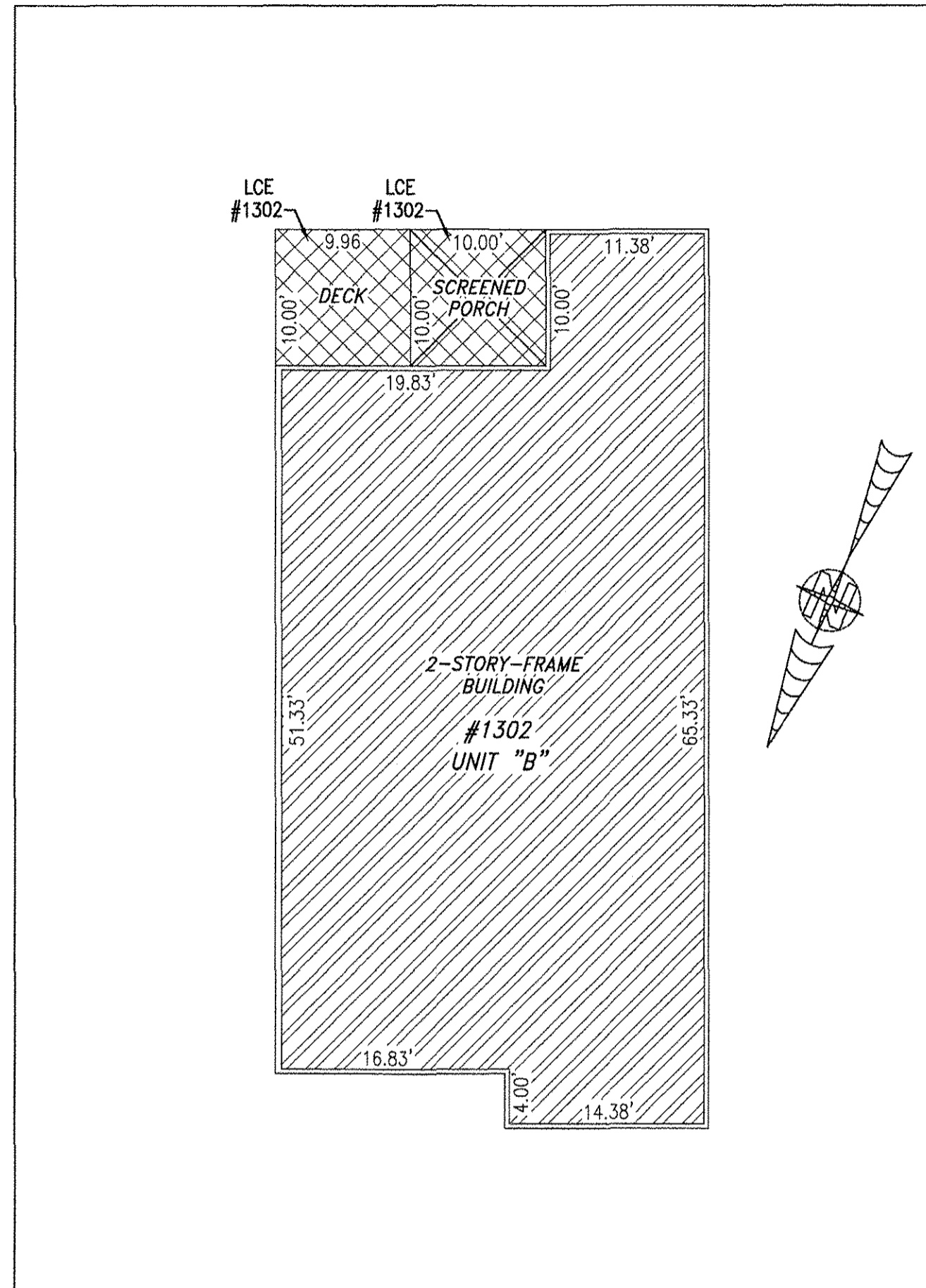


180010007

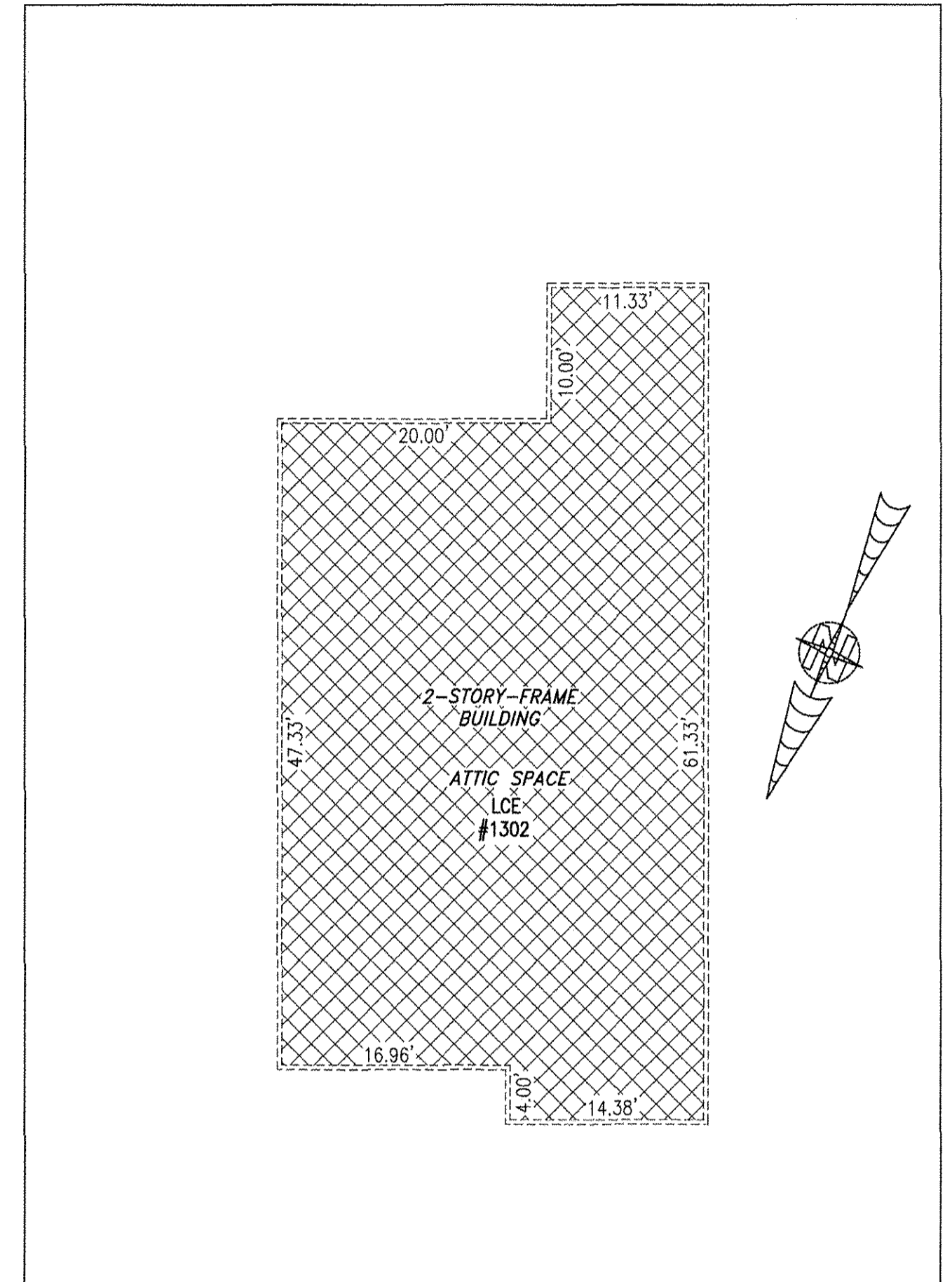
**BUILDING 13 (DUPLEX)**



**FIRST FLOOR**



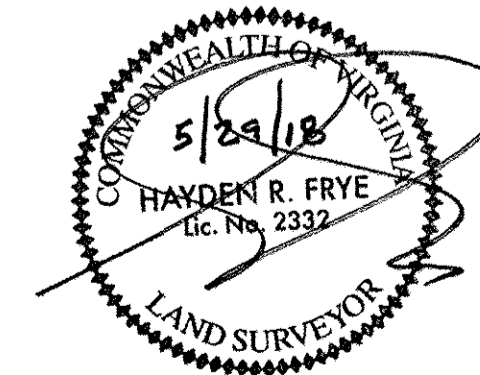
**SECOND FLOOR**



**THIRD FLOOR**

I HEREBY CERTIFY THAT THIS PLAN IS ACCURATE AND THAT IT COMPLIES WITH THE PROVISIONS OF THE CODE OF VIRGINIA OF 1950 AS AMENDED, § 55-79.58 AND I FURTHER CERTIFY THAT ALL UNITS THEREOF DEPICTED HEREON, PURSUANT TO THE CODE OF VIRGINIA § 55-79.58B, ARE SUBSTANTIALLY COMPLETE.

5 Large/Small Plat(s) Recorded  
herewith as # 180010007



City of Williamsburg & County of James City  
Circuit Court: This PLAT was recorded on  
June 13, 2018  
at 11:52 AM/PM - PB \_\_\_\_\_ PG \_\_\_\_\_  
Document # 180010007  
MONA A. FOLEY, CLERK  
Mona A. Foley, Clerk

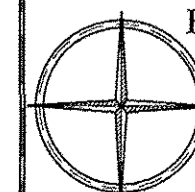


UNIT ID	UNIT DESCRIPTION	UNIT ADDRESS
A	-INDICATES AREA OF UNIT 1301	#1301 FARRINGDON WAY
B	-INDICATES AREA OF UNIT 1302	#1302 FARRINGDON WAY
	-INDICATES COMMON ELEMENT	
	-INDICATES LIMITED COMMON ELEMENT	

THIS SHEET: FLOOR PLANS

**PHASE 13**  
**CONDOMINIUM PLAT AND PLAN**  
OF  
**THE PROMENADE**  
AT  
**JOHN TYLER**  
A CONDOMINIUM  
JAMES CITY COUNTY, VIRGINIA

Jo# 160921



Hayden Frye and Associates, Inc.  
**Land Surveyors**

333 KELLAM ROAD, SUITE 200  
VIRGINIA BEACH, VA., 23462  
PH: (757) 491-7228 FX: (757) 491-7229

DATE: MAY 24, 2018

SCALE: 1"=10'

SHEET 5 OF 5 THIS PHASE

JCC Subdivision Agent *efc*  
Approval Not Required