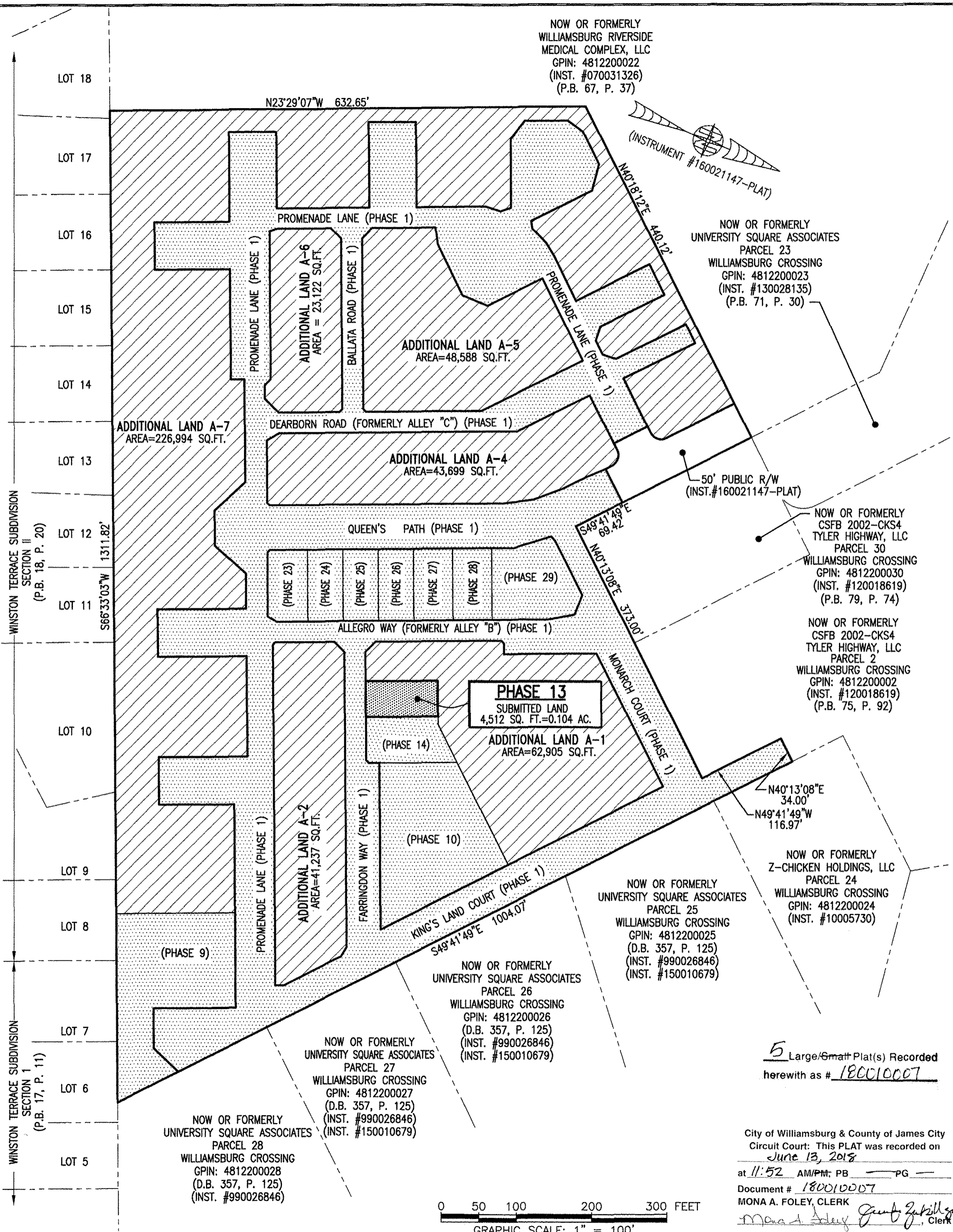
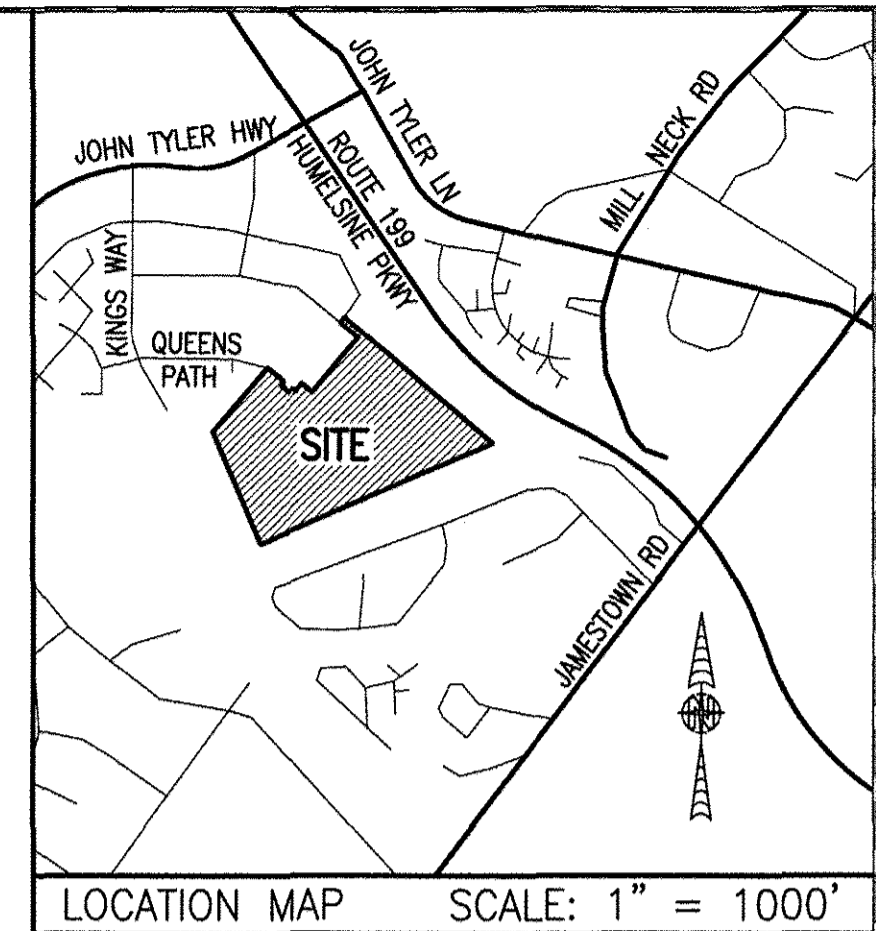


180010007

I HEREBY CERTIFY THAT THIS PLAT IS ACCURATE AND THAT IT COMPLIES WITH THE PROVISIONS OF THE CODE OF VIRGINIA OF 1950 AS AMENDED, § 55-79.58 AND I FURTHER CERTIFY THAT ALL IMPROVEMENTS THEREOF DEPICTED HEREON, PURSUANT TO THE CODE OF VIRGINIA § 55-79.58A, ARE SUBSTANTIALLY COMPLETE.



NOW OR FORMERLY WILLIAMSBURG RIVERSIDE MEDICAL COMPLEX, LLC
 GPIN: 4812200022
 (INST. #070031326)
 (P.B. 67, P. 37)

NOW OR FORMERLY UNIVERSITY SQUARE ASSOCIATES PARCEL 23
 WILLIAMSBURG CROSSING
 GPIN: 4812200023
 (INST. #130028135)
 (P.B. 71, P. 30)

NOW OR FORMERLY CSFB 2002-CKS4 TYLER HIGHWAY, LLC PARCEL 30
 WILLIAMSBURG CROSSING
 GPIN: 4812200030
 (INST. #120018619)
 (P.B. 79, P. 74)

NOW OR FORMERLY CSFB 2002-CKS4 TYLER HIGHWAY, LLC PARCEL 2
 WILLIAMSBURG CROSSING
 GPIN: 4812200002
 (INST. #120018619)
 (P.B. 75, P. 92)

NOW OR FORMERLY Z-CHICKEN HOLDINGS, LLC PARCEL 24
 WILLIAMSBURG CROSSING
 GPIN: 4812200024
 (INST. #10005730)

NOW OR FORMERLY UNIVERSITY SQUARE ASSOCIATES PARCEL 25
 WILLIAMSBURG CROSSING
 GPIN: 4812200025
 (D.B. 357, P. 125)
 (INST. #990026846)
 (INST. #150010679)

NOW OR FORMERLY UNIVERSITY SQUARE ASSOCIATES PARCEL 26
 WILLIAMSBURG CROSSING
 GPIN: 4812200026
 (D.B. 357, P. 125)
 (INST. #990026846)
 (INST. #150010679)

NOW OR FORMERLY UNIVERSITY SQUARE ASSOCIATES PARCEL 27
 WILLIAMSBURG CROSSING
 GPIN: 4812200027
 (D.B. 357, P. 125)
 (INST. #990026846)
 (INST. #150010679)

NOW OR FORMERLY UNIVERSITY SQUARE ASSOCIATES PARCEL 28
 WILLIAMSBURG CROSSING
 GPIN: 4812200028
 (D.B. 357, P. 125)
 (INST. #990026846)

AREA TABLE				
PHASE	BLDG#	STATUS/RECORDATION	SQUARE FEET	ACRES
1	N/A	INSTR.#170011679	268,468	6.163
9	9	INSTR.#180003694	25,978	0.596
10	10	INSTR.#170023466	25,806	0.592
13	13	SUBSTANTIALLY COMPLETE	4,512	0.104
14	14	NOT YET RECORDED	6,462	0.148
23	23	INSTR.#180001768	5,014	0.115
24	24	INSTR.#180005480	4,464	0.102
25	25	INSTR.#180001779	4,466	0.103
26	26	INSTR.#170021156	4,465	0.102
27	27	INSTR.#170021157	4,944	0.114
28	28	INSTR.#180001781	4,936	0.113
29	29	NOT YET RECORDED	10,569	0.243
REMAINS OF ADDITIONAL LAND A-1			62,905	1.444
ADDITIONAL LAND A-2			41,237	0.947
ADDITIONAL LAND A-4			43,699	1.003
ADDITIONAL LAND A-5			48,588	1.115
ADDITIONAL LAND A-6			23,122	0.531
ADDITIONAL LAND A-7			226,994	5.211
TOTAL: NEW PARCEL 29			816,629	18.747

LEGAL DESCRIPTION

PROPERTY SHOWN HEREON BEING "NEW PARCEL 29" CONTAINING 18.747 ACRES AS SHOWN ON "PLAT OF LOT LINE EXTINGUISHMENT BEING PARCELS 20 AND 29 OF WILLIAMSBURG CROSSING" PREPARED BY AES CONSULTING ENGINEERS, DATED 10-24-16 AND RECORDED AS INSTRUMENT NO. 160021147.

NOTES:

- PHASE 13 BUILDING 13 IS SUBSTANTIALLY COMPLETE.
- EASEMENTS AND BUILDING LINES SHOWN HEREON PER THE FOLLOWING:
 - ALTA SURVEY BY AES CONSULTING ENGINEERS, DATED 3-23-15
 - PLAT BY AES CONSULTING ENGINEERS, DATED 10-24-16, INST.#160021147
 - PLAN OF DEVELOPMENT BY AES CONSULTING ENGINEERS, DATED 9-8-16

SHEET INDEX:

- SHEET 1 OF 5: OVERALL SITE LAYOUT AND AREAS
- SHEET 2 OF 5: PROPERTY DATA, EASEMENTS, CURVE AND LINE TABLE
- SHEET 3 OF 5: BUILDING DETAIL
- SHEET 4 OF 5: FOUNDATION PLAN AND SECTION
- SHEET 5 OF 5: FLOOR PLANS

THIS SHEET: OVERALL SITE LAYOUT AND AREAS

PHASE 13
CONDOMINIUM PLAT AND PLAN
 OF
THE PROMENADE
 AT
JOHN TYLER
 A CONDOMINIUM
 JAMES CITY COUNTY, VIRGINIA

Jo# 160921
 Hayden Frye and Associates, Inc.
Land Surveyors
 333 KELLAM ROAD, SUITE 200
 VIRGINIA BEACH, VA., 23462
 PH: (757) 491-7228 FX:(757) 491-7229

DATE: MAY 24, 2018
 SCALE: 1"=100'
 SHEET 1 OF 5 THIS PHASE

5 Large/Small Plat(s) Recorded herewith as # 180010007

City of Williamsburg & County of James City
 Circuit Court: This PLAT was recorded on
 June 13, 2018
 at 11:52 AM/PM; PB PG
 Document # 180010007
 MONA A. FOLEY, CLERK

JCC Subdivision Agent EGC
 Approval Not Required

- INDICATES SUBMITTED LAND
- INDICATES PREVIOUSLY SUBMITTED LAND
- INDICATES ADDITIONAL LAND

