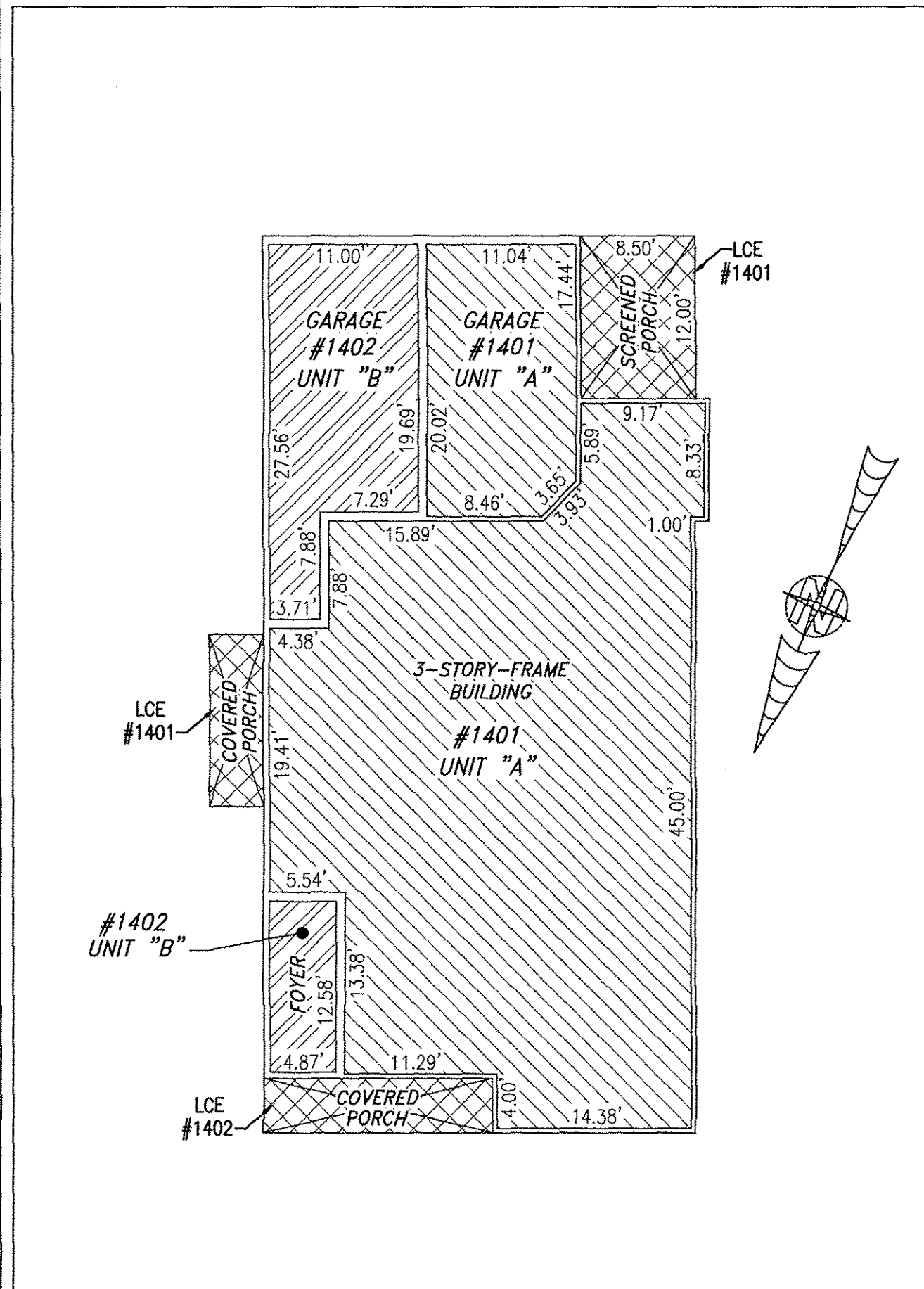
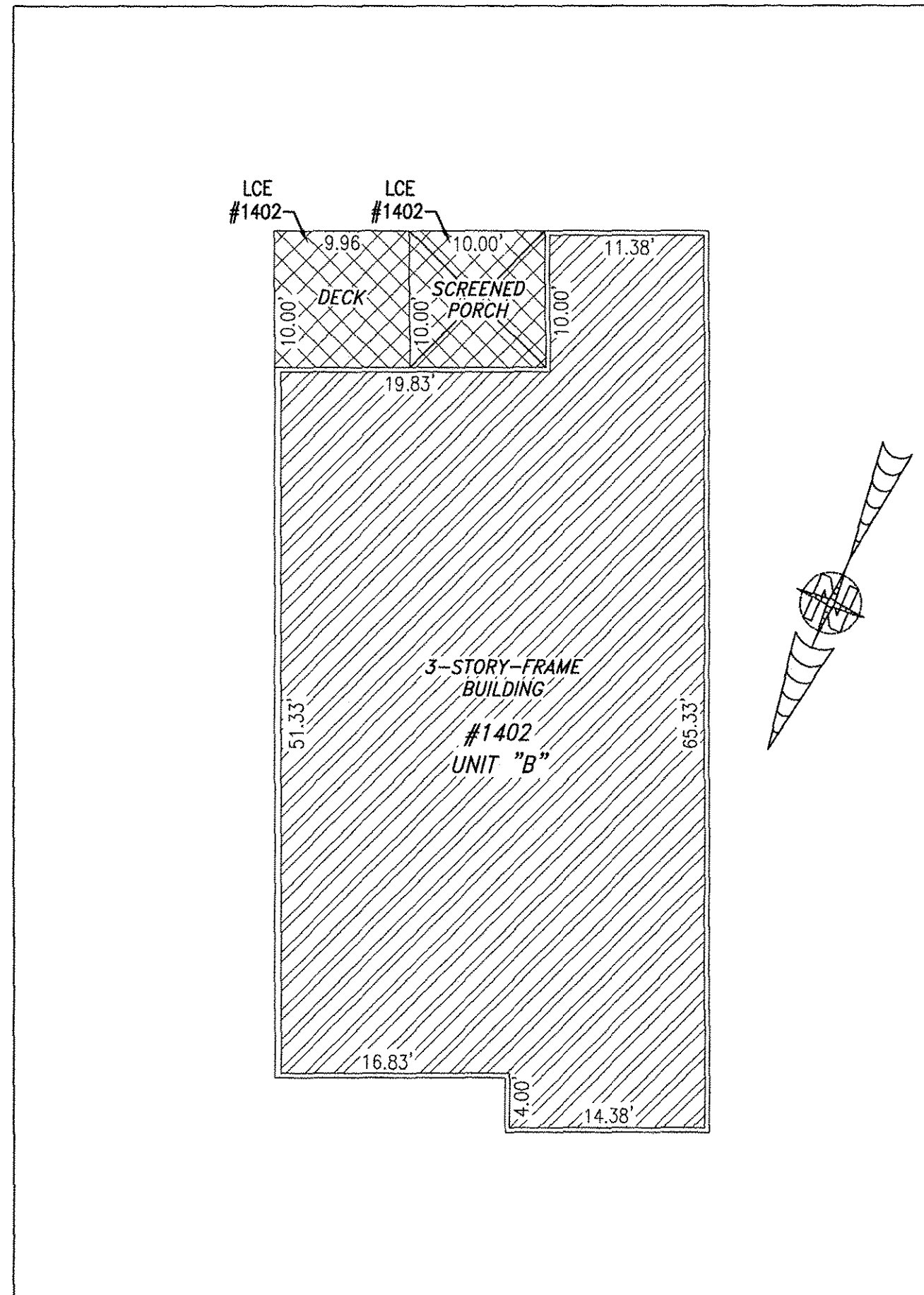


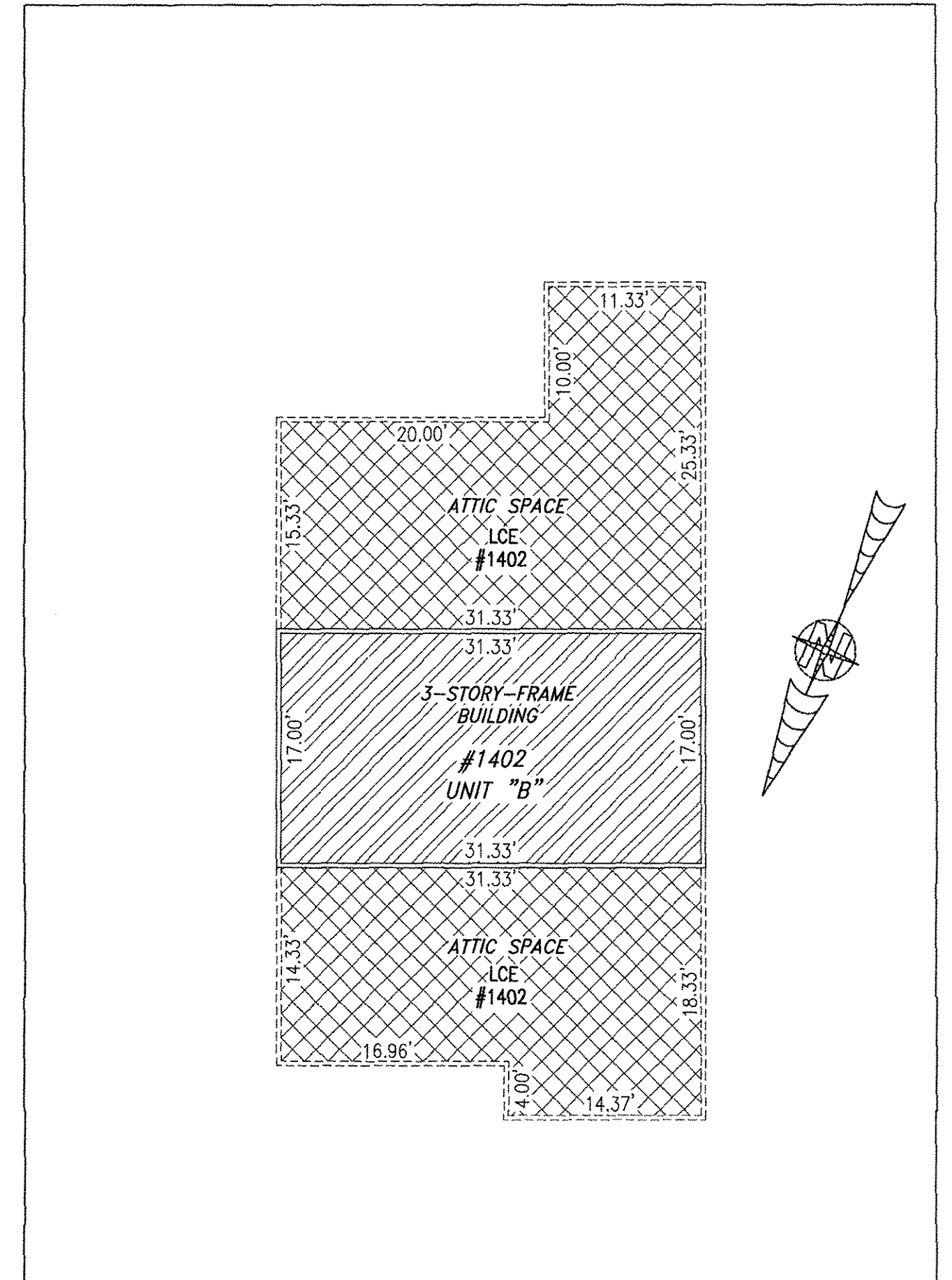
BUILDING 14 (DUPLEX)



FIRST FLOOR



SECOND FLOOR



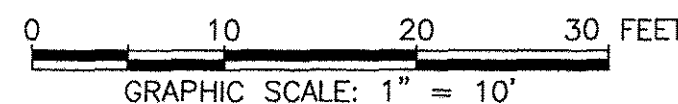
THIRD FLOOR

I HEREBY CERTIFY THAT THIS PLAN IS ACCURATE AND THAT IT COMPLIES WITH THE PROVISIONS OF THE CODE OF VIRGINIA OF 1950 AS AMENDED, § 55-79.58 AND I FURTHER CERTIFY THAT ALL UNITS THEREOF DEPICTED HEREON, PURSUANT TO THE CODE OF VIRGINIA § 55-79.58B, ARE SUBSTANTIALLY COMPLETE.

UNIT ID	UNIT DESCRIPTION	UNIT ADDRESS
A	-INDICATES AREA OF UNIT 1401	#1401 FARRINGTON WAY
B	-INDICATES AREA OF UNIT 1402	#1402 FARRINGTON WAY
	-INDICATES COMMON ELEMENT	
	-INDICATES LIMITED COMMON ELEMENT	

5 Large/Small Plat(s) Recorded
herewith as # 180009579

City of Williamsburg & County of James City
Circuit Court: This PLAT was recorded on
6-6-2018
at 2:34 AM (PM) PB PG
Document # 180009579
MONA A. FOLEY, CLERK
Mona A. Foley, Clerk

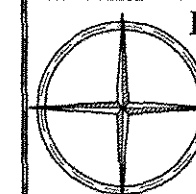


JCC Subdivision Agent
Approval Not Required

THIS SHEET: FLOOR PLANS

PHASE 14
CONDOMINIUM PLAT AND PLAN
OF
THE PROMENADE
AT
JOHN TYLER
A CONDOMINIUM
JAMES CITY COUNTY, VIRGINIA

Jo# 160921



Hayden Frye and Associates, Inc.

Land Surveyors

333 KELLAM ROAD, SUITE 200
VIRGINIA BEACH, VA, 23462
PH: (757) 491-7228 FX: (757) 491-7229

DATE: MAY 21, 2018

SCALE: 1"=10'

SHEET 5 OF 5 THIS PHASE