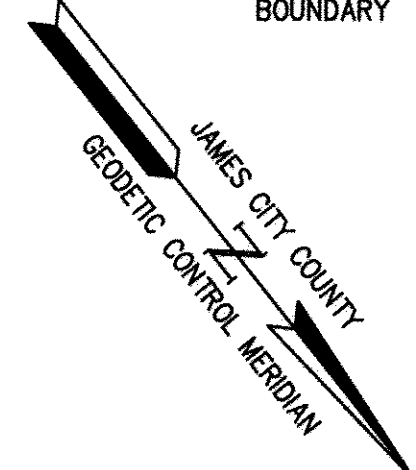
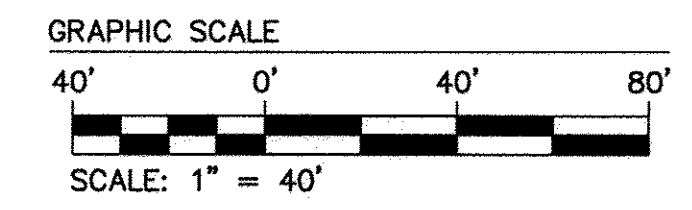
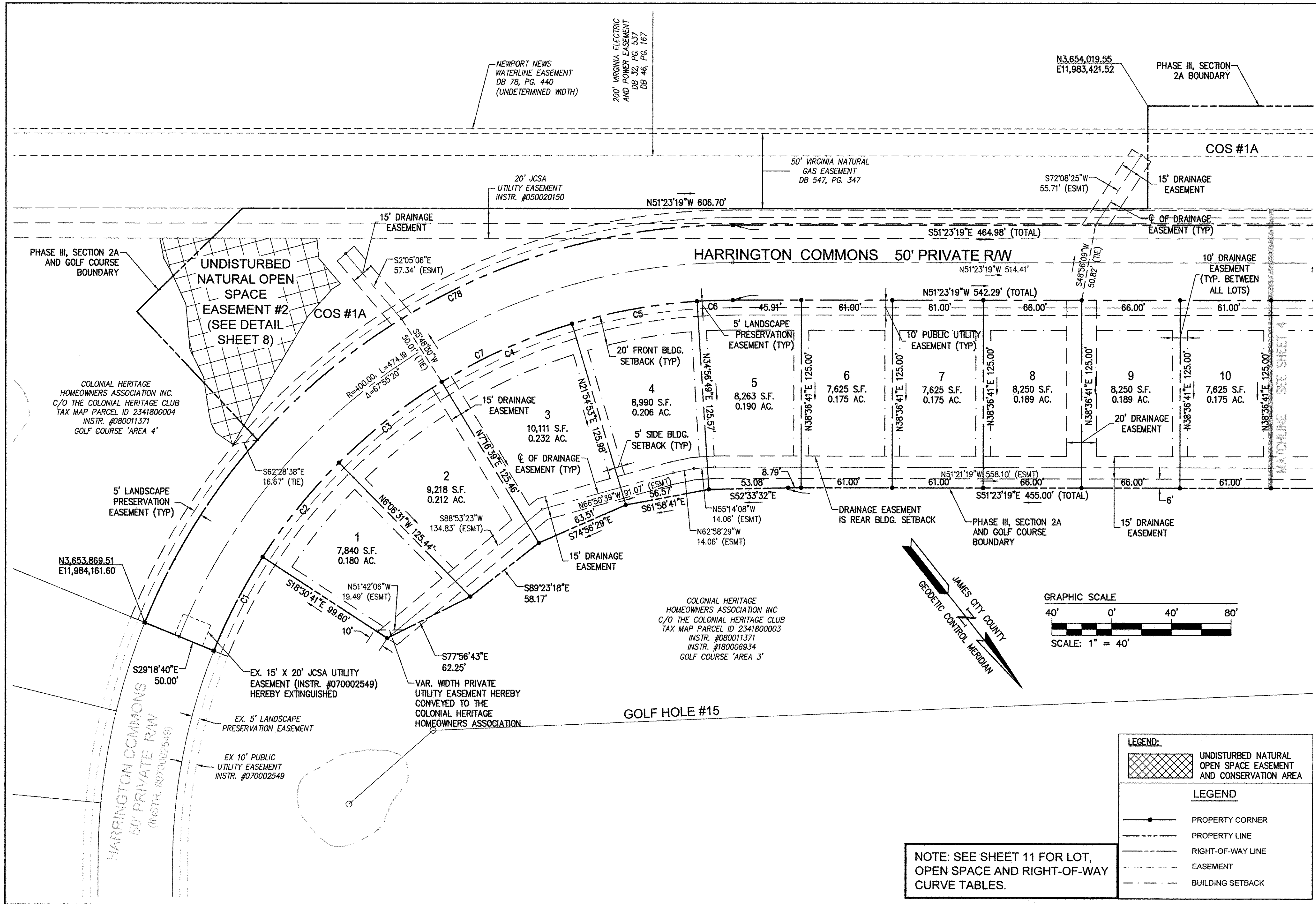


180008340



LEGEND:

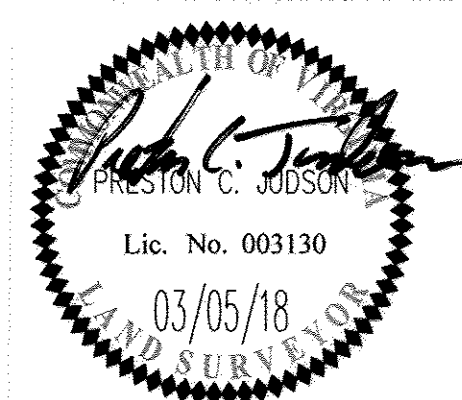
	UNDISTURBED NATURAL OPEN SPACE EASEMENT AND CONSERVATION AREA
	PROPERTY CORNER
	PROPERTY LINE
	RIGHT-OF-WAY LINE
	EASEMENT
	BUILDING SETBACK

NOTE: SEE SHEET 11 FOR LOT, OPEN SPACE AND RIGHT-OF-WAY CURVE TABLES.

S:\JCSA\8881132-D Phase III Section 2A\8881-320 Pl III-2A.dwg, 4/18/2018 8:36:14 AM, rrrr.dwg

City of Williamsburg & County of James City
 Circuit Court: This PLAT was recorded on
May 8 2018
 at 3:04 AM/PM, PG _____
 Document # 180008340
 MONA A. FOLEY, CLERK
Monica Foley Clerk

Large/Small Plat(s) Recorded
 herewith as # 180008340



5248 Olde Towne Road, Suite 1
 Williamsburg, Virginia 23188
 Phone: (757) 253-0040
 Fax: (757) 220-8994
 www.aesva.com

PLAT OF SUBDIVISION
 LOTS 1 THRU 67, COS #1A, #1B, #1C, #1D, #1E, #1F
 AND COS #2
COLONIAL HERITAGE
PHASE III - SECTION 2A
 OWNER / DEVELOPER: COLONIAL HERITAGE, LLC
 STONEHOUSE DISTRICT JAMES CITY COUNTY VIRGINIA

Project Contacts:	PCJ/TRS
Project Number:	8881-32A
Scale:	Date:
1"=40'	10/23/17
Sheet Number	
3 of 11	